

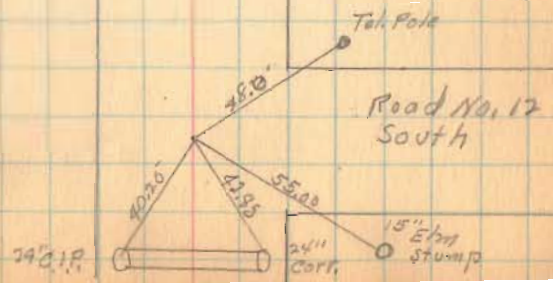
11-14-95 Wilgus  
Haines

Road No-50 from No 12 E

4328

INDEXED ON MAP

See 1919



Road No 50

12-14  
9-10  
100-11

Party -

x - G. W. Lucas

□ - C. K. Lucas

di - H. F. Lucas

31 Mar 47

64

Sec 9936

Iron set  
20° 28' L

Hub 30

57.45  
16.15

sec. 12201

Hub set

Stone band on  
Sec line

sec. 13100

Road No 12  
North

Sec  
9936

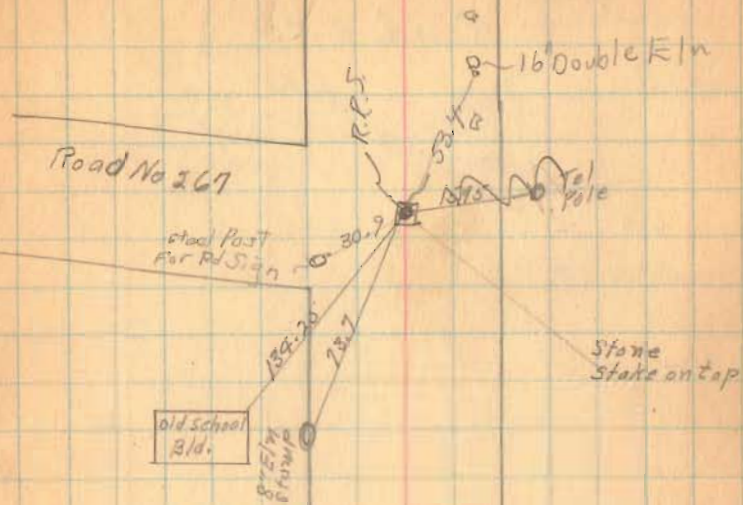
Road No 50

65



Road No 50

66

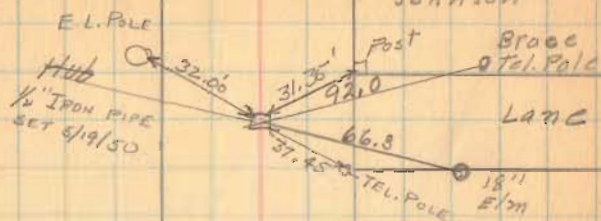


Road # 50

67

SEC 9938

Emmatt  
Johnson

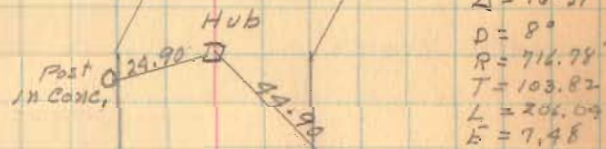


BRACE  
TEL. POLE  
LANC  
Foster Ramsey

SEC 9937

Road No 50

68



staked  
11-16-95  
COC  
W. I. G. H.  
HUBS  
set for  
Mon. on  
R.C. B.P.T.

Road No 50

69

Lewis F  
Predmore

x x x x

Emmett Johnson

stone

x x x x

stone

Road No 50

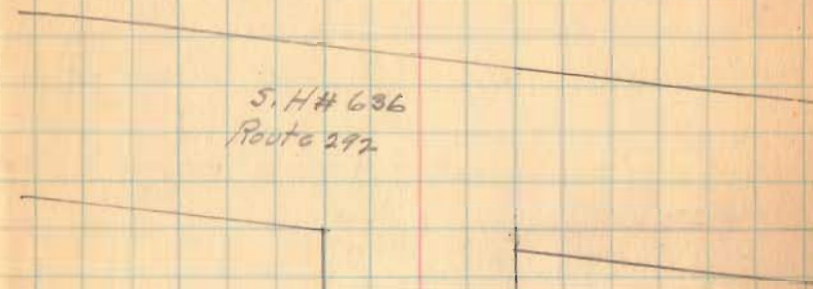
70





Road No 50

71



S. H # 636  
Route 292

C.H. No. 50

Rushcreek & Bokescreek Twp.

R/W Mon Set for 60' Road

R.R. Spikes on E at R/W Mon.

30+00 R/W Mon. Set @ 30' from E

25+00 R/W Mon. Set @ 30' from E

20+00 R/W Mon. Set @ 30' from E

16+89.0 Iron Pin Found -  $\Delta = 0^{\circ}05'$  Rt - R/W Mon. Set

13+00 R/W Mon. Set @ 30' from E

6+00 R/W Mon. Set @ 30' from E

1+00 R/W Mon. Set @ 30' from E

0+00 Iron Pin Found

Aug-1957 - Surrey  
Aug-1964 - Mon. Set

Shirk  
Silverstein  
Tevis  
Heminger

19

Imogene Porter

Boyd Stanfield

\* R/W Sta. 32+65.7

\* R/W Sta. 27+59

4328

INDEXED ON MAP

Sta 26+07

Sta 26+01

N. 83 3/4° E

Geo. J. Ansley

Harry Kramer Jr.

Sta 16+89.0  
Iron Pin Found \* R/W  
 $\Delta = 0^{\circ}05'$  Rt.

John E. Kinney

E. C.H. 50

Car Post

Car Post

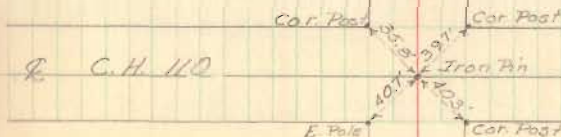
E. C.H. 110

E. C.H. 5

E. Pole

Car Post

C.H. 5



Sta.

65+00 R/W Mon. Set @ 30' from E

60+00 R/W Mon. Set @ 30' from E

55+00 R/W Mon. Set @ 30' from E

53+10.1 Iron Pin Found -  $\Delta = 0^{\circ} 09' 1/2''$  Lt.

50+00 R/W Mon. Set @ 30' from E

48+31.3 Iron Pin Found -  $\Delta = 0^{\circ} 12' 1/2''$  - Section Line45+00 R.R. Spike Set on E but no R/W Mon. Set

40+00 R/W Mon. Set @ 30' from E

35+00 R/W Mon. Set @ 30' from E

19

John S. Watkins

\* R Sta. 64+88 \*



Choice Beck

John E. Kinney

Iron Pin Found  
Sta 53+10.1  
 $\Delta = 0^{\circ} 09' 1/2''$  Lt.

E. CH. 12  
To Walnut Grove

Choice Beck

\* R Sta. 50+26.3 \*

V.M.S. 9936

E. CH. 131

V.M.S. 10041

Iron on Stand  
Sta 48+31.3  
 $\Delta = 0^{\circ} 12' 1/2''$

Cemetery

V.M.S. 13199

V.M.S. 10631

\* R Sta. 47+06 \*

W<sup>o</sup> B. Green

Arrol B. Cost

\* R Sta. 40+45 \*

\* R Sta. 36+30 \*

Imogene Porter

Boyd Stanfield

C.H. 50 cont'd.

Sta.

105+00 R/W Mon Set @ 30' Rt. Only

97+41.80 Ahead

97+39.66 Back P.T. - R/W Mon set @ 30' Lt. Only

96+41.7 P.I. - Iron Pin Found -  $\Delta = 20^\circ - 28'$  Lt.

95+41.60 P.C. - R/W Mon Set @ 30' from  $\mathcal{L}$

90+00 R/W Mon Set @ 30' from  $\mathcal{L}$

85+00 R/W Mon Set @ 30' from  $\mathcal{L}$

81+43.1 Iron Pin Found - No Angle

80+00 R/W Mon. Set @ 30' from  $\mathcal{L}$

75+00 R/W Mon Set @ 30' from  $\mathcal{L}$

70+00 R/W Mon Set @ 30' from  $\mathcal{L}$

20

CURVE DATA

$\Delta = 20^\circ - 28'$

$D = 10^\circ - 20'$

$R = 554.48'$

$T = 100.10'$

$L = 198.06'$

$E = 8.96'$

Wellington T. Mitchell

V.M.S. 12201

Iron Pin Found  
Sta. 96+41.7  
 $\Delta = 20^\circ - 28'$

Survey Cor. Stone

10.5'

\* R 96+41.7

V.M.S. 13200

Odin D. Frey

John S. Watkins

$\mathcal{L}$  C.H. 12

← To Big Springs

E. Pole

Iron Pin Found  
Sta. 81+43.1  
No Angle

John E. Kinney

45 Sta.

150+00 R/W Mon Set @ 30' from L

145+00 R/W Mon Set @ 30' from L

140+00 R/W Mon Set @ 30' from L

135+00 R/W Mon Set @ 30' from L Rt. Only

130+00 R/W Mon Set @ 30' from L

125+00 R/W Mon. Set @ 30' from L

120+00 R/W Mon. Set @ 30' from L

116+07.6 Iron Pin Found -  $\Delta = 0^\circ - 05' \text{ Rt.}$ 

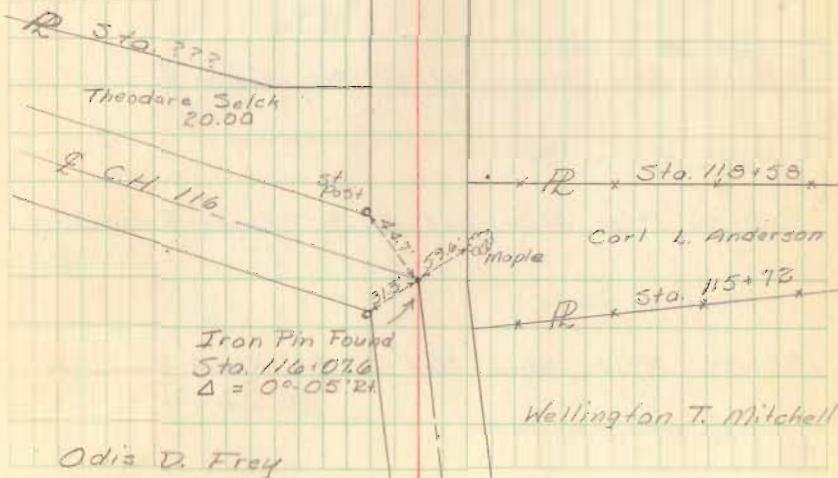
115+00 R/W Mon. Set @ 30' from L

110+00 R/W Mon. set @ 30' from L

Bakescreek  
BushcreekTownship  
Township

Richard T. Deubler

Elton E. Kinney



C.H. 50 cont'd.

Sta.

190+00 R/W Mon. Set @ 30' from E

187+39.2 Iron Pin Found - No Angle

185+00 R/W Mon. Set @ 30' from E Rt. Only

180+00 R/W Mon. Set @ 30' from E

175+00 R/W Mon. Set @ 30' from E

170+00 R/W Mon. Set @ 30' from E

169+75.1 Iron Pin Found - No Angle

165+00 R/W Mon. Set @ 30' from E

160+00 R/W Mon. Set @ 30' from E

155+00 R/W Mon. Set @ 30' from E

22

9938

Emmett H. Johnson

Survey Line

9937

9938

R Sta 187+39.2  
Iron Pin Found  
Sta. 187+39.2  
No Angle

9937

Earl F. Fish

Donald C. Frederick

\* R Sta. 171+90 \*  
C.H. 267

Iron on Stone  
Sta 169+75.1  
No Angle

Old School

Elza G. Bechter

163+042 → 84 39'

162+657 → 82 60'

\* R Sta 162+50 \*

Theodora Jatch

Orville Gibson

\* R Sta 151+72 \*

Richard T. Deubler

\* R Sta 151+72 \*

Elton E. Kinney

C.H. 50 cont'd.

Sta.

223+66.6 Ahead  
223+73.0 Back Correction sta of angle - Iron Pin -  $\Delta = 13^{\circ}29' Rt.$

220+00 R/W Mon. Set @ 30' from E Rt. Only

215+00 R/W Mon. Set @ 30' from E

210+00 R/W Mon. Set @ 30' from E

205+00 R/W Mon. Set @ 30' from E

200+00 R.R. Spike Set on E but no R/W Mon. Set

195+25.0 Iron Pin Found - R/W Mon. Set -  $\Delta = 16^{\circ}29' Rt.$

23

Wm S. Ramsey

Wilbur M. Ramsey

Iron Pin Set  
Sta. 223+66.6  
 $\Delta = 13^{\circ}29' Rt.$

\* R \* Sta. 223+58.6 \* R \* Sta. 223+58.6 \*  
Maple Pear

Hazel Deardorff

Hazel Deardorff

Stone Found  
Sta. 214+61  
No Angle

200' Post \* R \* Sta. 214+61

\* R \* Sta. 209+25.9 \* 94' Iron Pin Found

Colvin E. Deskard

Emmett K. Johnson

\* R \* Sta. 197+24.2 \* 97' Iron Pin Found

Iron Pin Found  
Sta. 195+25.0  
 $\Delta = 16^{\circ}29' Rt.$

Earl E. Fish

23 Sta.

236+37.2 Iron Placed in E S.P. 292

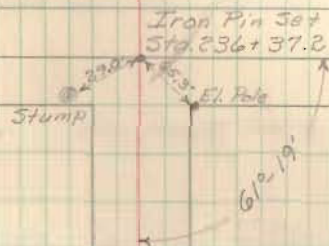
235+00 R/W Mon. Set @ 30' from E

230+00 R/W Mon. Set @ 30' from E

225+00 R/W Mon. Set @ 30' from E

24

E S.P. 292

W<sup>m</sup> S. RamseyW<sup>m</sup> S. Ramsey~~+ TD + Sta 224+87~~

Wilbur M. Ramsey