

Rd 110 from

S.H. 579 (Part 274) to C.H. 40

See FB 516 pg 40-44 for old Survey

Staked 50' by order of

Pushcreek Twp. Trustees.

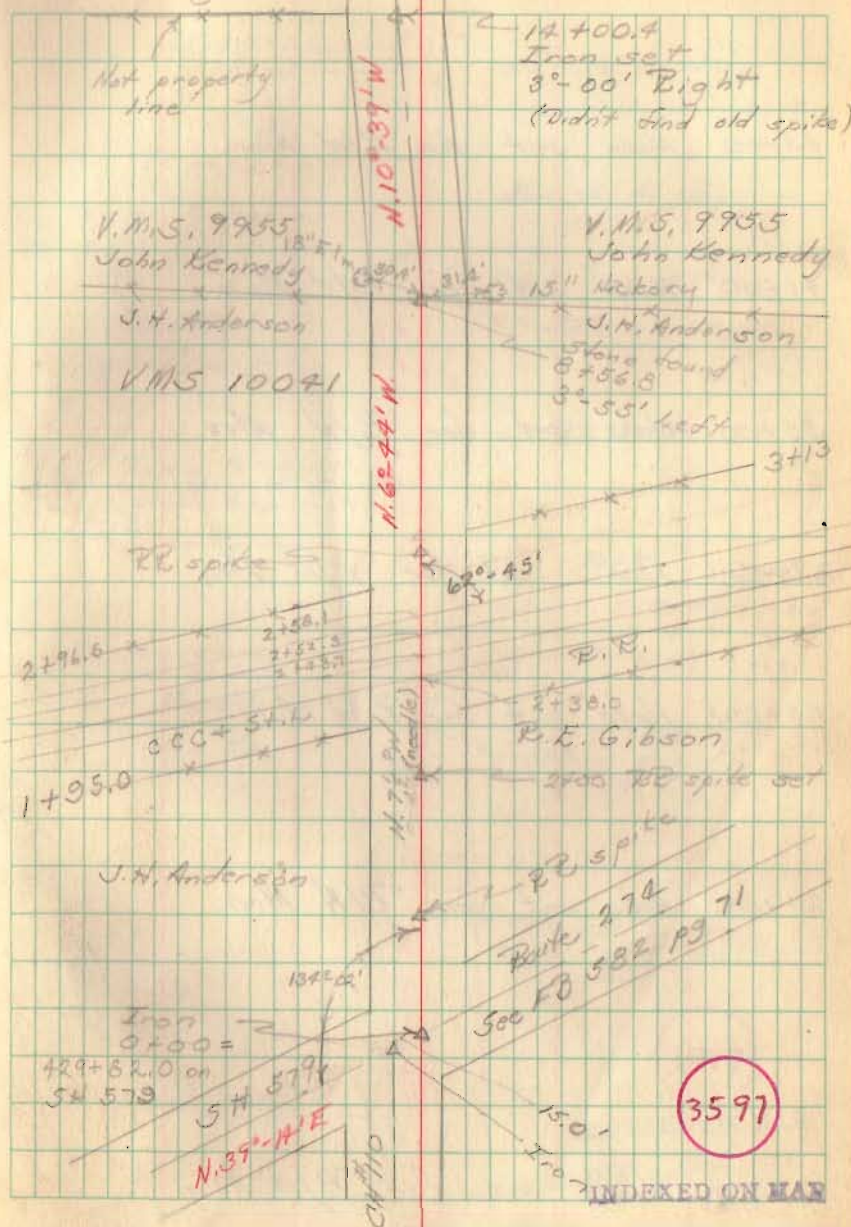
8456.8 Hub on left side only

3700 Hubs set for R/W Man

1700 Hubs set for R/W Man

Party: C. Kayser
D. Dodson
N. Kayser

Cloudy - cool
16 Apr. 1948



Rd 110 (contd)

45+00 Hubs set for R/W Mon.

41+00 Hubs set for R/W Mon

35+00 Hubs set for R/W Mon

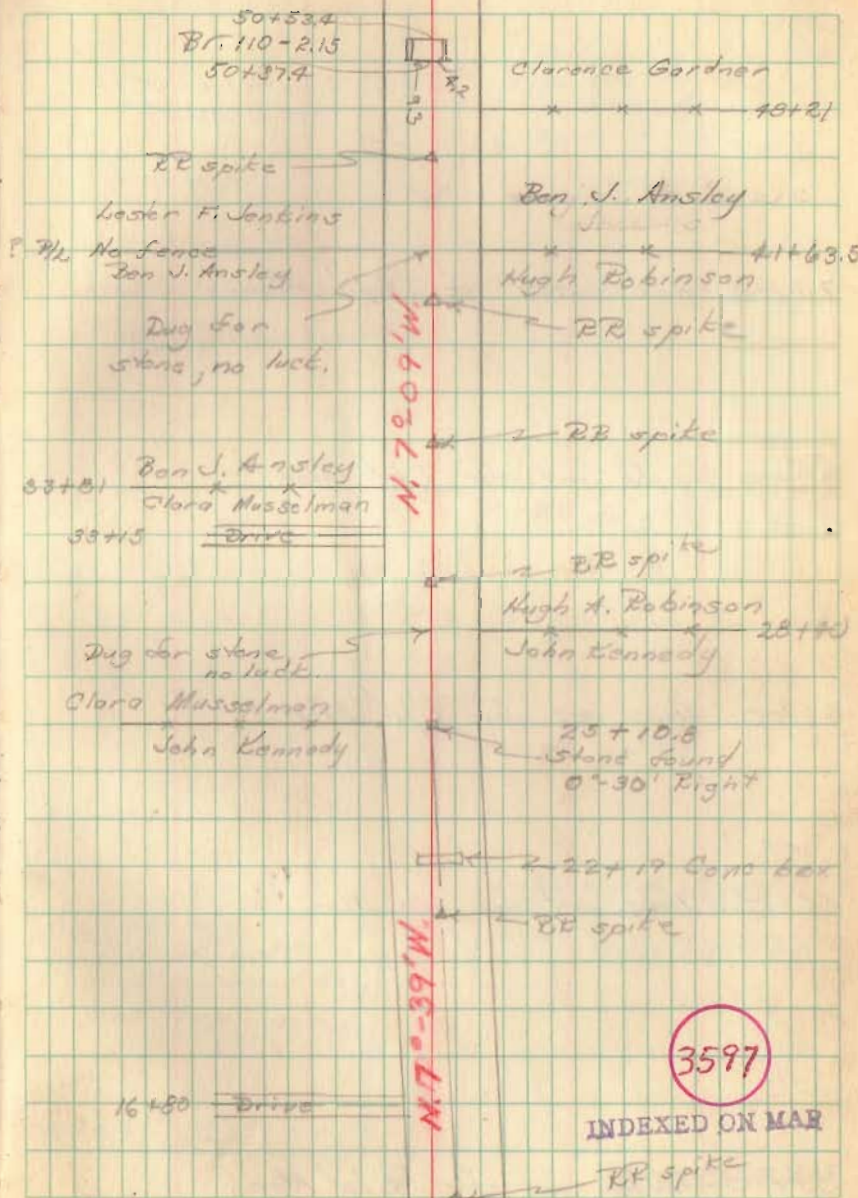
29+00 Hubs set for R/W Mon

25+10.8 Hubs set for R/W Mon

20+00 Hubs set for R/W Mon.

14+00.4 Hubs set for R/W Mon

19 Apr 48
Cloudy - windy



Rd 110 (contd)

74+00 Hubs set for R/W Men

70+00 Hubs set for R/W Men

64+00 Hubs set for R/W Men

58+05.0 Hubs set for R/W Men

53+00 Hubs set for R/W Men

42

