

FB 700

C.H. #48

6-30-53

Detriaks
Nichols
Shirk 12

John S Watkins
ctux

* * * * *
9+783

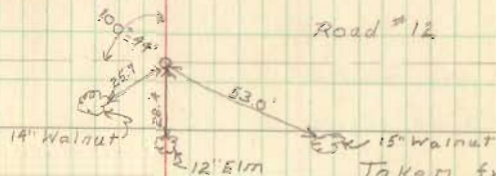
J.W. Titus

Erbie J. Wilgus

INDEXED ON MAP

5445

0+00 Stone Found
Hub placed on Top



Road #12

14" Walnut

15" Walnut

12" Elm

Taken from

F.B. 513 P. 75

FB 700

CH. # 48

ORS 17199
ORS 17100

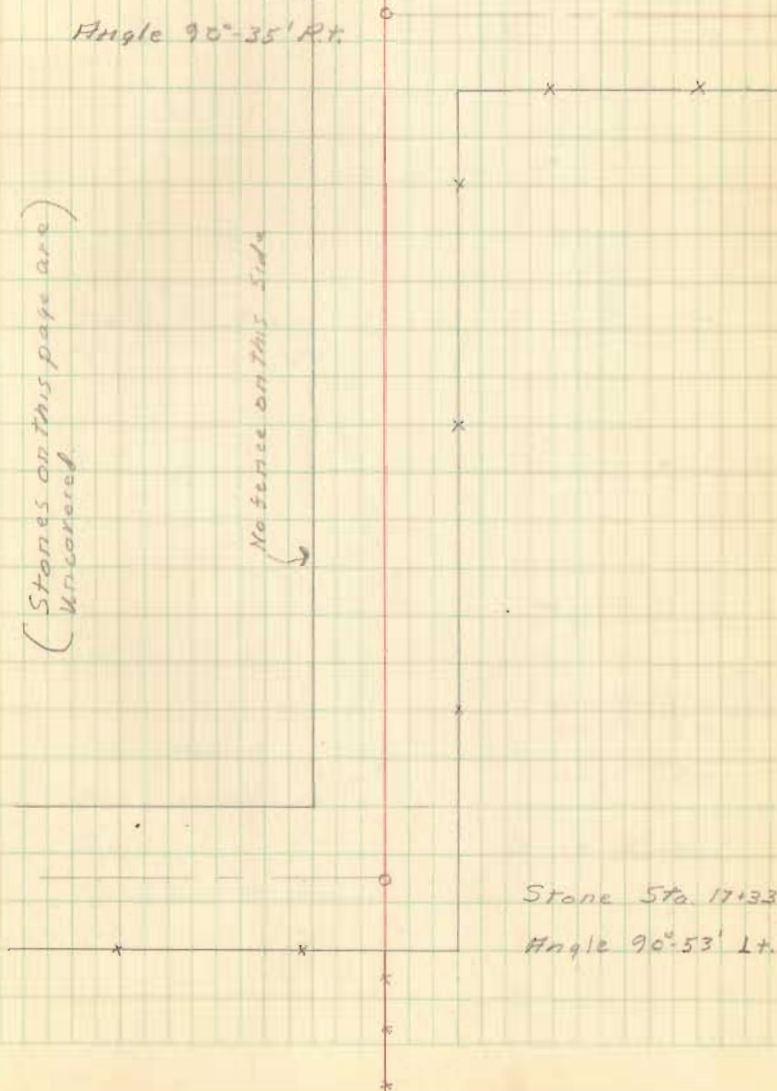
13

Stone Sta. 19725

Angle $90^{\circ}-35'$ R.H.

(Stones on this page are
Uncovered)

No fence on this side



Stone Sta. 17133

Angle $90^{\circ}-53'$ L.H.

FB 700

C.H. # 48

14

Iron Set Angle
16° 51' RT.

S. 70 1/2° E.

N. 82 3/4° E
386.5

Stone found

Hub placed on

Top.

Charlotte B. Gilbert
O.R.M.S. 12201

O.R.M.S. 13200

Elva Wilgus

FB 700

C.H. 48

15

Sharon L.
Mitchell et ux

x x

N. 85° E.

Wellington H.
Mitchell et ux

Ralph C. Willeke et ux
arms 9912

Hub
Angle 14°-41°

High Point of large Stone

arms 12201

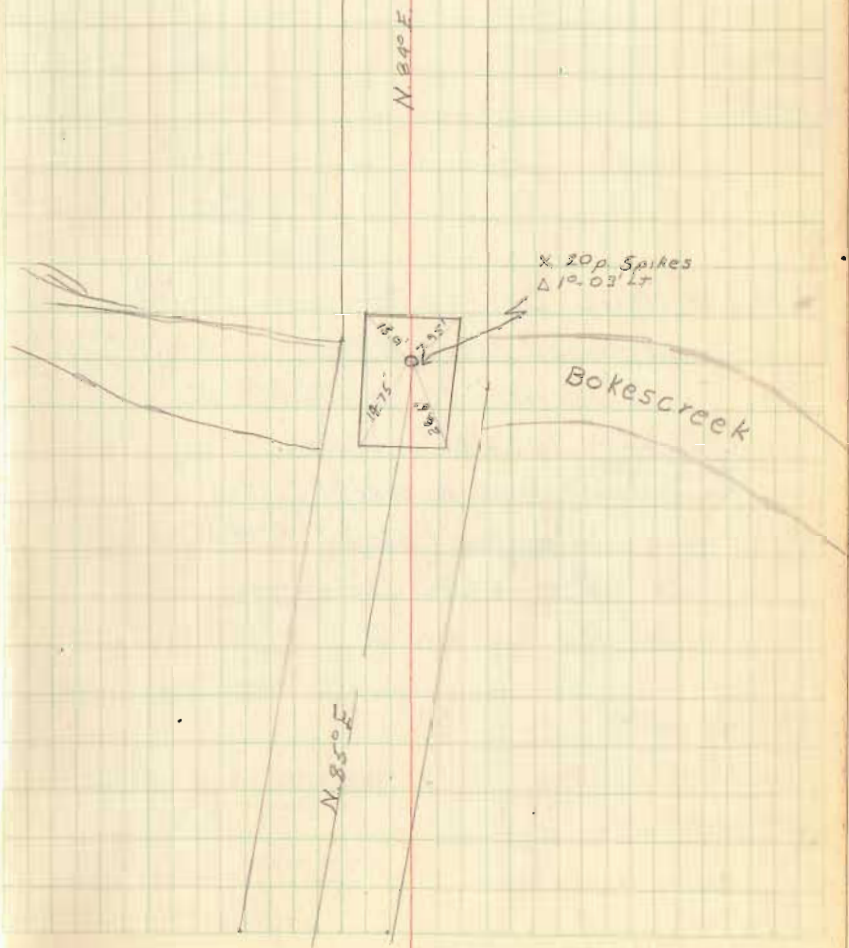
Charlotte B. Gilbert

S. 80 1/2° E.

FB 700

C.H. # 48

16



FB 701

C.H. # 48.

Road # 48 - June 60, 53
45' Wide

Detrick
Nichols
Shirk 20

John S. Watkins
ctax

7+72 x x x

J. W. Titus

NO. 101

Elbio V.
Wilgus

0+00 Stone
Found
Hub placed on
Top



3445

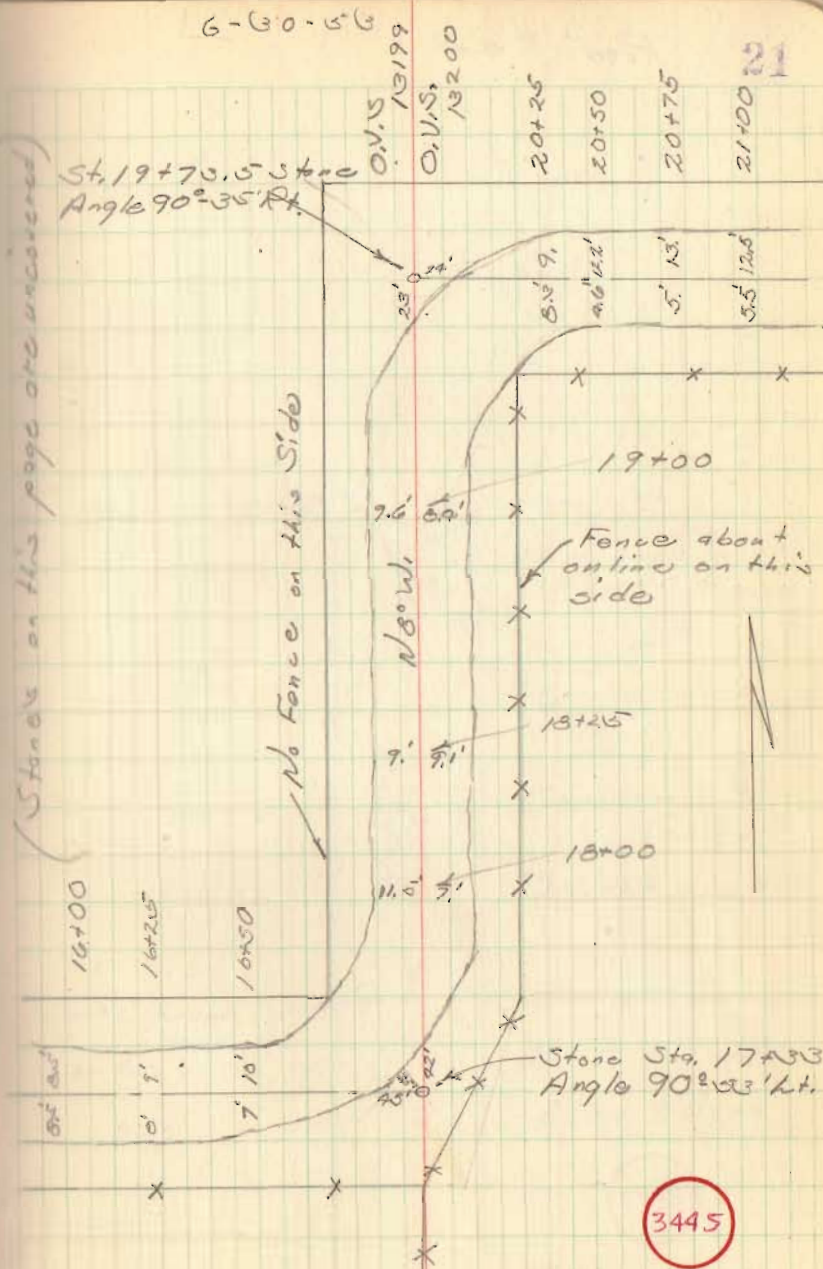
INDEXED ON MAP

FB 701

Rd. # 48

Note:

See F.B. 699 Page 34 for relocation
 from Sta 0+00 to 23+55.31 - 1960,
 Also Plan X-48.



FB 701

Road # 48

22

Iron Set
Angle 162°51' R

5907° E
1516.98
29 June 1970
C.N.

Power Pole
witness points,
capped roofing
Fd. 1/2" ϕ rein. bar 10x15
25 June 1970 C.N.

corner post
gravel drive

old factory
trama

Charlotte B.
Gilbert
O.V.M.S. 12201

X X X
O.V.M.S. 13200
Elba Wilgus

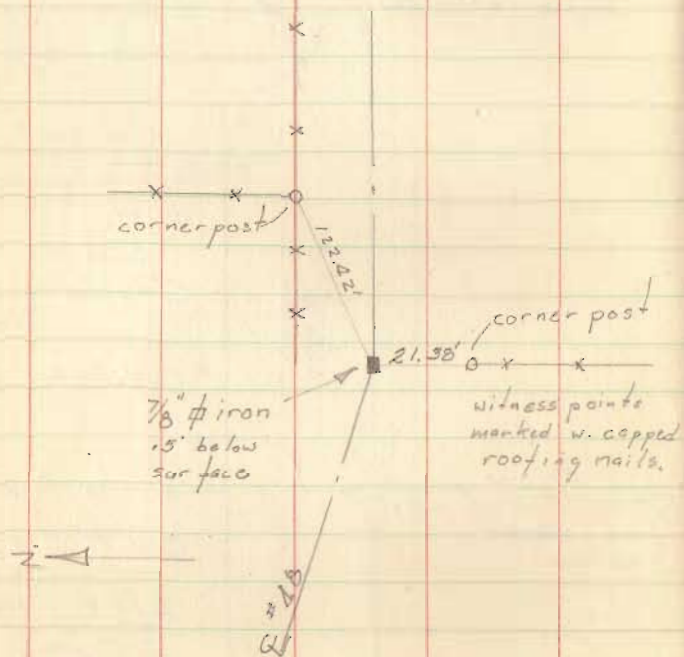
N 82 3/4° E
1086.51

Stone Found
Hub placed
on top

3445

INDEXED ON MAP

Road #48



Sharon K.
Mitchell

Wellington H.
Mitchell et ux

Ralph G. Willeke
et ux
O.V.M.S. 9912

High pt. of large stone

Hub
Angle $142^{\circ}41'Lt.$

Fd. hub 29 June 1970
Placed $7/8$ " # iron in
hub's, place I.C.N

O.V.M.S.
12201
Charlotte B.
Gilbert

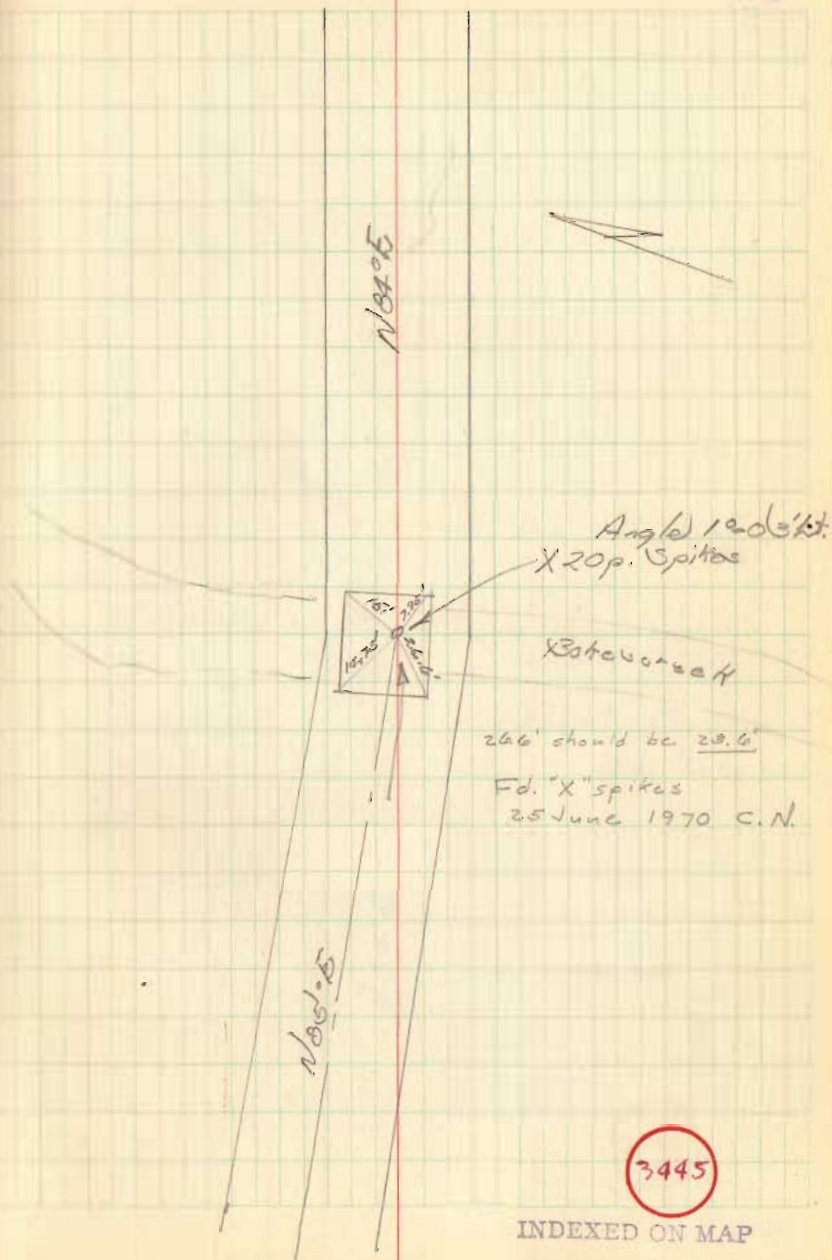
3445

INDEXED ON MAP

FB 701

Road # 48

24



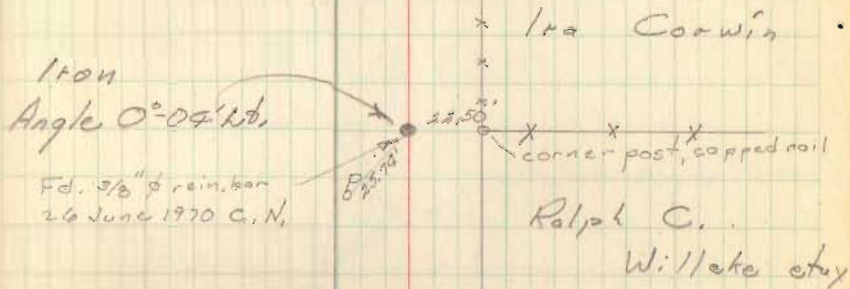
3445

INDEXED ON MAP

FB 701

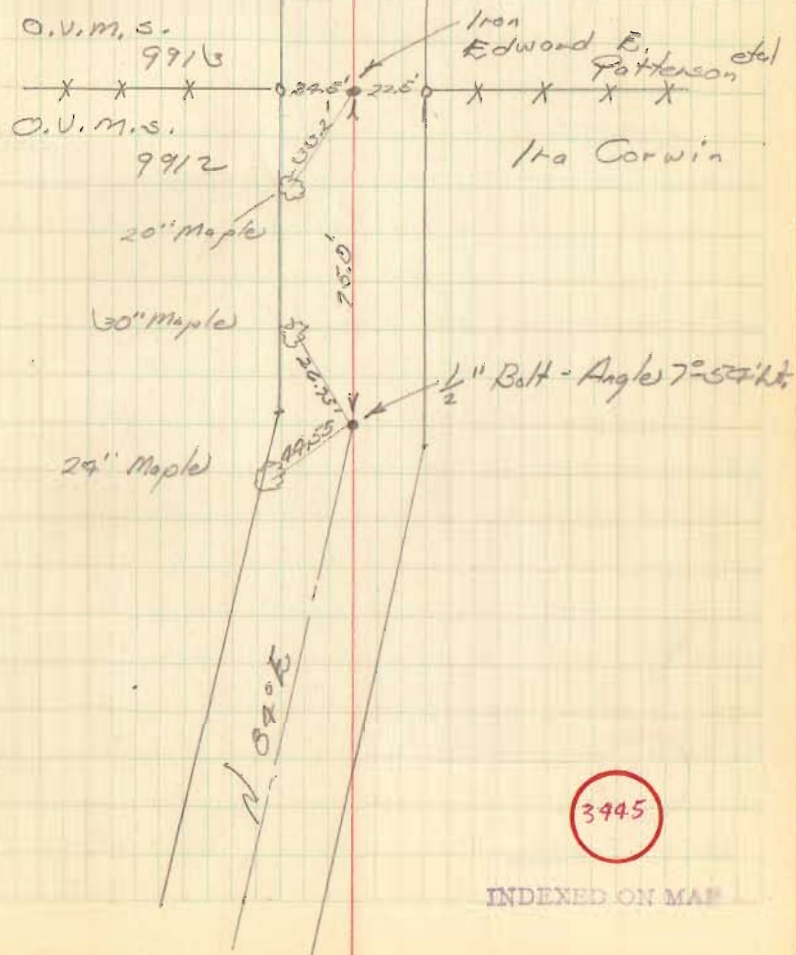
Rd. #48

25



3445

INDEXED ON MAP

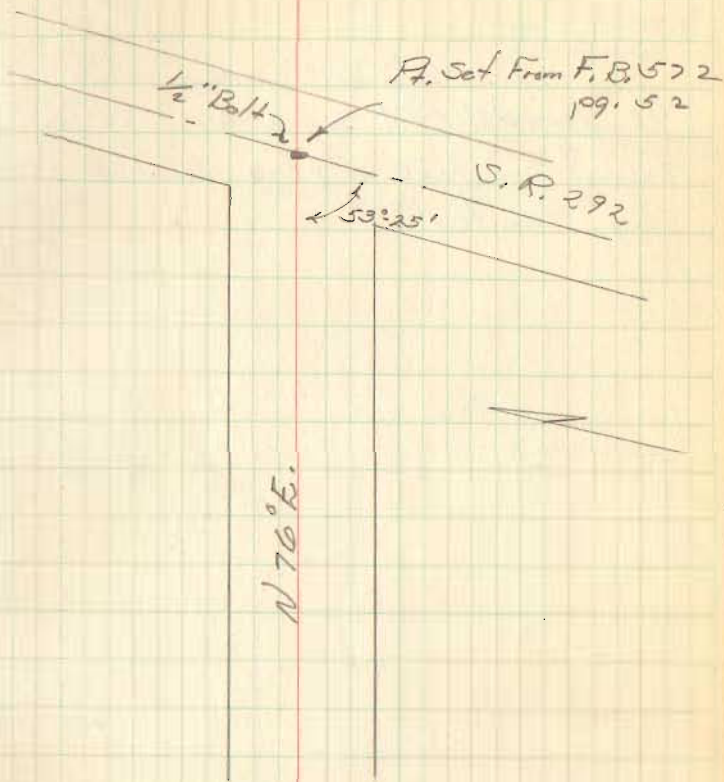


3445

FB 701

Rd. #48

27



3445

INDEXED ON MAP