

Road No. 57
Rushcreek Twp.

Sta. 0. Approx west line of Rushcreek Twp.
No fence or marker to indicate
true Twp. corner

Stakes placed 20' from E for a
40' Road.

Original Road 60'
See Vol. 4 Page 178 1835
Commissioner's
Journal.

Stakes 1-3-5-7-9 Etc.

Note:-

After placing Hub Mr. Dickison said
he believed Twp line about 20' further
west. Stake placed called 0+20
Cory Pipe 0+30

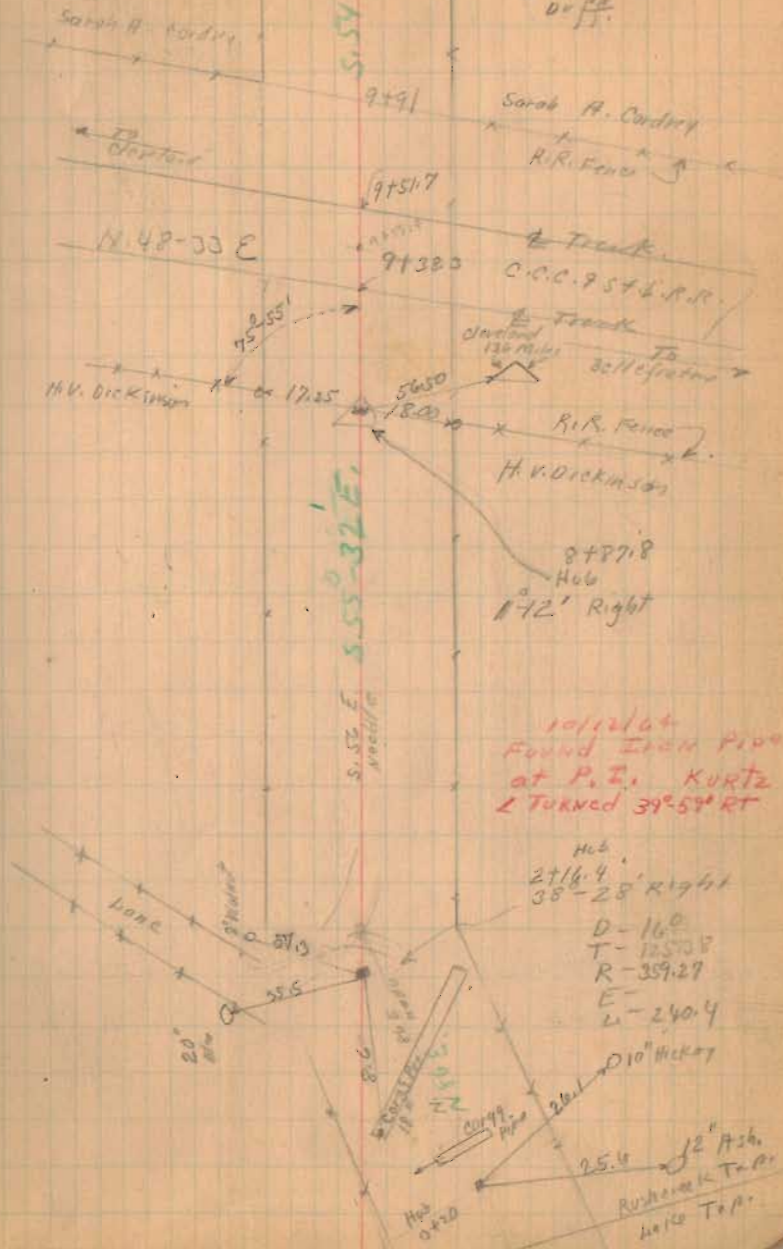
All measurements to P.I. for staking.

1768

INDEXED ON MAP

April-16-1932
Nice Day
With AT
McKinnon
Duff.

36



FB 559

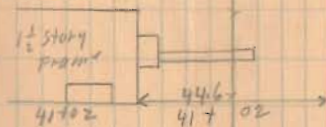
Road. 57

~~47 56
42 30
15 28~~

(1768)
INDEXED ON MAP

4/18/32

38



(No FENCE)

32754

37768

FB 559

Road 57

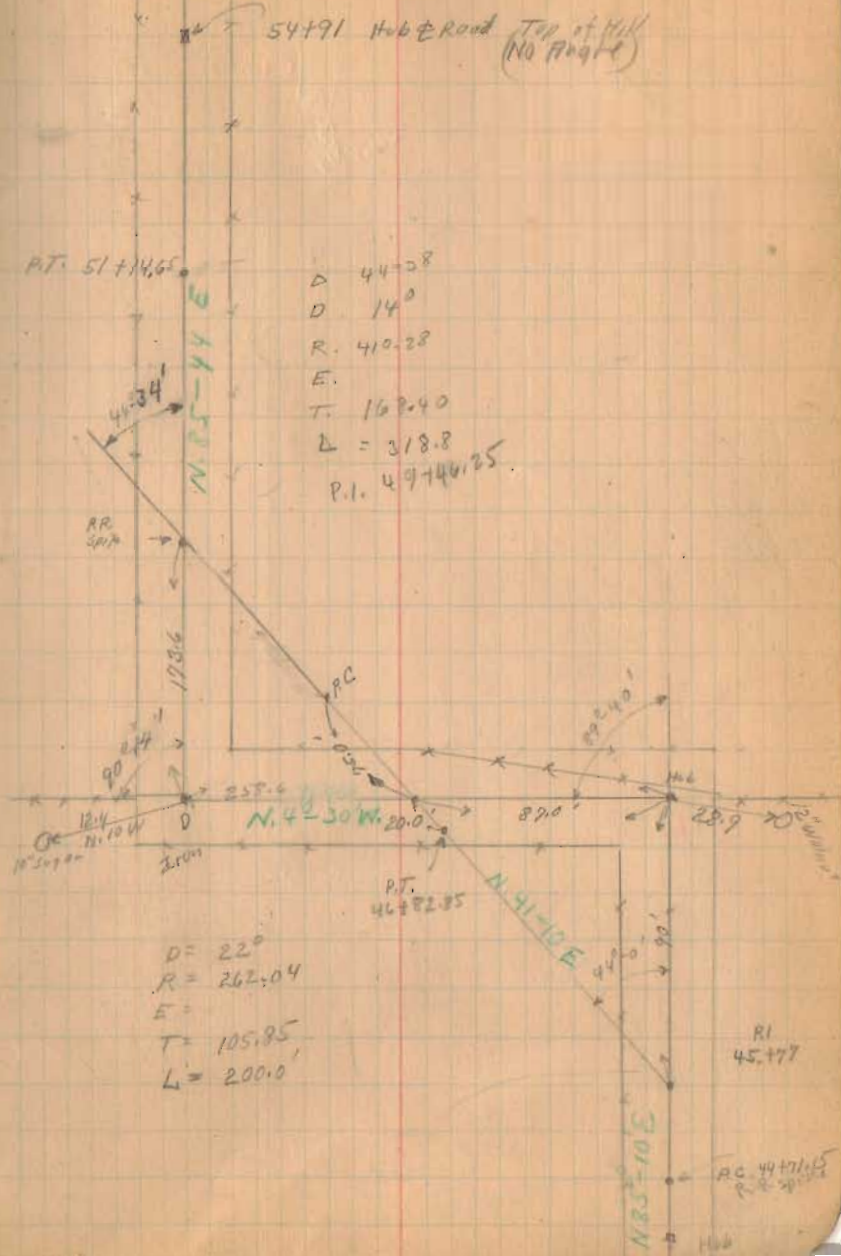
45+77 P.I.
5+27.65
51+14.63

105.85 ✓
20.00 ✓
95.00 ✓
168.40 ✓
16 P. 40
537.65

1267

4/19/32

39



FB 713

C.R. 57
Rushoreck Twp.
Logan Co., Ohio

8+90.42 - P.I. - Set $\frac{3}{8}$ " dia. capped
iron bar - Fd. $\frac{3}{4}$ " I.D. pipe
Here in 1984 - Ref: F.Bk. #
559, pg. 36; 1984 survey
by this office; X-57B
 $0^{\circ} 46' 02''$ Rt.

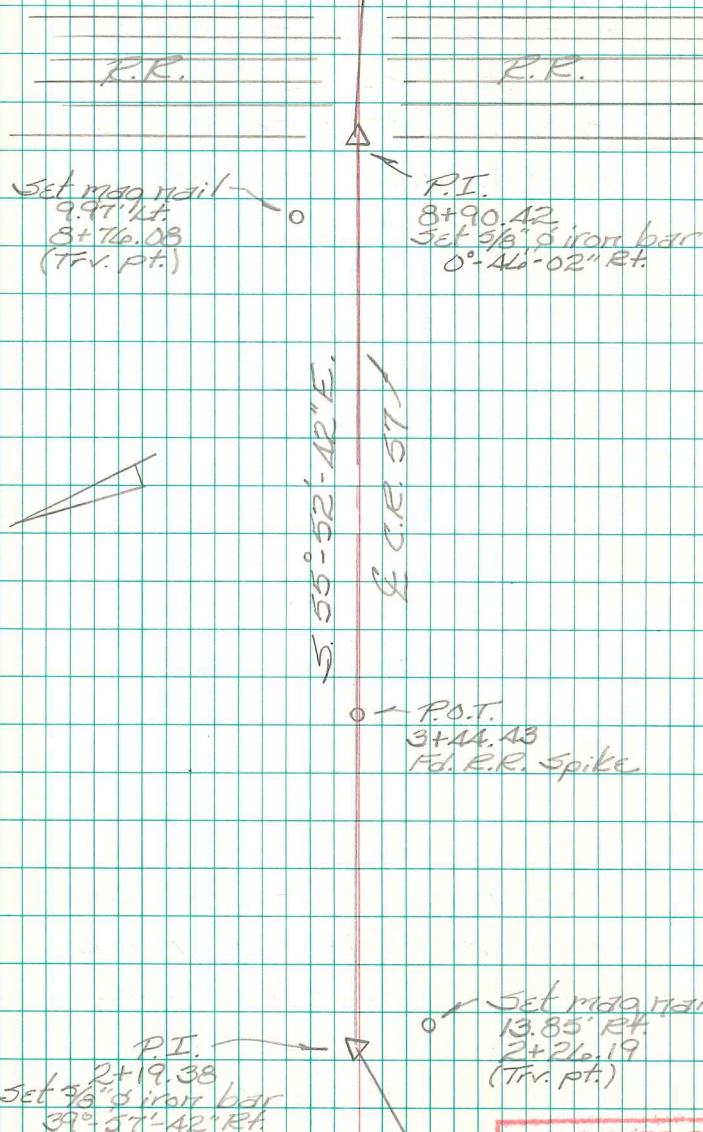
3+44.43 - P.O.T. - Fd. R.R. Spike
set in 1984.

2+19.38 - P.I. - Set $\frac{3}{8}$ " dia. capped
iron bar - Fd. $\frac{3}{4}$ " iron pipe
Here in 1984 - Ref: F.Bk. #
559, pg. 36; 1984 survey by this
office; 1954 Dodson Survey
(R-3376)
 $39^{\circ} 57' 42''$ Rt.

B. Simmons
G. Dappert
C. Dill

July 2014

55



INDEXED ON MAP
1368

FB 713

C.R. 57
Rushcreek Twp.
Logan Co., Ohio

15+70.08 - P.I. - Set $\frac{3}{8}$ " dia. capped
iron bar - Fd. $\frac{3}{4}$ " I.D. pipe
here in 1984 - Ref: F.B.K. #
559, pg. 37; 1984 survey
by this office; X-57B
- $49^{\circ}20'57''$ Rt.

15+43.48 - P.O.T. - Fd. $\frac{3}{8}$ " dia.
capped iron bar "Lee"
(R-2376) - Ref: F.B.K. # 570,
pgs. 5, 6, & 7. (R-1A38).

1A+86.43 - P.O.T. - Fd. R.R. Spike
set in 1984.

8+90.42 - P.I. - Set $\frac{3}{8}$ " dia. capped
iron bar - Fd. $\frac{3}{4}$ " I.D. pipe
here in 1984 - Ref: F.B.K. #
559, pg. 36; 1984 survey
by this office; X-57B
 $0^{\circ}46'02''$ Rt.

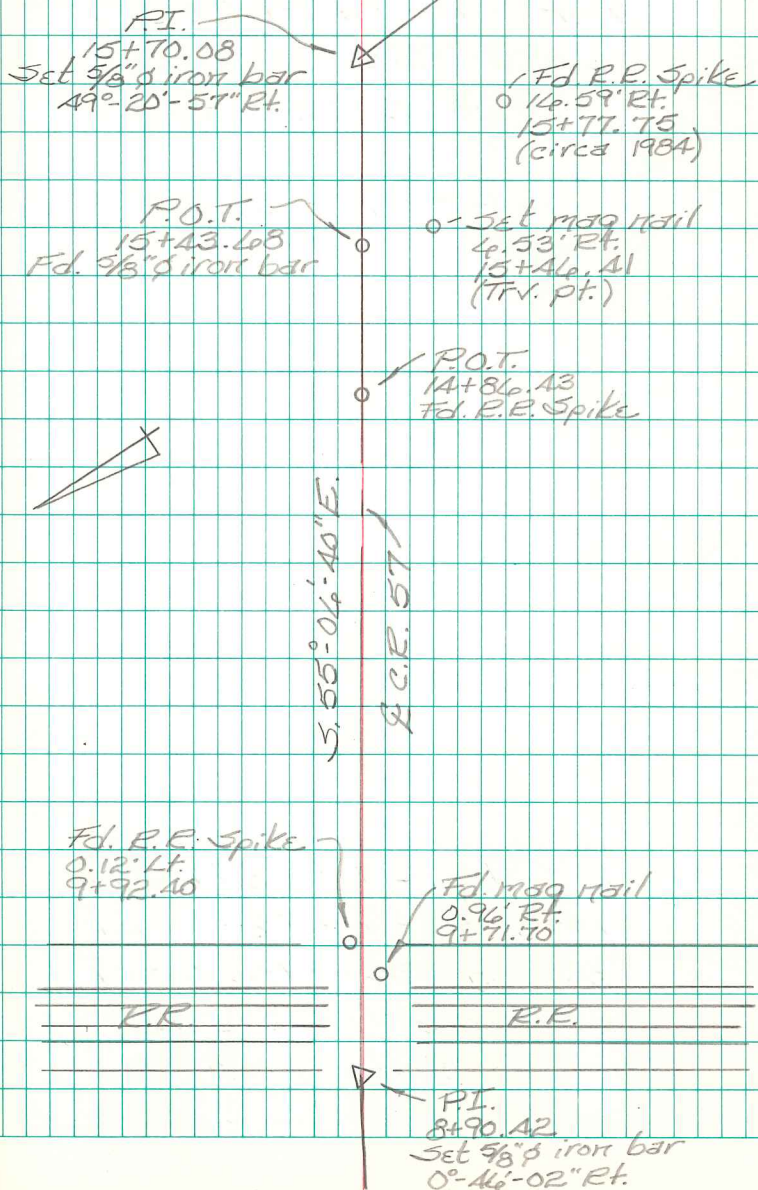
INDEXED ON MAP

INDEXED ON MAP
1368

B. Simmons
G. Dappert
C. Dill

July 2014

54



FB 713

C.R. 57
Rushcreek Twp.
Logan Co., Ohio

22+42.42 - P.I. - Fd. $\frac{3}{8}$ " dia. iron
bar - Ref: F.Bk. # 559, pg. 37
& plan X-57B.

89°-51'-05" Lt.

21+42.42 - P.O.T. - Set R.R. Spike
in 1984

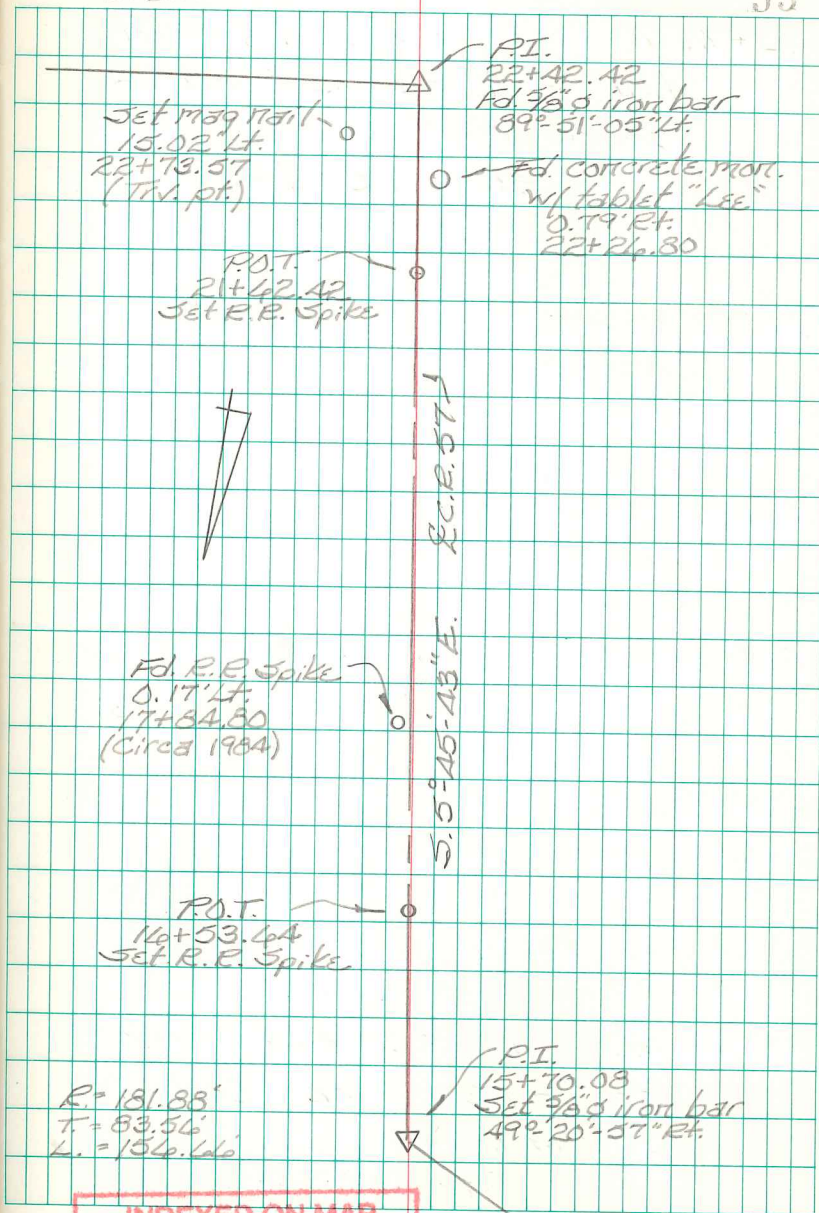
14+53.64 - P.O.T. - Set R.R. Spike

15+70.08 - P.I. - Set $\frac{3}{8}$ " dia. capped
iron bar - Fd. $\frac{3}{4}$ " I.D. pipe
here in 1984 - Ref: F.Bk. #
559, pg. 37; 1984 survey
by this office; X-57B
49°-20'-57" Rt.

B. Simmons
G. Dappert
C. Dill

July 2014

55



INDEXED ON MAP
1368

FB 713

C.R. 57
Rushcreek Twp.
Logan Co., Ohio

A5+74.78 - P.I. - Fd. $\frac{1}{8}$ " dia. iron
bar w/ Al cap. - Set in 1984
survey by this office - Ref:
F.BK # 559, pg. 39 & plan X-57B.
43°-57'-20" Lt.

AA+70.93 - P.O.T. - Set R.R. Spike
in 2001

A1+24.09 - P.O.T. - Set mag nail
in 2001.

23+24.22 - P.O.T. - Fd. R.R. Spike.

23+22.42 - P.O.T. - Fd. R.R. Spike
set in 1984.

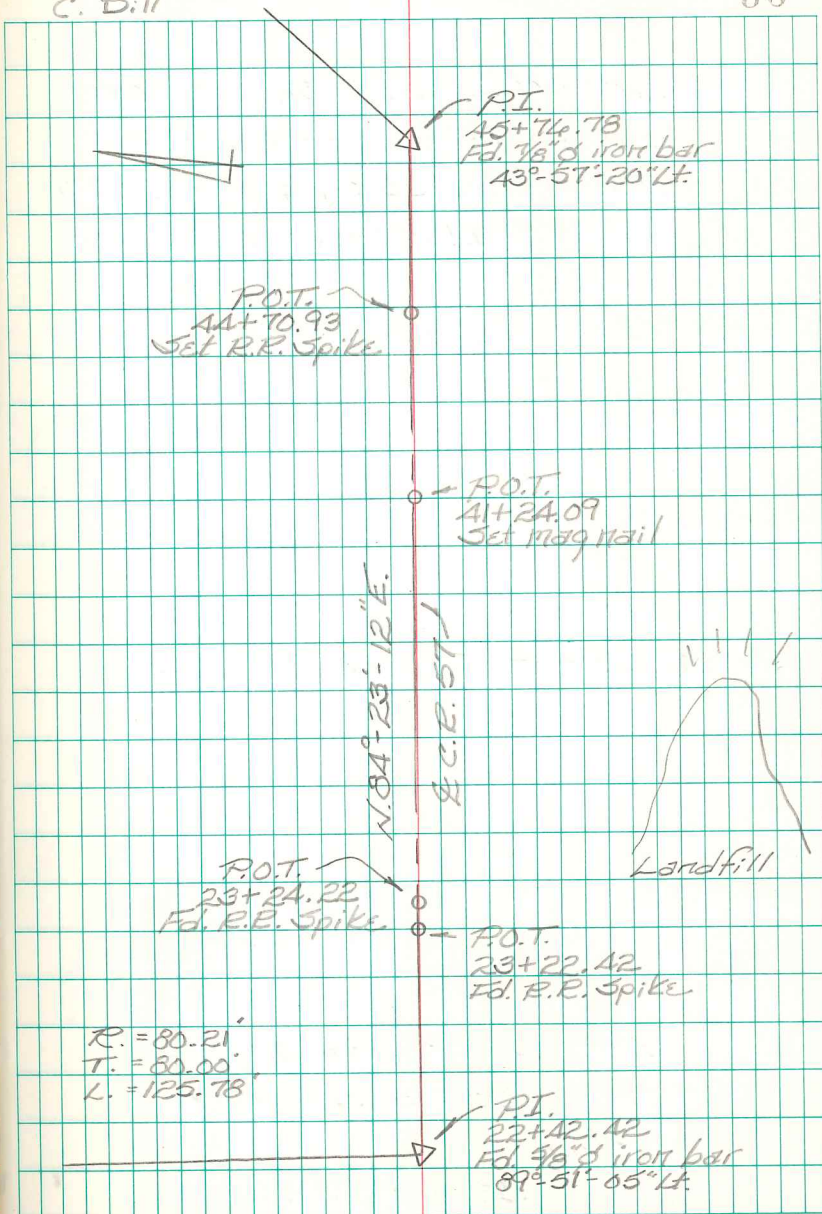
22+42.42 - P.I. - Fd. $\frac{3}{8}$ " dia. iron
bar - Ref: F.BK. # 559, pg. 37
& plan X-57B.
89°-51'-05" Lt.

INDEXED ON MAP

B. Simmons
G. Dappert
C. Dill

July 2014

56



INDEXED ON MAP
1368

FB 713

C.E. 57
Rushcreek Twp.
Logan Co., Ohio

49+46.68 - P.I. - Set $\frac{1}{8}$ " dia. iron
bar w/ Al. cap in 1984 -
Ref: F.BK. 559, pg. 39. X-57B;
1984 & 2001 survey by this
office.

$44^{\circ}-33'-48''$ Rt.

47+78.28 - P.O.T. - Set R.R. Spike
in 2001

46+82.43 - P.O.T. - Set R.R. Spike
in 2001

45+76.78 - P.I. - Fd. $\frac{1}{8}$ " dia. iron bar
w/ Al. cap - Set in 1984 survey
by this office - Ref: F.BK. #
559, pg. 39; plan X-57B;
1984 & 2001 survey by this
office.

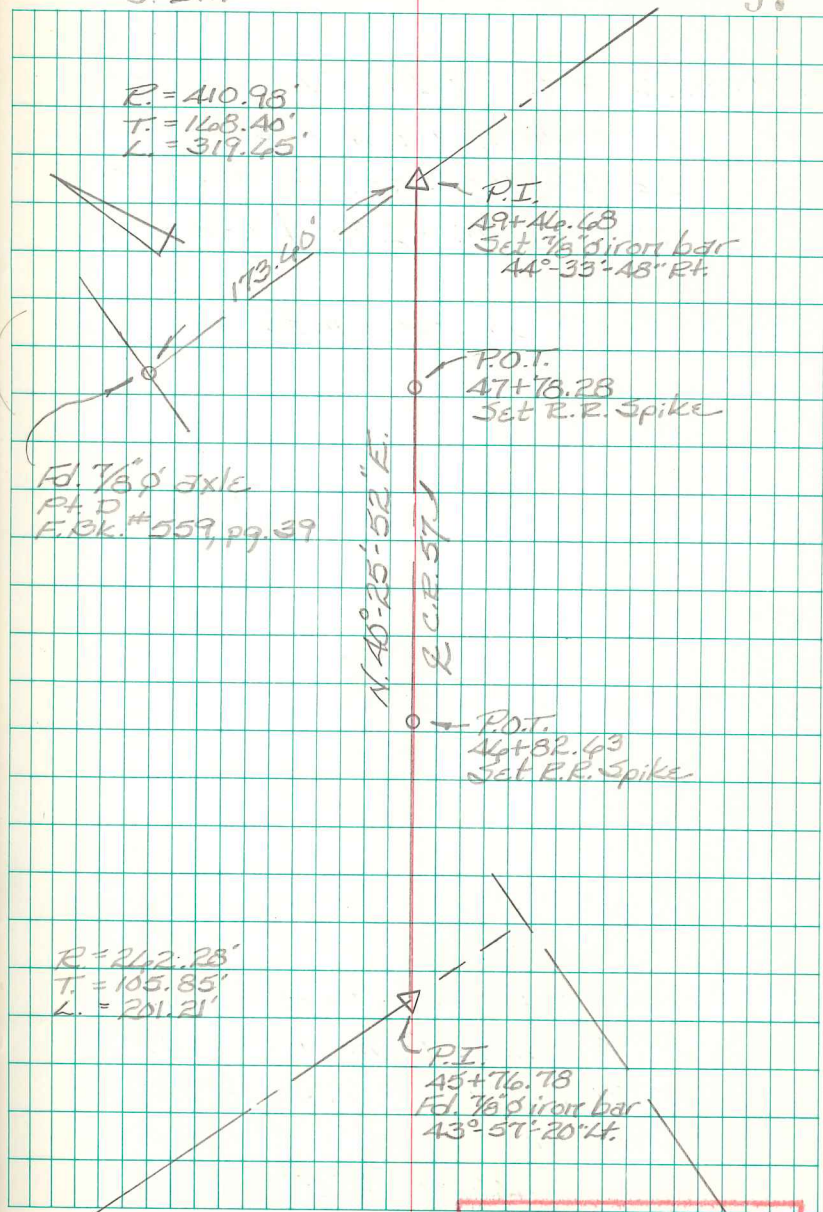
$43^{\circ}-57'-20''$ Lt.

INDEXED ON MAP

B. Simmons
G. Dappert
C. Dill

July 2014

57



INDEXED ON MAP

368

FB 713

C.R. 57
Rushcreek Twp.
Logan Co., Ohio

40+08.55 - P.I. - Fd. 1" dia. iron bar
in monument box - @ intersection
C.R. 57 w/ C.R. 9 - Ref: F.Bk. #
559, pg. 40 - End of this survey.

55+31.86 - P.O.T. - set mag nail
in 2001.

55+03.71 - P.O.T. - Set R.R. Spike
in 2001.

51+15.08 - P.O.T. - Set R.R. Spike
in 2001.

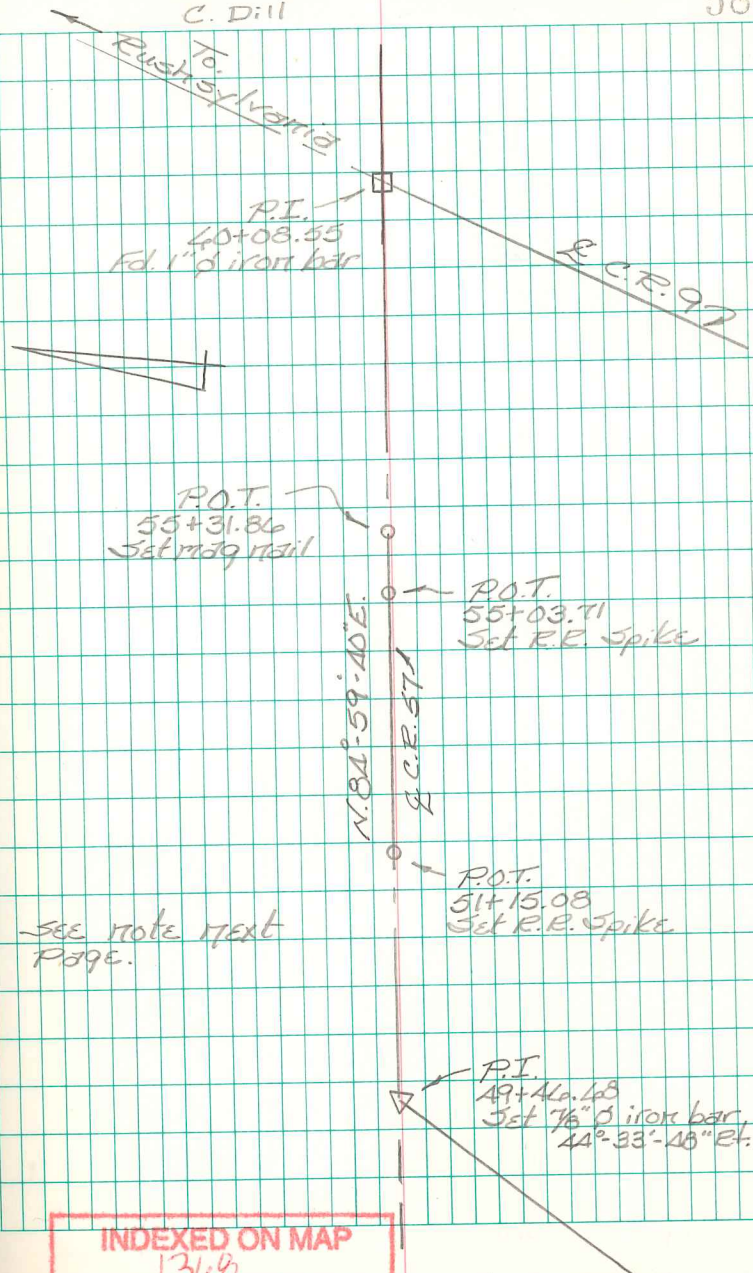
49+46.68 - P.I. - Set $\frac{1}{8}$ " dia. iron bar
w/ Al cap in 1984 - Ref: F.Bk. #
559, pg 39; X-57B; 1984 &
2001 survey by this office.
44°-33'-48" Rt.

INDEXED ON MAP

B. Simmons
G. Dappert
C. Dill

July 2014

58



see note next
page.

INDEXED ON MAP

368

FB 713

- C.R. 57
Rushcreek Twp.
Logan Co., Ohio

B. Simmons
G. Dappert
C. Dill

July 2014

59

Surveys were made by this office on part of C.R. 57 in 1984 & 2001 (Twp. line East to C.R. 9). Road construction destroyed three of the P.I.'s that were found and tied down during the 1984 survey. Those P.I.'s were never reset until now. Other points (P.O.T.'s) were set during those surveys the info of which never made it into a field book. This entry was made to correct that situation.

C.D.D.

INDEXED ON MAP

INDEXED ON MAP

INDEXED ON MAP
1368