

Road #114
Rushcreek
Time

May 21. 50

May 22. 50

A.M. Renick	1/2	1
Harold Taylor	1/2	1
L.H. Titus	X	1/2
Robt. Stephenson	X	1/2

Lunches

.75 ← 160

133
INDEXED ON MAP

send checks to L.H. Titus R.R. #2 Ridgeway

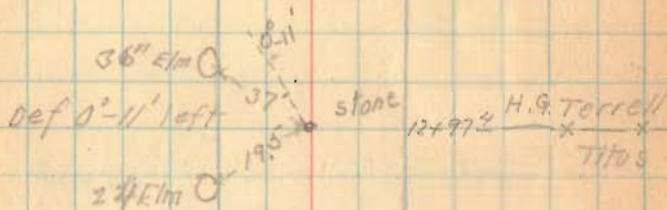
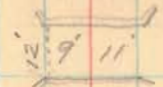
Road #114

17

Harry Brougher
x x 17+31
L.H. Titus

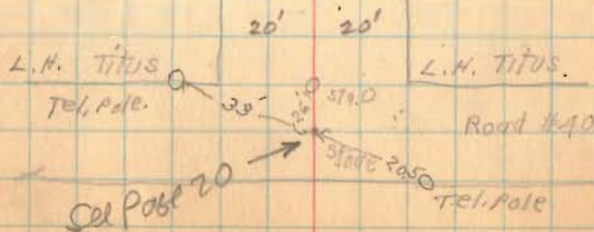
H. 6 W.

15+44 Concrete Bridge



7+52 Drive

H. 5 3/4 W.



114

1313
INDEXED ON MAP

18

WIDE TITS

~~43+34~~ Drive

x — x — 42+32
Harry Brughler

Drive ~~24+59~~

16" dia @ 22.5' x 21.5' x 33+19' — x — x
Chester Fish
10" Robert Stephenson
Stone Hickory

5/100 Fish Ditch Outlet

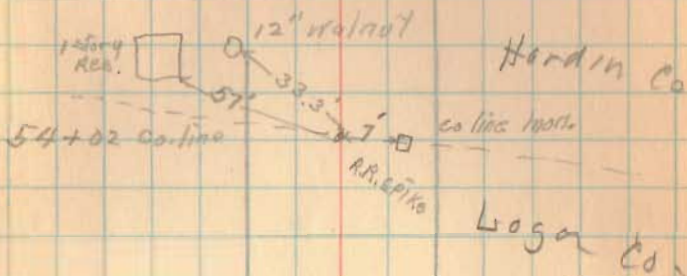
~~57+53~~ Drive

Robt Stephenson
17+76 — x — x
H.G. Terrel

#114

(131)
INDEXED ON MAP

19



Edw. B. W. (Mar 7th)

x — x — 53+36

Willis F. Mue

49+40.6 — x — x
Chester Fish

46+35 Con. Bridge

