

Lee Surveying and Mapping Co.



Farm Surveys • Lot Surveys • Topography • Subdivisions • Construction Layout

855 EAST SANDUSKY AVENUE
BELLEFONTAINE, OHIO 43311

(513) 593-5780

CLAYTON M. LEE, P.S.
JEFFREY I. LEE, P.S.

FUNK TO STUMP

Lying in V.M.S. 9953, Rushcreek Township, Logan County, Ohio.

Being off the south side of that 28.4 acres in the name of Donald C. Funk (Volume 191, Page 237) and being more particularly described as follows:

Beginning at a railroad spike set on the center-line of County Road 111 marking the southeast corner of said 28.4 acres (Station 65+40.1 in County Engineer's Field Book 707, Page 7).

THENCE, with the said road center-line, S 79°-30' W, a distance of 483.14 feet to a railroad spike set at the southwest corner of said 28.4 acre tract, the same being the southeast corner of grantor's 59.15 acre tract (Volume 176, Page 97).

THENCE, with a fence line between said two tracts, N 9°-47' W, a distance of 362.04 feet to a 5/8" iron rod, passing an iron rod set at 21.00 feet.

THENCE, parallel to the road, N 79°-30' E, a distance of 479.45 feet to a 5/8" iron rod set on the east line of said 28.4 acre tract and also being the west line of the John Roof 147.14 acre tract (Volume 319, Page 502).

THENCE, with the line between said two tracts, S 10°-22' E, a distance of 362.01 feet to the point of beginning, passing a 5/8" iron rod at 341.01 feet.

Containing 4.00 acres.

Prepared by:

Clayton M. Lee
Clayton M. Lee
Professional Surveyor No. 6181
October 17, 1985

This description prepared from an actual field survey.



ORIGINAL STAMP IN GREEN
L-1335

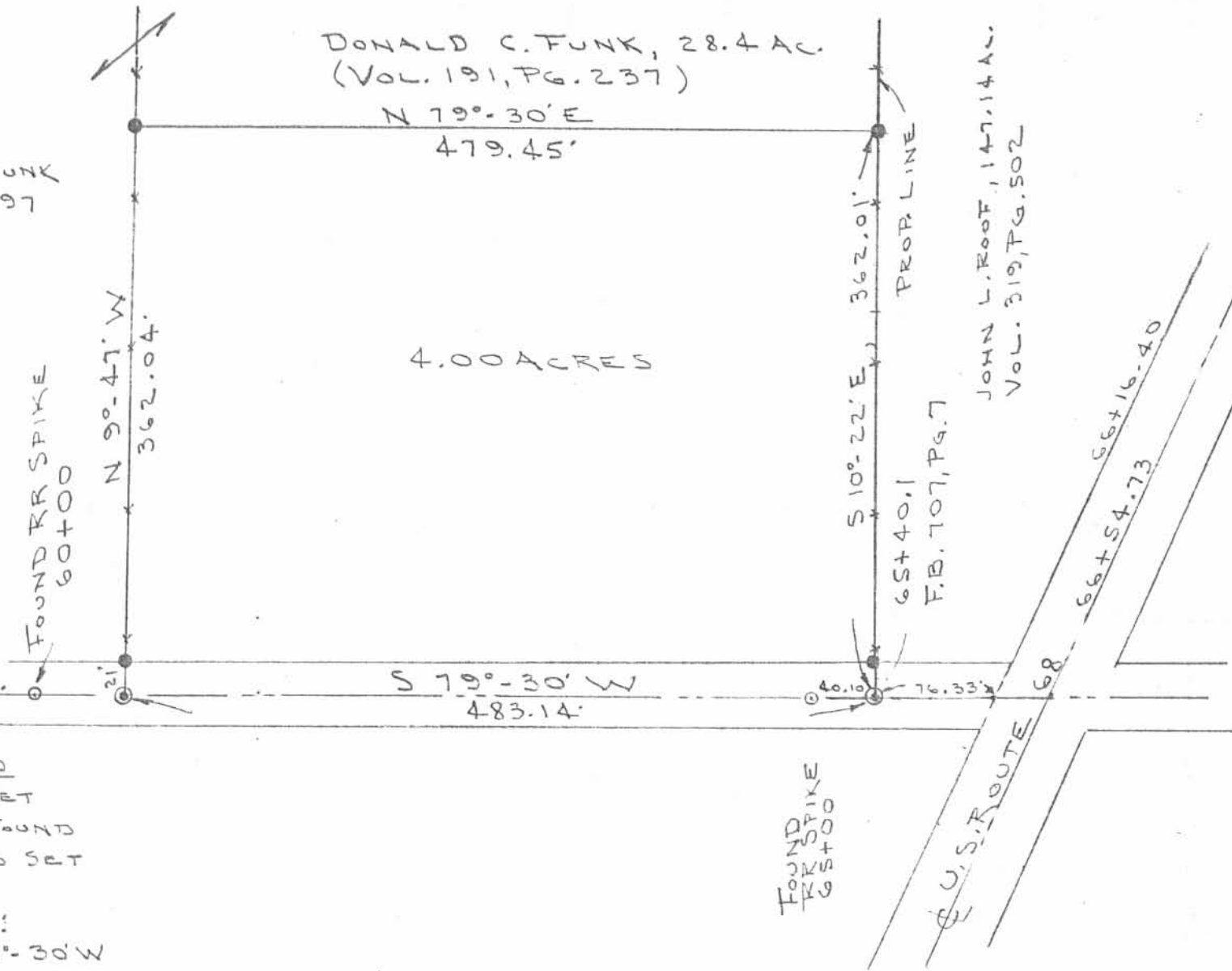
DONALD C. FUNK
Vol. 176, Pg. 97
59.15 AC.

DONALD C. FUNK, 28.4 AC.
(Vol. 191, Pg. 237)

JOHN L. ROOF, 147.14 AC.
Vol. 319, Pg. 502



SCALE - 1" = 100'



4.00 ACRES

65+40.1
F.B. 107, Pg. 7

66+16.40
66+54.73

LEGEND

- ⊙ RR SPIKE SET
- RR SPIKE FOUND
- 5/8" IRON ROD SET

BEARING BASIS:
C.R. 111 = S 79°-30' W

SURVEY OF 4.00 ACRES OUT OF THE
DONALD FUNK 28.4 ACRE TRACT (Vol. 191, Pg. 237)
V.M.S. 9953, RUSHCREEK TWP.
LOGAN COUNTY, OHIO

INDEXED ON MAP
906 IP

By: *Jeffrey I. Lee*
JEFFREY I. LEE
PROF. SURVEYOR 6359



OCT. 15, 1985

ORIGINAL STAMP IN GREEN
1-1225-C