

Mountain Lake Survey V.M.S. 3327

- A - Stake N.E. Corner Kitchen Land Sec 8" Book 419 Page 38
- B. Edge of water (Ice 1-30-28)
- C " " " (" 1-30-28)
- D. 12" soft Maple Looks O.K. for Live.
- E Fence corner
- F Double Orange 1' South of Fence DE.
- G. N.E. Corner of V.M.S. 3327
- DE, Produced To G.H. Fence Line
- H. Fence K.J. Produced.
- I Fence corner
- J. 15" Hockberry on Line 9' west of I
- K Fence corner
- L 12" soft Maple
- M Edge of water (Ice 1-30-28)
- N stake Sec "D" Book 419 Page 38.

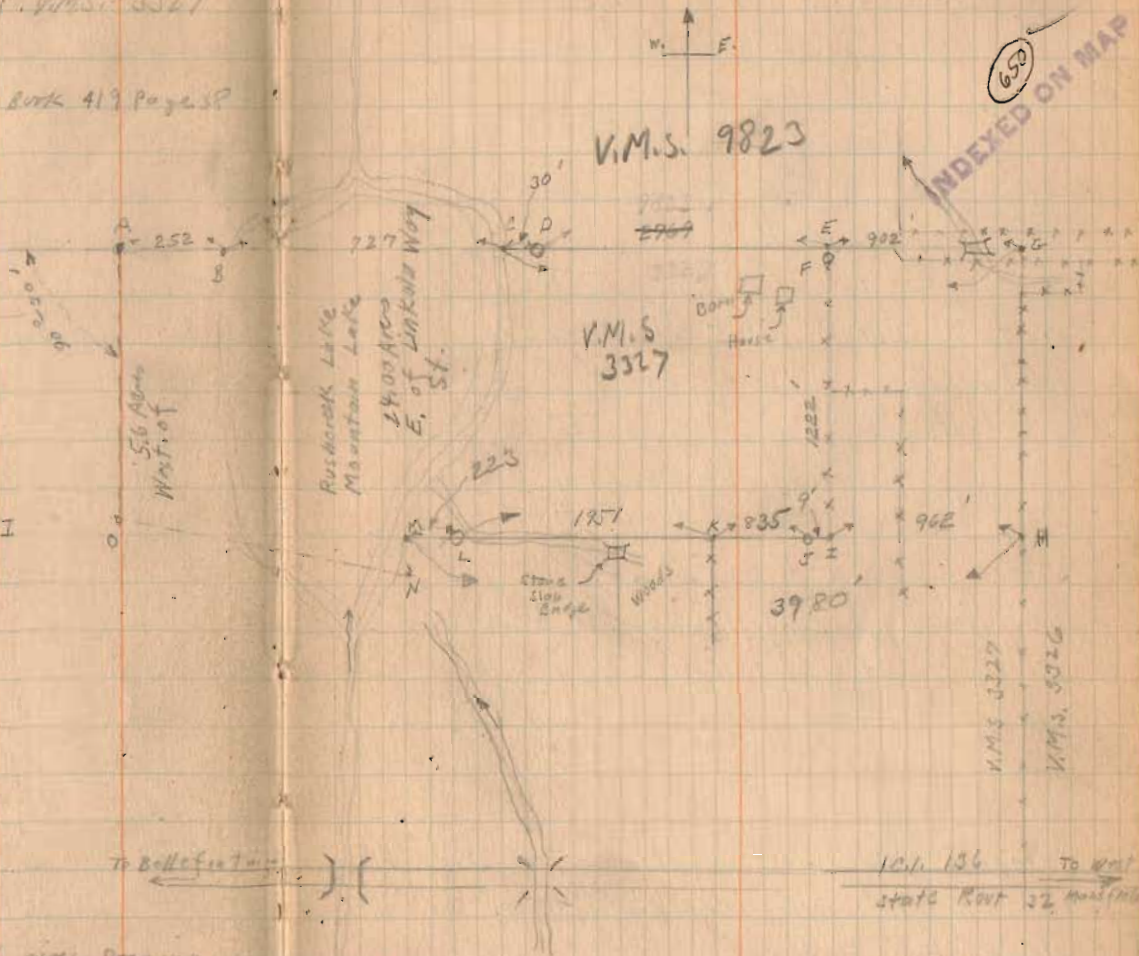
M.H. About 45'

Note Survey Book A Page 305 gives Drawing showing CG. 30195' by H.M. 2980.0' by H.G. 1188'

Note Distance from A To D was measured on the ice, 1-30-28.

Jan 30, 1928
cloudy - cold
Wright
Mr Spain.

4



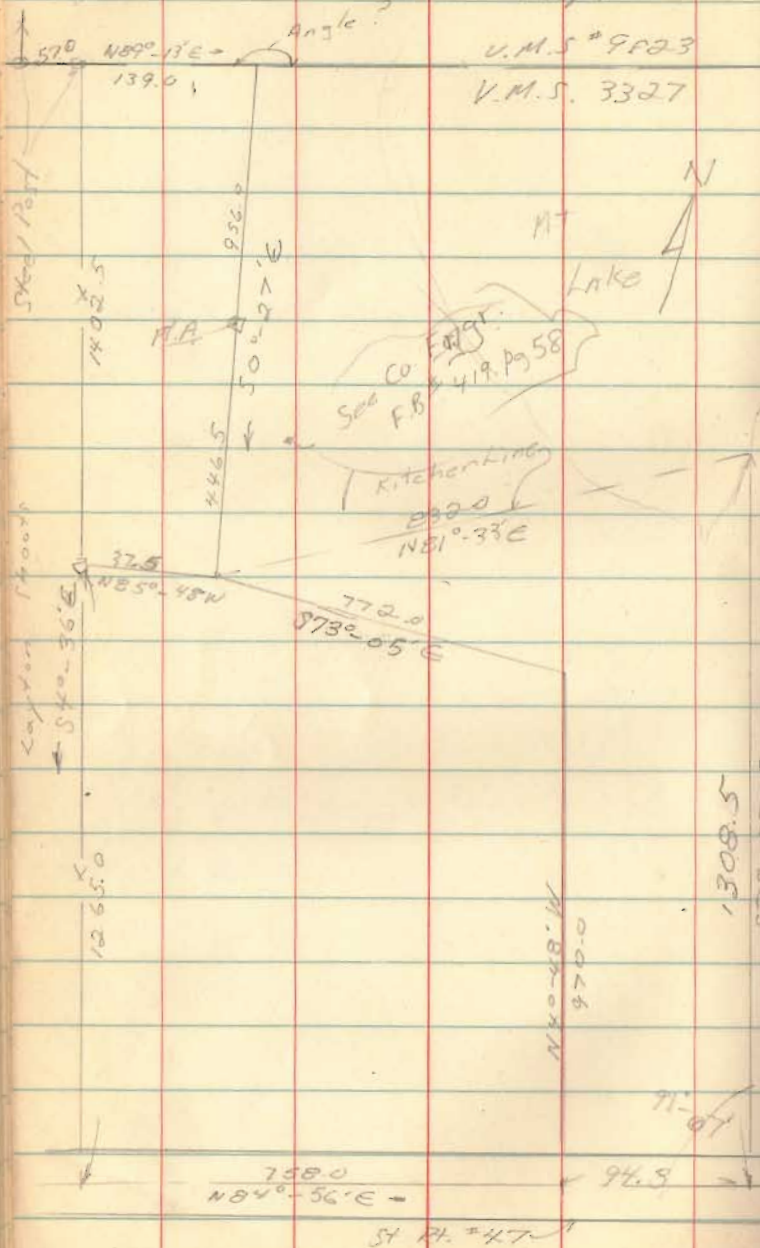
3201
30195
651.5
41.3 fms.

3780
3200
20

Petersime
Jeff. & Rushcreek Twp.

July, 1965

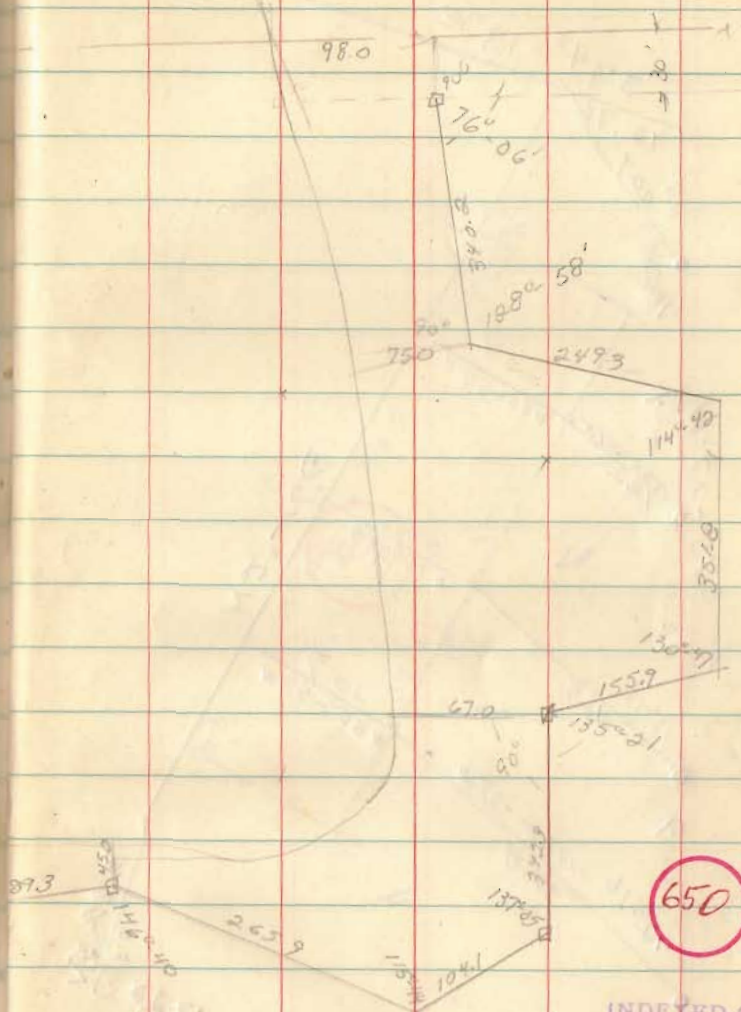
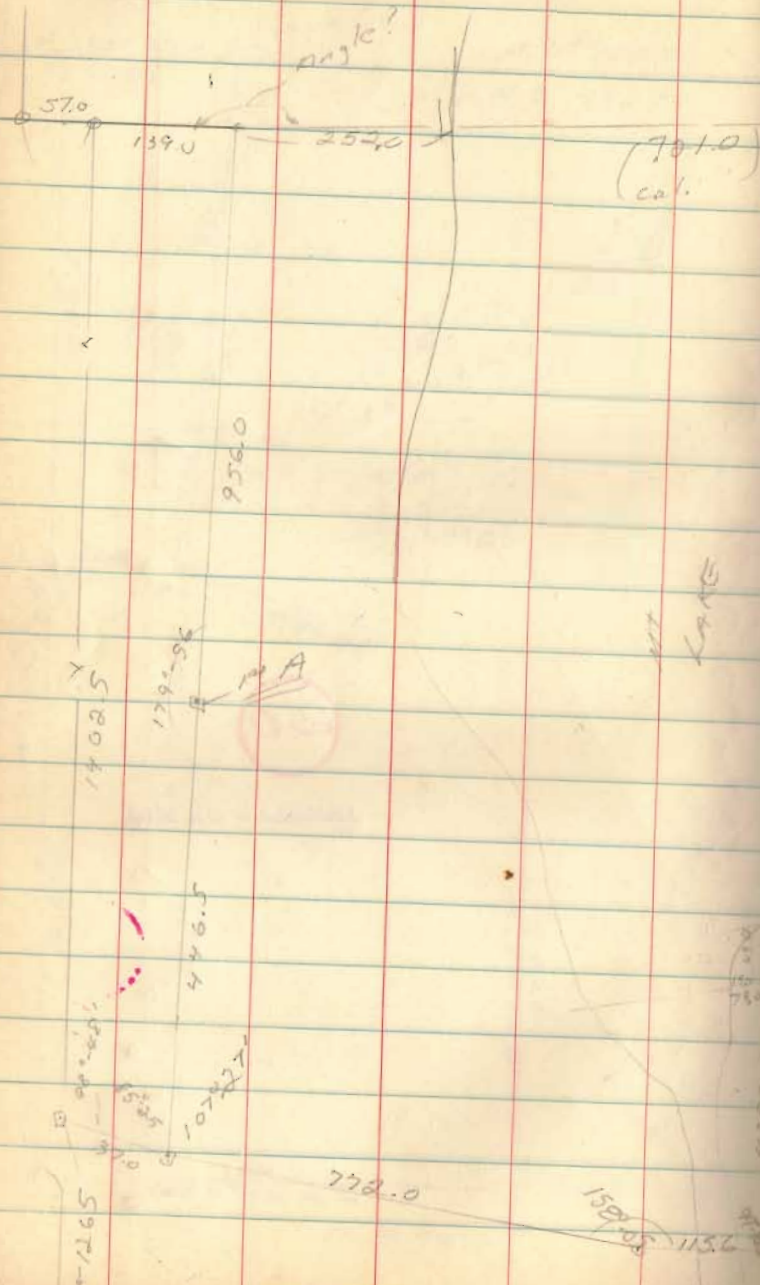
68



O.K. Shirk FB 8

650

INSTEAD ON MAP



INDEXED ON MAP