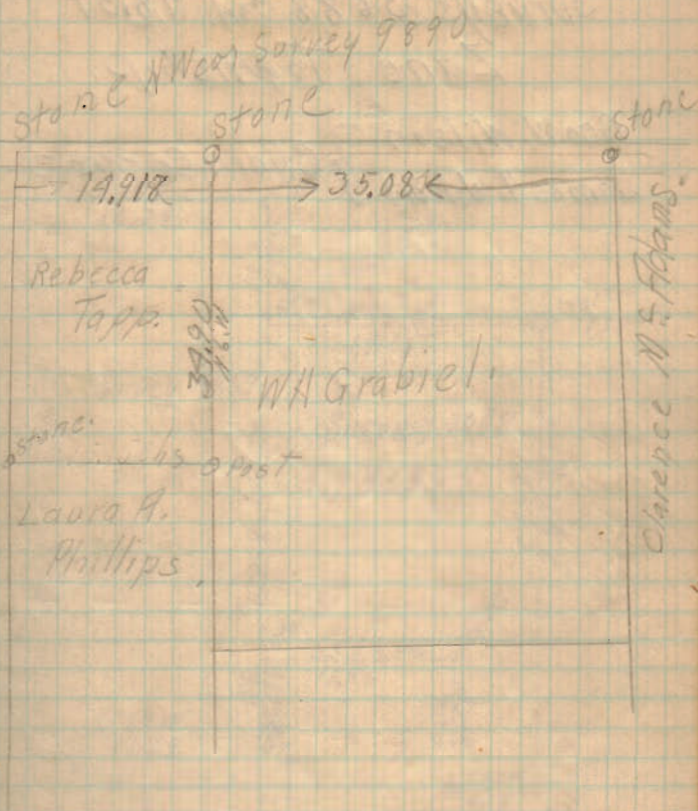


Survey W. N. Grabel.

In survey 9890. Rushcreek Tp.
September 7, 1911.

F. L. Williams }
I. B. Phillips } Chainmen.



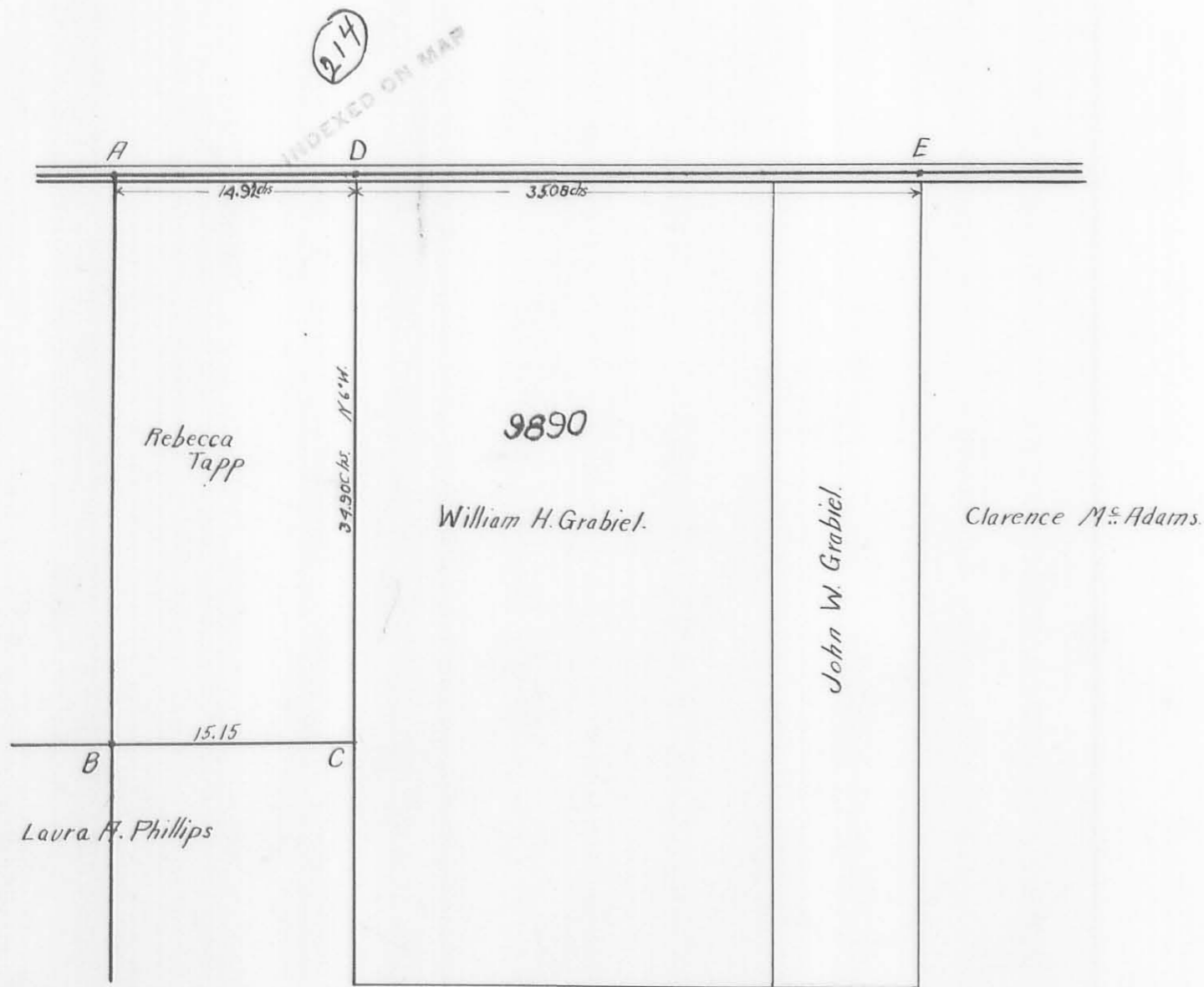
214

SURVEYED for

William H. Grabel.

In Survey 9890, Rushcreek, Tp.
September 7, 1911.

by Walter V. Scott.
Deputy County Surveyor.



Description of Corners.

- A, Stone northwest corner Survey 9890
- B, Stone.
- C, Post.
- D, Stone, set in shoulder of grade.
- E, Stone and Brick.

Line DC is line as agreed on by Ernest Tapp & William H. Grabel.