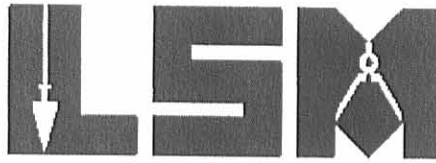


REC'D 7-17-07 SWM/OK

Lee Surveying and Mapping Co., Inc.

Land Surveys • Topography • Subdivisions • Construction Layout

117 N. Madriver St.
Bellefontaine OH 43311



Phone: (937) 593-7335
Fax: (937) 593-7444

BEVINGTON 2.647 ACRES

Lying in The Village of Ridgeway, Bokescreek Township, Logan County, Ohio.

Being out of the Derick A. Bevington 8.002 acre tract, all of Outlot 42 and part of Outlots 33, 34, and 41 (Plat Cabinet A, Slide 155), as deeded and described in Official Record 868, Page 57 of the Logan County Record of Deeds and being more particularly described as follows:

Commencing at a 1 inch iron bar found at the intersection of center-lines of County Highway 121 and East Street (33 feet wide).

THENCE, with the center-line of East Street, N 6°-54'-14"W, a distance of 1387.07 feet to a MAG nail found.

THENCE, S 83°-08'-46"W, a distance of 16.50 feet to a 5/8 inch iron rod found at THE TRUE POINT OF BEGINNING.

THENCE, with the north lines of Outlot 43 and 35 and the north line of the Charles Robinson 2.409 acre tract and 0.831 acre tract (O.R. 848, Pg. 890, Tracts 2, 3 and 4), S 83°-08'-46"W, a distance of 521.38 feet to a 5/8 inch iron rod found.

THENCE, with the east line of the John S. Moody and Deborah L. Moody 3.001 acre tract (O.R. 764, Pg. 777), N 6°-50'-53"W, a distance of 221.21 feet to a 5/8 inch iron rod set.

THENCE, N 83°-08'-46"E, a distance of 521.16 feet to 5/8 inch iron rod set.

THENCE, with the west right-of-way of East Street and the east lines of Outlots 41 and 42, S 6°-54'-14"E, a distance of 221.21 feet to the point of beginning.

Containing 2.647 acres.

The basis for bearings is the center-line of East Street, being S 6°-54'-14"E, and all other bearings are from angles and distances measured in a field survey by Lee Surveying and Mapping Co., Inc. on July 12, 2007.

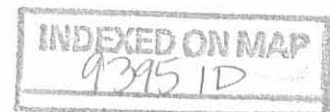


ORIGINAL STAMP IN GREEN

Description prepared by:

William K. Bruce

William K. Bruce
Professional Surveyor 7437
July 13, 2007



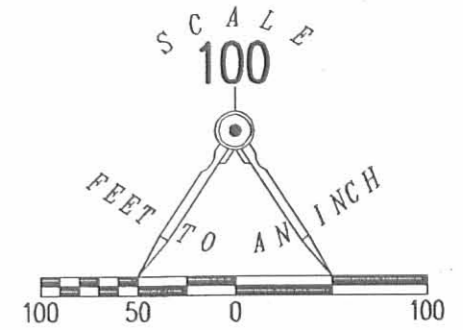
L-3325077

REC'D 7-17-07 S.M.A.C.



LEGEND

- 5/8 INCH IRON ROD SET
- 5/8 INCH IRON ROD FOUND
- ⊗ MAG NAIL FOUND
- 1 INCH IRON BAR FOUND



A SURVEY OF A 2.647 ACRE TRACT
 OUT OF THE DERICK A. BEVINGTON
 8.002 ACRE TRACT
 ALL OF OUTLOT 42, PART OF OUTLOTS
 33, 34, AND 41
 PLAT CABINET A, SLIDE 155
 OFFICIAL RECORD 868, PAGE 57
 VILLAGE OF RIDGEWAY
 BOKESCREEK TOWNSHIP
 LOGAN COUNTY, OHIO

SURVEYED BY:

William K. Bruce
 WILLIAM K. BRUCE

PROFESSIONAL SURVEYOR 7437
 JULY 12, 2007



ORIGINAL STAMP IN GREEN

COPYRIGHT 2007 BY:
 LEE SURVEYING & MAPPING CO., INC.
 117 North Modriver Street
 BELLEFONTAINE, OHIO 43311
 (937) 593-7335
 surveys@lsminc.us

ADW D0707 3325077 L-3325077-3

2 WORKING DAYS
BEFORE YOU DIG
 CALL TOLL FREE **800-362-2764**
 OHIO UTILITIES PROTECTION SERVICE

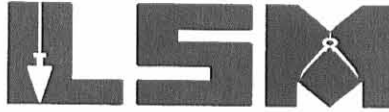
INDEXED ON MAP
 9395 1P

REV ID 311-02 SMM OK

Lee Surveying and Mapping Co., Inc.

Land Surveys • Topography • Subdivisions • Construction Layout

117 N. Madriver St.
Bellefontaine OH 43311



Phone: (937) 593-7335
Fax: (937) 593-7444

HAMILTON 1.737 ACRES

Lying in the Village of Ridgeway, Bokescreek Township, Logan County, Ohio.

Being out of Outlot 32 and Outlot 33 of the Village of Ridgeway as recorded in Plat Cabinet A, Slide 155 of the Logan County Records of Deeds and being more particularly described as follows:

Beginning at a 5/8 inch iron rod set on the northwest corner of Outlot 32 at the intersection of the south right-of-way of South Street (66 feet wide) and the east right-of-way of Ohio Route 292 (60 feet wide).

THENCE, with the south right-of-way of South Street, N 89°-10'-07" E, a distance of 204.00 feet to a 5/8 inch iron rod set.

THENCE, S 4°-53'-09" W, a distance of 344.61 feet to a 5/8 inch iron rod set.

THENCE, N 84°-44'-28" W, a distance of 251.96 feet to a 5/8 inch iron rod set.

THENCE, with the east right-of-way of Ohio Route 292, N 13°-31'-00" E, a distance of 326.34 feet to the point of beginning.

Containing 1.737 acres, of which 1.022 acres are out of Outlot 32 and 0.715 acre is out of Outlot 33.

The basis for bearings is the east right-of-way of Ohio Route 292, being N 13°-31'-00" E, and all other bearings are from angles and distances measured in a field survey by Lee Surveying and Mapping Co., Inc. on March 7, 2002

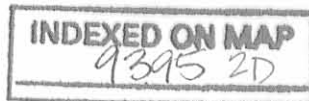
Description prepared by:

Jeffrey I. Lee
Professional Surveyor 6359
March 7, 2002



L-3325

ORIGINAL STAMP IN GREEN



REC'D 3-11-02 smj/ok

2 WORKING DAYS
BEFORE YOU DIG
CALL TOLL FREE 800-362-2764
OHIO UTILITIES PROTECTION SERVICE.

292
(60')

(BASIS FOR BEARINGS)
N 13° 31' 00" E
326.34'

MAIN STREET

HARDIN STREET

SOUTH STREET (66')

N 89° 10' 07" E
204.00'

1.737 ACRES

LOT 32

LOT 40

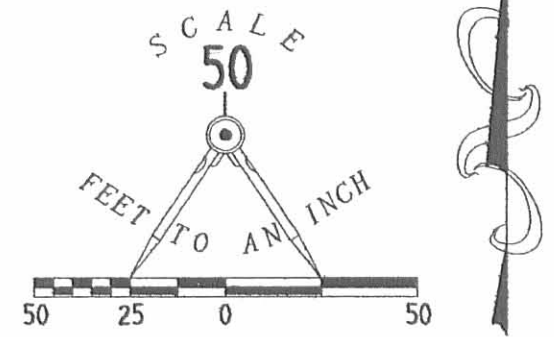
344.61'
S 04° 53' 09" W

(1.022 ACRES)
(0.715 ACRE)

LOT 33

LOT 41

251.96'
N 84° 44' 28" W



- LEGEND
- 5/8 INCH IRON ROD SET
 - 3/4 INCH IRON SQUARE BAR FOUND

**SURVEY OF 1.737 ACRES OUT OF
OUTLOTS 32 AND 33
IN THE VILLAGE OF RIDGEWAY
PLAT CABINET A, SLIDE 155
BOKESCREEK TOWNSHIP
LOGAN COUNTY, OHIO**



ORIGINAL STAMP IN GREEN

SURVEYED BY:
[Signature]
JEFFREY I. LEE
PROFESSIONAL SURVEYOR 6359
MARCH 7, 2002

COPYRIGHT 2002 BY:
LEE SURVEYING & MAPPING CO., INC.
117 North Madriver Street
BELLEFONTAINE, OHIO 43311
(937) 593-7335

D 401 L3325 L-3325-3 ✓

INDEXED ON MAP
9395 2P

Lee Surveying and Mapping Co., Inc.

Land Surveys • Topography • Subdivisions • Construction Layout

117 N. Madriver St.
Bellefontaine OH 43311



Phone: (937) 593-7335
Fax: (937) 593-7444

BEVINGTON 3.001 ACRES

Lying in the Village of Ridgeway, Bokescreek Township, Logan County, Ohio.

Being out of the Derick A. Bevington and Jamie L. Bevington 11.003 acre tract part of Outlots 33 and 34 in the Village of Ridgeway (Cabinet A, Slide 155) as deeded and described in Official Record 625, Page 942 of the Logan County Records of Deeds and being more particularly described as follows:

Beginning on a 5/8 inch iron rod found on the northwest corner of Outlot 32 at the intersection of the south right-of-way of South Street (66 feet wide) and the east right-of-way of Ohio Route 292 (60 feet wide).

THENCE, with the east right-of-way of Ohio Route 292 and the west line of the Karen K. Hamilton 1.737 acre tract (Official Record 601, Page 751), S 7°-30'-00"W, a distance of 326.34 feet to a 5/8 inch iron rod found at the TRUE POINT OF BEGINNING.

THENCE, with the lines of the said 1.737 acre tract, the following two courses:

N 89°-14'-32"E, a distance of 251.96 feet to a 5/8 inch iron rod found.

N 1°-07'-51"W, a distance of 125.35 feet to a 5/8 inch iron rod set.

THENCE, N 83°-09'-07"E, a distance of 126.20 feet to a 5/8 inch iron rod set.

THENCE, S 6°-50'-53"E, a distance of 412.03 feet to a 5/8 inch iron rod set.

THENCE, with the north line of the Charles Walter Robinson, etal 0.82 acre tract (O.R. 220, Pg. 561), S 83°-31'-49"W, a distance of 145.74 feet to a 5/8 inch iron rod set.

THENCE, with the north line of the Ronald W. Retterer 1 acre tract (O.R. 3, Pg. 909, Tract 1), N 81°-45'-00"W, a distance of 313.50 feet to a 5/8 inch iron rod set on the east right-of-way of Ohio Route 292.

THENCE, with the east right-of-way of Ohio Route 292, N 7°-30'-00"E, a distance of 238.86 feet to the point of beginning.

Containing 3.001 acres, of which 1.075 acres are out of Outlot 33 and 1.926 acres are out of Outlot 34.

The basis for bearings is the east right-of-way of Ohio Route 292, being N 7°-30'-00"E, and all other bearings are from angles and distances measured in a field survey by Lee Surveying and Mapping Co., Inc. on February 16, 2005

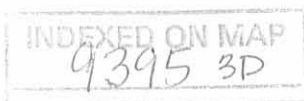


ORIGINAL STAMP IN GREEN

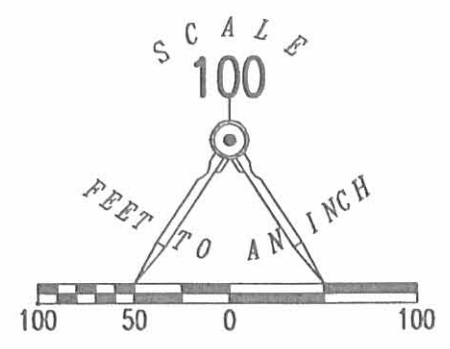
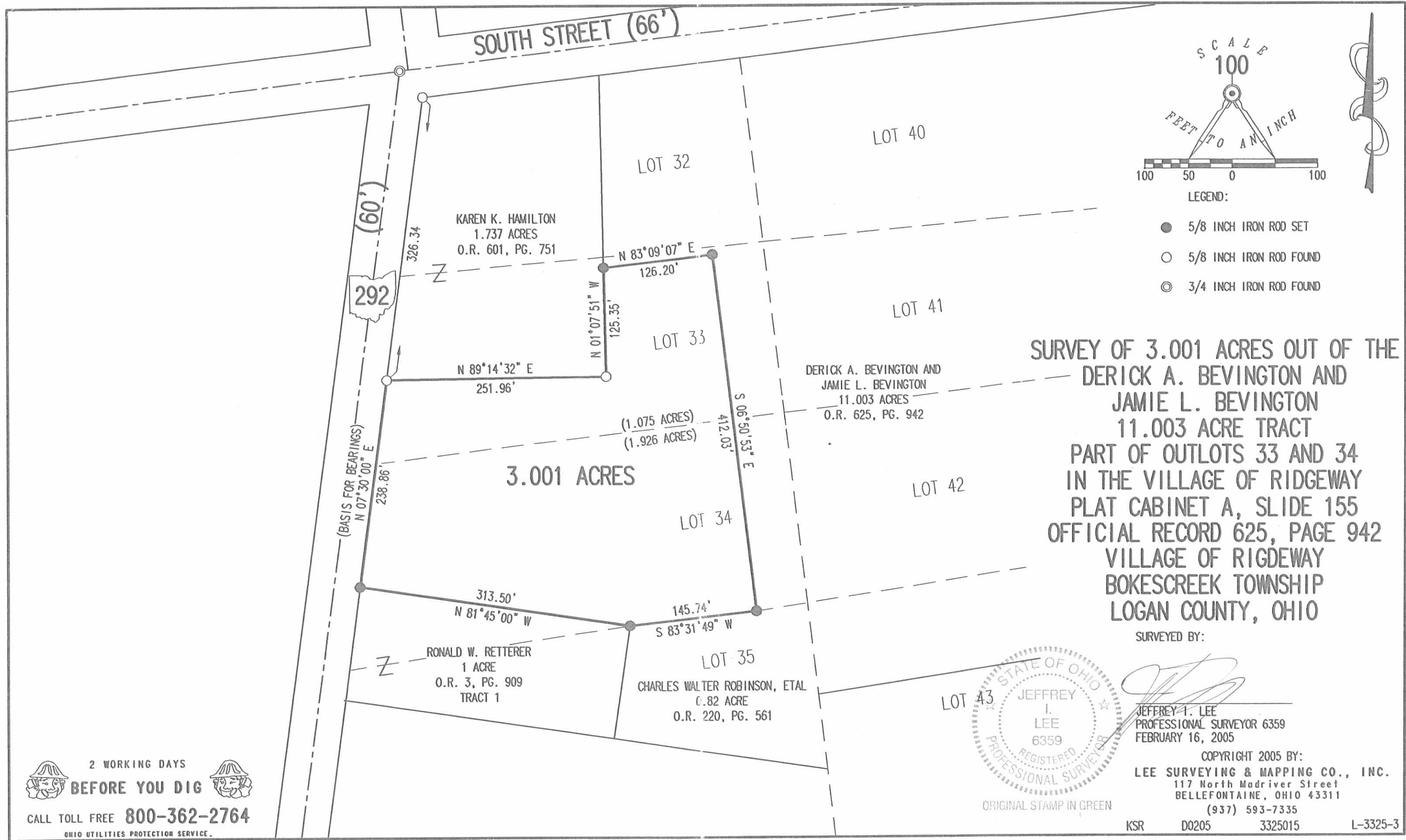
Description prepared by:

Jeffrey I. Lee
Jeffrey I. Lee
Professional Surveyor 6359
February 17, 2005

L-3325



REC'D 2-18-05 SAM OK



SURVEY OF 3.001 ACRES OUT OF THE
DERICK A. BEVINGTON AND
JAMIE L. BEVINGTON
11.003 ACRE TRACT
PART OF OUTLOTS 33 AND 34
IN THE VILLAGE OF RIDGEWAY
PLAT CABINET A, SLIDE 155
OFFICIAL RECORD 625, PAGE 942
VILLAGE OF RIDGEWAY
BOKESCREEK TOWNSHIP
LOGAN COUNTY, OHIO

SURVEYED BY:



Jeffrey I. Lee
JEFFREY I. LEE
PROFESSIONAL SURVEYOR 6359
FEBRUARY 16, 2005

COPYRIGHT 2005 BY:
LEE SURVEYING & MAPPING CO., INC.
117 North Madriver Street
BELLEFONTAINE, OHIO 43311
(937) 593-7335

ORIGINAL STAMP IN GREEN

KSR D0205 3325015 L-3325-3

2 WORKING DAYS
BEFORE YOU DIG
CALL TOLL FREE **800-362-2764**
OHIO UTILITIES PROTECTION SERVICE.

INDEXED ON MAP
9395 3P

12-10-15

Lee Surveying and Mapping Co., Inc.



Land Surveys • Topography • Subdivisions • Construction Layout

117 N. Madriver St.
Bellefontaine OH 43311



Phone: (937) 593-7335
Fax: (937) 593-7444
surveys@lsminc.us

BEVINGTON 3.646 ACRES

Lying in the Village of Ridgeway, Bokescreek Township, Logan County, Ohio.

Being out of the Derick A. Bevington 8.002 acre tract part of Outlots 32, 33, 40 & 41 in the Village of Ridgeway, (Plat Cabinet A, Slide 155) as deeded and described in Official Record 868, Pg. 57 of the Logan County Records of Deeds and being more particularly described as follows:

Commencing at a 5/8 inch iron rod found at the intersection of center-lines of South Street (66 feet wide) and East Street (33 feet wide)

THENCE, with the center-line of East Street, S 06°-54'-15"E, a distance of 183.66 feet to a MAG nail set.

THENCE, S 79°-49'-20"W, a distance of 16.53 feet to a 5/8 inch iron rod set at the TRUE POINT OF BEGINNING.

THENCE, with the west right-of-way of East Street, S 06°-54'-12"E, a distance of 260.76 feet to a 5/8 inch iron rod found.

THENCE, with the north line of the Natasha Newell 2.647 acre tract (O.R. 1191, Pg. 58), S 83°-08'-38"W, a distance of 521.13 feet to a 5/8 inch iron rod set.

THENCE, with the lines of the Bradley K. Carnes 3.001 acre tract (O.R. 1153 Pg. 611), the following two courses:

N 06°-49'-22"W, a distance of 194.32 feet to a 5/8 inch iron rod found.

S 83°-09'-12"W, a distance of 126.22 feet to a 5/8 inch iron rod found.

THENCE, with the east line of the Bryan N. Hamilton and Chasidee S. Hamilton 1.737 acre tract (O.R. 990, Pg. 672), N 01°-09'-14"W, a distance of 159.64 feet to a 5/8 inch iron rod set.

THENCE, with the center-line of a ditch the following four courses:

S 63°-30'-32"E, a distance of 135.79 feet to a 5/8 inch iron rod set.

N 82°-55'-59"E, a distance of 414.60 feet to a 5/8 inch iron rod set.

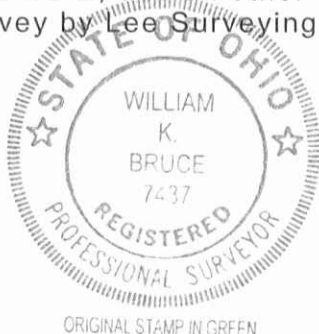
S 77°-00'-41"E, a distance of 64.19 feet to a 5/8 inch iron rod set.

N 79°-49'-20"E, a distance of 42.82 feet to the point of beginning.

Containing 3.646 acres

Property is subject to any and all previous easements and rights-of-way of record.

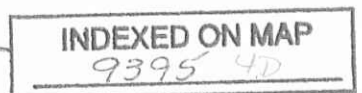
The basis for bearings is the center-line of East Street, being S 06°-54'-12"E, and all other bearings are from angles and distances measured in a field survey by Lee Surveying and Mapping Co., Inc. on December 4, 2015.



ORIGINAL STAMP IN GREEN

Description prepared by:

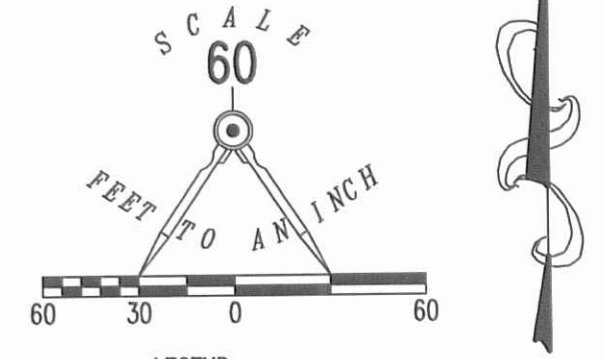
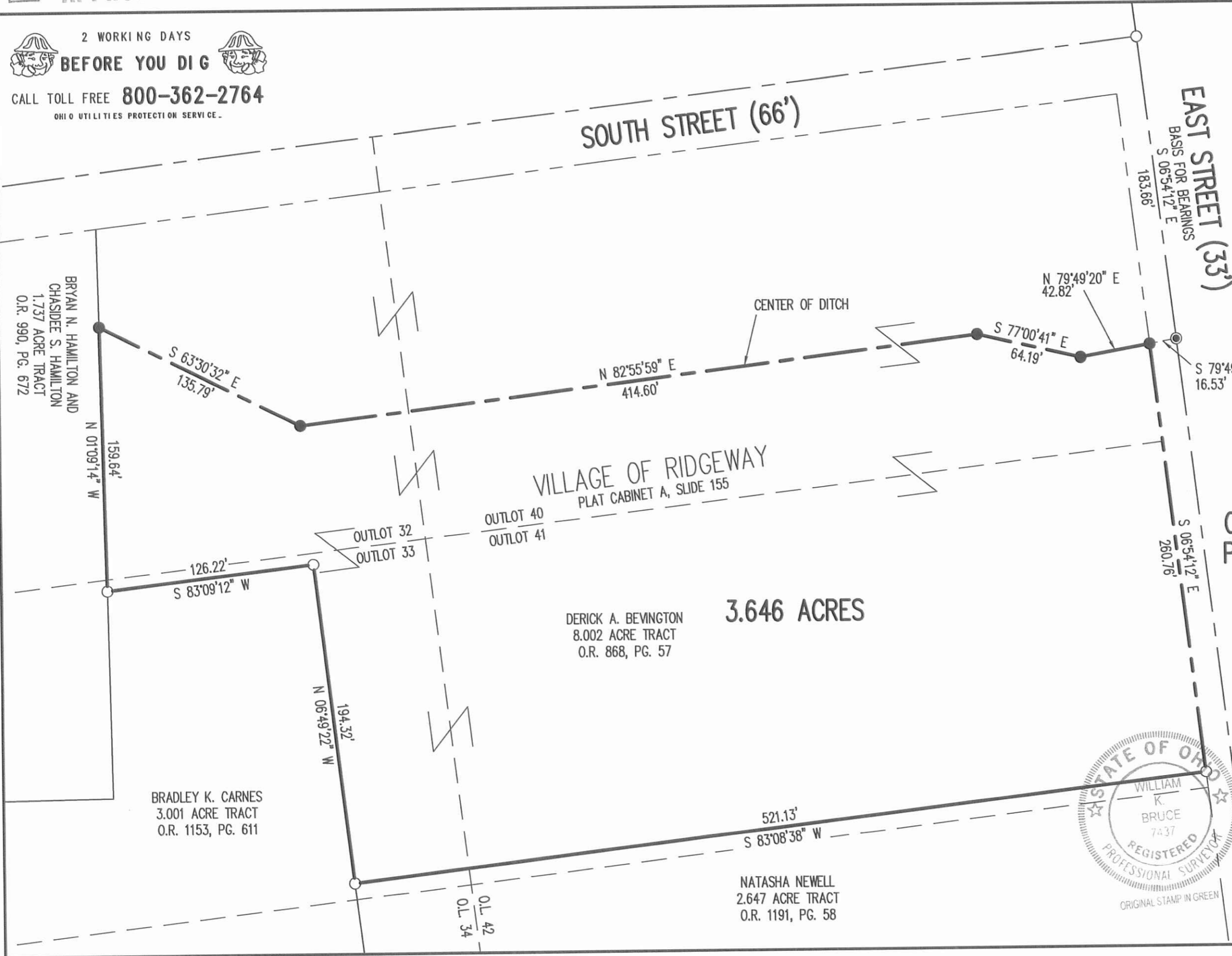
William K. Bruce
Professional Surveyor 7437
December 4, 2015



L-60331115

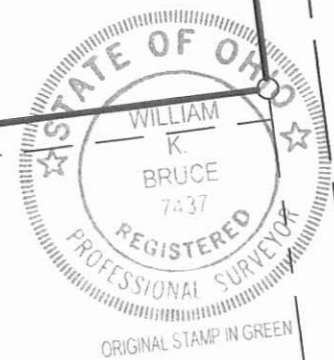
12-10-15
 **APPROVED**

2 WORKING DAYS
BEFORE YOU DIG
 CALL TOLL FREE **800-362-2764**
 OHIO UTILITIES PROTECTION SERVICE



A SURVEY OF A 3.646 ACRE TRACT OUT OF THE DERICK A. BEVINGTON 8.002 ACRE TRACT OFFICIAL RECORD 868, PAGE 57 PART OUTLOTS 32, 33, 40 & 41 VILLAGE OF RIDGEWAY PLAT CABINET A, SLIDE 155 BOKESCREEK TOWNSHIP LOGAN COUNTY, OHIO

SURVEYED BY:



William K. Bruce
 WILLIAM K. BRUCE
 PROFESSIONAL SURVEYOR 7437
 DECEMBER 4, 2015

COPYRIGHT 2015 BY:
LEE SURVEYING & MAPPING CO., INC.
 117 North Madriver Street
 BELLEFONTAINE, OHIO 43311
 (937) 593-7335
 WWW.LSMINC.US
 surveys@lsminc.us
 ADW D1115 60331115 L-6033-3

INDEXED ON MAP
 9395 4P