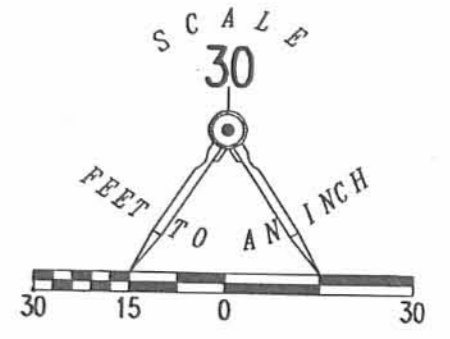
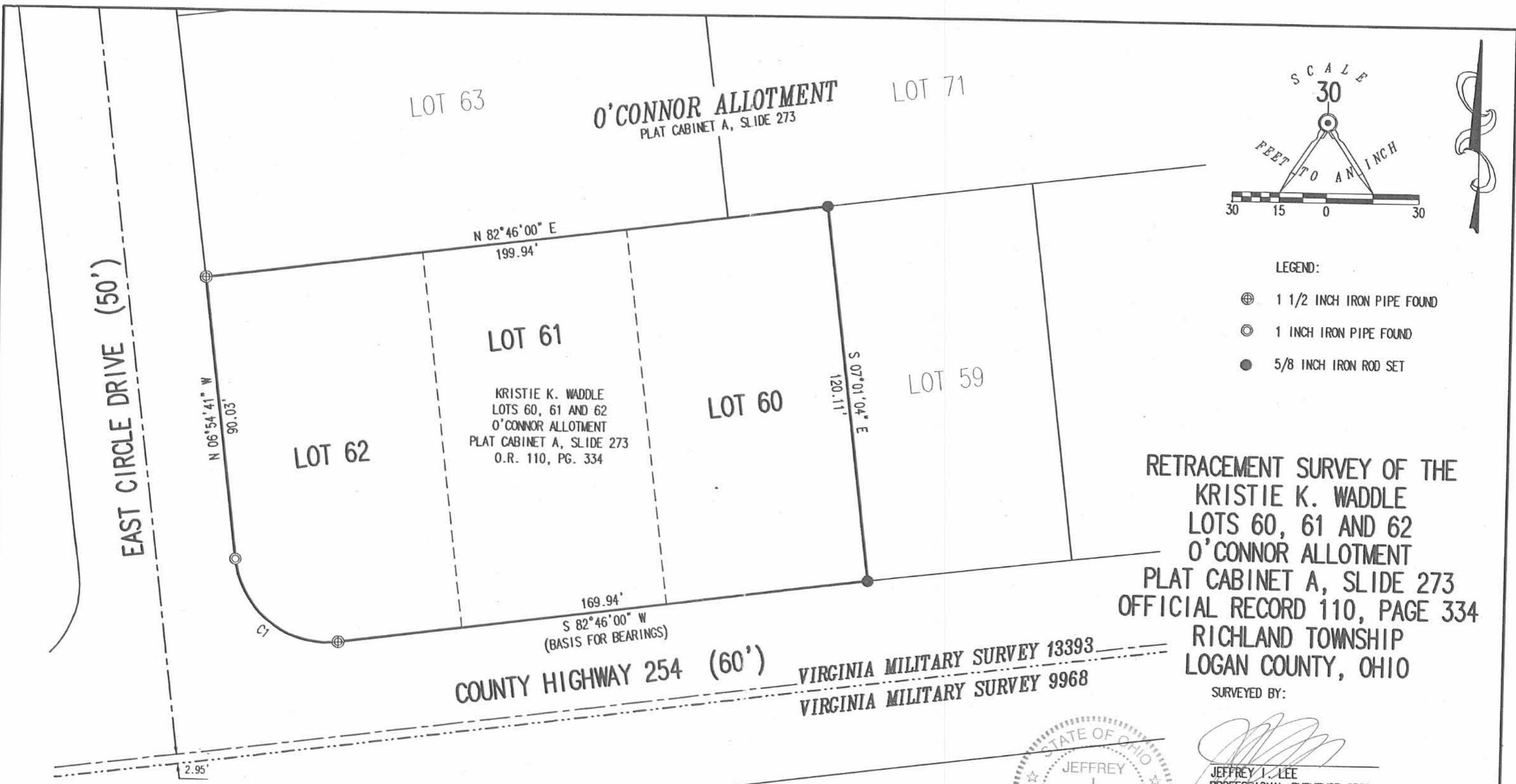


REC'D 1-14-05 SMM OK



- LEGEND:
- ⊕ 1 1/2 INCH IRON PIPE FOUND
 - ⊙ 1 INCH IRON PIPE FOUND
 - 5/8 INCH IRON ROD SET

RETRACEMENT SURVEY OF THE
 KRISTIE K. WADDLE
 LOTS 60, 61 AND 62
 O'CONNOR ALLOTMENT
 PLAT CABINET A, SLIDE 273
 OFFICIAL RECORD 110, PAGE 334
 RICHLAND TOWNSHIP
 LOGAN COUNTY, OHIO

SURVEYED BY:

Jeffrey I. Lee
 JEFFREY I. LEE
 PROFESSIONAL SURVEYOR 6359
 JANUARY 11, 2005
 REVISED JANUARY 13, 2005



COPYRIGHT 2005 BY:
 LEE SURVEYING & MAPPING CO., INC.
 117 North Madriver Street
 BELLEFONTAINE, OHIO 43311
 (937) 593-7335

KSR D0105 3960124 L-3960-3

COUNTY HIGHWAY 254 (60')
 VIRGINIA MILITARY SURVEY 13393
 VIRGINIA MILITARY SURVEY 9968

2 WORKING DAYS
BEFORE YOU DIG
 CALL TOLL FREE **800-362-2764**
 OHIO UTILITIES PROTECTION SERVICE.

CURVE	DELTA ANGLE	RADIUS	ARC LENGTH	CHORD BEARING	CHORD LENGTH
C1	90°15'55"	30.00'	47.26'	N 52°12'14" W	42.52'

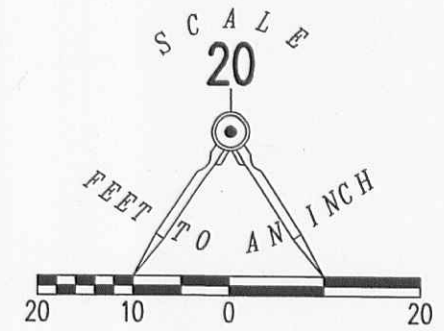
INDEXED ON MAP
 9502 1P

ORIGINAL STAMP IN GREEN

12-12-14

APPROVED

CURVE	DELTA ANGLE	RADIUS	ARC LENGTH	CHORD BEARING	CHORD LENGTH
C1	90°28'00"	30.00'	47.37'	N 51°55'26" W	42.60'



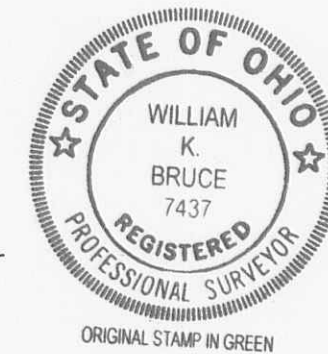
LEGEND:

- ⊙ 1 INCH IRON PIPE FOUND
- 5/8 INCH IRON ROD SET WITH PLASTIC I.D. CAP STAMPED "LSM 7437"

RETRACEMENT SURVEY OF
LOT 57
O'CONNOR ALLOTMENT
PLAT CABINET A, SLIDE 273
RICHLAND TOWNSHIP
LOGAN COUNTY, OHIO

SURVEYED BY:

William K. Bruce
WILLIAM K. BRUCE
PROFESSIONAL SURVEYOR 7437
DECEMBER 00, 2014



COPYRIGHT 2014 BY:
LEE SURVEYING & MAPPING CO., INC.
117 North Madriver Street
BELLEFONTAINE, OHIO 43311
(937) 593-7335
WWW.LSMINC.US
surveys@lsminc.us

KSS D1114 58431114 L-5843-3

COUNTY HIGHWAY 254 (60')

2 WORKING DAYS
BEFORE YOU DIG
CALL TOLL FREE 800-362-2764
OHIO UTILITIES PROTECTION SERVICE.

INDEXED ON MAP
9502 2P