

RECEIVED 9-1-99 DE JCH

Lee Surveying and Mapping Co., Inc.

Land Surveys • Topography • Subdivisions • Construction Layout

117 N. Madriver St.
Bellefontaine OH 43311



Phone: (937) 593-7335
Fax: (937) 593-7444

LAKE LANDS LONG ISLAND SHORE NO. 1 0.005 ACRES

Lying in Virginia Military Survey 13393, Richland Township, Logan County, Ohio.

Being State of Ohio Lake Lands north of Lot 1 of Long Island Shores No. 1 as platted in Plat Cabinet B, Slide 20B of the Logan County Records of Plats and being more particularly described as follows:

Beginning at a point at the northwest corner of Lot 1, referenced by a 5/8 inch iron rod found on the west line of Lot 1, S 27°-09'-40" W, a distance of 10.00 feet.

THENCE, with the west line of Lot 1 extended, N 27°-09'-40" E, a distance of 2.85 feet to a point on the concrete sea wall.

THENCE, with the face of the concrete sea wall, S 65°-58'-06" E, a distance of 77.79 feet to a 5/8 inch iron rod set.

THENCE, with the north line of Lot 1, the following three (3) courses:

N 84°-43'-35" W, a distance of 13.36 feet to a 5/8 inch iron rod set.

N 61°-07'-15" W, a distance of 30.48 feet to a point.

N 67°-48'-47" W, a distance of 34.94 feet to the point of beginning.

Containing 0.005 acres.

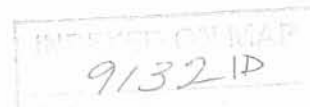
The basis for bearings is the west line of Lot 1, being N 27°-09'-40" E, and all other bearings are from angles and distances measured in a field survey by Lee Surveying and Mapping Co., Inc. on August 19, 1999.

Description prepared by:

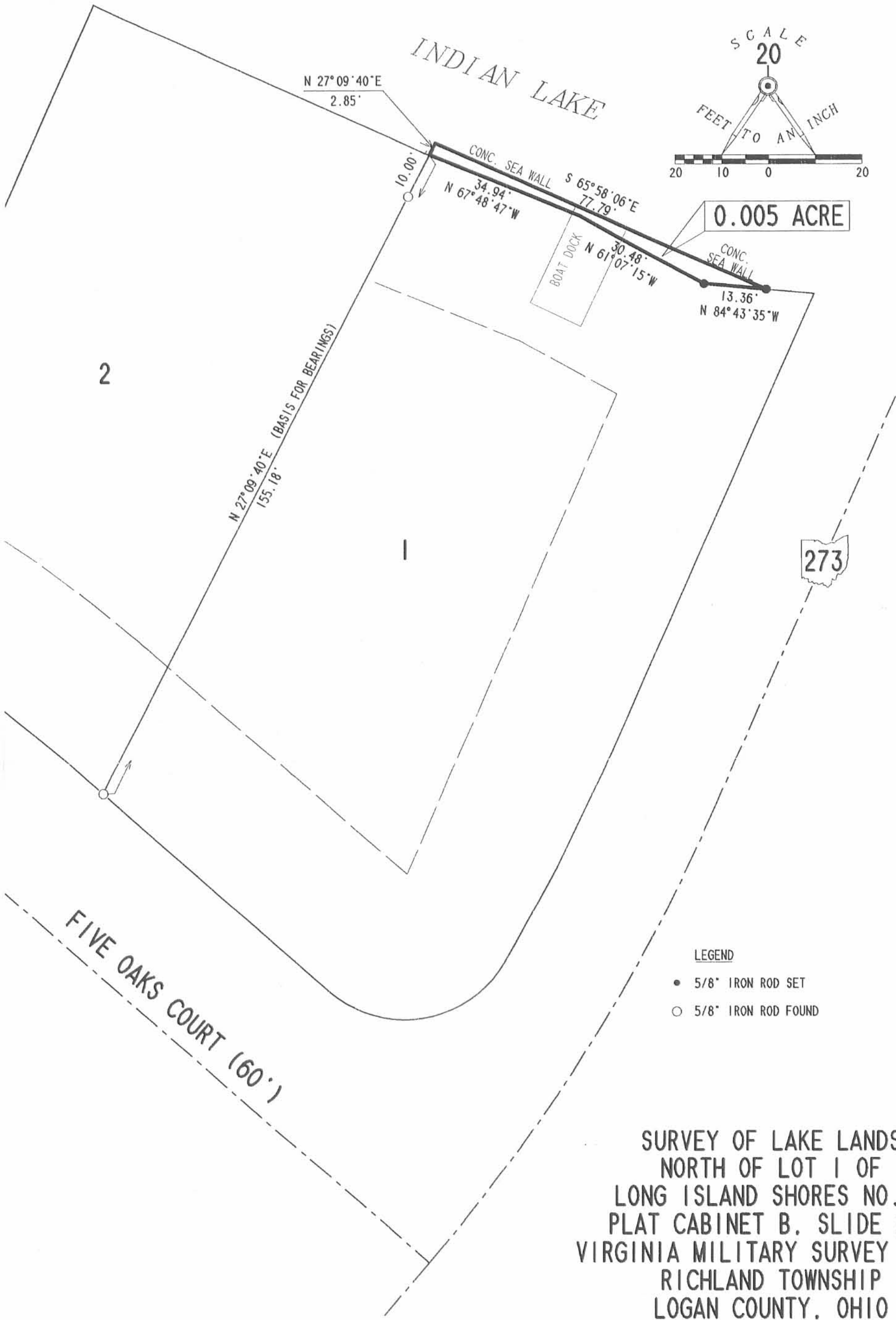
Jeffrey I. Lee
Professional Surveyor 6359
August 23, 1999



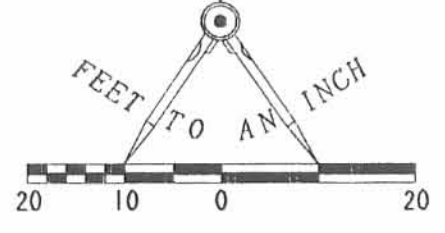
ORIGINAL STAMP IN GREEN



L-2447



SCALE
20



0.005 ACRE

LEGEND

- 5/8" IRON ROD SET
- 5/8" IRON ROD FOUND

SURVEY OF LAKE LANDS
NORTH OF LOT 1 OF
LONG ISLAND SHORES NO. 1
PLAT CABINET B. SLIDE 20B
VIRGINIA MILITARY SURVEY 13393
RICHLAND TOWNSHIP
LOGAN COUNTY, OHIO



ORIGINAL STAMP IN GREEN

SURVEYED BY:
[Signature]
JEFFREY I. LEE
PROFESSIONAL SURVEYOR 6359
AUGUST 19, 1999

COPYRIGHT 1999 BY:
LEE SURVEYING & MAPPING CO., INC.
117 North Madriver Street
BELLEFONTAINE, OHIO 43311
(937) 593-7335

2 WORKING DAYS
BEFORE YOU DIG
CALL TOLL FREE **800-362-2764**
OHIO UTILITIES PROTECTION SERVICE.

INDEXED ON MAP
9132 IP

REC'D 3-10-04 SUM 05

Lee Surveying and Mapping Co., Inc.

Land Surveys • Topography • Subdivisions • Construction Layout

117 N. Madriver St.
Bellefontaine OH 43311



Phone: (937) 593-7335
Fax: (937) 593-7444

PREMIER PROPERTIES 1.654 ACRES TRACT A

Lying in Virginia Military Survey 13393, Richland Township, Logan County, Ohio

Being out of the Premier Properties original 26.12 acre tract as deeded and described in Official Record 116, Page 978 of the Logan County Records of deeds and being more particularly described as follows:

Beginning at a railroad spike found at the intersection of center-lines of Ohio Route 273 (50 feet wide) and Wilderness Way Court (60 feet wide).

THENCE, with the center-line of Ohio Route 273, the following three courses:

With a curve to the right having a central angle of $19^{\circ}-00'-52''$, a radius of 358.18 feet, an arc length of 118.87 feet, a chord bearing $N 56^{\circ}-24'-57''E$, a distance of 118.32 feet to a MAG nail set.

With a curve to the right having a central angle of $3^{\circ}-11'-59''$, a radius of 358.18 feet, an arc length of 20.00 feet, a chord bearing $N 67^{\circ}-32'-29''E$, a distance of 20.00 feet to a PK nail found.

$N 69^{\circ}-07'-30''E$, a distance of 8.55 feet to a MAG nail set at the TRUE POINT OF BEGINNING.

THENCE, $N 26^{\circ}-07'-15''W$, a distance of 281.44 feet to a point, passing a 5/8 inch iron rod set at 25.11 feet and a 5/8 inch iron rod set at 266.44 feet.

THENCE, with the waters edge the following eight courses:

$N 45^{\circ}-36'-25''E$, a distance of 31.11 feet to a point.

$N 30^{\circ}-46'-53''E$, a distance of 35.58 feet to a point, referenced by a 5/8 inch iron rod set
 $N 85^{\circ}-59'-19''E$, a distance of 15.00 feet.

$N 37^{\circ}-37'-47''E$, a distance of 54.29 feet to a point.

$N 65^{\circ}-41'-44''E$, a distance of 38.10 feet to a point.

$S 75^{\circ}-55'-43''E$, a distance of 23.81 feet to a point, referenced by a 5/8 inch iron rod set
 $S 50^{\circ}-51'-11''W$, a distance of 15.00 feet.

$S 81^{\circ}-25'-21''E$, a distance of 36.94 feet to a point.

$S 70^{\circ}-49'-28''E$, a distance of 42.56 feet to a point.

$S 45^{\circ}-07'-27''E$, a distance of 52.20 feet to a point.

INDEXED ON MAP
9132.2D-1

Lee Surveying and Mapping Co., Inc.

Land Surveys • Topography • Subdivisions • Construction Layout

117 N. Madriver St.
Bellefontaine OH 43311



Phone: (937) 593-7335
Fax: (937) 593-7444

THENCE, S 17°-26'-46"E, a distance of 239.04 feet to a MAG nail set, passing a 5/8 inch iron rod set at 10.00 feet and a 5/8 inch iron rod set at 214.09 feet.

THENCE, with the center-line of Ohio Route 273, S 69°-07'-30"W, a distance of 206.45 feet to the point of beginning.

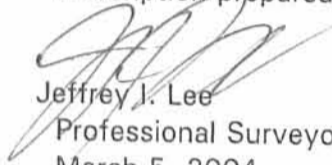
Containing 1.654 acres of which 0.120 acre is within the highway right-of-way.

The basis for bearings is the center-line of Ohio Route 273, south of the curve at Wilderness Way, being S 23°-36'-55"W, and all other bearings are from angles and distances measured in a field survey by Lee Surveying and Mapping Co., Inc. on December 22, 2003, Revised March 5, 2004.



ORIGINAL STAMP IN GREEN

Description prepared by:


Jeffrey I. Lee
Professional Surveyor 6359
March 5, 2004

L-2447

INDEXED ON MAP
9132 2D-2

REC'D 3-10-04 SMY 04

Lee Surveying and Mapping Co., Inc.

Land Surveys • Topography • Subdivisions • Construction Layout

117 N. Madriver St.
Bellefontaine OH 43311



Phone: (937) 593-7335
Fax: (937) 593-7444

PREMIER PROPERTIES 1.768 ACRES TRACT B

Lying in Virginia Military Survey 13393, Richland Township, Logan County, Ohio

Being out of the Premier Properties original 26.12 acre tract as deeded and described in Official Record 116, Page 978 of the Logan County Records of deeds and being more particularly described as follows:

Beginning at a railroad spike found at the intersection of center-lines of Ohio Route 273 (50 feet wide) and Wilderness Way Court (60 feet wide).

THENCE, with the center-line of Ohio Route 273, with a curve to the left having a central angle of $21^{\circ}-41'-45''$, a radius of 358.18 feet, an arc length of 135.63 feet, with a chord bearing $S 36^{\circ}-03'-53''W$, a distance of 134.82 feet to a MAG nail set.

THENCE, $N 31^{\circ}-37'-55''W$, a distance of 308.50 feet to a point on the waters edge, passing a $5/8$ inch iron rod set at 29.45 feet and a $5/8$ inch iron rod set at 293.50 feet.

THENCE, with the waters edge the following five courses:

$N 59^{\circ}-02'-06''E$, a distance of 58.87 feet to a point, referenced by a $5/8$ inch iron rod set
 $S 55^{\circ}-13'-54''E$, a distance of 15.00 feet.

$N 48^{\circ}-23'-12''E$, a distance of 65.83 feet to a point.

$N 64^{\circ}-22'-16''E$, a distance of 49.27 feet to a point, referenced by a $5/8$ inch iron rod set
 $S 33^{\circ}-24'-18''E$, a distance of 15.00 feet.

$N 54^{\circ}-55'-07''E$, a distance of 71.96 feet to a point.

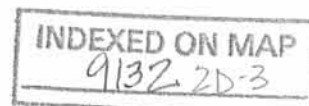
$N 45^{\circ}-36'-25''E$, a distance of 55.00 feet to a point.

THENCE, $S 26^{\circ}-07'-15''E$, a distance of 281.44 feet to a MAG nail set, passing a $5/8$ inch iron rod set at 15.00 feet and a $5/8$ inch iron rod set at 256.33 feet.

THENCE, with the center-line of Ohio Route 273, the following three courses:

$S 69^{\circ}-07'-30''W$, a distance of 8.55 feet to a PK nail found.

With a curve to the left with a central angle of $3^{\circ}-11'-59''$, a radius of 358.18 feet, an arc length of 20.00 feet, a chord bearing $S 67^{\circ}-32'-29''W$, a distance of 20.00 feet to a MAG nail set.



Lee Surveying and Mapping Co., Inc.

Land Surveys • Topography • Subdivisions • Construction Layout

117 N. Madriver St.
Bellefontaine OH 43311



Phone: (937) 593-7335
Fax: (937) 593-7444

With a curve to the left with a central angle of $19^{\circ}-00'-52''$, a radius of 358.18 feet, an arc length of 118.87 feet, a chord bearing of $S\ 56^{\circ}-24'-57''W$, a distance of 118.32 feet to the point of beginning.

Containing 1.768 acres of which 0.163 acre is within the highway right-of-way.

The basis for bearings is the center-line of Ohio Route 273, south of the curve at Wilderness Way, being $S\ 23^{\circ}-36'-55''W$, and all other bearings are from angles and distances measured in a field survey by Lee Surveying and Mapping Co., Inc. on December 22, 2003, Revised March 5, 2004.

Description prepared by:

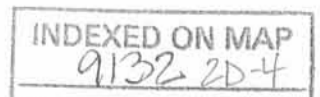


ORIGINAL STAMP IN GREEN

A handwritten signature in black ink, appearing to read 'J. Lee'.

Jeffrey I. Lee
Professional Surveyor 6359
March 5, 2004

L-2447



REV'D 2-2-04 SMM/ak

Lee Surveying and Mapping Co., Inc.

Land Surveys • Topography • Subdivisions • Construction Layout

117 N. Madriver St.
Bellefontaine OH 43311



Phone: (937) 593-7335
Fax: (937) 593-7444

PREMIER PROPERTIES 1.451 ACRES TRACT C

Lying in Virginia Military Survey 13393, Richland Township, Logan County, Ohio

Being out of the Premier Properties original 26.12 acre tract as deeded and described in Official Record 116, Page 978 of the Logan County Records of deeds and being more particularly described as the following:

Beginning at a railroad spike found at the intersection of center-lines of Ohio Route 273 (50 feet wide) and Wilderness Way Court (60 feet wide).

THENCE, with the center-line of Ohio Route 273, with a curve to the left having a central angle of $21^{\circ}-41'-45''$, a radius of 358.18 feet, an arc length of 135.63 feet, with a chord bearing $S 36^{\circ}-03'-53''W$, a distance of 134.82 feet to a MAG nail set at THE TRUE POINT OF BEGINNING.

THENCE, with the center-line of Ohio Route 273, with a curve to the left having a central angle of $1^{\circ}-35'-59''$, a radius of 358.18 feet, an arc length of 10.00 feet, with a chord bearing $S 24^{\circ}-23'-35''W$, a distance of 10.00 feet to a railroad spike found.

THENCE, continuing with the center-line of Ohio Route 273, $S 23^{\circ}-36'-55''W$, a distance of 152.29 feet to a MAG nail set.

THENCE, $N 66^{\circ}-23'-05''W$, a distance of 40.61 feet to a point, passing a 5/8 inch iron rod set at 25.05 feet.

THENCE, with the waters edge the following fourteen courses:

$N 8^{\circ}-55'-17''W$, a distance of 44.75 feet to a point.

$N 3^{\circ}-30'-13''E$, a distance of 52.04 feet to a point.

$N 14^{\circ}-46'-27''W$, a distance of 38.23 feet to a point.

$N 31^{\circ}-30'-23''W$, a distance of 28.97 feet to a point, referenced by a 5/8 inch iron rod set
 $N 42^{\circ}-54'-05''E$, a distance of 15.00 feet.

$N 59^{\circ}-10'-34''W$, a distance of 50.59 feet to a point.

$N 80^{\circ}-11'-36''W$, a distance of 50.32 feet to a point.

$S 72^{\circ}-40'-09''W$, a distance of 82.88 feet to a point, referenced by a 5/8 inch iron set
 $N 12^{\circ}-45'-56''W$, a distance of 15.00 feet.

$N 79^{\circ}-05'-32''W$, a distance of 24.31 feet to a point.

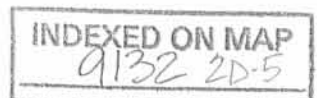
$N 46^{\circ}-06'-35''W$, a distance of 46.00 feet to a point.

$N 7^{\circ}-40'-43''E$, a distance of 79.70 feet to a point.

$N 19^{\circ}-46'-58''E$, a distance of 25.41 feet to a point, referenced by a 5/8 inch iron rod set
 $S 60^{\circ}-04'-24''E$, a distance of 15.00 feet.

$N 58^{\circ}-38'-58''E$, a distance of 80.30 feet to a point.

$N 68^{\circ}-56'-19''E$, a distance of 100.06 feet to a point.



Lee Surveying and Mapping Co., Inc.

Land Surveys • Topography • Subdivisions • Construction Layout

117 N. Madriver St.
Bellefontaine OH 43311



Phone: (937) 593-7335
Fax: (937) 593-7444

N 59°-02'-06"E, a distance of 20.00 feet to a point.

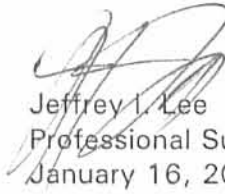
THENCE, S 31°-37'-55"E, a distance of 308.50 feet to the point of beginning, passing a 5/8 inch iron rod set at 15.00 feet and a 5/8 inch iron rod set at 279.05 feet.

Containing 1.451 acres of which 0.098 acre is within the highway right-of-way.

The basis for bearings is the center-line of Ohio Route 273, south of the curve at Wilderness Way, being S 23°-36'-55"W, and all other bearings are from angles and distances measured in a field survey by Lee Surveying and Mapping Co., Inc. on December 22, 2003.

Description prepared by:




Jeffrey I. Lee
Professional Surveyor 6359
January 16, 2004

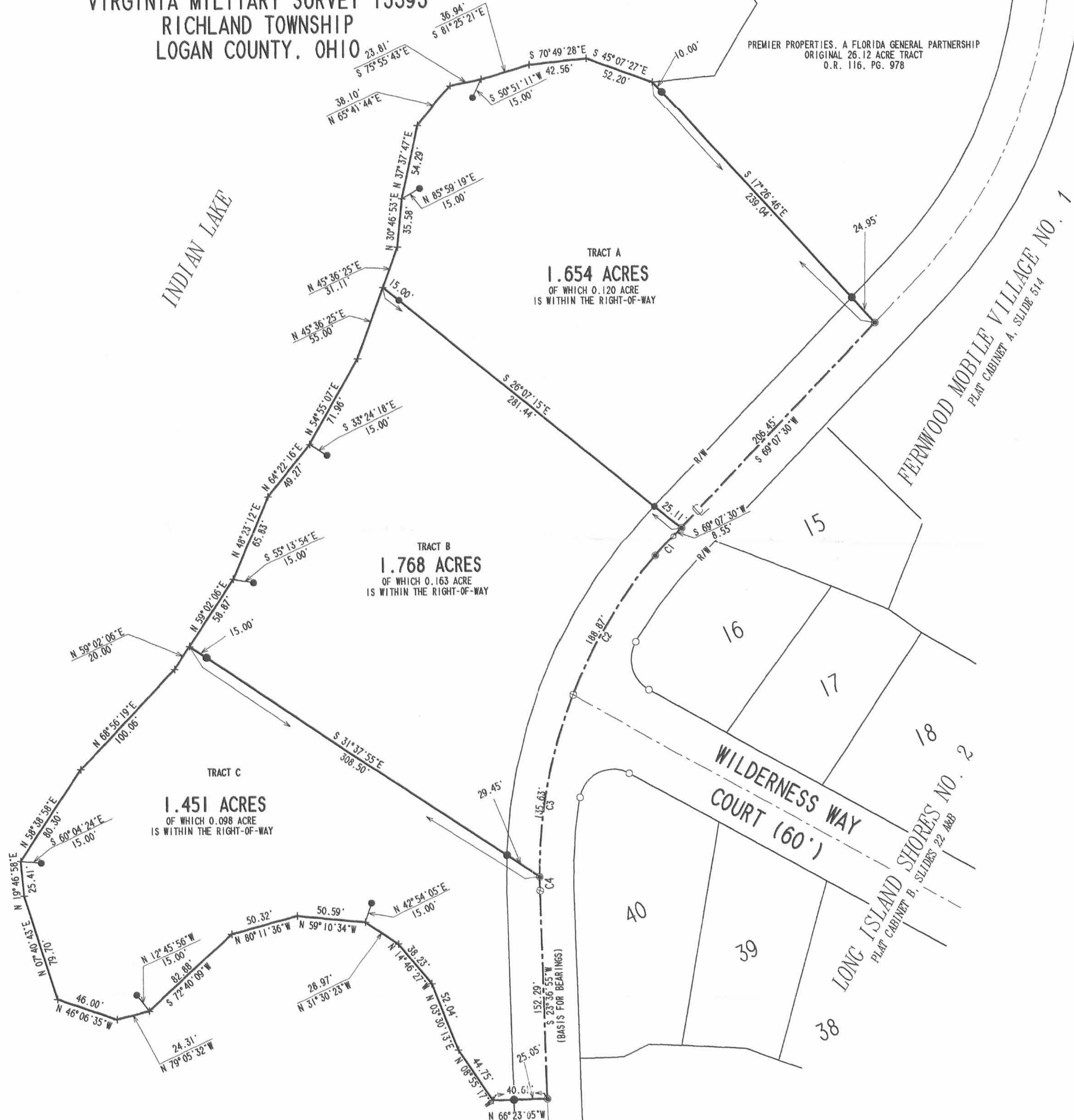
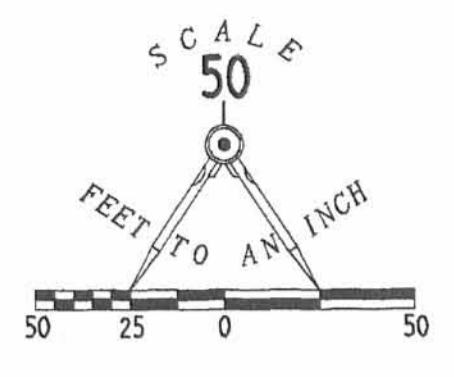
L-2447

INDEXED ON MAP
9132206

CURVE	DELTA ANGLE	RADIUS	ARC	TANGENT	CHORD	CHORD BEARING
C 1	03°11'59"	358.18'	20.00'	10.00'	20.00'	S 67°32'29"W
C 2	19°00'52"	358.18'	118.87'	59.98'	118.32'	S 56°24'57"W
C 3	21°41'45"	358.18'	135.63'	68.64'	134.82'	S 36°03'53"W
C 4	01°35'59"	358.18'	10.00'	5.00'	10.00'	S 24°23'35"W

A SURVEY OF 3 TRACTS OUT OF THE PREMIER PROPERTIES, A FLORIDA GENERAL PARTNERSHIP ORIGINAL 26.12 ACRE TRACT OFFICIAL RECORD 116, PAGE 978 VIRGINIA MILITARY SURVEY 13393 RICHLAND TOWNSHIP LOGAN COUNTY, OHIO

- LEGEND**
- MAG NAIL SET
 - ⊗ P.K. NAIL FOUND
 - ⊗ RAILROAD SPIKE FOUND
 - 5/8 INCH IRON FOUND
 - 5/8 INCH IRON SET



SURVEYED BY:
 JEFFREY I. LEE
 PROFESSIONAL SURVEYOR 6359
 DECEMBER 22, 2003
 REVISED MARCH 5, 2004

COPYRIGHT 2004 BY:
LEE SURVEYING & MAPPING CO., INC.
 117 North Madriver Street
 BELLEFONTAINE, OHIO 43311
 (937) 593-7335
 KSR D412 2447034 L-2447-2

2 WORKING DAYS
BEFORE YOU DIG
 CALL TOLL FREE **800-362-2764**
 OHIO UTILITIES PROTECTION SERVICE.

INDEXED ON MAP
 9132 2D

273

(150')



Lee Surveying and Mapping Co., Inc.



Farm Surveys • Lot Surveys • Topography • Subdivisions • Construction Layout

117 NORTH MADRIVER STREET
BELLEFONTAINE, OHIO 43311

(937) 593-7335
FAX (937) 593-7444

PREMIER PROPERTIES 4.992 ACRES

Lying in Virginia Military Survey 13393, Richland Township, Logan County, Ohio.

Being out of the Premier Properties original 26.12 acre tract as deeded in Official Record 116, Page 978 of the Logan County Records of Deeds and described as: "Survey Number Sixteen (16) as designated in a turn of survey of State Lands in and around the Lewistown Reservoir commenced April 6th, 1875, by M.R. McCormick, surveyor which said return of survey is now filed in the office of the Auditor of State and described as Scott Island, being part of V.M.S. 13393 and containing thirty-six and 50/100 acres, subject to the flowage of the Lewistown Reservoir as now constructed excepting therefrom all that tract or parcel of land known and designated on the recorded plat of the Recorder's Office of Logan County, Ohio, as Fern Wood Subdivision on Long Island (formerly Scott Island), said tract herein conveyed containing approximately twenty-six and 12/100 acres." The subject parcel being more particularly described as follows:

Beginning at a railroad spike set on the center-line of Ohio Route 273 (50 feet wide) at the intersection of the said center-line and the easterly line of Lot 206 of Fernwood Number Five extended.

THENCE, with the said east line of Lot 206 extended and the east line of Lot 206, N 19°-02'-30" W, a distance of 89.00 feet to a point on the shore of Indian Lake, passing 1/2 inch square iron bars found at 24.91 feet and 63.85 feet and a 3/4 inch iron rod set at 76.64 feet.

THENCE, with the shore line of Indian Lake the following thirty-three (33) courses:

N 74°-21'-10" E, a distance of 14.48 feet to a point

N 57°-48'-38" E, a distance of 29.01 feet to a point

N 52°-16'-12" E, a distance of 51.17 feet to a point

N 42°-44'-02" E, a distance of 19.68 feet to a point referenced by a 5/8 inch iron rod set
S 69°-09'-33" E, a distance of 10.00 feet.

N 30°-40'-48" E, a distance of 20.19 feet to a point

N 19°-30'-16" E, a distance of 20.85 feet to a point

N 6°-01'-14" E, a distance of 29.91 feet to a point referenced by a 5/8 inch iron rod set
S 72°-11'-42" E, a distance of 10.00 feet.

N 8°-04'-05" E, a distance of 70.46 feet to a point referenced by a 5/8 inch iron rod set
S 85°-17'-48" E, a distance of 10.00 feet.

N 3°-35'-34" W, a distance of 19.00 feet to a point

N 14°-30'-17" E, a distance of 22.46 feet to a point

N 9°-47'-28" W, a distance of 24.52 feet to a point

N 8°-44'-10" W, a distance of 10.57 feet to a point referenced by a 5/8 inch iron rod set

N 88°-00'-06" E, a distance of 10.00 feet.

N 60°-54'-43" W, a distance of 56.09 feet to a point

N 10°-41'-51" W, a distance of 34.93 feet to a point

N 16°-42'-06" E, a distance of 18.40 feet to a point

N 12°-13'-27" W, a distance of 18.99 feet to a point

N 35°-32'-24" E, a distance of 35.10 feet to a point

N 47°-22'-56" E, a distance of 34.54 feet to a point referenced by a 3/4 inch iron rod set

S 50°-15'-34" E, a distance of 4.35 feet.

INDEXED ON MAP
9132 3D-1

N 67°-24'-02" E, a distance of 22.36 feet to a point
N 78°-48'-50" E, a distance of 56.13 feet to a point
N 73°-07'-12" E, a distance of 84.53 feet to a point referenced by a 5/8 inch iron rod set
S 11°-43'-05" E, a distance of 10.00 feet.

N 56°-39'-17" E, a distance of 18.28 feet to a point
N 85°-17'-16" E, a distance of 42.56 feet to a point
S 75°-33'-18" E, a distance of 29.04 feet to a point

S 53°-31'-41" E, a distance of 27.51 feet to a point
S 70°-32'-39" E, a distance of 26.00 feet to a point referenced by a 5/8 inch iron rod set
S 18°-11'-01" W, a distance of 10.00 feet.
S 63°-36'-31" E, a distance of 41.68 feet to a point

N 49°-07'-30" E, a distance of 10.85 feet to a point
S 67°-06'-30" E, a distance of 44.03 feet to a point referenced by a 5/8 inch iron rod set
S 23°-47'-05" W, a distance of 10.00 feet.
S 65°-38'-22" E, a distance of 79.97 feet to a point referenced by a 5/8 inch iron rod set
S 27°-09'-40" W, a distance of 10.00 feet.

S 67°-48'-47" E, a distance of 34.94 feet to a point
S 61°-07'-15" E, a distance of 30.48 feet to a point
S 84°-43'-35" E, a distance of 23.78 feet to a 5/8 inch iron rod set.

THENCE, S 66°-22'-30" E, a distance of 25.00 feet to a railroad spike set on the center-line of Ohio Route 273.

THENCE, with the center-line of Ohio Route 273 the following three courses:

S 23°-36'-55" W, a distance of 111.65 feet to a railroad spike set.

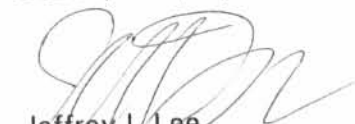
With a curve to the right having a central angle of 47°-43'-05", a radius of 382.11 feet, an arc length of 318.23 feet, and having a chord bearing S 47°-28'-28" W, a distance of 309.12 feet to a pony spike found.

THENCE, S 71°-20'-00" W, a distance of 385.12 feet to the point of beginning.

Containing 217446 square feet or 4.992 acres of which 0.461 acre is within the right-of-way of Ohio Route 273.

The basis for bearings is the center-line of Ohio Route 273 at the intersection with the easterly line of aforementioned Lot 206 being S 71°-20'-00" W, and all other bearings are from angles and distances measured in a field survey by Lee Surveying and Mapping Co., Inc. on September 23, 1996.

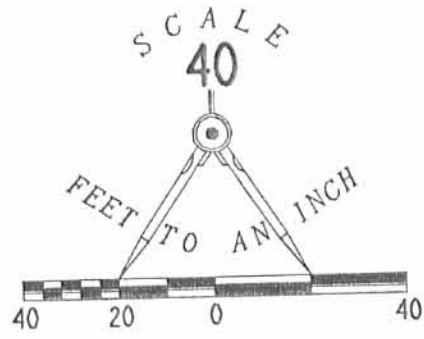
Description prepared by:


Jeffrey I. Lee
Professional Surveyor 6359
April 2, 1997



INDEXED ON MAP
91323D-2

ORIGINAL STAMP IN GREEN



INDIAN LAKE

INDIAN LAKE

273

4.992 ACRES
OF WHICH 0.461 ACRE
IS WITHIN THE HIGHWAY
RIGHT-OF-WAY

CURVE	DELTA ANGLE	RADIUS	ARC	TANGENT	CHORD	CHORD BEARING
CI	47° 43' 05"	382.11'	318.23'	169.00'	309.12'	S 47° 28' 28" W

- LEGEND**
- 3/4" IRON ROD SET
 - ⊗ PONY SPIKE FOUND
 - ⊕ CONCRETE RIGHT-OF-WAY MONUMENT FOUND
 - 1/2" SQUARE IRON BAR FOUND
 - ⊙ 5/8 IRON ROD SET
 - ⊙ RAILROAD SPIKE SET
 - ⊙ MAG NAIL FOUND

FERNWOOD NO. 5
PLAT CAB. A. SLIDE 385
LOT 206

LONG ISLAND ROAD (50')

385.12'
S 71° 20' 00" W (BASIS FOR BEARINGS)

SURVEY OF 4.992 ACRES OUT OF THE
PREMIER PROPERTIES ORIGINAL 26.12 ACRE TRACT
OFFICIAL RECORD 116, PAGE 978
VIRGINIA MILITARY SURVEY 13393
RICHLAND TOWNSHIP
LOGAN COUNTY, OHIO



SURVEYED BY:
[Signature]
JEFFREY I. LEE
PROFESSIONAL SURVEYOR 6359
SEPTEMBER 23, 1996
MAP REVISED JUNE 24, 1997

COPYRIGHT 1997 BY:
LEE SURVEYING & MAPPING CO., INC.
117 North Madriver Street
BELLEFONTAINE, OHIO 43311
(937) 593-7335

2 WORKING DAYS
BEFORE YOU DIG
CALL TOLL FREE 800-362-2764
OHIO UTILITIES PROTECTION SERVICE.

ORIGINAL STAMP IN GREEN

D313 LONGBND2 L-2447-2

INDEXED ON MAP
9132 3P

REC'D 10-10-99 SMJ OK ✓

Lee Surveying and Mapping Co., Inc.

Land Surveys • Topography • Subdivisions • Construction Layout

117 N. Madriver St.
Bellefontaine OH 43311



Phone: (937) 593-7335
Fax: (937) 593-7444

LOT 13
LONG ISLAND SHORES NO. 1
9.463 SQUARE FEET

Lying in Virginia Military Survey 13393, Richland Township, Logan County, Ohio.

Being out of Lot 13 of Long Island Shores No. 1 as platted in Plat Cabinet B, Slide 20B of the Logan County Records of Plats and being more particularly described as follows:

Beginning at a point on the southwest corner of Lot 8, referenced by a 5/8 inch iron rod found on the south line of Lot 8, S 72°-11'-42" E, a distance of 10.00 feet.

THENCE, with the south line of Lot 8 S 72°-11'-42" E, a distance of 10.00 feet to a 5/8 inch iron rod found.

THENCE, N 83°-20'-31" W, a distance of 9.79 feet to a point on the west line of Lot 13.

THENCE, with the west line of Lot 13, N 6°-01'-14" E, a distance of 1.93 feet to the point of beginning.

Containing 9.463 square feet.

The basis for bearings is the west line of Lot 8, being S 8°-04'-05" W, and all other bearings are from angles and distances measured in a field survey by Lee Surveying and Mapping Co., Inc. on August 19, 1999.



ORIGINAL STAMP IN GREEN

Description prepared by:

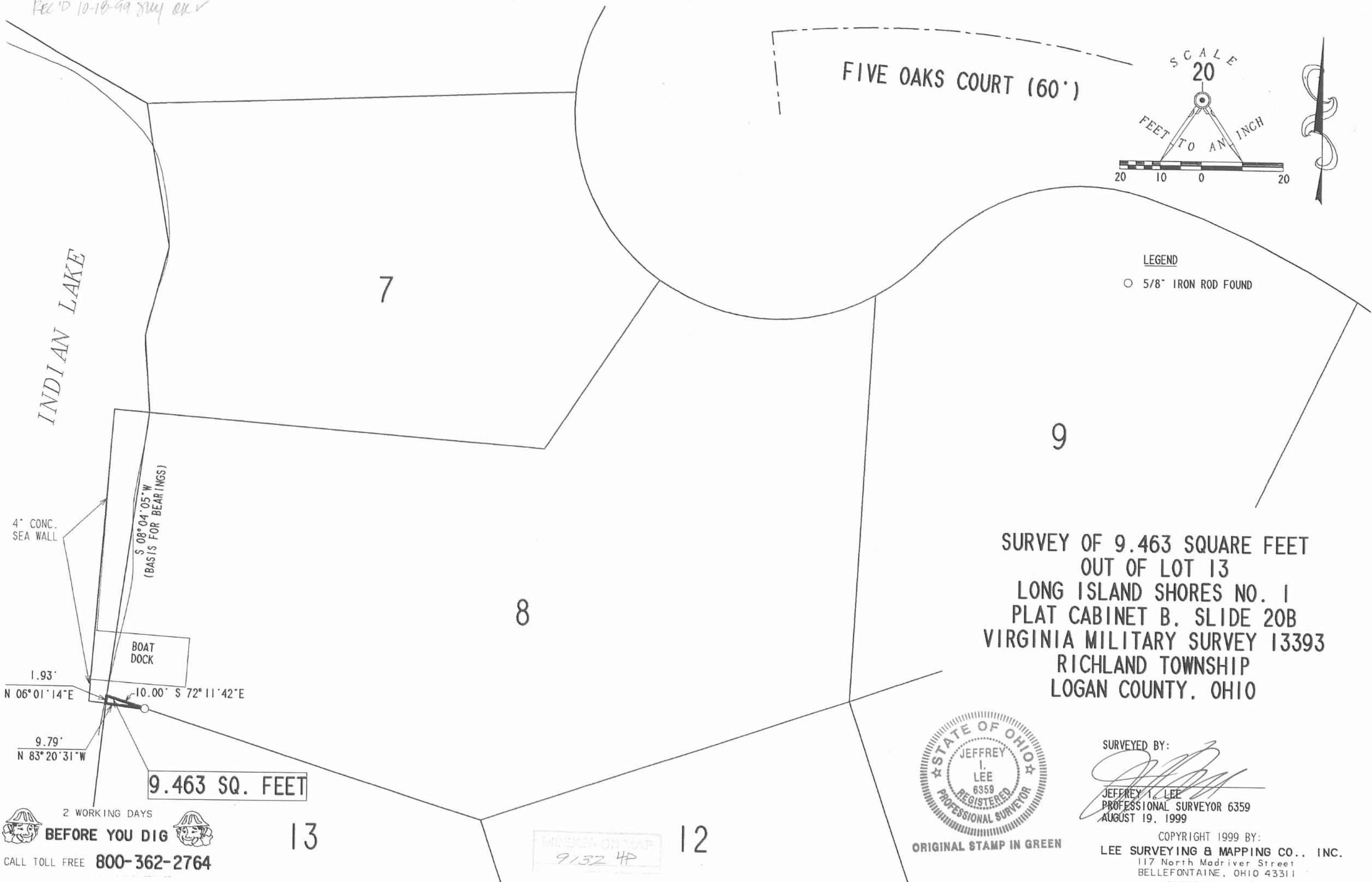
A handwritten signature in black ink, appearing to read 'Jeffrey I. Lee'.

Jeffrey I. Lee
Professional Surveyor 6359
August 23, 1999

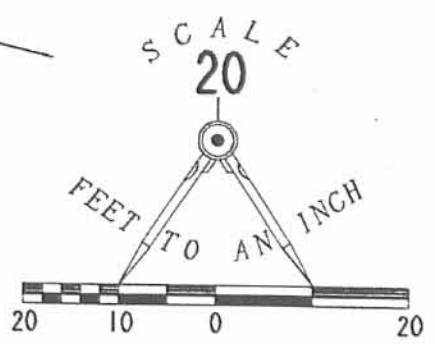
L-2447



REC'D 10-18-99 JMY EK V



FIVE OAKS COURT (60')



LEGEND

○ 5/8" IRON ROD FOUND

INDIAN LAKE

7

9

8

SURVEY OF 9.463 SQUARE FEET
OUT OF LOT 13
LONG ISLAND SHORES NO. 1
PLAT CABINET B. SLIDE 20B
VIRGINIA MILITARY SURVEY 13393
RICHLAND TOWNSHIP
LOGAN COUNTY, OHIO

4" CONC.
SEA WALL

S 08°04'05"W
(BASIS FOR BEARINGS)

BOAT
DOCK

1.93'
N 06°01'14"E

10.00' S 72°11'42"E

9.79'
N 83°20'31"W

9.463 SQ. FEET

2 WORKING DAYS
BEFORE YOU DIG
CALL TOLL FREE 800-362-2764

13

INDEXED ON MAP
9132 4P

12



ORIGINAL STAMP IN GREEN

SURVEYED BY:
[Signature]
JEFFREY I. LEE
PROFESSIONAL SURVEYOR 6359
AUGUST 19, 1999

COPYRIGHT 1999 BY:
LEE SURVEYING & MAPPING CO., INC.
117 North Madriver Street
BELLEFONTAINE, OHIO 43311
(937) 593-7335

REC'D 10-18-99 SWAY OK ✓

Lee Surveying and Mapping Co., Inc.

Land Surveys • Topography • Subdivisions • Construction Layout

117 N. Madriver St.
Bellefontaine OH 43311



Phone: (937) 593-7335
Fax: (937) 593-7444

LAKE LANDS LONG ISLAND SHORES NO. 1 0.011 ACRE

Lying in Virginia Military Survey 13393, Richland Township, Logan County, Ohio.

Being State of Ohio Lake Lands west of Lot 8 and part of Lot 13 of Long Island Shores No. 1 as platted in Plat Cabinet B, Slide 20B of the Logan County Records of Plats and being more particularly described as follows:

Beginning at a point on the northwest corner of Lot 8, referenced by a 5/8 inch iron rod found on the north line of Lot 8, S 85°-17'-48" E, a distance of 10.00 feet.

THENCE, with the west line of Lot 8, S 8°-04'-05" W, a distance of 70.46 feet to a point on the southwest corner of Lot 8, referenced by a 5/8 inch iron rod found at S 72°-11'-42" E, a distance of 10.00 feet.

THENCE, with the west line of Lot 13, S 6°-01'-14" W, a distance of 1.93 feet to a point.

THENCE, N 83°-20'-31" W, a distance of 4.23 feet to a point on the face of the concrete sea wall.

THENCE, with the face of the concrete sea wall, N 3°-53'-16" E, a distance of 5.40 feet to a point at a corner of a boat dock.

THENCE, with the sea wall extended and the concrete sea wall, N 4°-27'-20" E, a distance of 66.73 feet to a point at the corner of the sea wall.

THENCE, S 85°-17'-48" E, a distance of 8.78 feet to the point of beginning.

Containing 0.011 acres.

The basis for bearings is the west line of Lot 8, being S 8°-04'-05" W, and all other bearings are from angles and distances measured in a field survey by Lee Surveying and Mapping Co., Inc. on August 19, 1999.

Description prepared by:



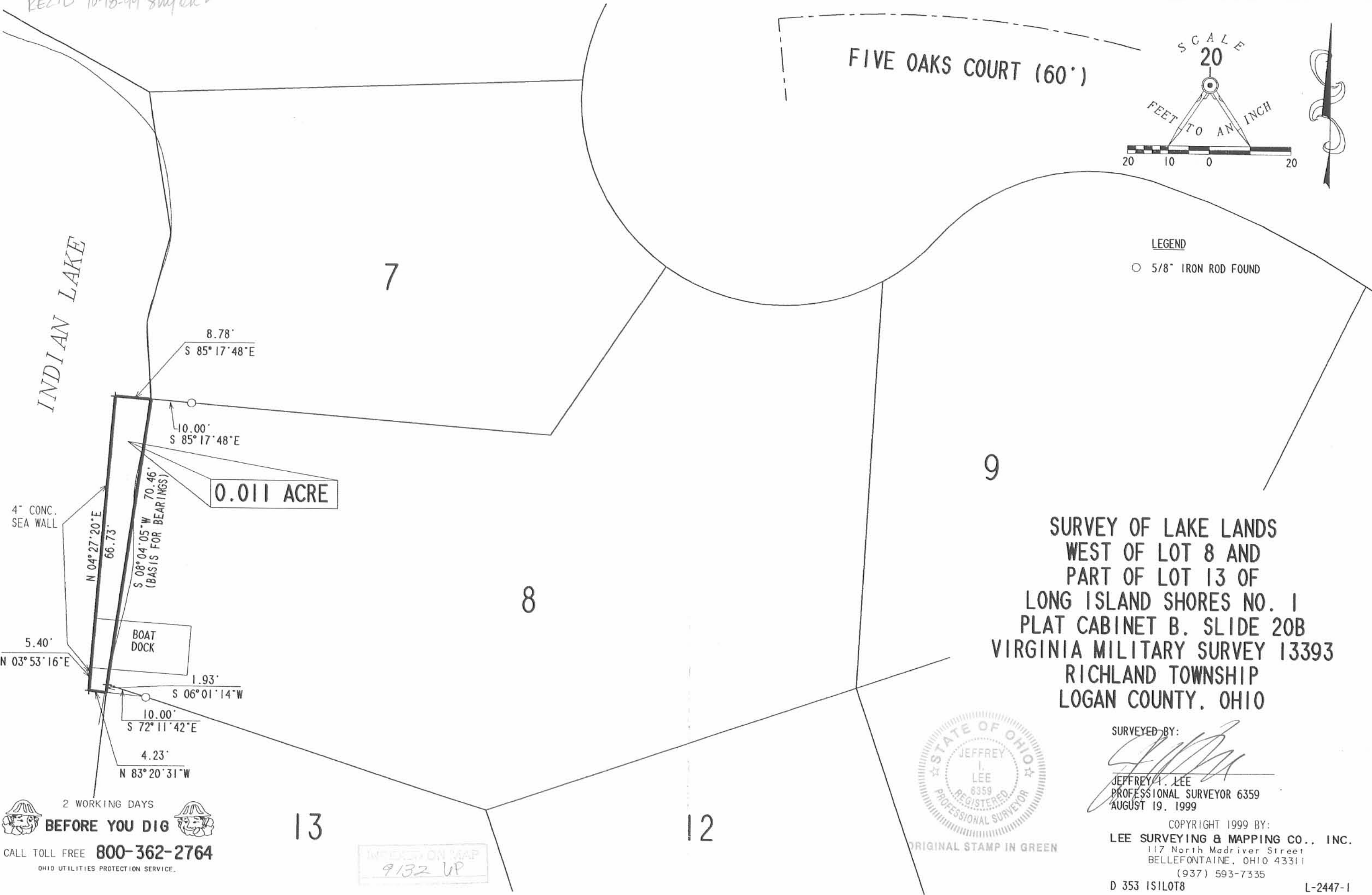
ORIGINAL STAMP IN GREEN

Jeffrey I. Lee
Jeffrey I. Lee
Professional Surveyor 6359
August 23, 1999

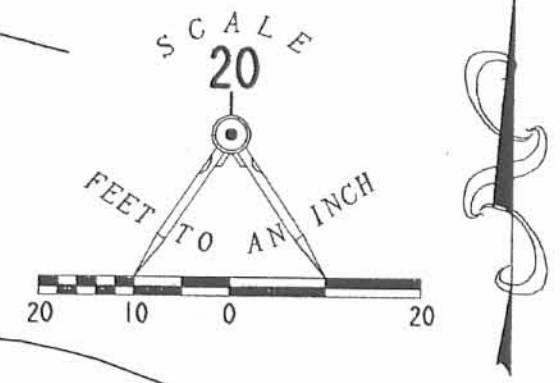
L-2447

INDEXED
9132 UD

REC'D 10-18-99 smy ek ✓



FIVE OAKS COURT (60')



LEGEND

○ 5/8" IRON ROD FOUND

0.011 ACRE

**SURVEY OF LAKE LANDS
 WEST OF LOT 8 AND
 PART OF LOT 13 OF
 LONG ISLAND SHORES NO. 1
 PLAT CABINET B. SLIDE 20B
 VIRGINIA MILITARY SURVEY 13393
 RICHLAND TOWNSHIP
 LOGAN COUNTY, OHIO**



ORIGINAL STAMP IN GREEN

SURVEYED BY:

Jeffrey I. Lee
 JEFFREY I. LEE
 PROFESSIONAL SURVEYOR 6359
 AUGUST 19, 1999

COPYRIGHT 1999 BY:

LEE SURVEYING & MAPPING CO., INC.
 117 North Madriver Street
 BELLEFONTAINE, OHIO 43311
 (937) 593-7335

D 353 1S1LOT8

L-2447-1

2 WORKING DAYS
BEFORE YOU DIG
 CALL TOLL FREE **800-362-2764**
 OHIO UTILITIES PROTECTION SERVICE.

13

12

INDEXED ON MAP
 9/32 UP

REC'D 2-4-99 smy

NOTES:

1. THIS IS NOT A BOUNDARY SURVEY PURSUANT TO CHAPTER 4733-37 OF THE OHIO ADMINISTRATIVE CODE.
2. LOT DIMENSIONS ARE FROM PLAT
3. THE AREA SHOWN IS IN FLOOD ZONE "C" PER THE FLOOD INSURANCE RATE MAP COMMUNITY-PANEL NUMBER 390772 0025 C DATED: MAY 15, 1985. THE 100 YEAR FLOOD ELEVATION FOR INDIAN LAKE IS 998.00 FEET PER A LETTER FROM FEMA DATED 9/21/86



INDIAN LAKE

**FLOOD PLANE
ELEVATION SURVEY OF
LOT 1 OF THE
LONG ISLAND SHORES SUBDIVISIONS NO. 1
VIRGINIA MILITARY SURVEY 13393
RICHLAND TOWNSHIP
LOGAN COUNTY, OHIO**

3

2

1

4" CONCRETE WALL

BOAT DOCK

1 STORY
WOOD FRAME HOUSE
BLOCK FOUNDATION
CRAWL SPACE

1000.33 - FINISH FLOOR

FUTURE GARAGE

FUTURE PORCH

BLOCK FOUNDATION ONLY

273

FIVE OAKS COURT (60')



ORIGINAL STAMP IN GREEN
SURVEYED BY:

Jeffrey I. Lee
JEFFREY I. LEE
PROFESSIONAL SURVEYOR 6359
FEBRUARY 1, 1999

COPYRIGHT 1999 BY:
LEE SURVEYING & MAPPING CO., INC.
117 North Madriver Street
BELLEFONTAINE, OHIO 43311
(937) 593-7335

2 WORKING DAYS
BEFORE YOU DIG
CALL TOLL FREE **800-362-2764**
OHIO UTILITIES PROTECTION SERVICE.

9132 7P

Received 5/18/04 OK JMB

MAY. -18' 04 (TUE) 09:57

BACON AND ASSOC

TEL: 419 999 2523

P. 002/002

Bacon & Associates

750 N. Eastown Road

Engineering and Surveying
Phone: (419) 999-3756
FAX: (419) 999-2523

Elida, Ohio 45807

Easement

Being an easement for pedestrian ingress/egress purposes across the west portion of Lot No. 14 of Long Island Shores No. 1 as recorded in Plat Cabinet "B", Slide 20B of the Logan County Recorder's office, located in VMS 13393, Richland Township, Logan County, Ohio, for the exclusive use of the owners of Lot Nos. 11 and 12 of this addition, more particularly described as follows:

Commencing for reference at an existing #4 rebar at the southwest corner of Lot No. 14;

Thence N.71°-17'-54"E. (assumed bearing), 5.00' to the intersection of the west line of said easement with the north right-of-way line of S.R. 273 (Long Island Rd.), being the point of beginning of the ingress/egress easement;

Thence N.19°-02'-30"W. parallel with the west property line, 63.73' to a point the north line of Lot 14:

Thence N.74°-21'-10"E. on said north line, 9.47' to a point;

Thence N.57°-48'-38"E. on the north line of Lot 14, 20.07' to a point;

Thence S.19°-02'-30"E., 12.07' to a point;

Thence S.69°-23'-59"W., 25.01' to a point;

Thence S.19°-02'-30"E., 55.01' to a point on the north right-of-way line of S.R. 273 (Long Island Road);

Thence S.71°-17'-54"W. on said north right-of-way, 4.00' to the POINT OF BEGINNING.

The above-described parcel contains 496.13 square feet (0.011 acre), more or less, subject to all legal highways and easements of record at the time of survey.

The above legal description prepared under the direct supervision of Clayton T. Bacon, PS 6179 on May 15, 2004.

The above-described easement is encumbered upon Lot No. 14, for the exclusive use of the Owners of Lot Nos. 11 and 12 of this Addition, and their heirs and assigns, forever.

INDEXED ON MAP
9132 8D

Clayton T. Bacon
5-18-04

