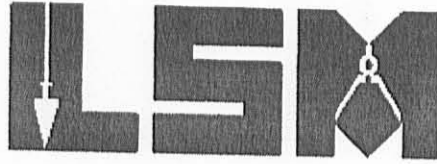


REV'D 12-23-09 SMJ/ck

# Lee Surveying and Mapping Co., Inc.

Land Surveys • Topography • Subdivisions • Construction Layout

117 N. Madriver St.  
Bellefontaine OH 43311



Phone: (937) 593-7335  
Fax: (937) 593-7444  
surveys@lsmcinc.us

## O'CONNOR FARMS, INC. 4.881 ACRES

Lying in Virginia Military Survey 13393, Richland Township, Logan County, Ohio.

Being out of the O'Connor Farms, Inc., 62.40 acre tract as deeded and described in Volume 353, Page 663, Tract I of the Logan County Records of Deeds and being more particularly described as follows:

Commencing on a stone found in a monument box at the southeast corner of Virginia Military Survey 13393 on the center-line of County Highway 38.

THENCE, with the east line of Virginia Military Survey 13393, the east line of the Longview Cove Group LLC, 1.184 acre tract (O.R. 970, Pg. 191, Tract I) and the west line of the Longview Cove Group LLC, 2.007 acre tract (O.R. 970, Pg. 191, Tract III), N 06°-57'-56"W, a distance of 259.96 feet to a 5/8 inch iron rod found at the TRUE POINT OF BEGINNING.

THENCE, with the lines of the said 1.184 acre tract, the following two courses:

S 81°-56'-05"W, a distance of 187.28 feet to a 5/8 inch iron rod found.

S 01°-30'-14"E, a distance of 13.09 feet to a 5/8 inch iron rod set.

THENCE, S 81°-56'-05"W, a distance of 7.03 feet to a 5/8 inch iron rod set.

THENCE, N 08°-03'-55"W, a distance of 82.75 feet to a 5/8 inch iron rod set.

THENCE, with a curve to the left, having a central angle of 125°-12'-44", a radius of 196.00 feet, an arc length of 428.33 feet, a chord bearing N 08°-13'-35"W, a distance of 348.04 feet to a 5/8 inch iron rod set.

THENCE, with a curve to the right, having a central angle of 62°-51'-35", a radius of 104.00 feet, an arc length of 114.10 feet, a chord bearing N 39°-24'-10"W, a distance of 108.46 feet to a 5/8 inch iron rod set.

THENCE, N 07°-58'-22"W, a distance of 265.92 feet to a 5/8 inch iron rod set.

THENCE, with a curve to the right, having a central angle of 32°-35'-13", a radius of 104.00 feet, an arc length of 59.15 feet, a chord bearing N 08°-19'-14"E, a distance of 58.36 feet to a 5/8 inch iron rod set.

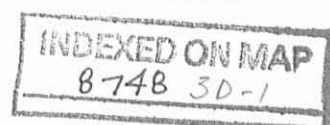
THENCE, with a curve to the left, having a central angle of 79°-55'-24", a radius of 196.00 feet, an arc length of 273.41 feet, a chord bearing N 15°-20'-51"W, a distance of 251.77 feet to a 5/8 inch iron rod set on the State Line.

THENCE, with the State Line, the following two courses:

S 89°-53'-40"E, a distance of 47.65 feet to a 5/8 inch iron rod set.

S 77°-34'-01"E, a distance of 242.49 feet to a 5/8 inch iron rod found at Wonder's Line Station 297+84.2.

THENCE, with the south line of a tract of the Indian Lake Reservoir Lands, S 87°-18'-03"E, a distance of 13.10 feet to a 5/8 inch iron rod found on the east line of Virginia Military Survey 13393.



REC'D 12-23-09 SM OK

# Lee Surveying and Mapping Co., Inc.

Land Surveys • Topography • Subdivisions • Construction Layout

117 N. Madriver St.  
Bellefontaine OH 43311



Phone: (937) 593-7335  
Fax: (937) 593-7444  
surveys@lsminc.us

THENCE, with the east line of Virginia Military Survey 13393 and the west line of the aforesaid 2.007 acre tract, S 06°-57'-56"E, a distance of 988.12 feet to the point of beginning.

Containing 4.881 acres.

This parcel is to be attached to an adjoining parcel of land and is not to be used as a separate and independent parcel.

The basis for bearings is the east line of Virginia Military Survey 13393, being N 06°-57'-56"W, and all other bearings are from angles and distances measured in a field survey by Lee Surveying and Mapping Co., Inc. on November 2, 2009, revised December 17, 2009.

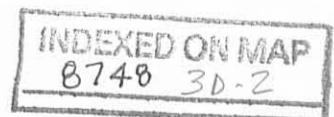


ORIGINAL STAMP IN GREEN

Description prepared by:

William K. Bruce  
Professional Surveyor 7437  
November 3, 2009  
Revised December 17, 2009

1153129REV



# Lee Surveying and Mapping Co., Inc.

Land Surveys • Topography • Subdivisions • Construction Layout

117 N. Madriver St.  
Bellefontaine OH 43311



Phone: (937) 593-7335  
Fax: (937) 593-7444  
surveys@lsminc.us

## STATE OF OHIO INDIAN LAKE RESERVOIR LANDS 0.019 ACRE

Lying in Virginia Military Survey 13393, Richland Township, Logan County, Ohio.

Being out of the State of Ohio Indian Lake Reservoir Lands and being more particularly described as follows:

Commencing on a stone found in a monument box at the southeast corner of Virginia Military Survey 13393 on the center-line of County Highway 38.

THENCE, with the east line of Virginia Military Survey 13393, the east lines of the Longview Cove Group LLC, 1.184 acre tract (O.R. 970, Pg. 191, Tract I) and the O'Connor Farms, Inc., 62.40 acre tract (Vol. 353, Pg. 663, Tract I) and the west line of the Longview Cove Group LLC, 2.007 acre tract (O.R. 970, Pg. 191, Tract III), N 06°-57'-56"W, a distance of 1248.08 feet to a 5/8 inch iron rod found at the TRUE POINT OF BEGINNING, passing a 5/8 inch iron rod found at 259.96 feet.

THENCE, with a north line of the said 62.40 acre tract, N 87°-18'-03"W, a distance of 13.10 feet to a 5/8 inch iron rod found at Wonder's Line Station 297+84.2.

THENCE, with the State Line, N 41°-26'-55"W, a distance of 43.67 feet to a point, referenced by a 5/8 inch iron rod set bearing N 41°-26'-55"W, a distance of 34.84 feet.

THENCE, with a southerly line of the Longview Cove Group LLC, 0.734 acre tract (O.R. 970, Pg. 191, Tract VI), S 87°-54'-52"E, a distance of 38.11 feet to a 3 inch iron pipe found on the east line of Virginia Military Survey 13393.

THENCE, with the east line of Virginia Military Survey 13393 and the west line of the aforesaid 2.007 acre tract, S 06°-57'-56"E, a distance of 32.20 feet to the point of beginning.

Containing 0.019 acre.

This parcel is to be attached to an adjoining parcel of land and is not to be used as a separate and independent parcel.

The basis for bearings is the east line of Virginia Military Survey 13393, being N 06°-57'-56"W, and all other bearings are from angles and distances measured in a field survey by Lee Surveying and Mapping Co., Inc. on November 2, 2009.

Description prepared by:

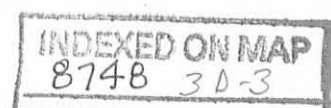


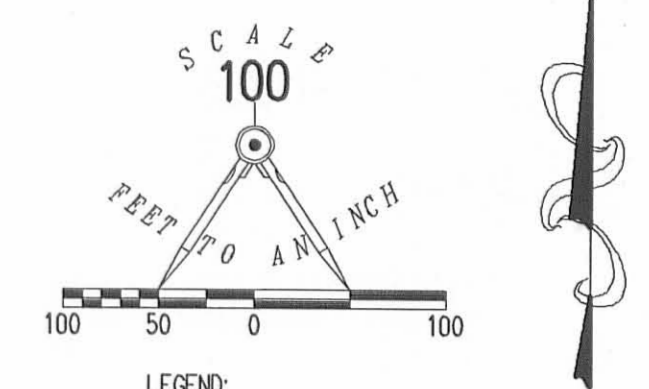
ORIGINAL STAMP IN GREEN

A handwritten signature in black ink that reads 'William K. Bruce'.

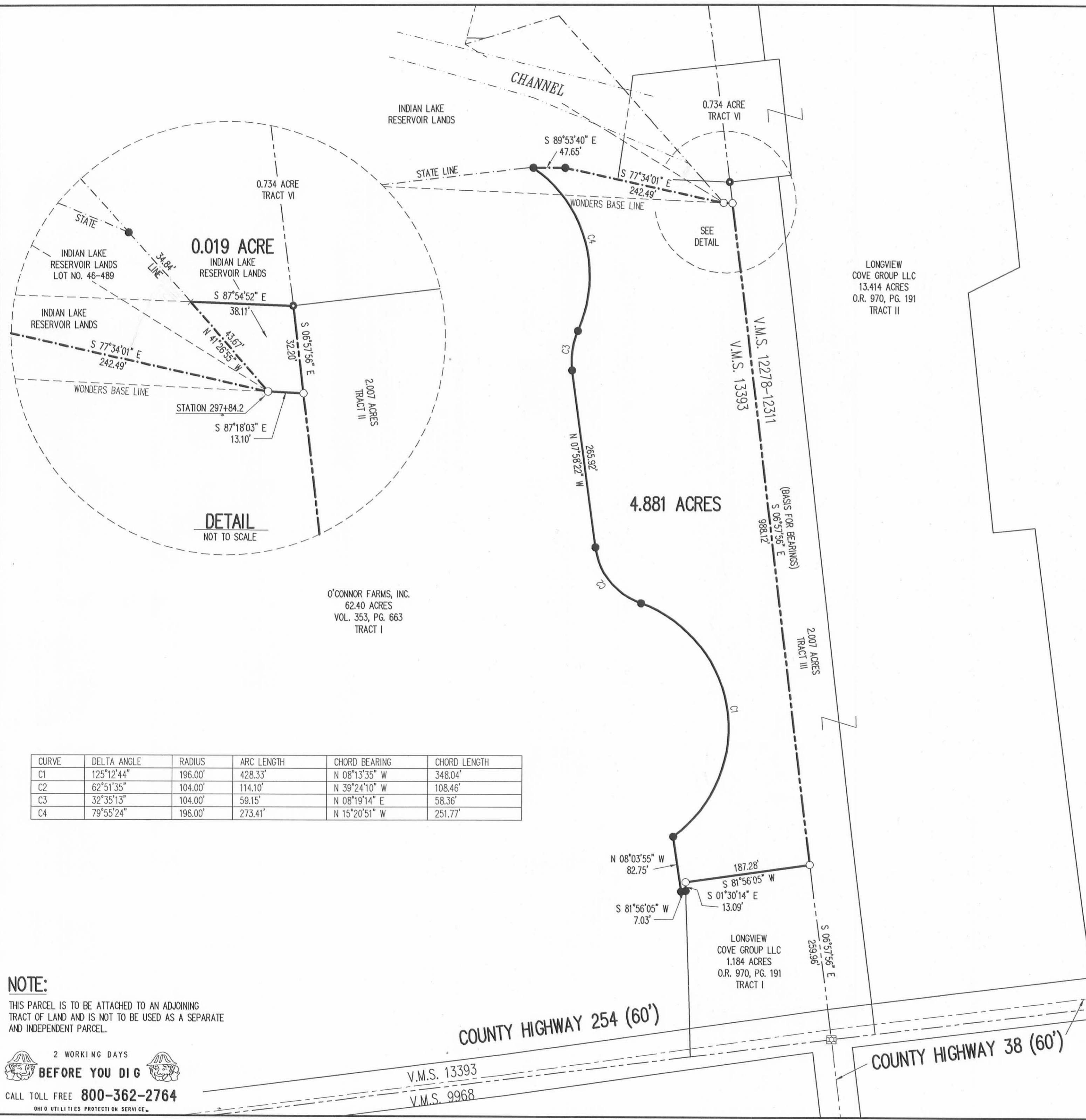
William K. Bruce  
Professional Surveyor 7437  
December 7, 2009

1153129REV





- LEGEND:
- ☐ STONE FOUND IN MONUMENT BOX
  - 5/8 INCH IRON ROD SET WITH PLASTIC I.D. CAP STAMPED "LSM 7437"
  - 5/8 INCH IRON ROD FOUND
  - 3 INCH IRON PIPE FOUND



CURVE	DELTA ANGLE	RADIUS	ARC LENGTH	CHORD BEARING	CHORD LENGTH
C1	125°12'44"	196.00'	428.33'	N 08°13'35" W	348.04'
C2	62°51'35"	104.00'	114.10'	N 39°24'10" W	108.46'
C3	32°35'13"	104.00'	59.15'	N 08°19'14" E	58.36'
C4	79°55'24"	196.00'	273.41'	N 15°20'51" W	251.77'

**SURVEY OF 4.881 ACRES OUT OF THE  
O'CONNOR FARMS, INC.  
62.40 ACRE TRACT  
VOLUME 353, PAGE 663, TRACT I  
AND 0.019 ACRE OUT OF THE  
INDIAN LAKE RESERVOIR LANDS  
VIRGINIA MILITARY SURVEY 13393  
RICHLAND TOWNSHIP  
LOGAN COUNTY, OHIO**

SURVEYED BY:  
*William K. Bruce*  
WILLIAM K. BRUCE  
PROFESSIONAL SURVEYOR 7437  
NOVEMBER 2, 2009  
REVISED DECEMBER 17, 2009

**NOTE:**  
THIS PARCEL IS TO BE ATTACHED TO AN ADJOINING TRACT OF LAND AND IS NOT TO BE USED AS A SEPARATE AND INDEPENDENT PARCEL.

2 WORKING DAYS  
**BEFORE YOU DIG**  
CALL TOLL FREE **800-362-2764**  
OHIO UTILITIES PROTECTION SERVICE

ORIGINAL STAMP IN GREEN  
COPYRIGHT 2009 BY:  
**LEE SURVEYING & MAPPING CO., INC.**  
117 North Madriver Street  
BELLEFONTAINE, OHIO 43311  
(937) 593-7335  
surveys@lsmcinc.us  
KSS LONGVIEW 1153129REV L-1153-2

INDEXED ON MAP  
8748 3P

# Lee Surveying and Mapping Co., Inc.

Land Surveys • Topography • Subdivisions • Construction Layout

117 N. Madriver St.  
Bellefontaine OH 43311



Phone: (937) 593-7335  
Fax: (937) 593-7444  
surveys@lsminc.us

## STATE OF OHIO INDIAN LAKE RESERVOIR LANDS 0.021 ACRE

Lying in Virginia Military Survey 13393, Richland Township, Logan County, Ohio.

Being out of the State of Ohio Indian Lake Reservoir Lands and being more particularly described as follows:

Commencing on a stone found in a monument box at the southeast corner of Virginia Military Survey 13393 on the center-line of County Highway 38.

THENCE, with the east line of Virginia Military Survey 13393 and the west line of the Longview Cove Group LLC, 2.007 acre tract (O.R. 970, Pg. 191, Tract III), N 06°-57'-56"W, a distance of 1248.08 feet to a 5/8 inch iron rod found.

THENCE, with a north line of the O'Connor Farms, Inc., 62.40 acre tract (Vol. 353, Pg. 663, Tract I), N 87°-18'-03"W, a distance of 13.10 feet to a 5/8 inch iron rod found at the TRUE POINT OF BEGINNING.

THENCE, with a north line of the said 62.40 acre tract, N 77°-34'-01"W, a distance of 57.74 feet to a point, referenced by a 5/8 inch iron rod set bearing N 77°-34'-01"W, a distance of 184.75 feet.

THENCE, N 29°-10'-59"E, a distance of 23.91 feet to a point, referenced by a 5/8 inch iron rod found bearing N 87°-54'-52"W, a distance of 113.18 feet.

THENCE, with the south line of the Indian Lake Reservoir Lands Lot No. 46-489 (Plat Cabinet A, Slide 481), S 87°-54'-52"E, a distance of 15.83 feet to a point, referenced by a 3 inch iron pipe found bearing S 87°-54'-52"E, a distance of 35.02 feet.

THENCE, S 41°-26'-55"E, a distance of 43.67 feet to the point of beginning.

Containing 0.021 acre.

This parcel is to be attached to an adjoining parcel of land and is not to be used as a separate and independent parcel.

The basis for bearings is the east line of Virginia Military Survey 13393, being N 06°-57'-56"W, and all other bearings are from angles and distances measured in a field survey by Lee Surveying and Mapping Co., Inc. on November 2, 2009.

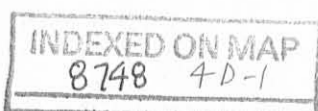


ORIGINAL STAMP IN GREEN

Description prepared by:

William K. Bruce  
Professional Surveyor 7437  
December 23, 2009

1153129B



PLAT 12-29-09 SKM BK  
**Lee Surveying and Mapping Co., Inc.**

Land Surveys • Topography • Subdivisions • Construction Layout

117 N. Madriver St.  
Bellefontaine OH 43311



Phone: (937) 593-7335  
Fax: (937) 593-7444  
surveys@lsminc.us

**STATE OF OHIO  
INDIAN LAKE RESERVOIR LANDS  
0.002 ACRE**

Lying in Virginia Military Survey 13393, Richland Township, Logan County, Ohio.

Being out of the State of Ohio Indian Lake Reservoir Lands Lot No. 46-489 (Plat Cabinet A, Slide 481) and being more particularly described as follows:

Commencing on a stone found in a monument box at the southeast corner of Virginia Military Survey 13393 on the center-line of County Highway 38.

THENCE, with the east line of Virginia Military Survey 13393 and the west line of the Longview Cove Group LLC, 2.007 acre tract (O.R. 970, Pg. 191, Tract III), N 06°-57'-56"W, a distance of 1248.08 feet to a 5/8 inch iron rod found.

THENCE, with a north line of the O'Connor Farms, Inc., 62.40 acre tract (Vol. 353, Pg. 663, Tract I), N 87°-18'-03"W, a distance of 13.10 feet to a 5/8 inch iron rod found.

THENCE, N 41°-26'-55"W, a distance of 43.67 feet to a point at the TRUE POINT OF BEGINNING, referenced by a 3 inch iron pipe found bearing S 87°-54'-52"E, a distance of 35.02 feet.

THENCE, with the south line of the Indian Lake Reservoir Lands Lot No. 46-489, N 87°-54'-52"W, a distance of 15.83 feet to a point, referenced by a 5/8 inch iron rod found bearing N 87°-54'-52"W, a distance of 113.18 feet.

THENCE, N 29°-10'-59"E, a distance of 12.16 feet to a point, referenced by a 5/8 inch iron rod found bearing N 41°-26'-55"W, a distance of 19.91 feet.

THENCE, with a westerly line of the Longview Cove Group LLC, 0.734 acre tract (O.R. 970, Pg. 191, Tract VI), S 41°-26'-55"E, a distance of 14.93 feet to the point of beginning.

Containing 0.002 acre.

This parcel is to be attached to an adjoining parcel of land and is not to be used as a separate and independent parcel.

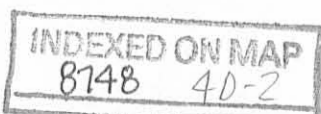
The basis for bearings is the east line of Virginia Military Survey 13393, being N 06°-57'-56"W, and all other bearings are from angles and distances measured in a field survey by Lee Surveying and Mapping Co., Inc. on November 2, 2009.



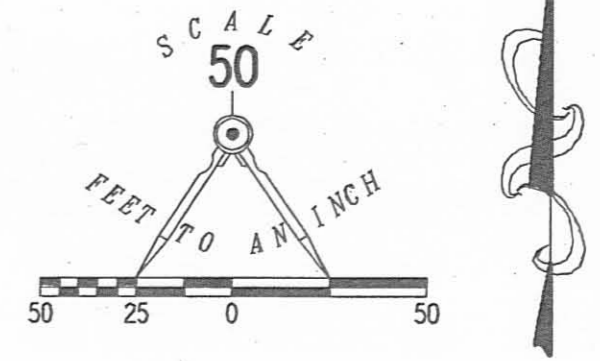
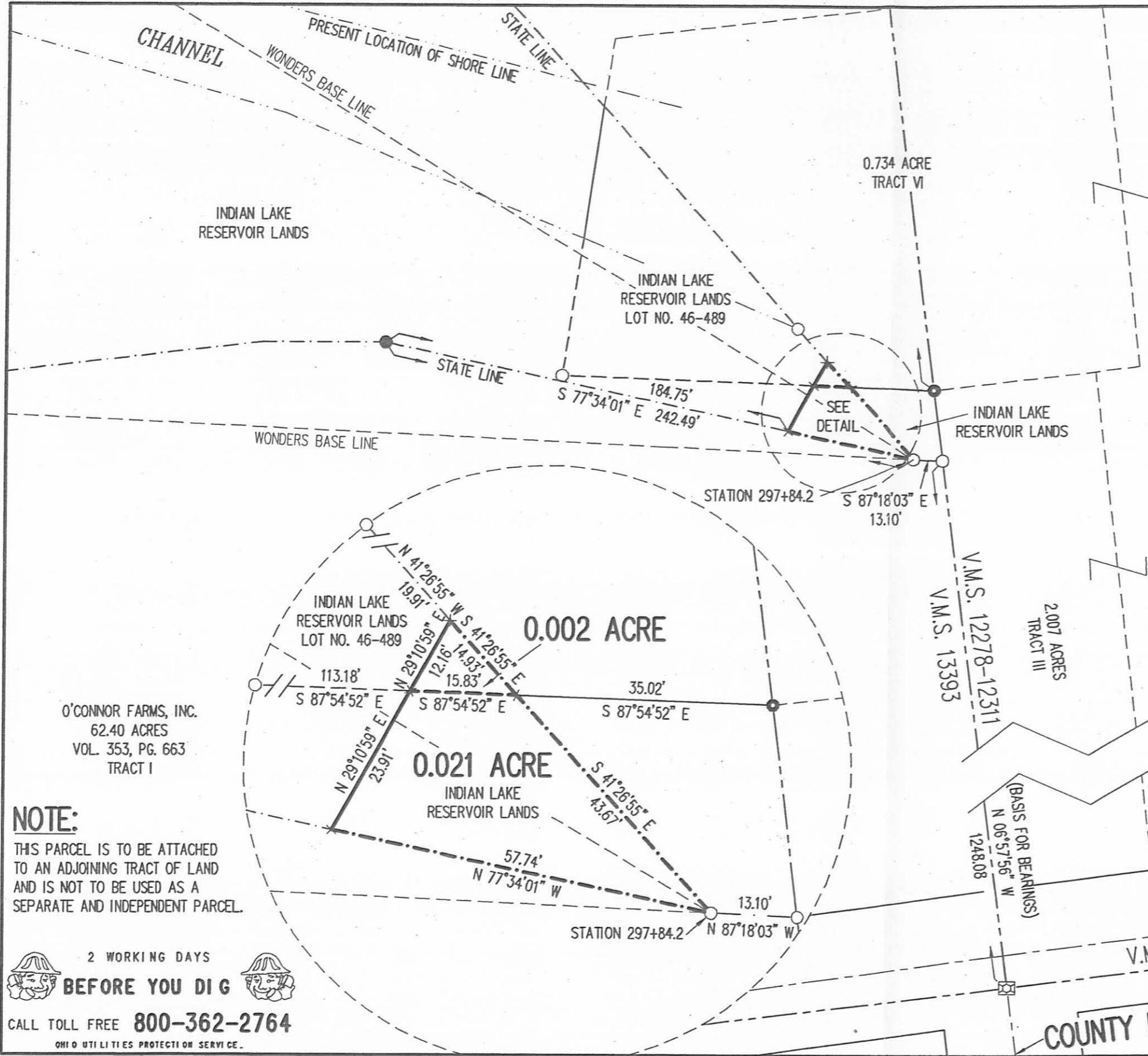
Description prepared by:

William K. Bruce  
Professional Surveyor 7437  
December 23, 2009

1153129B



REV'D 12-29-09 SUM OK



- LEGEND:
- ☐ STONE FOUND IN MONUMENT BOX
  - 5/8 INCH IRON ROD FOUND
  - 3 INCH IRON PIPE FOUND
  - 5/8 INCH IRON ROD SET WITH PLASTIC I.D. CAP STAMPED "LEE-7437"

**SURVEY OF 0.021 ACRE OUT OF THE INDIAN LAKE RESERVOIR LANDS AND 0.002 ACRE OUT OF THE INDIAN LAKE RESERVOIR LANDS LOT NO. 46-489**  
**PLAT CABINET A, SLIDE 481**  
**VIRGINIA MILITARY SURVEY 13393**  
**RICHLAND TOWNSHIP**  
**LOGAN COUNTY, OHIO**

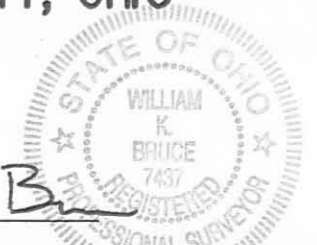
LONGVIEW COVE GROUP LLC  
 13.414 ACRES  
 O.R. 970, PG. 191  
 TRACT II

O'CONNOR FARMS, INC.  
 62.40 ACRES  
 VOL. 353, PG. 663  
 TRACT I

**NOTE:**  
 THIS PARCEL IS TO BE ATTACHED TO AN ADJOINING TRACT OF LAND AND IS NOT TO BE USED AS A SEPARATE AND INDEPENDENT PARCEL.

2 WORKING DAYS  
**BEFORE YOU DIG**  
 CALL TOLL FREE **800-362-2764**  
 OHIO UTILITIES PROTECTION SERVICE.

SURVEYED BY:  
*William K. Bruce*  
 WILLIAM K. BRUCE  
 PROFESSIONAL SURVEYOR 7437  
 NOVEMBER 2, 2009 ORIGINAL STAMP IN GREEN



COPYRIGHT 2009 BY:  
**LEE SURVEYING & MAPPING CO., INC.**  
 117 North Madriver Street  
 BELLEFONTAINE, OHIO 43311  
 (937) 593-7335  
 surveys@lsminc.us  
 KSS LONGVIEW COVE 1153129B L-1153-3

**INDEXED ON MAP**  
 8748 4P

# Lee Surveying and Mapping Co., Inc.

Land Surveys • Topography • Subdivisions • Construction Layout

117 N. Madriver St.  
Bellefontaine OH 43311



Phone: (937) 593-7335  
Fax: (937) 593-7444  
surveys@lsminc.us

## LONGVIEW COVE GROUP LLC 25.00 FEET WIDE GAS LINE EASEMENT

Lying in Virginia Military Surveys 13393 and 12278-12311, Richland Township, Logan County, Ohio.

Being a 25.00 feet wide gas line easement over a portion of the Longview Cove Group LLC, 1.184 acre tract, 2.007 acre tract and 13.414 acre tract as deeded and described in Official Record 970, Page 191, Tracts I, III and II of the Logan County Records of Deeds and being more particularly described as follows:

Commencing on a stone found in a monument box on the southeast corner of Virginia Military Survey 13393 on the center-line of County Highway 38.

THENCE, with the south line of Virginia Military Survey 13393 and within the right-of-way of County Highway 254 (60 feet wide), S 82°-55'-21"W, a distance of 211.80 feet to a MAG spike found.

THENCE, with an east line of the remainder of the O'Connor Farms, Inc., original 62.40 acre tract (Vol. 353, Pg. 663, Tract I), N 01°-30'-14"W, a distance of 41.66 feet to a 5/8 inch iron rod found on the north right-of-way of County Highway 254 at the TRUE POINT OF BEGINNING, passing a PK nail found on the center-line of County Highway 254 at 11.48 feet.

THENCE, with an east line of the remainder of the said original 62.40 acre tract, N 01°-30'-14"W, a distance of 25.16 feet to a point.

THENCE, N 81°-56'-59"E, a distance of 204.92 feet to a point on the east line of Virginia Military Survey 13393 and the west line of Virginia Military Survey 12278-12311.

THENCE, N 82°-58'-30"E, a distance of 215.46 feet to a point.

THENCE, S 07°-13'-34"E, a distance of 25.00 feet to a point on the north right-of-way of County Highway 38 (60 feet wide).

THENCE, with the north right-of-way of County Highway 38, S 82°-58'-30"W, a distance of 215.25 feet to a 5/8 inch iron rod found on the east line of Virginia Military Survey 13393 and the west line of Virginia Military Survey 12278-12311.

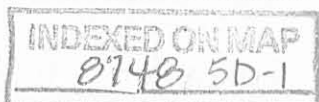
THENCE, with the north right-of-way of County Highway 254, S 81°-56'-59"W, a distance of 207.57 feet to the point of beginning.

Property is subject to any and all previous easements and rights-of-way of record.

The basis for bearings is the east line of Virginia Military Survey 13393, being S 06°-57'-56"E, and all other bearings are from angles and distances measured in a field survey by Lee Surveying and Mapping Co., Inc. on December 17, 2009.



ORIGINAL STAMP IN GREEN



Description prepared by:

William K. Bruce  
Professional Surveyor 7437  
September 14, 2010

1153GAS



REC'D 9-16-10 smj/uc

# Lee Surveying and Mapping Co., Inc.

Land Surveys • Topography • Subdivisions • Construction Layout

117 N. Madriver St.  
Bellefontaine OH 43311



Phone: (937) 593-7335  
Fax: (937) 593-7444  
surveys@lsminc.us

## O'CONNOR FARMS, INC. 25.00 FEET WIDE GAS LINE EASEMENT

Lying in Virginia Military Survey 13393, Richland Township, Logan County, Ohio.

Being a 25.00 feet wide gas line easement over a portion of the O'Connor Farms, Inc., 62.40 acre tract as deeded and described in Volume 353, Page 663, Tract I of the Logan County Records of Deeds and being more particularly described as follows:

Commencing on a stone found in a monument box on the southeast corner of Virginia Military Survey 13393 on the center-line of County Highway 38.

THENCE, with the south line of Virginia Military Survey 13393 and within the right-of-way of County Highway 254 (60 feet wide), S 82°-55'-21"W, a distance of 211.80 feet to a MAG spike found.

THENCE, with the west line of the Longview Cove Group LLC, 1.184 acre tract (O.R. 970, Pg. 191, Tract I), N 01°-30'-14"W, a distance of 41.66 feet to a 5/8 inch iron rod found on the north right-of-way of County Highway 254 at the TRUE POINT OF BEGINNING, passing a PK nail found on the center-line of County Highway 254 at 11.48 feet.

THENCE, with the north right-of-way of County Highway 254, S 81°-56'-59"W, a distance of 267.13 feet to a point.

THENCE, N 08°-03'-04"W, a distance of 25.00 feet to a point.

THENCE, N 81°-56'-59"E, a distance of 270.00 feet to a point.

THENCE, with the west line of the aforesaid 1.184 acre tract, S 01°-30'-14"E, a distance of 25.16 feet to the point of beginning.

Property is subject to any and all previous easements and rights-of-way of record.

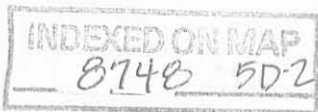
The basis for bearings is the east line of Virginia Military Survey 13393, being S 06°-57'-56"E, and all other bearings are from angles and distances measured in a field survey by Lee Surveying and Mapping Co., Inc. on December 17, 2009.

Description prepared by:

William K. Bruce  
Professional Surveyor 7437  
September 14, 2010



1153GAS



REC'D 9-22-10 SMJ OK

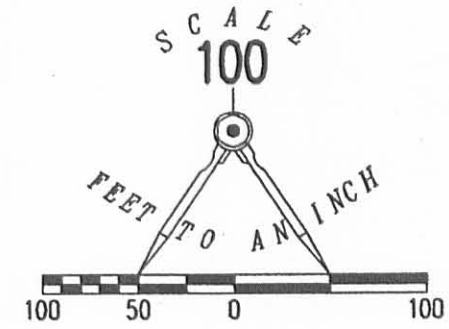
O'CONNOR FARMS, INC.  
62.40 ACRES  
VOL. 353, PG. 663  
TRACT I

LONGVIEW  
COVE GROUP LLC  
13.414 ACRES  
O.R. 970, PG. 191  
TRACT II

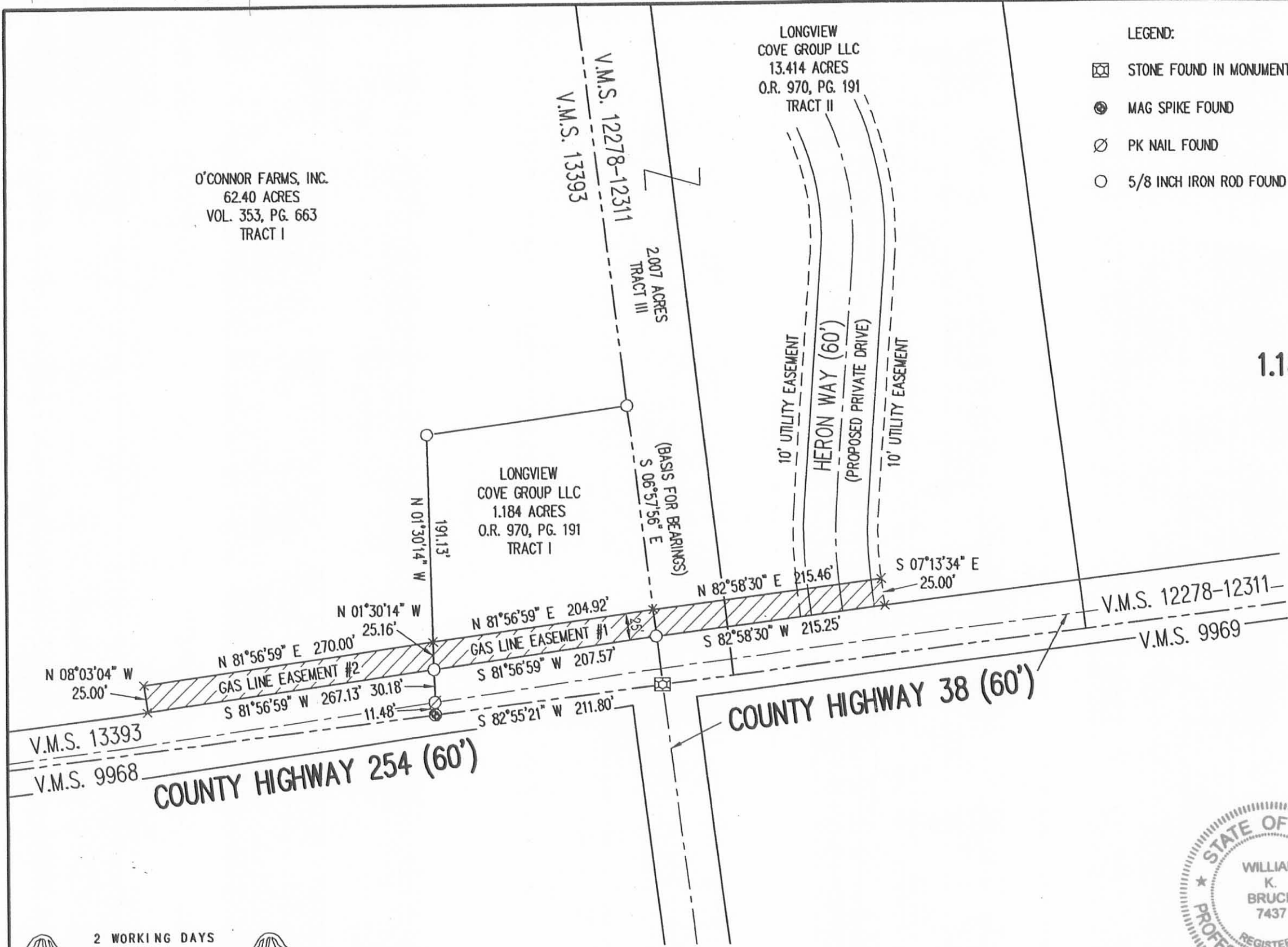
LONGVIEW  
COVE GROUP LLC  
1.184 ACRES  
O.R. 970, PG. 191  
TRACT I

LEGEND:

- ☒ STONE FOUND IN MONUMENT BOX
- ⊙ MAG SPIKE FOUND
- ⊘ PK NAIL FOUND
- 5/8 INCH IRON ROD FOUND

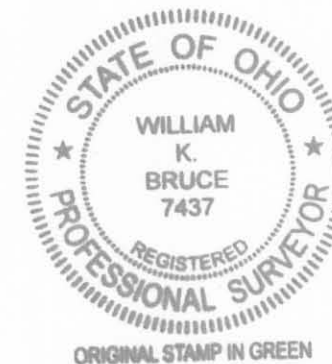


SURVEY OF A 25.00 FEET WIDE  
GAS LINE EASEMENT OVER THE  
LONGVIEW COVE GROUP LLC  
1.184 ACRE TRACT, 2.007 ACRE TRACT  
AND 13.414 ACRE TRACT  
OFFICIAL RECORD 970, PAGE 191  
TRACTS I, III AND II  
AND THE O'CONNOR FARMS, INC.  
62.40 ACRE TRACT  
VOLUME 353, PAGE 663  
TRACT I  
VIRGINIA MILITARY SURVEYS  
13393 AND 12278-12311  
RICHLAND TOWNSHIP  
LOGAN COUNTY, OHIO



PREPARED BY:

*William K. Bruce*  
WILLIAM K. BRUCE  
PROFESSIONAL SURVEYOR 7437  
SEPTEMBER 13, 2010



COPYRIGHT 2010 BY:  
LEE SURVEYING & MAPPING CO., INC.  
117 North Madriver Street  
BELLEFONTAINE, OHIO 43311  
(937) 593-7335  
surveys@lsmcinc.us  
KSS LONGVIEW COVE 1153GAS L-1153-3

2 WORKING DAYS  
**BEFORE YOU DIG**  
CALL TOLL FREE **800-362-2764**  
OHIO UTILITIES PROTECTION SERVICE

INDEXED ON MAP  
8748 5P

REID 11-4-10 SMJ OK

# Lee Surveying and Mapping Co., Inc.

Land Surveys • Topography • Subdivisions • Construction Layout

117 N. Madriver St.  
Bellefontaine OH 43311



Phone: (937) 593-7335  
Fax: (937) 593-7444  
surveys@lsminc.us

## INDIAN LAKE RESERVOIR LANDS 1.880 ACRES

Lying in Virginia Military Survey 13393, Richland Township, Logan County, Ohio.

Being out of the Indian Lake Reservoir Lands and being more particularly described as follows:

Commencing on a stone found in a monument box at the southeast corner of Virginia Military Survey 13393 on the center-line of County Highway 38.

THENCE, with the east line of Virginia Military Survey 13393, N 6°-57'-56"W, a distance of 1248.08 feet to a 5/8 inch iron rod found.

THENCE, with a north line of the O'Connor Farms, Inc., 62.40 acre tract (Vol. 353, Pg. 663, Tract I), N 87°-18'-03"W, a distance of 13.10 feet to a 5/8 inch iron rod found on the State Line at Station 297+84.2 (Wonders Line Field Notes, Book 1, Pages 45-51).

THENCE, with the State Line and a north line of the said 62.40 acre tract, N 77°-34'-01"W, a distance of 57.74 feet to a point at the TRUE POINT OF BEGINNING.

THENCE, with the State Line and the north lines of the said 62.40 acre tract, the following five courses

N 77°-34'-01"W, a distance of 184.75 feet to a 5/8 inch iron rod set.

N 89°-53'-40"W, a distance of 55.26 feet to a point.

S 83°-18'-15"W, a distance of 235.86 feet to a 5/8 inch iron rod found at Wonders Line Station 292+54.3.

N 86°-14'-20"W, a distance of 263.52 feet to a point.

N 49°-41'-18"W, a distance of 117.56 feet to a point on the shore line of Indian Lake.

THENCE, with the shore line of Indian Lake, the following five courses:

S 67°-51'-37"E, a distance of 126.26 feet to a point, referenced by a 5/8 inch iron rod found bearing S 22°-08'-21"W, a distance of 20.00 feet.

N 73°-47'-04"E, a distance of 111.58 feet to a point, referenced by a 5/8 inch iron rod found bearing S 12°-38'-22"W, a distance of 64.24 feet.

# Lee Surveying and Mapping Co., Inc.

Land Surveys • Topography • Subdivisions • Construction Layout

117 N. Madriver St.  
Bellefontaine OH 43311



Phone: (937) 593-7335  
Fax: (937) 593-7444  
surveys@lsminc.us

N 12°-38'-22"E, a distance of 155.44 feet to a point, referenced by a 5/8 inch iron rod found bearing S 28°-53'-05"E, a distance of 2.00 feet.

S 73°-52'-12"E, a distance of 352.11 feet to a point, referenced by a 5/8 inch iron rod found bearing S 16°-08'-32"W, a distance of 2.00 feet.

S 67°-14'-34"E, a distance of 145.06 feet to a point on the west line of Indian Lake Reservoir Lands Lot No. 46-489 (Plat Cabinet A, Slide 481).

THENCE, with the lines of the Indian Lake Reservoir Lands Lot No. 46-489, the following two courses:

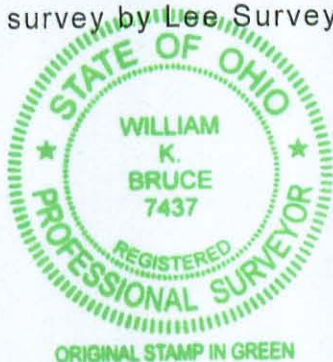
S 8°-17'-26"W, a distance of 62.69 feet to a 5/8 inch iron rod found.

S 87°-54'-52"E, a distance of 113.18 feet to a point.

THENCE, S 29°-10'-59"W, a distance of 23.91 feet to the point of beginning.

Containing 1.880 acres.

The basis for bearings is the east line of Virginia Military Survey 13393, being N 06°-57'-56"W, and all other bearings are from angles and distances measured in a field survey by Lee Surveying and Mapping Co., Inc. on November 2, 2009.



Description prepared by:

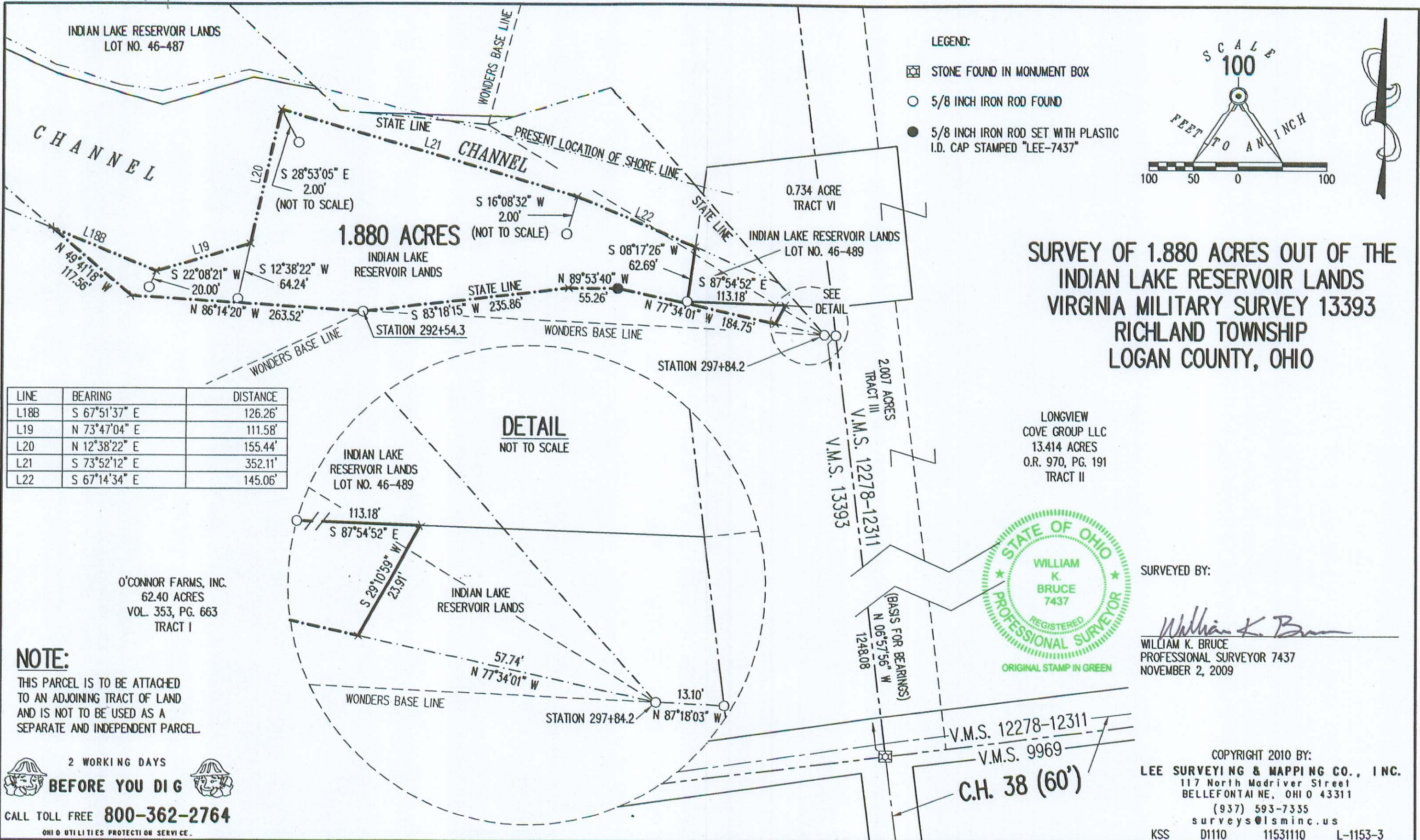
A handwritten signature in black ink that reads 'William K. Bruce'.

William K. Bruce  
Professional Surveyor 7437  
November 3, 2010

11531110



REC'D 11-4-10 S.M.J.



INDEXED ON MAP  
8748 6P

REC'D 11-8-10 SWM OK

# Lee Surveying and Mapping Co., Inc.

Land Surveys • Topography • Subdivisions • Construction Layout

117 N. Madriver St.  
Bellefontaine OH 43311



Phone: (937) 593-7335  
Fax: (937) 593-7444  
surveys@lsminc.us

INDEXED ON MAP  
8748 TD-1

## INDIAN LAKE RESERVOIR LANDS 0.663 ACRE

Lying in Virginia Military Survey 13393, Richland Township, Logan County, Ohio.

Being out of the Indian Lake Reservoir Lands and being more particularly described as follows:

Beginning on a 5/8 inch iron rod set on the southeast corner of Lot 39 of the O'Connor Allotment (Plat Cabinet A, Slide 273).

THENCE, with the east line of the Boyd L. Jarrett 0.154 acre tract (O.R. 921, Pg. 574, Tract II), N 20°-13'-05"W, a distance of 66.86 feet to a point on the end of a concrete seawall.

THENCE, with the shore line of Indian Lake, the following eleven courses:

S 39°-14'-22"E, a distance of 20.09 feet to a point.

S 59°-22'-01"E, a distance of 40.67 feet to a point, referenced by a 5/8 inch iron rod set bearing S 42°-54'-57"W, a distance of 0.90 feet.

S 59°-21'-58"E, a distance of 25.10 feet to a point, referenced by a 5/8 inch iron rod set bearing N 71°-23'-01"E, a distance of 1.00 feet.

N 18°-36'-25"W, a distance of 58.74 feet to a point, referenced by a 5/8 inch iron rod set bearing N 71°-23'-01"E, a distance of 1.00 feet.

N 12°-53'-30"W, a distance of 110.65 feet to a point, referenced by a 5/8 inch iron rod set bearing S 87°-35'-33"E, a distance of 1.00 feet.

N 2°-26'-11"E, a distance of 88.40 feet to a point, referenced by a 5/8 inch iron rod set bearing S 87°-32'-07"E, a distance of 1.00 feet.

N 23°-20'-17"E, a distance of 69.47 feet to a point, referenced by a 5/8 inch iron rod set bearing S 11°-57'-02"W, a distance of 1.00 feet.

S 13°-04'-55"E, a distance of 110.50 feet to a point, referenced by a 5/8 inch iron rod set bearing S 76°-52'-51"W, a distance of 1.00 feet.

N 52°-50'-34"E, a distance of 106.64 feet to a point, referenced by a 5/8 inch iron rod set bearing S 52°-14'-08"E, a distance of 1.00 feet.

N 37°-46'-13"E, a distance of 99.18 feet to a point, referenced by a 5/8 inch iron rod set bearing S 25°-43'-10"E, a distance of 1.00 feet.

S 70°-42'-37"E, a distance of 38.20 feet to a point on the State Line.

THENCE, with the State Line and the lines of the O'Connor Farms, Inc., 62.40 acre tract (Vol. 353, Pg. 663, Tract I), the following four courses:

S 71°-40'-21"W, a distance of 8.20 feet to a 5/8 inch iron rod set at Corner 12, Station 281+32 (Wonders Line Field Notes, Book 1, Pages 45-51).

S 36°-07'-01"W, a distance of 247.50 feet to a point.

S 8°-40'-15"W, a distance of 202.31 feet to a 5/8 inch iron rod set at Wonders Line Station 276+94.9.

N 48°-58'-43"W, a distance of 45.66 feet to a 5/8 inch iron rod set on the east line of O'Conner Allotment.

# Lee Surveying and Mapping Co., Inc.

Land Surveys • Topography • Subdivisions • Construction Layout

117 N. Madriver St.  
Bellefontaine OH 43311



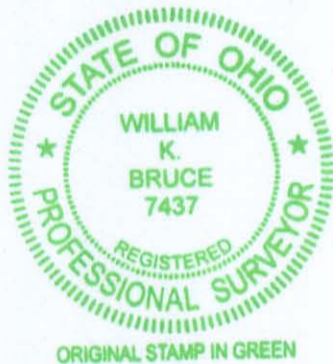
Phone: (937) 593-7335  
Fax: (937) 593-7444  
surveys@lsminc.us

THENCE, with the east line of O'Connor Allotment, N 47°-05'-03"W, a distance of 30.37 feet to the point of beginning.

Containing 0.663 acre.

A portion of this property is subject to a conservation easement.

The basis for bearings is the south line of Virginia Military Survey 13393, being S 82°-55'-21"W, and all other bearings are from angles and distances measured in a field survey by Lee Surveying and Mapping Co., Inc. on December 14, 2007 and revised January 29, 2008 and November 5, 2010.



Description prepared by:

A handwritten signature in black ink that reads 'William K. Bruce'.

William K. Bruce  
Professional Surveyor 7437  
January 29, 2008,  
Revised November 5, 2010

11531110A



# Lee Surveying and Mapping Co., Inc.

Land Surveys • Topography • Subdivisions • Construction Layout

117 N. Madriver St.  
Bellefontaine OH 43311



Phone: (937) 593-7335  
Fax: (937) 593-7444  
surveys@lsminc.us

## INDIAN LAKE RESERVOIR LANDS CONSERVATION EASEMENT 0.435 ACRE

Lying in Virginia Military Survey 13393, Richland Township, Logan County, Ohio.

Being a conservation easement over a portion of the Indian Lake Reservoir Lands and being more particularly described as follows:

Beginning on a 5/8 inch iron rod set on the southeast corner of Lot 39 of the O'Connor Allotment (Plat Cabinet A, Slide 273).

THENCE, with the east line of the Boyd L. Jarrett 0.154 acre tract (O.R. 921, Pg. 574, Tract II), N 20°-13'-05"W, a distance of 66.86 feet to a point on the end of a concrete seawall.

THENCE, with the shore line of Indian Lake, the following eight courses:

S 39°-14'-22"E, a distance of 20.09 feet to a point.

S 59°-22'-01"E, a distance of 40.67 feet to a point, referenced by a 5/8 inch iron rod set bearing S 42°-54'-57"W, a distance of 0.90 feet.

S 59°-21'-58"E, a distance of 25.10 feet to a point, referenced by a 5/8 inch iron rod set bearing N 71°-23'-01"E, a distance of 1.00 feet.

N 18°-36'-25"W, a distance of 58.74 feet to a point, referenced by a 5/8 inch iron rod set bearing N 71°-23'-01"E, a distance of 1.00 feet.

N 12°-53'-30"W, a distance of 110.65 feet to a point, referenced by a 5/8 inch iron rod set bearing S 87°-35'-33"E, a distance of 1.00 feet.

N 2°-26'-11"E, a distance of 88.40 feet to a point, referenced by a 5/8 inch iron rod set bearing S 87°-32'-07"E, a distance of 1.00 feet.

N 23°-20'-17"E, a distance of 69.47 feet to a point, referenced by a 5/8 inch iron rod set bearing S 11°-57'-02"W, a distance of 1.00 feet.

S 13°-04'-55"E, a distance of 110.50 feet to a point, referenced by a 5/8 inch iron rod set bearing S 76°-52'-51"W, a distance of 1.00 feet.

THENCE, S 21°-15'-15"E, a distance of 77.59 feet to a point on the State Line.

THENCE, with the State Line and the lines of the O'Connor Farms, Inc., 62.40 acre tract (Vol. 353, Pg. 663, Tract I), the following two courses:

S 8°-40'-15"W, a distance of 202.31 feet to a 5/8 inch iron rod set at Wonders Line Station 276+94.9.

N 48°-58'-43"W, a distance of 45.66 feet to a 5/8 inch iron rod set on the east line of O'Connor Allotment.





# Lee Surveying and Mapping Co., Inc.

Land Surveys • Topography • Subdivisions • Construction Layout

117 N. Madriver St.  
Bellefontaine OH 43311



Phone: (937) 593-7335  
Fax: (937) 593-7444  
surveys@lsminc.us

THENCE, with the east line of O'Connor Allotment, N 47°-05'-03"W, a distance of 30.37 feet to the point of beginning.

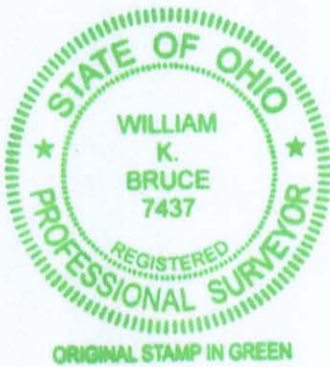
Containing 0.435 acre.

The basis for bearings is the south line of Virginia Military Survey 13393, being S 82°-55'-21"W, and all other bearings are from angles and distances measured in a field survey by Lee Surveying and Mapping Co., Inc. on December 14, 2007 and revised January 29, 2008 and November 5, 2010.

Description prepared by:

A handwritten signature in black ink that reads 'William K. Bruce'.

William K. Bruce  
Professional Surveyor 7437  
November 5, 2010

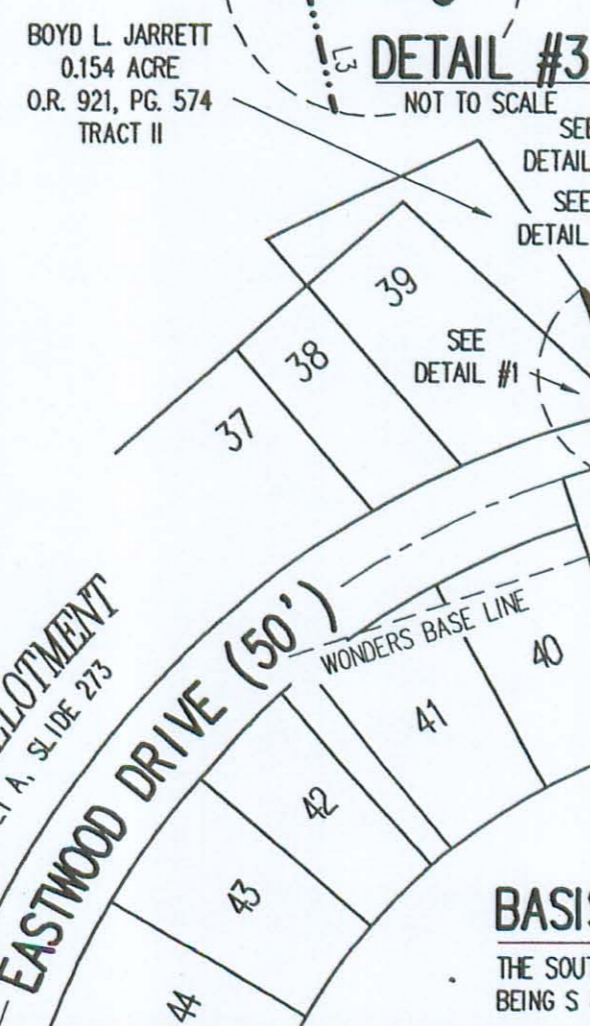
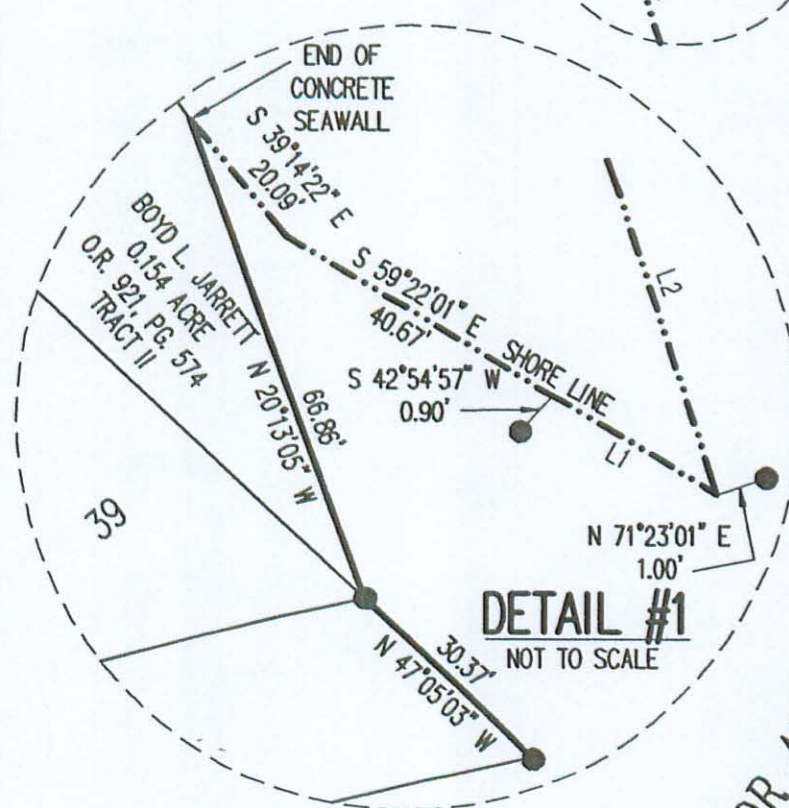
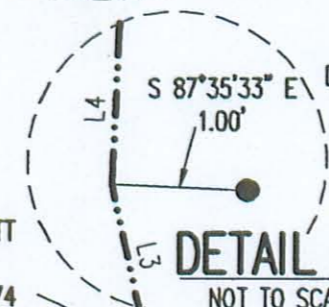
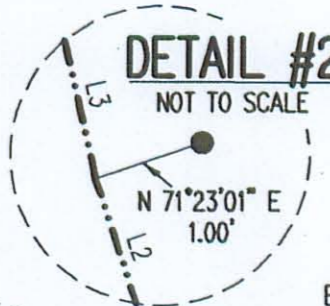
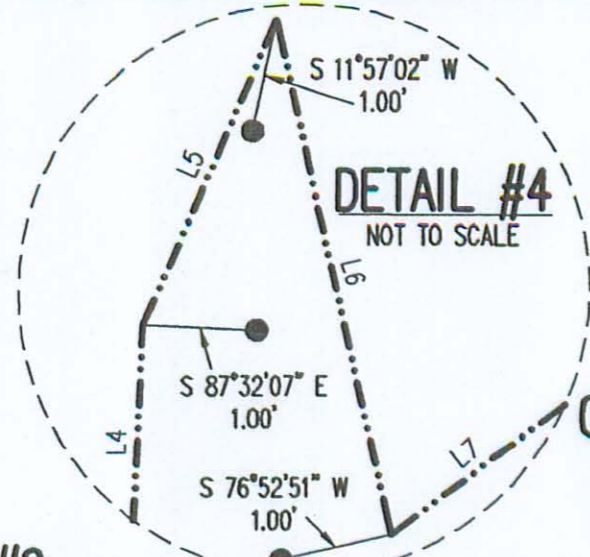


11531110A

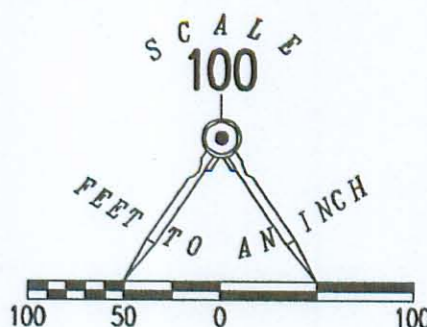


RECID 11-8-10 SMM R/L

LINE	BEARING	DISTANCE
L1	S 59°21'58" E	25.10'
L2	N 18°36'25" W	58.74'
L3	N 12°53'30" W	110.65'
L4	N 02°26'11" E	88.40'
L5	N 23°20'17" E	69.47'
L6	S 13°04'55" E	110.50'
L7	N 52°50'34" E	106.64'
L8	N 37°46'13" E	99.18'
L9	S 70°42'37" E	38.20'



INDIAN LAKE



LEGEND:  
● 5/8 INCH IRON ROD SET WITH PLASTIC I.D. CAP STAMPED "LSM 7437"

**SURVEY OF 0.663 ACRE OUT OF THE INDIAN LAKE RESERVOIR LANDS VIRGINIA MILITARY SURVEY 13393 RICHLAND TOWNSHIP LOGAN COUNTY, OHIO**

SURVEYED BY:

*William K. Bruce*  
WILLIAM K. BRUCE  
PROFESSIONAL SURVEYOR 7437  
DECEMBER 14, 2007, REVISED JANUARY 29, 2008 AND REVISED NOVEMBER 5, 2010 (CONSERVATION EASEMENT ADDED)



**BASIS FOR BEARINGS:**  
THE SOUTH LINE OF VIRGINIA MILITARY SURVEY 13393, BEING S 82°55'21" W.

2 WORKING DAYS BEFORE YOU DIG  
CALL TOLL FREE 800-362-2764  
OHIO UTILITIES PROTECTION SERVICE

COPYRIGHT 2010 BY:  
LEE SURVEYING & MAPPING CO., INC.  
117 North Madriver Street  
BELLEFONTAINE, OHIO 43111  
(937) 593-7335  
surveys@lsminc.us  
KSS D1110 1153110A L-1153-3

INDEXED ON MAP  
8748 7P

7-21-2021

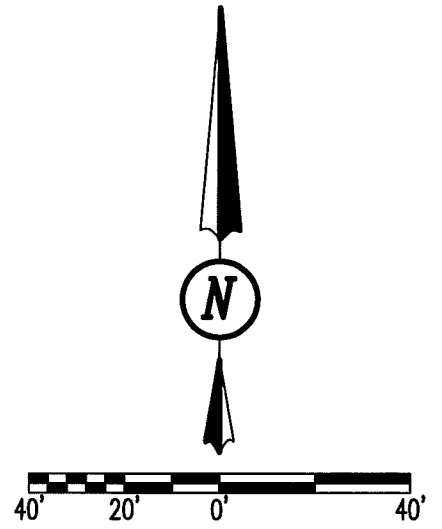
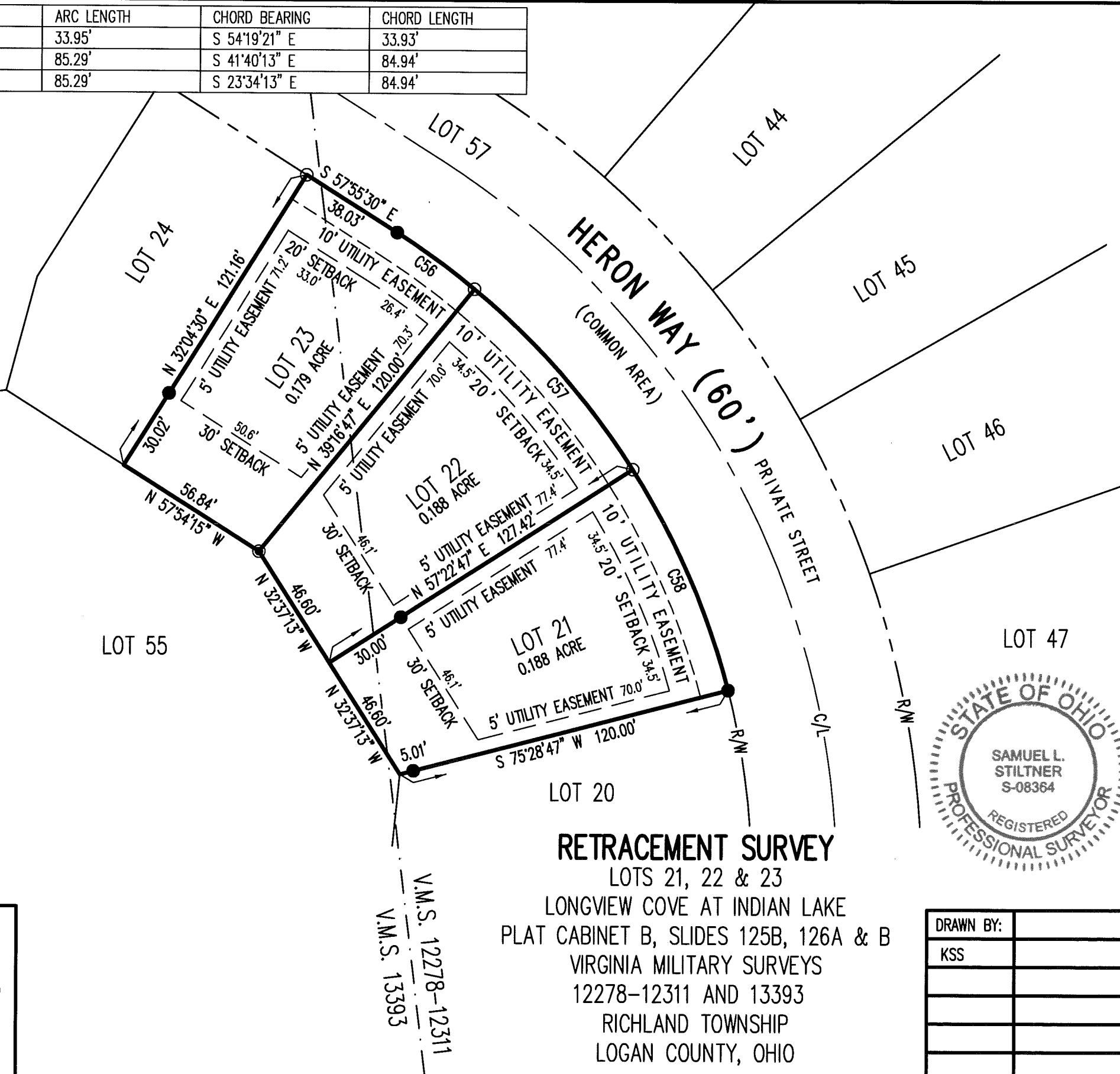
APPROVED

CURVE	DELTA ANGLE	RADIUS	ARC LENGTH	CHORD BEARING	CHORD LENGTH
C56	07°12'17"	270.00'	33.95'	S 54°19'21" E	33.93'
C57	18°06'00"	270.00'	85.29'	S 41°40'13" E	84.94'
C58	18°06'00"	270.00'	85.29'	S 23°34'13" E	84.94'

LEGEND:

- MAG NAIL SET
- 5/8 INCH REBAR FOUND
- 5/8 INCH BY 30 INCH REBAR SET WITH YELLOW CAP STAMPED "DLZ OHIO INC."
- R/W = RIGHT-OF-WAY
- C/L = CENTER-LINE
- V.M.S. = VIRGINIA MILITARY SURVEY

LOT 25



OCCUPATION NOTE:

NO EVIDENCE OF OCCUPATION ALONG BOUNDARY LINES UNLESS OTHERWISE SHOWN

BASIS FOR BEARINGS:

BEARINGS AND DISTANCES, SHOWN HEREON, ARE DERIVED FROM GPS OBSERVATIONS BASED ON GRID NORTH, OHIO STATE PLANE COORDINATE SYSTEM, NORTH ZONE, NAD83 (2011, EPOCH 2010).

CERTIFICATION:

THIS PLAT WAS PREPARED BY DLZ OHIO, INC. AND IS A TRUE AND ACCURATE REPRESENTATION, TO THE BEST OF MY KNOWLEDGE AND BELIEF, OF A SURVEY MADE BY THE SAME IN MONTH, 2021.

THIS SURVEY WAS PERFORMED WITHOUT THE BENEFIT OF A TITLE POLICY; ALL OWNERSHIP SHOWN IS BASED UPON RECORD DATA ACQUIRED AT THE TIME OF SURVEY, NO GUARANTEE IS PLACED UPON ACTUAL OWNERSHIP OF ANY PROPERTY.

EASEMENTS MAY EXIST ON SUBJECT PROPERTY THAT WOULD BE REVEALED IN A TITLE EXAMINATION.



*Samuel L. Stiltner 7/15/2021*

SAMUEL L. STILTNER  
PROFESSIONAL SURVEYOR NO. 8364  
JULY, 2021

**RETRACEMENT SURVEY**  
 LOTS 21, 22 & 23  
 LONGVIEW COVE AT INDIAN LAKE  
 PLAT CABINET B, SLIDES 125B, 126A & B  
 VIRGINIA MILITARY SURVEYS  
 12278-12311 AND 13393  
 RICHLAND TOWNSHIP  
 LOGAN COUNTY, OHIO

DRAWN BY:	DESCRIPTION	REV. NO.	DATE
KSS			7/15/2021

INDEXED ON MAP  
8748

COPYRIGHT 2021 BY:

117 N. Madriver Street • Bellefontaine, OH 43311  
 (937) 593-7335 • www.dlz.com  
 Project #2121-2106.00