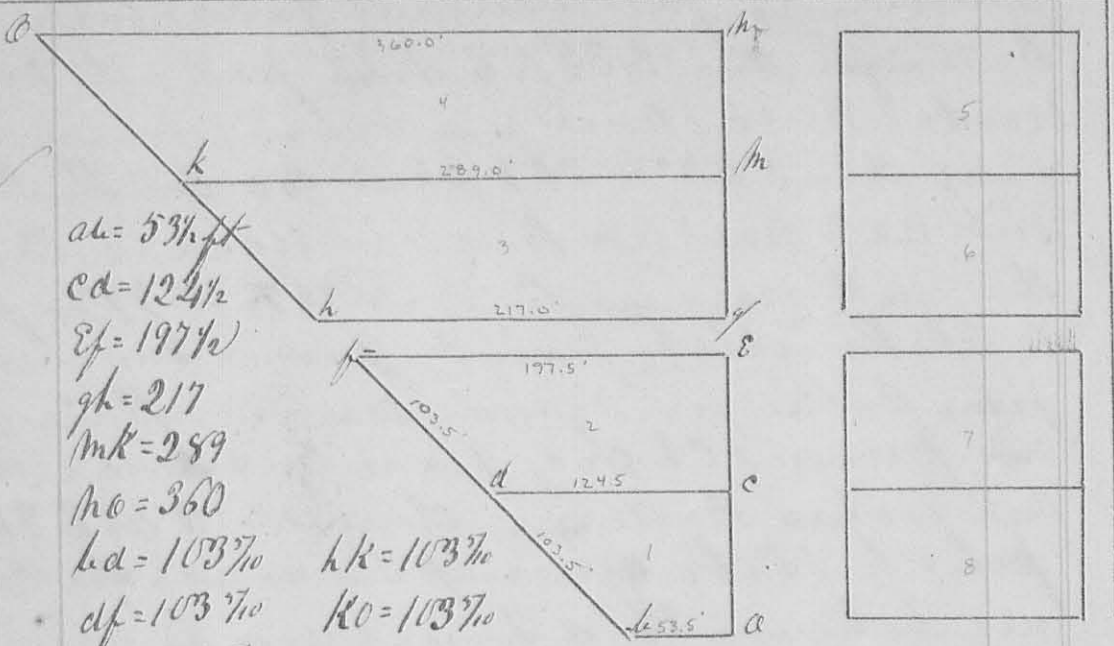


8522

Survey
563



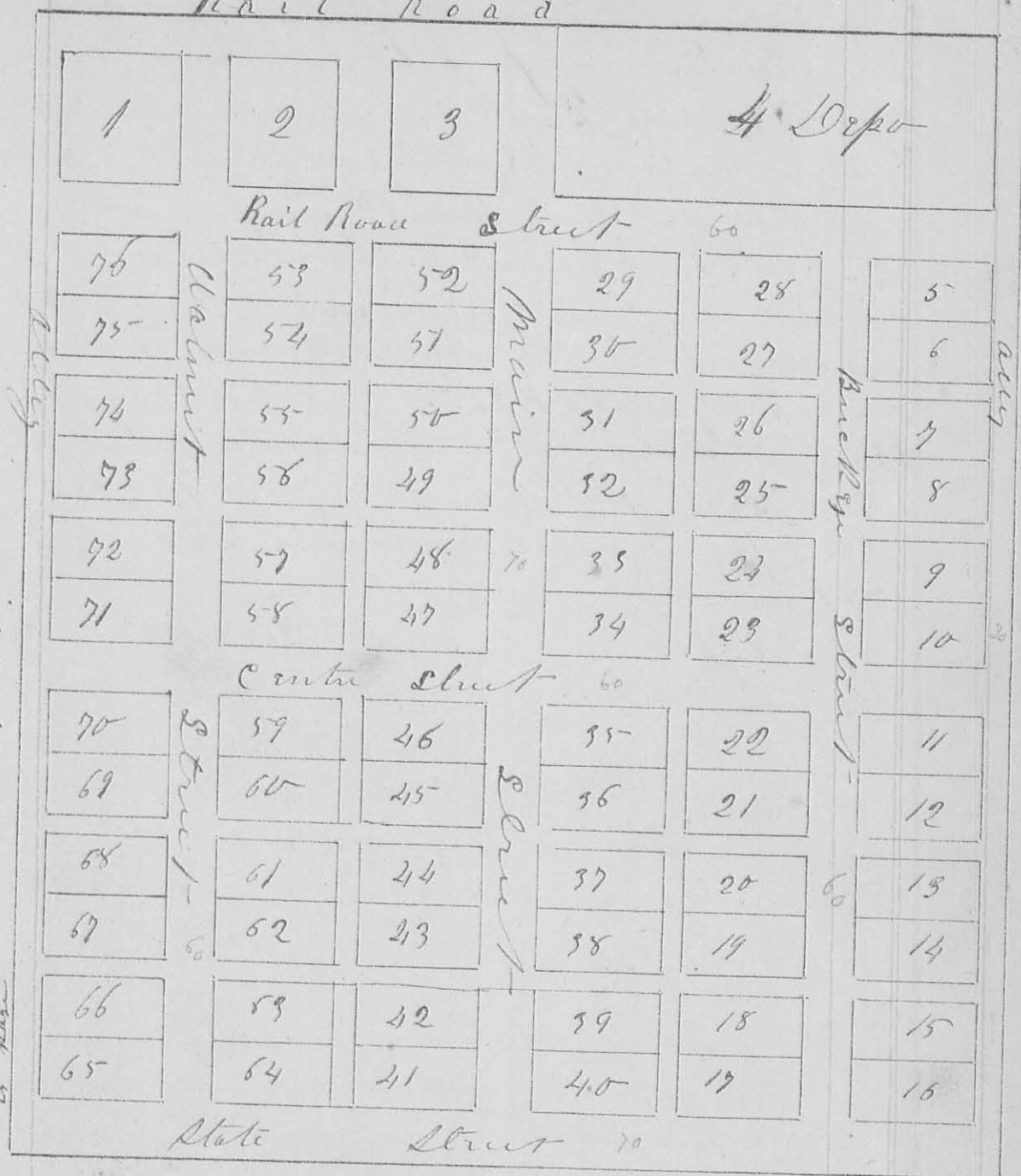
$ah = 53\frac{1}{2}$ ft
 $cd = 124\frac{1}{2}$
 $ef = 197\frac{1}{2}$
 $gh = 217$
 $mk = 289$
 $no = 360$
 $hd = 103\frac{3}{10}$ $hk = 103\frac{3}{10}$
 $df = 103\frac{3}{10}$ $ko = 103\frac{3}{10}$
 $fh = 25\frac{1}{10}$

Surveyed March 11th 1847 for Daniel Cadwin an
 Addition to the town of Bellecentu in Richland
 township Logan Co Ohio, as represented by the
 Annexed plat, Lots or 5 & 6 are each 75' in
 front and 125' feet back and front on Main
 Street Lots or 1 to 4 inclusive are each 75' feet
 wide and front on Main Street of size of 1,
 2, 3 & 4 see plat, Lots 7 & 8 are each 70' feet
 wide & 125' feet back, Main Street is 60' feet
 wide and runs at right angles with the rail road
 and is continua from Main Street of old plat
 Front Street is 10' feet wide and on the south
 side of Lot or 8 and on the North Edge of
 Rail road ground, Centre, North & East
 Alleys are each 16 1/2 feet wide

A. Harrison
 C. S. L. C. & C.

Survey
No. 5588

Rail Road



This plat being left in the proprietors hands for temporary purposes
 we as officers until its proper place of record was accomplished which

The annexed Diagram Represents the town of Bellecentrie As laid out
 in Survey No 99894 9972 in Richland township April 9 10 1846 by
 Robt Hemphill, Robt Mitchell & Daniel Colvin
 The Rail Road taken as a base line runs N 35 1/2 E,
 Lots 1, 2 & 3 bound on a line fifty feet from the Center
 of the Rail Road track, Rail Road, Center & State Streets
 run parallel with the Rail Road & are each 60 feet wide
 The four alleys running parallel to the Rail Road

74 Are each twenty feet wide, Main Street
running at right angles with the Rail Road, from
it to State Street is seventy feet wide, the lot 1 &
Buck Eye running parallel to Main Street are
each 60 ft wide, Buck Eye extends from State to
Rail road street, the alleys running parallel to
Main are each twenty-five feet wide, between
the North East & South West boundary alleys which
are each thirty feet wide, Lots 1, 2, & 3 are
large house lots, or 1 is 150×150 ft square = 22500 sqft
or 2 is $150 \times 132.5 = 19875$ sqft, or 3 is $150 \times 132.5 =$
 19875 , or 4 is 535×200 from Centre of Rail road =
 107000 sqft, Lots 5 to 76 are each 75×150 ft =
 11250 sqft, Lynn Street between Lots 2 & 3 is
60 ft wide

April 13 1846

J. A. Morrison
C. S. & Co. C

208

8522

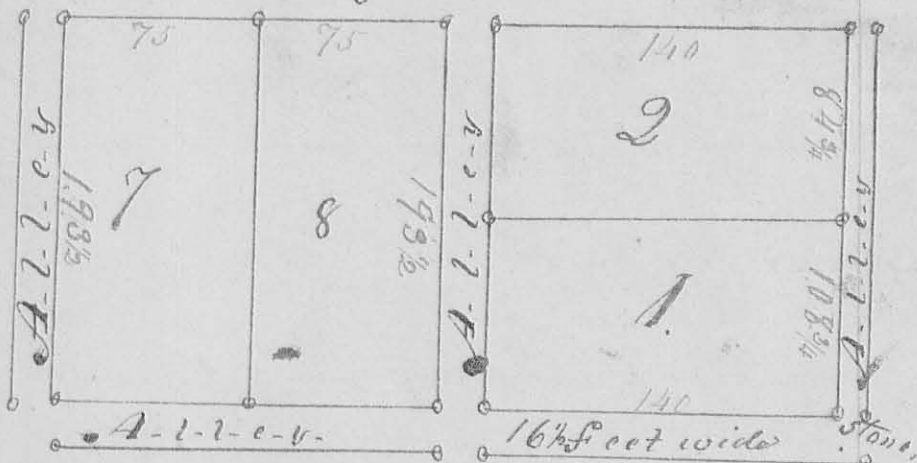
No. 698

NC

Mag. Mer.



Buckeye Street, 60 ft. wide



See at the request of Mr. Coburn the alterations on this plat were made April 28 - 1850 -

O. Hayes

The above diagram represents Coburn's 2nd pattern addition to the town of Belle-Centre Surveyed March 13th 1850 Beginning at the South ^{East} corner of Lot No. 1 at a planted stone. the bearing of said town is S 35° 00' from the North by 155 M. from the east side Lot No. 1 ^{108 3/4} ^{and 302 is 140 by 8 1/2} ^{and 74 1/2} ^{193 1/2} ^{feet by 75 feet on Buckeye Street} 150 by 70 feet Nos. 5, 6, 7, and 8 are each 150 by 75 ft. Buckeye Street is 60 feet wide and is at right angles to the Rail Road. Frontally it is 10 feet and each of the others 16 feet wide. ^{16 1/2 feet wide}

Abraham Lambert?
Joseph Peterson & Co.
Boston marker O. Hayes Sur. Geo.