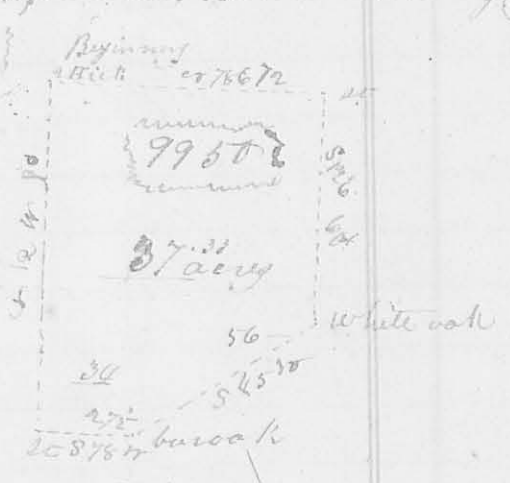


21
 Thence S 20 E, crossing Mackey's oak at 110 poles, 152 poles to the beginning
 containing one hundred acres
 William Stokes } C.C.
 Charles Mott } C.C.
 J. M. Harmon
 Surveyor of Logan Co

7th Mo (July) 8th 1824
 Surveyed 37 acres of land for James Bouyer. Beginning at a white oak
 of them is taken off the e. w. corner to Michael Bouyer's survey to 99.50
 on the Miami near Solomon's land e. r 78 E 72 poles with the north
 line of said survey to the corner of stump's land; Thence S 12 E (crossing
 a prairie) 6 poles to a white oak on a ridge
 Thence S 45 W 56 poles to a stake & bur oak
 on said ridge Thence S 78 W 27 1/2 poles
 to a stake in a prairie in the west
 line of Bouyer's said survey thence
 with said line e r 12 N 90 poles
 to the beginning containing
 thirty seven acres & thirty three poles
 William Bouyer } C.C.
 John Stump } C.C.
 J. M. Harmon
 Surveyor L.C.



8181

7th Mo 15th 1824
 Surveyed the e. w. qr of sec 8 in Town 2 Range 11 Co. M. K. for Jacob
 Keith; beginning at a stone in a field at the original corner
 of sec 8, 9, 14 & 15 Thence east 160 poles to a stake in a prairie
 thence down said prairie south 162
 poles to a white oak 17 inches in dia.
 S 72 E. 37 links dist. an elm 12 inch
 in diam e r 72 1/2 or 37 links dist.
 thence west 124 poles to a small
 buckeye on the east bank of the
 Great Miami River & a hackberry
 stands near on each side of the
 buckeye thence up the River with
 its meanders to a bot. oak corner tree standing on the bank of
 the River thence north 72 poles to the beginning containing 150 acres
 William Douglas } C.C.
 James Moore } C.C.
 J. M. Harmon
 Surveyor L.C.



8182