



Lee Surveying and Mapping Co.



Farm Surveys • Lot Surveys • Topography • Subdivisions • Construction Layout

143 EAST COLUMBUS AVENUE
BELLEFONTAINE, OHIO 43311

(513) 593-7335

JEFFREY I. LEE, P.S.

EXHIBIT 'A'

Lying in Virginia Military Survey 9968, Richland Township, Logan County, Ohio.

Being all of those four Lakelands tracts (0.077 acre, 1.111 acre, 0.001 acre, and 0.305 acre) in the name of O'Connor's Landing, Inc., an Ohio Corporation, as deeded and described in Official Record 192, Page 733, all of the remainder of that original 18.58 acre tract and that 2.39 acre tract in the name of O'Connor's Landing, Inc., an Ohio Corporation, as deeded and described in Volume 353, Page 659, Parcel II, and, also, part of that original 130 acre tract in the name of O'Connor Farms, Inc., an Ohio Corporation, as deeded and described in Volume 353, Page 663, Tract VI, with all references being to the Logan County Records of Deeds and being more particularly described as follows:

Beginning at a 5/8 inch iron bar set at the northeast corner of Lot No. 11, O'Connor's Allotment No. 2, Richland Township, Logan County, Ohio as recorded in Plat Cabinet A, Slide 237, in the Logan County Recorder's Office.

THENCE, N 13°-08'-47" E, with the westerly right-of-way line extended of Breezy Way, said westerly right-of-way line being the east line of the Richard Steinmetz tract (O.R. 185, Pg. 624), a distance of 70.30 feet to the a 5/8 inch iron bar set at the northeast corner of the said Steinmetz real estate.

THENCE, N 76°-51'-05" W, with the north line of the said Steinmetz real estate 107.91 feet to the edge of the water, passing a 5/8 inch iron bar set for reference at 77.77 feet.

THENCE, with the edge of the water the following eleven courses:

N 7°-48'-32" E, a distance of 17.19 feet.

N 6°-12'-41" E, a distance of 18.26 feet.

N 3°-41'-21" W, a distance of 52.33 feet.

N 11°-07'-59" W, a distance of 7.62 feet.

N 1°-50'-26" W, a distance of 24.86 feet.

N 9°-38'-20" E, a distance of 9.73 feet.

N 23°-07'-52" E, a distance of 10.30 feet.

N 29°-08'-41" E, a distance of 10.02 feet.

N 24°-24'-30" E, a distance of 27.11 feet.

N 3°-27'-24" W, a distance of 25.27 feet.

N 60°-06'-20" E, a distance of 58.08 feet to the intersection of the said State Property Line and the edge of the water.

THENCE, continuing with the State Property Line, N 31°-27'-44" E, a distance of 18.12 feet to the edge of the water.

INDEXED ON MAP
7011

1D-1

THENCE, with the edge of the water the following thirty-eight courses:

N 7°-02'-48" W, a distance of 53.57 feet.
N 44°-53'-23" W, a distance of 24.90 feet.
N 81°-42'-53" W, a distance of 58.09 feet.
S 75°-23'-57" W, a distance of 18.00 feet.
N 20°-31'-39" W, a distance of 87.92 feet.
N 85°-12'-10" W, a distance of 7.22 feet.
N 14°-27'-07" W, a distance of 64.26 feet.
N 12°-02'-31" W, a distance of 16.38 feet.
N 11°-49'-13" W, a distance of 98.70 feet.
S 85°-26'-52" W, a distance of 1.70 feet.
N 14°-01'-23" W, a distance of 48.15 feet.
N 18°-03'-37" W, a distance of 48.20 feet.
N 24°-41'-02" W, a distance of 184.63 feet.
N 28°-49'-41" E, a distance of 24.83 feet.
N 62°-00'-10" E, a distance of 16.74 feet.
S 88°-23'-17" E, a distance of 16.09 feet.
S 81°-19'-20" E, a distance of 90.19 feet.
S 76°-48'-46" E, a distance of 47.79 feet.
S 32°-05'-30" E, a distance of 4.26 feet.
S 77°-59'-27" E, a distance of 26.45 feet.
N 38°-05'-40" E, a distance of 4.78 feet.
S 86°-17'-56" E, a distance of 64.42 feet.
S 75°-54'-15" E, a distance of 64.44 feet.
S 47°-28'-53" E, a distance of 40.89 feet.
S 13°-15'-37" E, a distance of 51.18 feet.
S 1°-32'-31" W, a distance of 6.40 feet.
S 19°-47'-24" W, a distance of 15.40 feet.
S 21°-33'-17" W, a distance of 12.10 feet.
S 56°-22'-06" E, a distance of 35.90 feet.
S 72°-11'-30" E, a distance of 13.87 feet.
N 85°-29'-26" E, a distance of 15.46 feet.
N 69°-11'-03" E, a distance of 31.50 feet.
N 50°-12'-16" E, a distance of 8.90 feet.
N 57°-17'-35" E, a distance of 75.62 feet.
N 19°-48'-54" E, a distance of 12.93 feet.
N 40°-10'-51" W, a distance of 8.51 feet.
N 45°-55'-26" E, a distance of 95.14 feet.
N 48°-49'-22" E, a distance of 2.23 feet to the southwesterly corner of Lot 13 of the Marysville Allotment.

THENCE, with the southerly line of Lot 13, and the south line of the Robert E. Mosier 0.103 acre tract (O.R. 193, Pg. 475), and crossing County Highway 254, S 57°-34'-29" E, a distance of 279.50 feet to a concrete monument set 30.00 feet easterly at right angles from the center-line of County Highway 254, passing a concrete monument set for reference at 31.27 feet.

THENCE, parallel to and 30.00 feet easterly from the center-line of County Highway 254, passing along the west line of the O'Connor's Farm, Inc. 0.434 acre tract (O.R. 193, Pg. 732), S 32°-05'-58" W, a distance of 87.99 feet to a 5/8 inch iron rod set at the point of curvature of a non-tangent curve.

THENCE, parallel to and 30.00 feet distant from the center-line of County Highway 254, southerly along said curve, concave to the east, having a radius of 864.58 feet, a central angle of 39°-56'-22", and a chord distance of 590.55 feet bearing S 12°-07'-53" W, an arc distance of 602.68 feet to a concrete monument set.

THENCE, parallel to and 30.00 feet distant from the center-line of County Highway 254, S 7°-50'-24" E, a distance of 727.68 feet to a concrete monument set.

THENCE, S 82°-09'-36" W, a distance of 60.00 feet to a 5/8 inch iron bar set on the proposed west right-of-way of County Highway 254.

THENCE, with a westerly line of the O'Connor's Farm, Inc. 0.472 acre tract (O.R. 193, Pg. 732), S 31°-01'-55" W, a distance of 200.11 feet to a 5/8 inch iron bar found.

THENCE, continuing with a westerly line of the said 0.472 acre tract, S 44°-37'-21" W, a distance of 83.71 feet to the present shore line of Indian Lake, passing a 5/8 inch iron bar set at 74.19 feet.

THENCE, with said shore line, N 46°-23'-40" W, a distance of 49.35 feet to a point.

THENCE, with said shore line, N 70°-32'-25" W, a distance of 41.90 feet to a point.

THENCE, with said shore line, N 67°-58'-20" W, a distance of 46.93 feet to a point.

THENCE, N 66°-37'-40" W, a distance of 27.63 feet to a point that is 116 feet left of station 230+48.2 of the Wonders Field Book #5 as surveyed by James C. Wonders in 1892.

THENCE, N 33°-35'-15" W, a distance of 68.11 feet to a point on the existing shore line of said Indian Lake.

THENCE, with said shore line, N 44°-02'-45" E, a distance of 13.58 feet to a point.

THENCE, with said shore line, N 41°-38'-45" W, a distance of 40.12 feet to a point.

1D-3

EXHIBIT 'A' Page 3 of Four

INDEXED ON MAP

7011

THENCE, with said shore line, N 30°-45'-50" W, a distance of 27.92 feet to a point.

THENCE, with said shore line, N 35°-24'-50" W, a distance of 17.24 feet to a point.

THENCE, with said shore line, N 61°-50'-25" W, a distance of 17.33 feet to a point in the projection of the easterly line of the aforementioned Breezy Way.

THENCE, with said projection and the easterly line of said Breezy Way, N 15°-10'-47" W, a distance of 251.56 feet to a 5/8 inch iron bar set, passing a 5/8 inch iron bar set at 10.00 feet and a concrete monument set for reference at 176.47 feet.

THENCE, with the easterly line of Breezy Way, N 13°-08'-47" E, a distance of 384.75 feet to a 5/8 inch iron bar set at the northeast corner of existing Breezy Way as platted in the aforesaid O'Connor's Allotment No. 2.

THENCE, with the north line of Breezy Way, N 77°-03'-58" W, a distance of 30.00 feet to the POINT OF BEGINNING.

Containing 18.393 acres of which there is the following acreage breakdown:

0.804 acre is out of the O'Connor Farm, Inc. original 130.0 acre tract of which 0.683 acre is within the present highway right-of-way (50 feet wide).

14.139 acres are out of the O'Connor's Landing, Inc. original 18.58 acre tract of which 0.444 acre is within the present highway right-of-way.

1.956 acres are out of the O'Connor's Landing, Inc. original 2.39 acre tract of which there are 0.525 acre within the highway right-of-way.

1.494 acres remainder include all of the aforementioned four O'Connor's Landing, Inc. Lakelands tracts.

The basis for bearings is based upon the south line of Lot 13 of the Marysville Allotment being S 57°-34'-29" E, and all other bearings are from record and field data supplied by others.

1D-4

ED ON MAP
7011



Description prepared by:

Jeffrey I. Lee

Jeffrey I. Lee
Professional Surveyor 6359
June 22, 1993

L 2053

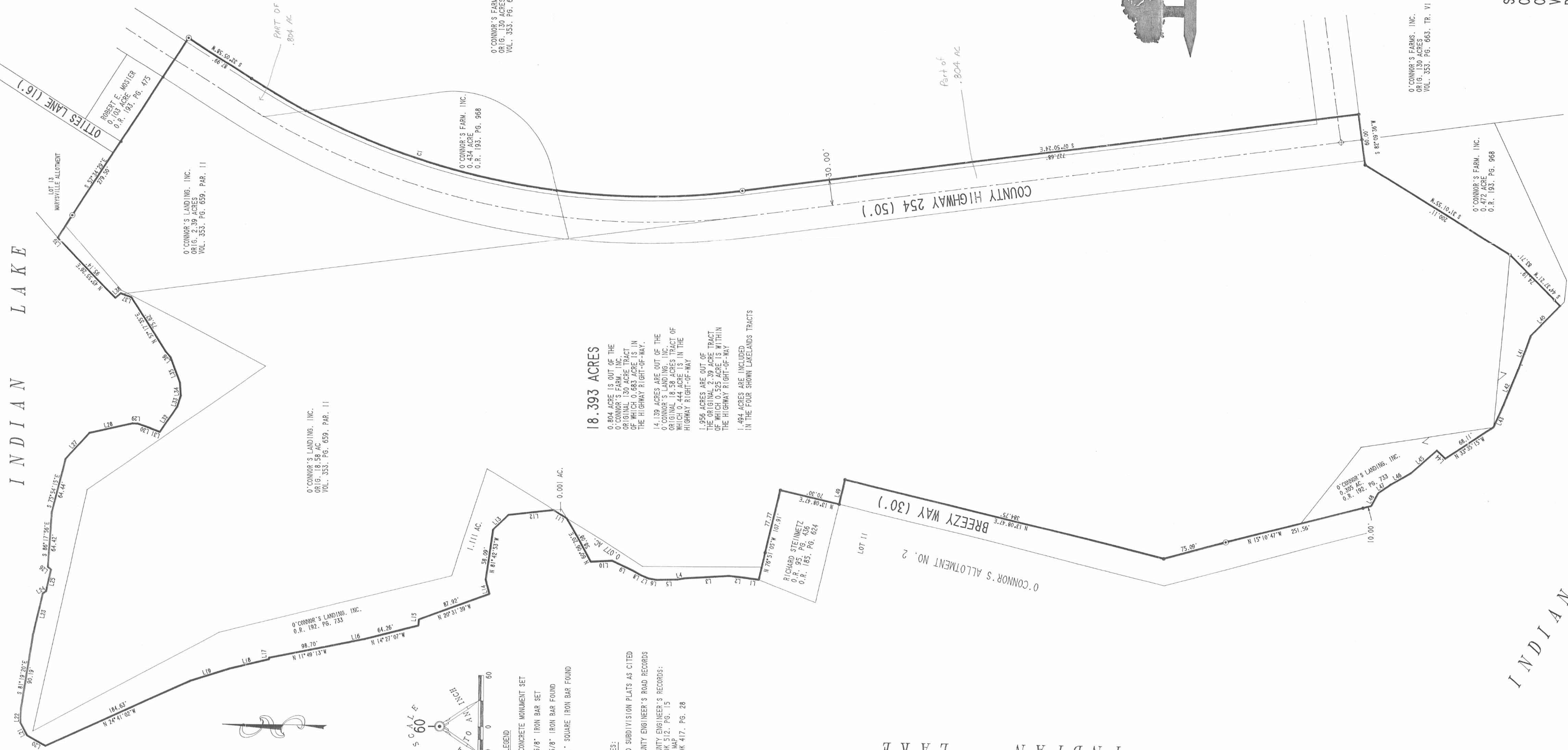
EXHIBIT 'A' Page 4 of Four

ORIGINAL STAMP IN GREEN

INDIAN LAKE

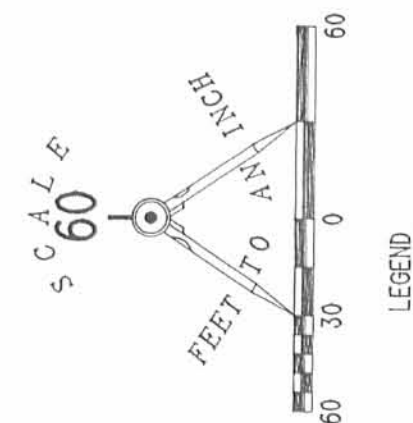
CURVE DELTA ANGLE 39°58'22" RADIUS 864.38' ARC TANGENT 314.17' CHORD 590.35' CHORD BEARING 127°07'33"W

LINE	BEARING	DISTANCE	LINE	BEARING	DISTANCE
L 1	N 07°48'32"E	17.19'	L 26	N 30°05'40"E	4.78'
L 2	N 09°12'41"E	18.26'	L 27	S 47°28'33"E	40.89'
L 3	N 10°07'59"W	15.25'	L 28	S 01°32'31"E	51.18'
L 4	N 11°00'59"W	7.65'	L 29	S 19°47'24"W	15.40'
L 5	N 01°50'29"W	24.86'	L 30	S 21°33'17"W	12.10'
L 6	N 09°38'20"E	9.73'	L 31	S 56°22'06"E	35.80'
L 7	N 29°07'32"E	10.39'	L 32	S 72°11'20"E	13.87'
L 8	N 29°08'41"E	10.02'	L 33	N 89°29'20"E	15.46'
L 9	N 09°08'41"E	25.11'	L 34	N 09°12'14"E	9.19'
L 10	N 03°27'24"W	25.37'	L 35	N 50°12'14"E	11.90'
L 11	N 31°27'44"E	16.12'	L 36	N 19°48'54"E	12.83'
L 12	N 07°02'48"W	53.57'	L 37	N 49°10'51"W	8.51'
L 13	N 44°53'23"W	24.90'	L 38	N 46°49'22"E	2.23'
L 14	S 75°23'57"W	18.00'	L 39	N 46°23'50"W	49.35'
L 15	N 85°12'10"W	7.22'	L 40	N 07°32'26"W	41.90'
L 16	S 85°26'32"W	11.70'	L 41	N 07°32'26"W	41.90'
L 17	N 47°01'23"W	48.15'	L 42	N 60°37'40"W	27.63'
L 18	N 18°03'37"W	48.20'	L 43	N 44°02'45"E	13.58'
L 19	N 28°49'41"E	24.83'	L 44	N 30°45'59"W	27.92'
L 20	N 62°00'10"E	16.74'	L 45	N 30°45'59"W	17.24'
L 21	N 62°00'10"E	16.74'	L 46	N 32°05'30"E	4.28'
L 22	N 62°00'10"E	16.74'	L 47	N 32°05'30"E	4.28'
L 23	S 32°05'30"E	4.28'	L 48	N 77°04'59"W	30.90'
L 24	S 32°05'30"E	4.28'	L 49	N 77°04'59"W	30.90'
L 25	S 77°59'27"E	26.45'			

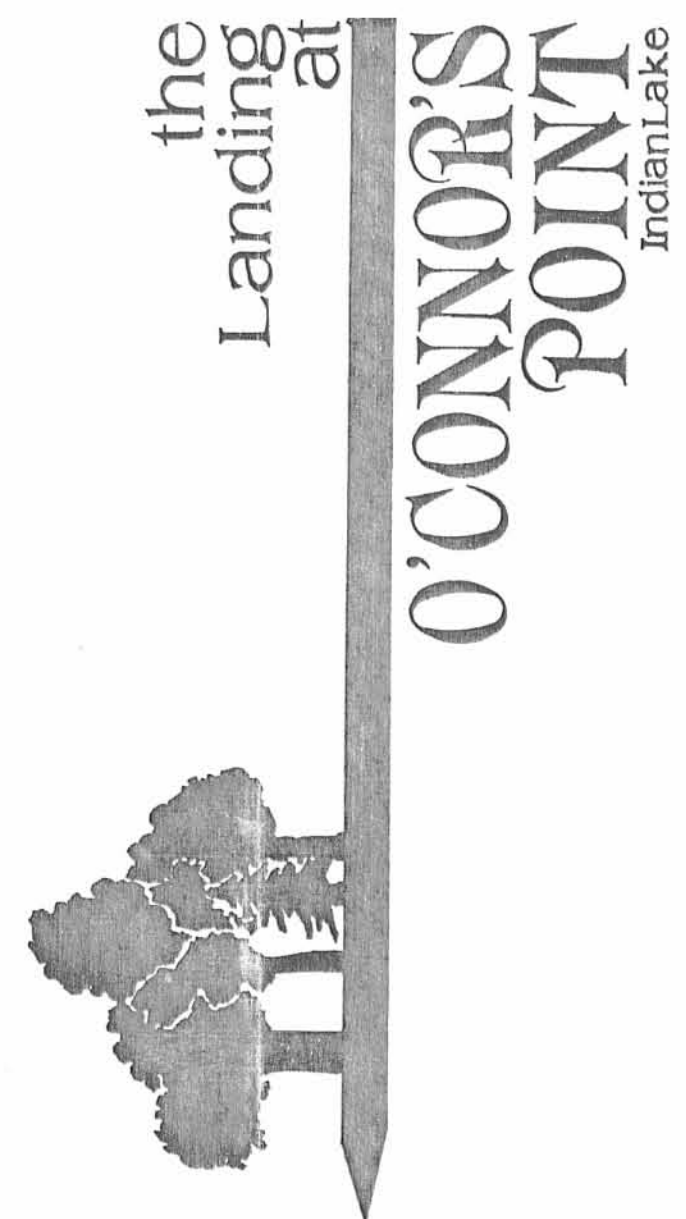


18.393 ACRES
 0.804 ACRE IS OUT OF THE ORIGINAL 130 ACRE TRACT OF WHICH 0.682 ACRES IS IN THE HIGHWAY RIGHT-OF-WAY.
 14.139 ACRES ARE OUT OF THE O'CONNOR'S LANDING, INC. ORIGINAL 14.393 ACRES TRACT OF WHICH 14.300 ACRES IS IN THE HIGHWAY RIGHT-OF-WAY.
 1.956 ACRES ARE OUT OF THE ORIGINAL 2.000 ACRES TRACT OF WHICH 1.045 ACRES IS WITHIN THE HIGHWAY RIGHT-OF-WAY.
 1.494 ACRES ARE INCLUDED IN THE FOUR SHOWN LAKELANDS TRACTS

REFERENCES:
 DEEDS AND SUBDIVISION PLATS AS CITED
 LOGAN COUNTY ENGINEER'S ROAD RECORDS
 LOGAN COUNTY ENGINEER'S RECORDS:
 FIELD BOOK 512, PG. 15
 1880, TAX MAP
 FIELD BOOK 417, PG. 28



- LEGEND:**
- ⊙ CONCRETE MONUMENT SET
 - 5/8" IRON BAR SET
 - 5/8" IRON BAR FOUND
 - ⊕ 1" SQUARE IRON BAR FOUND



SURVEY OF 18.393 ACRES FOR
 O'CONNOR'S LANDING, INC. AND
 O'CONNOR'S FARM, INC.
 VIRGINIA MILITARY SURVEY 9968
 RICHLAND TOWNSHIP
 LOGAN COUNTY, OHIO



SURVEYED BY:
Leslie H. Geslin
 LESLIE H. GESLIN
 PROFESSIONAL SURVEYOR 5248
 APRIL 2, 1993

INDEXED ON MAP
 T.C.11

CALCULATIONS AND PLATTING SERVICES BY:
LEE SURVEYING & MAPPING CO.
 10000 W. Belmont Avenue
 Bellefontaine, OH 43111
 (513) 593-7335
 D. 208 OCONSTRM L 2053-1

Received 4-22-93 OK gch



Lee Surveying and Mapping Co.



Farm Surveys • Lot Surveys • Topography • Subdivisions • Construction Layout

143 EAST COLUMBUS AVENUE
BELLEFONTAINE, OHIO 43311

(513) 593-7335

JEFFREY I. LEE, P.S.

O'CONNOR'S Reservoir Lands Parcel 68-1S

Lying in Virginia Military Survey 9968, Richland Township, Logan County, Ohio.

Being all of that tract of land as identified as Lake Lands Parcel 68-1S on sheet 2 of 9, titled, "INDIAN LAKE, LOGAN COUNTY, RICHLAND TOWNSHIP, O'CONNOR POINT AREA, PROPERTY/PLANIMETRIC" and dated 9-1-78, as filed in the Logan County Engineer's Map Room and being more particularly described as follows:

Beginning at the northeast corner of Lot No. 11, O'Connor's Allotment No. 2, Richland Township, Logan County, Ohio as recorded in Plat Cabinet A, Slide 237, in the Logan County Recorder's Office.

THENCE, N 13°-08'-47" E, with the westerly right-of-way line extended of Breezy Way, said westerly right-of-way line being the east line of that real estate transferred to George E. Steinmetz and Elsie L. Steinmetz, as recorded in Deed Book 195, Page 540, a distance of 70.30 feet to the northeast corner of the said Steinmetz real estate.

THENCE, N 76°-51'-05" W, with the north line of the said Steinmetz real estate 92.47 feet to the intersection of the said north line of the Steinmetz real estate and the Property Line of the State of Ohio and being the 50 feet contour line as determined by the J.C. Wonders Survey dated 1892.

THENCE, N 0°-15'-21" W, with the said State Property Line, a distance of 140.34 feet.

THENCE, N 31°-29'-11" E, with the said State Property Line, a distance of 105.04 feet to the edge of the water and the TRUE POINT OF BEGINNING.

THENCE, continuing with the State Property Line, N 31°-27'-44" E, a distance of 18.12 feet to the edge of the water.


THENCE, with the edge of the water, S 7°-06'-22" E, a distance of 9.43 feet.

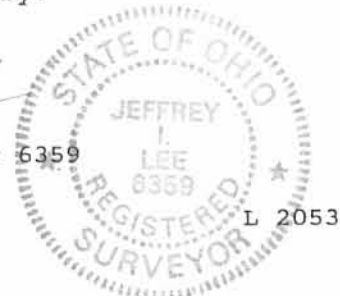
THENCE, with the edge of the water, S 60°-08'-35" W, a distance of 12.25 feet to the point of beginning.

Containing an area of 53 square feet or 0.001 acre.

The basis for bearings is based upon the south line of Lot 13 of the Marysville Allotment being S 57°-34'-29" E, and all other bearings are from record and field data supplied by others.

Description prepared by:


Jeffrey I. Lee
Professional Surveyor 6359
April 21, 1993



ORIGINAL STAMP IN GREEN

INDEXED ON MAP
7011

2D-1



Lee Surveying and Mapping Co.



Farm Surveys • Lot Surveys • Topography • Subdivisions • Construction Layout

143 EAST COLUMBUS AVENUE
BELLEFONTAINE, OHIO 43311

(513) 593-7335

JEFFREY I. LEE, P.S.

O'CONNOR'S Reservoir Lands Parcel 68-2A

Lying in Virginia Military Survey 9968, Richland Township, Logan County, Ohio.

Being all of that tract of land as identified as Lake Lands Parcel 68-2A on sheet 2 of 9, titled, "INDIAN LAKE, LOGAN COUNTY, RICHLAND TOWNSHIP, O'CONNOR POINT AREA, PROPERTY/PLANIMETRIC" and dated 9-1-78, as filed in the Logan County Engineer's Map Room and being more particularly described as follows:

Beginning at the northeast corner of Lot No. 11, O'Connor's Allotment No. 2, Richland Township, Logan County, Ohio as recorded in Plat Cabinet A, Slide 237, in the Logan County Recorder's Office.

THENCE, N 13°-08'-47" E, with the westerly right-of-way line extended of Breezy Way, said westerly right-of-way line being the east line of that real estate transferred to George E. Steinmetz and Elsie L. Steinmetz, as recorded in Deed Book 195, Page 540, a distance of 70.30 feet to the northeast corner of the said Steinmetz real estate.

THENCE, N 76°-51'-05" W, with the north line of the said Steinmetz real estate 92.47 feet to the THE TRUE POINT OF BEGINNING at intersection of the said north line of the Steinmetz real estate and the Property Line of the State of Ohio and being the 50 feet contour line as determined by the J.C. Wonders Survey dated 1892.

THENCE, continuing N 76°-51'-05" W, along the said north line of the Steinmetz real estate, 15.43 feet to the edge of the water.

THENCE, with the edge of the water the following eleven courses:

N 7°-48'-32" E, a distance of 17.19 feet.

N 6°-12'-41" E, a distance of 18.26 feet.

N 3°-41'-21" W, a distance of 52.33 feet.

N 11°-07'-59" W, a distance of 7.62 feet.

N 1°-50'-26" W, a distance of 24.86 feet.

N 9°-38'-20" E, a distance of 9.73 feet.

N 23°-07'-52" E, a distance of 10.30 feet.

N 29°-08'-41" E, a distance of 10.02 feet.

N 24°-24'-30" E, a distance of 27.11 feet.

N 3°-27'-24" W, a distance of 25.27 feet.

N 60°-06'-20" E, a distance of 58.08 feet to the intersection of the said State Property Line and the edge of the water.

THENCE, S 31°-29'-11" W, with the said State Property Line, a distance of 105.04 feet.

THENCE, S 0°-15'-21" E, with the said State Property Line, a distance of 140.34 feet to the point of beginning.

Containing an area of 3374 square feet or 0.077 acre.

The basis for bearings is based upon the south line of Lot 13 of the Marysville Allotment being S 57°-34'-29" E, and all other bearings are from record and field data supplied by others.

Description prepared by:

Jeffrey I. Lee
Professional Surveyor 6359
April 21, 1993



FIELD ON MAP
7011

2D-2

ORIGINAL STAMP IN GREEN



Lee Surveying and Mapping Co.



Farm Surveys • Lot Surveys • Topography • Subdivisions • Construction Layout

143 EAST COLUMBUS AVENUE
BELLEFONTAINE, OHIO 43311

(513) 593-7335

JEFFREY I. LEE, P.S.

O'CONNOR'S Reservoir Lands Parcel 68-3A

Lying in Virginia Military Survey 9968, Richland Township, Logan County, Ohio.

Being all of that tract of land as identified as Lake Lands Parcel 68-3A on sheet 3 of 9, titled, "INDIAN LAKE, LOGAN COUNTY, RICHLAND TOWNSHIP, O'CONNOR POINT AREA, PROPERTY/PLANIMETRIC" and dated 9-1-78, as filed in the Logan County Engineer's Map Room and being more particularly described as follows:

Beginning at the southeasterly corner of Lot No. 13, Marysville Allotment, Richland Township, Logan County, Ohio as recorded in Plat Cabinet A, Slide 135, in the Logan County Recorder's Office.

THENCE, N 57°-34'-29" W, with the southerly line of said Lot No. 13, a distance of 101.91 feet to the TRUE POINT OF BEGINNING at the intersection of the said southerly line of Lot 13 and the State of Ohio Property Line and being the 50 feet contour line as determined by the J.C. Wonders Survey dated 1892.

THENCE, with the State Property Line the following eight courses:

- S 48°-36'-36" W, a distance of 99.77 feet.
- S 27°-16'-26" W, a distance of 190.76 feet.
- N 35°-19'-00" W, a distance of 254.92 feet.
- N 77°-53'-11" W, a distance of 289.45 feet.
- S 28°-35'-04" E, a distance of 246.03 feet.
- S 14°-19'-12" E, a distance of 281.35 feet.
- S 72°-03'-07" E, a distance of 132.20 feet.
- S 31°-27'-44" W, a distance of 92.09 feet to the edge of the water.

THENCE, with the edge of the water the following thirty-eight courses:

- N 7°-02'-48" W, a distance of 53.57 feet.
- N 44°-53'-23" W, a distance of 24.90 feet.
- N 81°-42'-53" W, a distance of 58.09 feet.
- S 75°-23'-57" W, a distance of 18.00 feet.
- N 20°-31'-39" W, a distance of 87.92 feet.
- N 85°-12'-10" W, a distance of 7.22 feet.
- N 14°-27'-07" W, a distance of 64.26 feet.
- N 12°-02'-31" W, a distance of 16.38 feet.
- N 11°-49'-13" W, a distance of 98.70 feet.
- S 85°-26'-52" W, a distance of 1.70 feet.
- N 14°-01'-23" W, a distance of 48.15 feet.
- N 18°-03'-37" W, a distance of 48.20 feet.
- N 24°-41'-02" W, a distance of 184.63 feet.
- N 28°-49'-41" E, a distance of 24.83 feet.
- N 62°-00'-10" E, a distance of 16.74 feet.
- S 88°-23'-17" E, a distance of 16.09 feet.
- S 81°-19'-20" E, a distance of 90.19 feet.
- S 76°-48'-46" E, a distance of 47.79 feet.
- S 32°-05'-30" E, a distance of 4.26 feet.
- S 77°-59'-27" E, a distance of 26.45 feet.
- N 38°-05'-40" E, a distance of 4.78 feet.
- S 86°-17'-56" E, a distance of 64.42 feet.
- S 75°-54'-15" E, a distance of 64.44 feet.
- S 47°-28'-53" E, a distance of 40.89 feet.
- S 13°-15'-37" E, a distance of 51.18 feet.
- S 1°-32'-31" W, a distance of 6.40 feet.
- S 19°-47'-24" W, a distance of 15.40 feet.
- S 21°-33'-17" W, a distance of 12.10 feet.
- S 56°-22'-06" E, a distance of 35.90 feet.
- S 72°-11'-30" E, a distance of 13.87 feet.
- N 85°-29'-26" E, a distance of 15.46 feet.
- N 69°-11'-03" E, a distance of 31.50 feet.
- N 50°-12'-16" E, a distance of 8.90 feet.
- N 57°-17'-35" E, a distance of 75.62 feet.

INDEXED ON MAP
7011

2D-3

N 19°-48'-54" E, a distance of 12.93 feet.

N 40°-10'-51" W, a distance of 8.51 feet.

N 45°-55'-26" E, a distance of 95.14 feet.

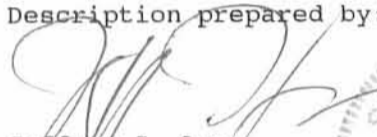
N 48°-49'-22" E, a distance of 2.23 feet to the southwesterly corner of
aforementioned Lot 13.

THENCE, with the southerly line of Lot 13, S 57°-34'-29" E, a distance of
16.59 feet to the point of beginning.

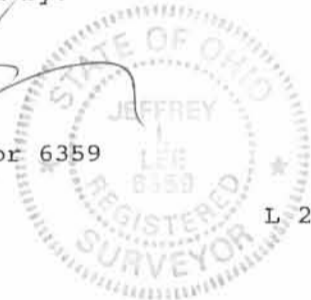
Containing an area of 48390 square feet or 1.111 Acres

The basis for bearings is based upon the south line of Lot 13 of the
Marysville Allotment being S 57°-34'-29" E, and all other bearings are from record
and field data supplied by others.

Description prepared by:



Jeffrey I. Lee
Professional Surveyor 6359
April 21, 1993



L 2053

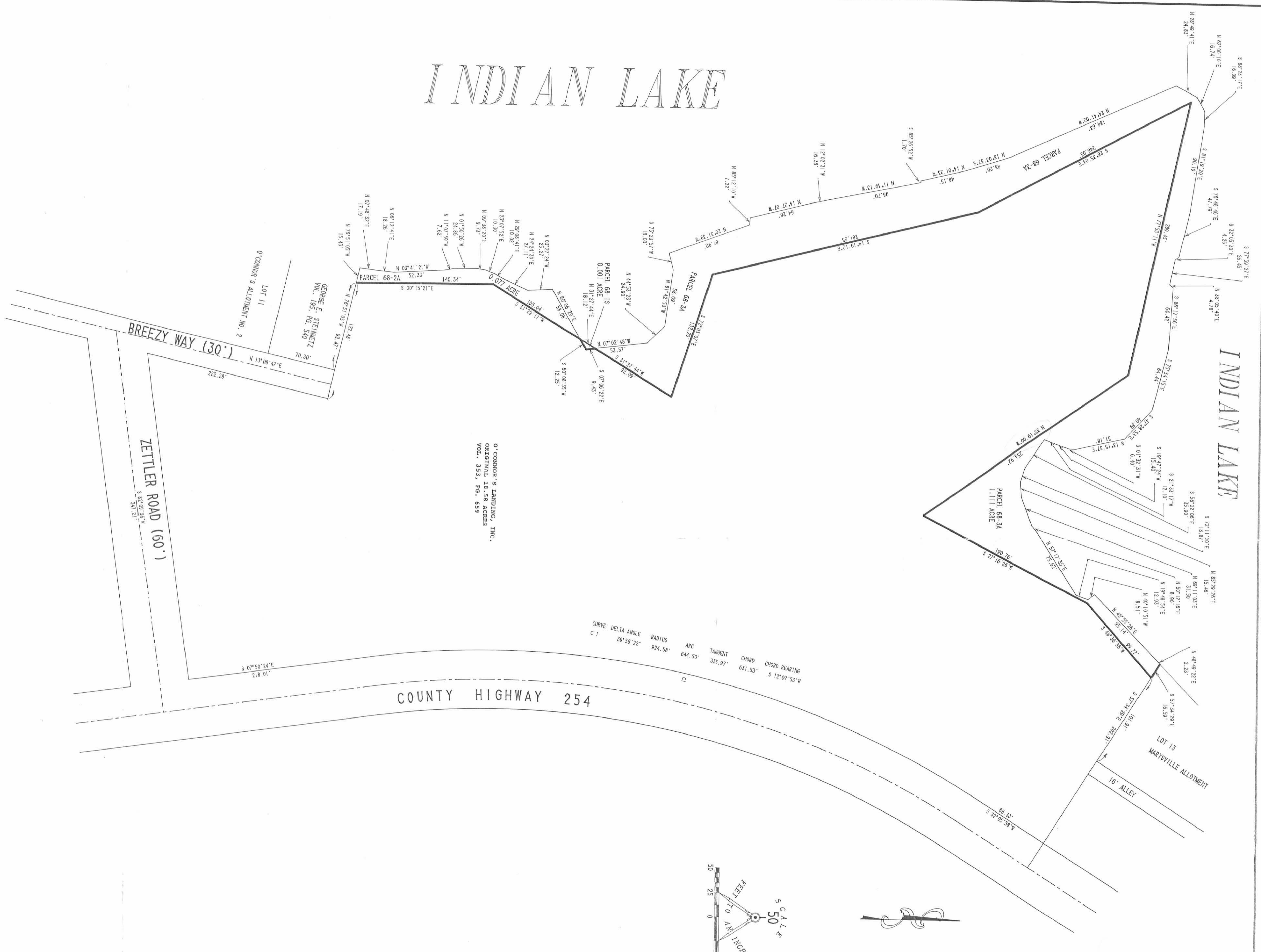
ORIGINAL STAMP IN GREEN

INDEXED ON MAP
7011

2D-4

INDIAN LAKE

INDIAN LAKE



REFERENCES:
 LOGAN COUNTY RECORDER'S RECORDS:
 MARYSVILLE ALLOTMENT - PLAT CABINET A, SLIDE 135
 O'CONNOR'S ALLOTMENT NO. 2 - PLAT CABINET A, SLIDE 237
 OHIO RESERVOIR LANDS SURVEY PLATS
 BY KOHLI & KALLHER ASSOC., LIMITED - 10 MAPS
 LES GESLIN, P.S. FIELD NOTES OF SURVEY

PLAT OF STATE OF OHIO LAKE LANDS
 LOTS 68-1S, 68-2A, AND 68-3A
 VIRGINIA MILITARY SURVEY 9968
 RICHLAND TOWNSHIP
 LOGAN COUNTY, OHIO

ORIGINAL STAMP IN GREEN
 STATE OF OHIO
 REGISTERED SURVEYOR
 JEFFREY L. LEE
 REG. NO. 6358
 APRIL 21, 1993
 LEE SURVEYING & MAPPING CO.
 143 EAST COLUMBUS AVENUE
 BELLEFONTAINE, OHIO 43111
 (613) 593-7335

PLATTED FROM RECORDS AND FIELD SURVEY NOTES BY OTHERS:
 JEFFREY L. LEE
 PROFESSIONAL SURVEYOR 6359
 APRIL 21, 1993
 LEE SURVEYING & MAPPING CO.
 143 EAST COLUMBUS AVENUE
 BELLEFONTAINE, OHIO 43111
 (613) 593-7335

2 WORKING DAYS
 BEFORE YOU DIG
 CALL TOLL FREE 800-382-2764
 OR VISIT US ONLINE AT WWW.DIGNOTICE.COM

Received 8-31-94 of gch

LESLIE H. GEESLIN

REGISTERED SURVEYOR 5248

P. O. BOX 274

RUSHSVLVANIA, OHIO 43347

TELEPHONE: (513) 468-2793

O'CONNOR SURVEY

August 26, 1994

The following described real estate situated in the State of Ohio, County of Logan, Township of Richland, being part of Virginia Military Survey 9968 and more particularly described as follows:

Beginning at a 5/8 inch iron bar found in the west right of way of County Highway 254 at the southeast corner of Lot 26 in O'Connor's Point Allotment No. 1.

Thence with said right of way S. 7° 50' 24" E. 79.67 feet to a 5/8 inch iron bar found at the northwest corner of O'Connor's Farm, Inc.'s 0.472 acre tract as described in O. R. Vol. 193 Page 732.

Thence with the west line of said O'Connor's Farm S. 31° 01' 55" W. 200.11 feet to a 5/8 inch iron bar found.

Thence continuing with said west line S. 44° 37' 21" W. 83.71 feet to a point in the shoreline of Indian Lake, passing a 5/8 inch iron bar found at 74.19 feet.

Thence with said shoreline N. 46° 23' 44" W. 49.36 feet to a point that is S. 34° 22' 46" E. 11.46 feet from a 5/8 inch iron bar set.

Thence again with said shoreline N. 70° 32' 25" W. 41.90 feet to a point that is N. 84° 24' 39" W. 46.20 feet from a 5/8 inch iron bar set.

Thence continuing with said shoreline N. 67° 58' 19" W. 46.92 feet to a point that is S. 20° 48' 46" E. 37.96 feet from a 5/8 inch iron bar set.

Thence continuing with said shoreline N. 66° 37' 37" W. 27.63 feet to a point that is S. 25° 50' 09" W. 27.25 feet from a 5/8 inch iron bar set.

Thence continuing with said shoreline N. 33° 35' 15" W. 68.11 feet to a point that is N. 56° 58' 19" W. 59.10 feet from a 5/8 inch iron bar set.

Thence continuing with said shoreline N. 44° 02' 43" E. 13.58 feet to a point that is S. 31° 05' 04" W. 21.37 feet from a 5/8 inch iron bar set.

Thence continuing with said shoreline N. 41° 38' 43" W. 40.12 feet to a point that is N. 72° 46' 59" W. 39.46 feet from a 5/8 inch iron bar set.

Thence continuing with said shoreline N. 30° 45' 47" W. 27.92 feet to a point that is S. 21° 24' 29" E 26.43 feet from a 5/8 inch iron bar set.

RIA:\07\OCONNOR.SAM



3D-1

Thence continuing with said shoreline N. 35° 24' 50" W. 17.24 feet to a point that is S. 1° 51' 09" W. 10.56 feet from a 5/8 inch iron bar set.

Thence continuing with said shoreline N. 61° 51' 13" W. 17.34 feet to a point at the southeast corner of Breezy Way that is S. 15° 10' 47" E. 10.00 feet from a 5/8 inch iron bar found.

Thence with the east line of said Breezy Way N. 15° 10' 47" W. 176.47 feet to a concrete monument found at the southwest corner of Lot 30 in O'Connor's Point Allotment No. 1, passing a 5/8 inch iron bar found at 10.00 feet.

Thence with the south line of said Lot 30 on a 25 foot radius curve to the left, the chord of which measures S. 56° 40' 39" E. 33.13 feet, an arc distance of 36.21 feet to a 5/8 inch iron bar found.

Thence continuing with said south line on a 180.00 foot radius curve to the right the chord of which measures S. 79° 28' 47" E. 115.39 feet, an arc distance of 117.47 feet to a 5/8 inch iron bar found.

Thence again with said south line N. 42° 24' 14" E. 147.61 feet to a 5/8 inch iron bar found at the northwest corner of Lot 25 of said Allotment.

Thence with the west line of said Lot 25 and the west line of Lot 26 of said Allot. S. 33° 41' 28" E. 270.09 feet to a 5/8 inch iron bar found at the south corner of said Lot 26, passing a 5/8 inch iron bar found a 110.98 feet.

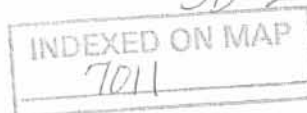
Thence with the east line of said Lot 26 N. 31° 01' 55" E. 88.00 feet to the place of beginning.

Containing 2.468 acres more or less.

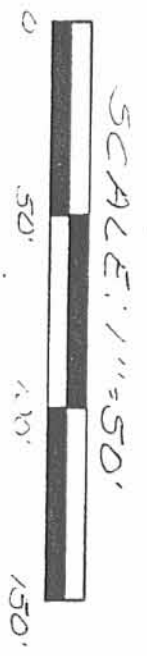
The above described 2.468 acre tract being the remainder of O'Connor's Landing, Inc.'s 18.393 acre tract as described in O. R. Vol. 194 Page 235.

Bearings are based on an assumed bearing (S. 31° 01' 55" W.) for the west line of O'Connor's Farm, Inc.'s 0.472 acre tract as described in O. R. Vol. 193 Page 732 in this field survey by Leslie H. Geeslin, Reg. Surveyor 5248 on August 26, 1994.

RIA:\07\OCONNOR.SAM



Leslie H. Geeslin



O'CONNOR'S POINT ALLOTMENT NO. 1



SURVEY OF 2468 ACRES & VIRGINIA MILITARY SURVEY 9968, EICHLEND TOWNSHIP LOGAN COUNTY, OHIO FOR MARK O'CONNOR ON AUGUST 26, 1944

- A: S. 34° 22' 46" E 11.46'
- B: N. 84° 24' 39" W 46.20'
- C: S. 20° 48' 46" E 37.96'
- D: S. 25° 50' 09" W 27.25'
- E: N. 56° 58' 19" W 59.10'
- F: S. 31° 01' 55" W 21.37'
- G: N. 72° 46' 59" W 39.46'
- H: S. 21° 24' 29" E 26.43'
- I: S. 10° 51' 09" W 40.56'



INDEXED ON MAP 7011

3P

Leslie H. Geeslin
 Registered Surveyor
 Elisha, Pennsylvania, D. 17428-3700