

O'Conner Farms, Inc.  
to  
United Telephone Co.  
Easement Description

The following described real estate situated in the Township of Richland, County of Logan, State of Ohio and being a part of Virginia Military Survey No. 9968 and being a part of 130.00 Acre tract (Tract No. VI) Deed Volume 353 Page 663-670 (June 20, 1974) in the name of O'Conner Farms, Inc. and being more particularly described as follows:

Beginning at an iron pipe found at the southwest corner to Lot No. 1, O'Conner Allotment as recorded in Slide Cabinet A, Slide 239 and on the north side of C. H. No. 254;

Thence S.  $6^{\circ} 42'$  E. 50.00 feet to a point in the south line of C. H. No. 254;

Thence with the south line of C. H. No. 254, N.  $83^{\circ} 18'$  E. 18.50 feet to a wood corner post for the true place of beginning for this description;

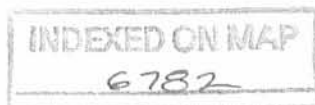
Thence continuing with the south line of C. H. No. 254, N.  $83^{\circ} 18'$  E. 15.00 feet to an iron bar set;

Thence S.  $6^{\circ} 42'$  E. 25.00 feet to an iron bar set;

Thence S.  $83^{\circ} 18'$  W. 15.00 feet to an iron bar set in a fence line;

Thence N.  $6^{\circ} 42'$  W. 25.00 feet to the place of beginning, containing 375.00 square feet or 0.0086 Acres, more or less.

I hereby certify that this is a true and accurate description of a survey made by me on October 23, 1982.

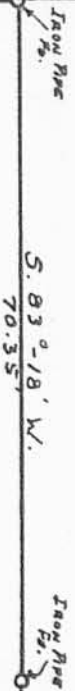


1D

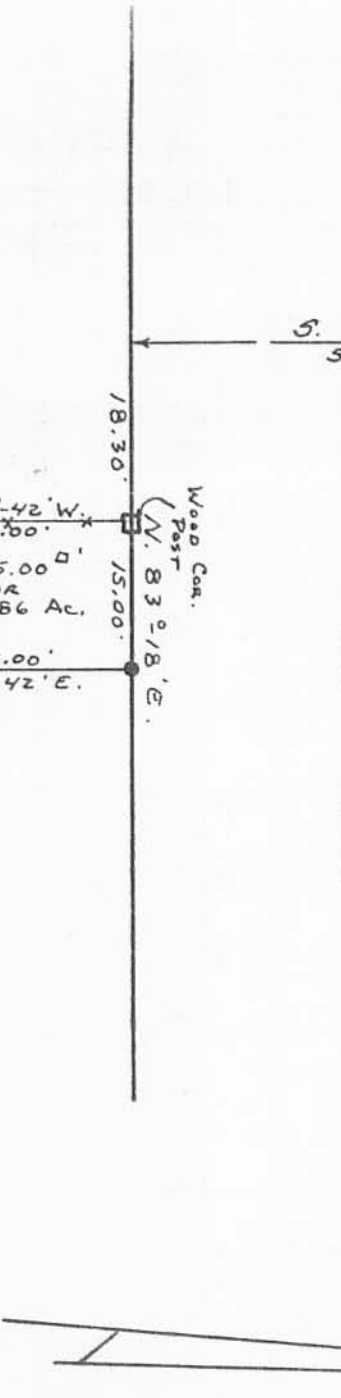
*Daniel E. Gilbert*  
Daniel E. Gilbert, P.S.  
Reg. Sur. No. 5402  
1041 N. Main St.  
Bellefontaine, Ohio 43311

16' LANE

LOT No. 1  
O'CONNOR ALLOT.



C. H. No. 254  
- 50' R/W.



O'CONNOR FARMS, INC.

130.00 Ac. TRACT

DEED Vol. 353 Pages 663-670  
(6-20-1974)  
TRACT VI

6782

INDEXED ON MAP

O'CONNOR FARMS, INC.

TO  
UNITED TELEPHONE SERVICE  
V.M.S. No. 9968

RICHLAND TOWNSHIP  
LOGAN COUNTY, OHIO  
OCTOBER 23, 1982

SURVEYED AND PLATTED BY:  
DANIEL E. GILBERT, P.S.  
REG. SUR. No. 5402  
1041 N. MAIN ST.  
BELLEFONTAINE, OHIO 43311

INDEXED ON MAP  
6782

SCALE: 1" = 20'

REC'D 7-29-05 SMM/OK

# Lee Surveying and Mapping Co., Inc.

Land Surveys • Topography • Subdivisions • Construction Layout

117 N. Madriver St.  
Bellefontaine OH 43311



Phone: (937) 593-7335  
Fax: (937) 593-7444

**1975 - 2005 - 30 YEARS OF EXCELLENCE**

**O'CONNOR FARMS, INC.**

**1.098 ACRE**

Lying in Virginia Military Survey 9968, Richland Township, Logan County, Ohio.

Being out of the O'Connor Farms, Inc. 130 acre tract as deeded and described in Volume 353, Page 663, Tract VI and being more particularly described as follows:

Beginning a 6 inch concrete monument found at the intersection of the west right-of-way line of Lake Breeze Drive and the north line of Virginia Military Survey 9968.

THENCE, with the west right-of-way of Lake Breeze Drive, S 6°-33'-40"E, a distance of 131.40 feet to a 5/8 inch iron rod found at P.T. Station 28 + 44.92 on the center-line of County Road 254 (variable widths).

THENCE, with a curve to the left with a central angle of 32°-11'-00", a radius of 184.11 feet, an arc length of 103.42 feet, and having a chord bearing of N 67°-12'-45"E at a distance of 102.06 feet to a point.

THENCE, with the center-line of County Highway 254, N 51°-07'-15"E, a distance of 1.23 feet to a MAG nail set.

THENCE, S 12°-05'-00"E, a distance of 322.34 feet to a 5/8 inch iron rod set, passing a 5/8 inch iron rod set at 31.47 feet.

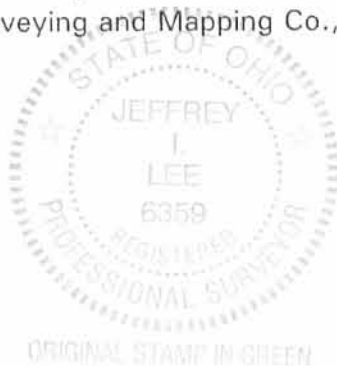
THENCE, S 83°-48'-19"W, a distance of 174.73 feet to a 5/8 inch iron rod set.

THENCE, N 6°-41'-45"W, a distance of 290.45 feet to a MAG nail set, passing a 5/8 inch iron rod found at 240.07, and a 5/8 inch iron rod set at 265.45 feet.

THENCE, with the center-line of County Highway 254, N 83°-18'-15"E, a distance of 45.35 feet to the point of beginning.

Containing 1.098 acres of which 0.089 acre is within the highway right-of-way.

The basis for bearings is the north line of Virginia Military Survey 9968 being N 83°-00'-00"E, and all other bearings are from angles and distances measured in a field survey by Lee Surveying and Mapping Co., Inc. on July 22, 2005.



Description prepared by:

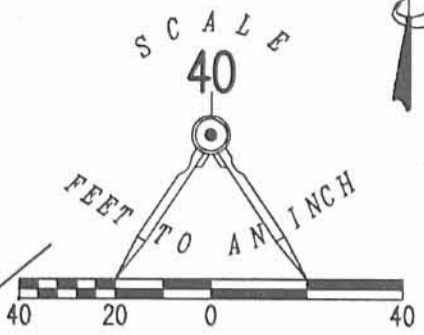
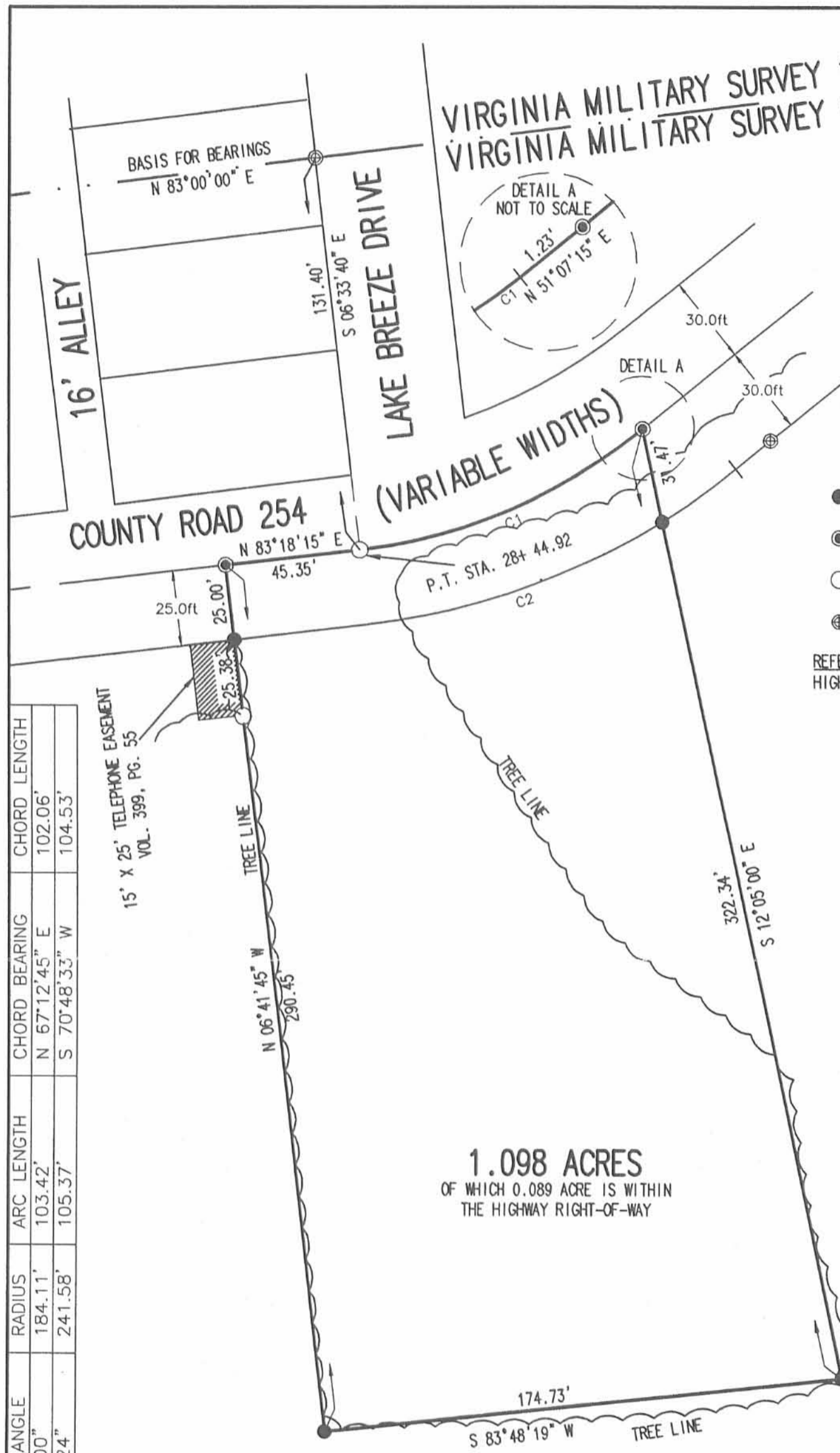
Jeffrey I. Lee  
Professional Surveyor 6359  
July 26, 2005

L-4073075

INDEXED ON MAP  
6782

2D

VIRGINIA MILITARY SURVEY 13393  
 VIRGINIA MILITARY SURVEY 9968



- LEGEND
- 5/8 INCH IRON ROD SET
  - ⊙ MAG NAIL SET
  - 5/8 INCH IRON ROD FOUND
  - ⊕ 6 INCH CONCRETE MONUMENT FOUND

REFERENCES:  
 HIGHWAY PLANS ROAD NO. 254 SHEET 1

O'CONNOR FARMS, INC.  
 130 ACRE TRACT  
 VOLUME 353, PAGE 663 TRACT VI

1.098 ACRES  
 OF WHICH 0.089 ACRE IS WITHIN  
 THE HIGHWAY RIGHT-OF-WAY

CURVE	DELTA ANGLE	RADIUS	ARC LENGTH	CHORD BEARING	CHORD LENGTH
C1	32°11'00"	184.11'	103.42'	N 67°12'45" E	102.06'
C2	24°59'24"	241.58'	105.37'	S 70°48'33" W	104.53'

A SURVEY OF A  
 1.098 ACRE TRACT OUT OF THE  
 O'CONNOR FARMS, INC.  
 130 ACRE TRACT  
 VOLUME 353, PAGE 663 TRACT VI  
 VIRGINIA MILITARY SURVEY 9968  
 RICHLAND TOWNSHIP  
 LOGAN COUNTY, OHIO



SURVEYED BY:  
  
 JEFFREY I. LEE  
 PROFESSIONAL SURVEYOR 6359  
 JULY 22, 2005

2 WORKING DAYS  
**BEFORE YOU DIG**  
 CALL TOLL FREE 800-362-2764  
 OHIO UTILITIES PROTECTION SERVICE.

INDEXED ON MAP  
 6782

COPYRIGHT 2005 BY:  
 LEE SURVEYING & MAPPING CO., INC.  
 117 North Madriver Street  
 BELLEFONTAINE, OHIO 43311  
 (937) 593-7335

11-4-15

# Lee Surveying and Mapping Co., Inc.



Land Surveys • Topography • Subdivisions • Construction Layout

117 N. Madriver St.  
Bellefontaine OH 43311



Phone: (937) 593-7335  
Fax: (937) 593-7444  
surveys@lsminc.us

## O'CONNOR FARMS, INC. 0.655 ACRE

Lying in Virginia Military Survey 9968, Richland Township, Logan County, Ohio.

Being out of the O'Connor Farms, Inc., 130 acre tract as deeded and described in Volume 353, Page 663, Tract VI of the Logan County Records of Deeds and being more particularly described as follows:

Commencing on a 5/8 inch iron rod found on the center-line of County Highway 254 (variable widths) at P.T. Station 28 + 44.92 (Highway Plans Road No. 254, Sheet #1).

THENCE, with the center-line of County Highway 254, S 83°-18'-15"W, a distance of 45.35 feet to a MAG nail found.

THENCE, with the west line of the O'Connor's Landing, Inc., 1.098 acre tract (O.R. 789, Pg. 878), S 06°-41'-45"E, a distance of 290.45 feet to a 5/8 inch iron rod found at the TRUE POINT OF BEGINNING, passing a 5/8 inch iron rod found at 25.00 feet.

THENCE, with the south line of the said 1.098 acre tract, N 83°-48'-19"E, a distance of 174.73 feet to a 5/8 inch iron rod found.

THENCE, S 12°-05'-00"E, a distance of 105.08 feet to a 5/8 inch iron rod set.

THENCE, S 53°-54'-43"W, a distance of 211.86 feet to a 5/8 inch iron rod set.

THENCE, N 06°-41'-45"W, a distance of 210.12 feet to the point of beginning.

Containing 0.655 acre.

Property is subject to any and all previous easements and rights-of-way of record.

This parcel is to be attached to an adjoining tract of land and is not to be used as a separate and independent parcel.

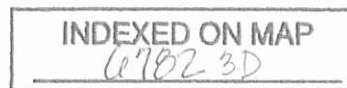
The basis for bearings is the center-line of County Highway 254, being S 83°-18'-15"W, and all other bearings are from angles and distances measured in a field survey by Lee Surveying and Mapping Co., Inc. on October 27, 2015.



Description prepared by:

William K. Bruce  
Professional Surveyor 7437  
October 28, 2015

40731015



11-4-15

APPROVED

COUNTY HIGHWAY 254  
(VARIABLE WIDTHS)

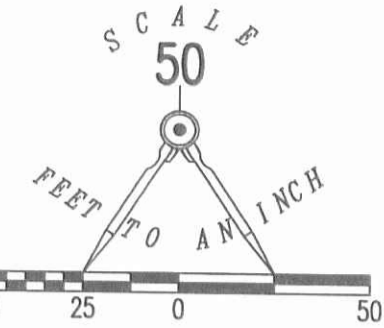
(BASIS FOR BEARINGS)  
S 83°18'15" W

25.00'

45.35'

P.T. STATION 28+44.92  
(HIGHWAY PLANS ROAD NO. 254  
SHEET #1)

O'CONNOR'S LANDING, INC.  
1.098 ACRES  
O.R. 789, PG. 878



LEGEND:

- ⊙ MAG NAIL FOUND
- 5/8 INCH IRON ROD FOUND
- 5/8 INCH IRON ROD SET WITH PLASTIC I.D. CAP STAMPED "LSM 7437"

O'CONNOR FARMS, INC.  
130 ACRE TRACT  
VOL. 353, PG. 663  
TRACT VI

S 06°41'45" E  
290.45'

N 83°48'19" E  
174.73'

S 12°05'00" E  
105.08'

0.655 ACRE

N 06°41'45" W  
210.12'

211.86'  
S 53°54'43" W

SURVEY OF 0.655 ACRE OUT OF THE  
O'CONNOR FARMS, INC.  
130 ACRE TRACT  
VOLUME 353, PAGE 663  
TRACT VI  
VIRGINIA MILITARY SURVEY 9968  
RICHLAND TOWNSHIP  
LOGAN COUNTY, OHIO

SURVEYED BY:

*William K. Bruce*

WILLIAM K. BRUCE  
PROFESSIONAL SURVEYOR 7437  
OCTOBER 27, 2015

COPYRIGHT 2015 BY:

LEE SURVEYING & MAPPING CO., INC.  
117 North Madriver Street  
BELLEFONTAINE, OHIO 43311  
(937) 593-7335  
WWW.LSMINC.US  
surveys@lsminc.us



**NOTE:**

THIS PARCEL IS TO BE ATTACHED TO AN ADJOINING TRACT OF LAND AND IS NOT TO BE USED AS A SEPARATE AND INDEPENDENT PARCEL.



CALL TOLL FREE 800-362-2764

OHIO UTILITIES PROTECTION SERVICE.

INDEXED ON MAP  
6782 3D

KSS D1015 40731015 L-4073-3