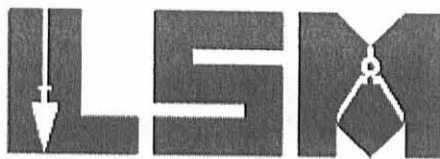


Lee Surveying and Mapping Co., Inc.

Land Surveys • Topography • Subdivisions • Construction Layout

117 N. Madriver St.
Bellefontaine OH 43311



Phone: (937) 593-7335
Fax: (937) 593-7444
surveys@lsminc.us

COOK 3.000 ACRES

Lying in Virginia Military Survey 9972, Richland Township, Logan County, Ohio.

Being out of the James S. Cook 149.26 acre tract as deeded and described in Official Record 867, Page 288, Tract I of the Logan County Records of Deeds and being more particularly described as follows:

Commencing on a 1 inch iron rod found on the center-line of County Highway 39 at Station 253+90 (Logan County Engineer's Field Book 579, Page 32).

THENCE, with the center-line of County Highway 39 (60 feet wide), N 37°-32'-21"E, a distance of 1090.47 feet to a MAG nail set at the TRUE POINT OF BEGINNING.

THENCE, with the center-line of County Highway 39, N 37°-32'-21"E, a distance of 285.00 feet to a MAG nail set.

THENCE, S 54°-12'-35"E, a distance of 418.27 feet to a 5/8 inch iron rod set, passing a 5/8 inch iron rod set at 30.01 feet.

THENCE, S 30°-14'-50"W, a distance of 314.28 feet to a 5/8 inch iron rod set.

THENCE, N 50°-42'-50"W, a distance of 458.18 feet to the point of beginning, passing a 5/8 inch iron rod set at 428.17 feet.

Containing 3.000 acres, of which 0.197 acre is within the highway right-of-way.

Property is subject to any and all previous easements and rights-of-way of record.

The basis for bearings is the center-line of County Highway 39, being N 37°-32'-21"E, and all other bearings are from angles and distances measured in a field survey by Lee Surveying and Mapping Co., Inc. on April 6, 2010.

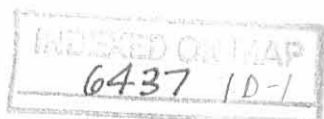


ORIGINAL STAMP IN GREEN

Description prepared by:

William K. Bruce
Professional Surveyor 7437
April 6, 2010

4922310



RECID 4-7-10 SUR OK

Lee Surveying and Mapping Co., Inc.

Land Surveys • Topography • Subdivisions • Construction Layout

117 N. Madriver St.
Bellefontaine OH 43311



Phone: (937) 593-7335
Fax: (937) 593-7444
surveys@lsminc.us

COOK 10.00 FEET WIDE DRAINAGE EASEMENT

Lying in Virginia Military Survey 9972, Richland Township, Logan County, Ohio.

Being a 10.00 feet wide drainage easement over a portion of the James S. Cook 149.26 acre tract as deeded and described in Official Record 867, Page 288, Tract I of the Logan County Records of Deeds and being more particularly described as follows:

Commencing on a 1 inch iron rod found on the center-line of County Highway 39 at Station 253+90 (Logan County Engineer's Field Book 579, Page 32).

THENCE, with the center-line of County Highway 39 (60 feet wide), N 37°-32'-21"E, a distance of 1375.47 feet to a MAG nail set.

THENCE, S 54°-12'-35"E, a distance of 313.83 feet to a point at the TRUE POINT OF BEGINNING, passing a 5/8 inch iron rod set at 30.01 feet.

THENCE, with the center-line of said 10.00 feet wide drainage easement, the following three courses:

S 10°-56'-10"W, a distance of 78.02 feet to a point.

S 08°-22'-20"W, a distance of 74.61 feet to point.

S 04°-35'-56"E, a distance of 88.12 feet to a point at the terminus of this easement.

The sidelines of said easement to be shortened or prolonged to meet at angle point intersections.

Property is subject to any and all previous easements and rights-of-way of record.

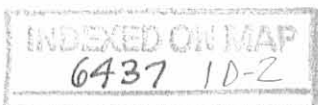
The basis for bearings is the center-line of County Highway 39, being N 37°-32'-21"E, and all other bearings are from angles and distances measured in a field survey by Lee Surveying and Mapping Co., Inc. on April 6, 2010.



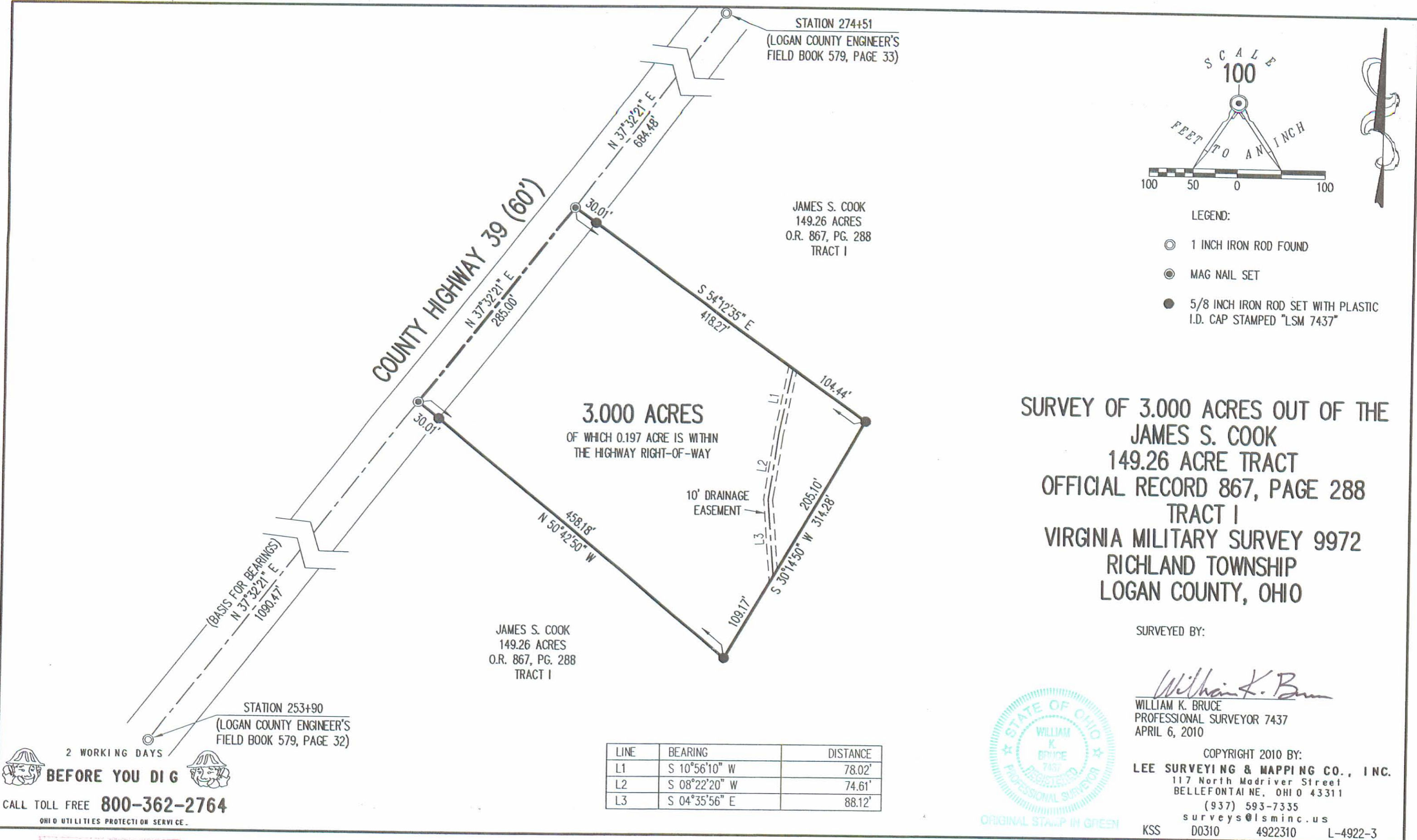
Description prepared by:

William K. Bruce
Professional Surveyor 7437
April 6, 2010

4922310



REV'D 4-7-10 SMY OU



STATION 274+51
(LOGAN COUNTY ENGINEER'S
FIELD BOOK 579, PAGE 33)

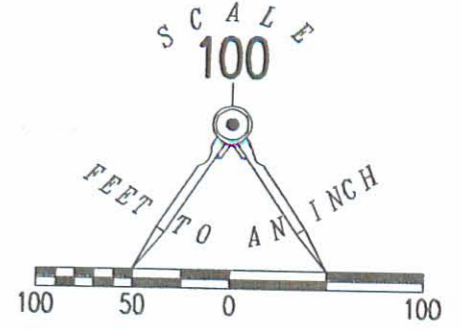
JAMES S. COOK
149.26 ACRES
O.R. 867, PG. 288
TRACT I

JAMES S. COOK
149.26 ACRES
O.R. 867, PG. 288
TRACT I

STATION 253+90
(LOGAN COUNTY ENGINEER'S
FIELD BOOK 579, PAGE 32)

2 WORKING DAYS
BEFORE YOU DIG
CALL TOLL FREE **800-362-2764**
OHIO UTILITIES PROTECTION SERVICE.

LINE	BEARING	DISTANCE
L1	S 10°56'10" W	78.02'
L2	S 08°22'20" W	74.61'
L3	S 04°35'56" E	88.12'



- LEGEND:
- ⊙ 1 INCH IRON ROD FOUND
 - ⊙ MAG NAIL SET
 - 5/8 INCH IRON ROD SET WITH PLASTIC I.D. CAP STAMPED "LSM 7437"

**SURVEY OF 3.000 ACRES OUT OF THE
JAMES S. COOK
149.26 ACRE TRACT
OFFICIAL RECORD 867, PAGE 288
TRACT I
VIRGINIA MILITARY SURVEY 9972
RICHLAND TOWNSHIP
LOGAN COUNTY, OHIO**

SURVEYED BY:

William K. Bruce
WILLIAM K. BRUCE
PROFESSIONAL SURVEYOR 7437
APRIL 6, 2010



COPYRIGHT 2010 BY:
LEE SURVEYING & MAPPING CO., INC.
117 North Madriver Street
BELLEFONTAINE, OHIO 43311
(937) 593-7335
surveys@lsmcinc.us
KSS D0310 4922310 L-4922-3

INDEXED ON MAP
6437 IP