

# Lee Surveying and Mapping Co.



Farm Surveys • Lot Surveys • Topography • Subdivisions • Construction Layout

855 EAST SANDUSKY AVENUE  
BELLEFONTAINE, OHIO 43311

(513) 593-5780

CLAYTON M. LEE, P.S.  
JEFFREY I. LEE, P.S.

## LAUTENSCHLAGER SURVEY

Lying in V.M.S. 9989, Richland Township, Logan County, Ohio and being the south 92 acres of that tract deeded and described in Volume 383, Page 149 of the Logan County Records of Deeds and more particularly described as follows:

Beginning at an iron spike set on the center-line of County Road 106 and marking the southeast corner of said 92 acres and designated in the county engineer's records as being Station 172+50.

THENCE, with the east line of V.M.S. 9989 and the center of County Road 106, N 10°-06' W, a distance of 609.0 feet to an iron spike set for the northeast corner of this survey and lying southerly along said center-line a distance of 1664 feet from the Logan-Hardin County line.

THENCE, parallel to the south property line, S 79°-56' W, a distance of 1645.2 feet to an iron rod set on the west line of said 92 acre tract.

THENCE, with said west line, S 10°-06' E, a distance of 609.0 feet to a corner post at the southwest corner of said 92 acres.

THENCE, with the south line of said 92 acres, N 79°-56' E, a distance of 1645.2 feet to the point of beginning. Containing 23.00 acres.

Last previous deed reference: Volume 383, Page 149.

Surveyed by:

Clayton M. Lee  
Reg. Surveyor No. 6181  
6-7-79



1D

*Michell, 110.94 Ac.  
 Vol. 300 Pg. 57.  
 Page 2.*

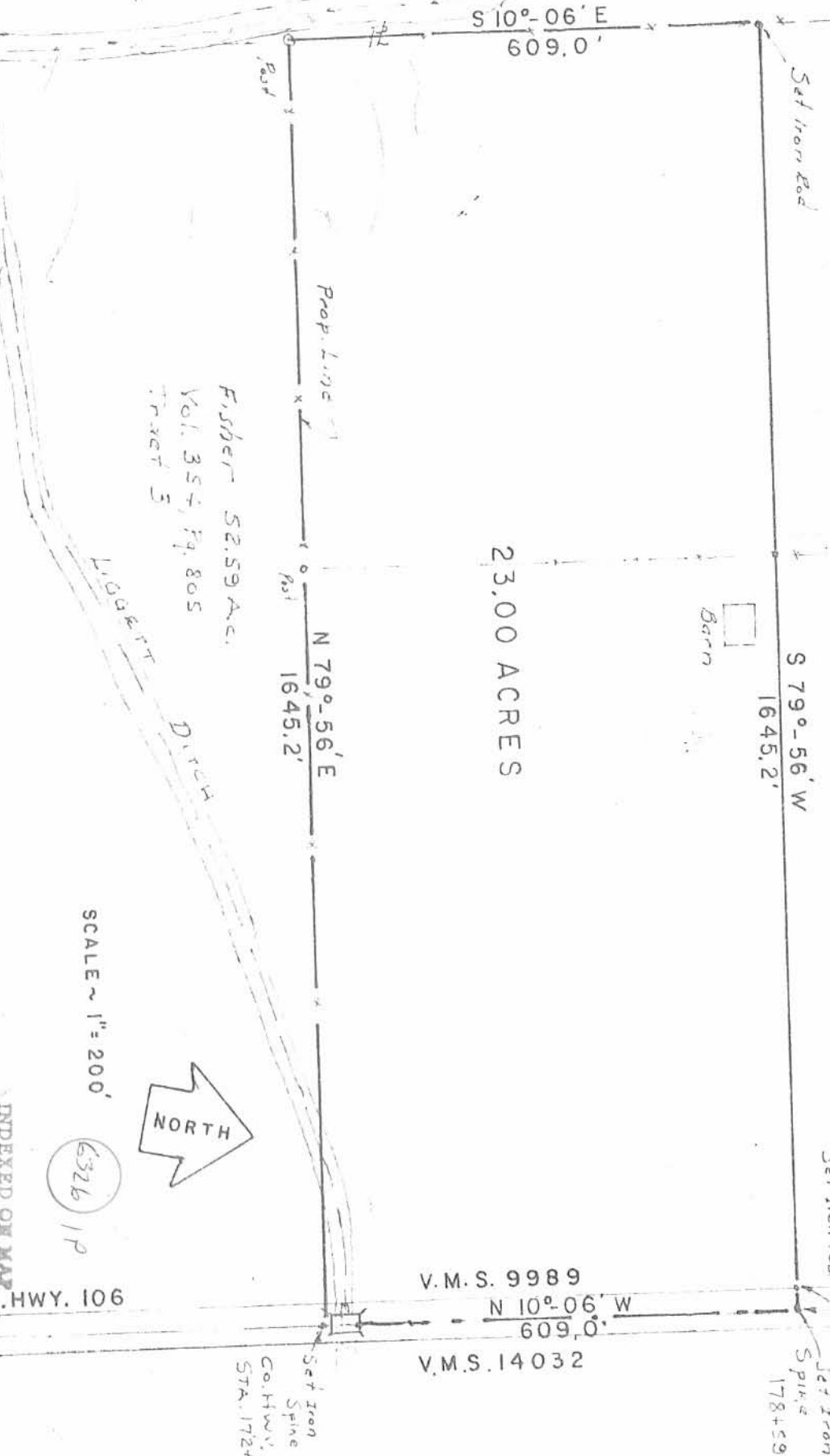
*FRANCIS  
 1236c*



**SURVEY OF THE SOUTH 23 ACRES OF THE  
 FRANCES LAUTENSCHLAGER ESTATE (92 AC., Vol. 383, Pg. 149)  
 V.M.S. 9989, RICHLAND TOWNSHIP,  
 LOGAN COUNTY, OHIO**

LAUTENSCHLAGER, 92 AC,  
 Vol. 383, Pg. 149

23.00 ACRES



*Fisher 52.59 Ac.  
 Vol. 354, Pg. 805  
 Tract 3*

*LOGGERT  
 DITCH*

SCALE ~ 1" = 200'



(5326) 1P

INDEXED ON MAP

CO. HWY. 106

V.M.S. 9989  
 N 10°-06' W  
 609.0'  
 V.M.S. 14032

*1664' To  
 County Line*

*Set Iron  
 Spike  
 Co. Hwy.  
 STA. 172+50*

*Set Iron  
 Spike  
 178+59*

Surveyed by: *Clayton M. Lee*  
 Clayton M. Lee  
 Reg. No. 6181  
**Lee Surveying & Mapping Co.**  
 855 E. Sandusky Ave.  
 BELLEFONTAINE, OHIO 43311  
 (513) 593-5780

Received 11/28/90 OK gch



# Lee Surveying and Mapping Co.



Farm Surveys • Lot Surveys • Topography • Subdivisions • Construction Layout

143 EAST COLUMBUS AVENUE  
BELLEFONTAINE, OHIO 43311

(513) 593-7335  
(513) 593-5780

CLAYTON M. LEE, P.S.  
JEFFREY I. LEE, P.S.

## ELIZABETH CULLIN SURVEY

Lying in V.M.S. 9989, Richland Township, Logan County, Ohio.

Being out of that 23.00 acres in the name of Elizabeth Cullin as deeded and described in Volume 383, Page 149 of the Logan County Records of Deeds and being more particularly described as follows:

Beginning at a railroad spike set on the center-line of County Road 106, marking the southeast corner of the said 23.00 acres and being Station 172+50 in the Logan County Engineer's Field Book 596, Page 74.

THENCE, with the south line of the 23.00 acre tract, S 79°-56'-00" W, a distance of 417.43 feet to a 5/8" iron rod (set).

THENCE, parallel to the center-line of County Road 106, N 10°-06'-00" W, a distance of 208.71 feet to a 5/8" iron rod (set).

THENCE, N 79°-56'-00" E, a distance of 417.43 feet to a railroad spike set on the center-line of County Road 106, passing a 5/8" iron rod set at 387.43 feet.


THENCE, with the center-line of County Road 106, S 10°-06'-00" E, a distance of 208.71 feet to the point of beginning.

Containing 2.000 acres.

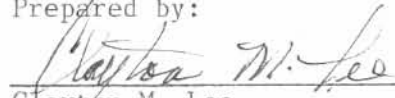
This description prepared from an actual field survey.

Basis for bearings: Center-line County Road 106 = S 10°-06'-00" E.

See: Logan County Engineer's Field Book 596, Page 74.

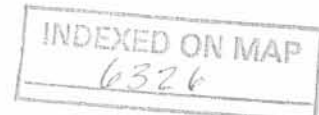
  
Jeffrey I. Lee  
Registered Surveyor No. 6359  
November 28, 1990

Prepared by:

  
Clayton M. Lee  
Registered Surveyor No. 6181  
June 25, 1990



ORIGINAL STAMP IN GREEN



2D



SCALE  
1"=100'

HARDIN COUNTY  
LOGAN COUNTY

1"-E+23  
FB 596  
Pg. 77

LEGEND

- 2"  $\phi$  IRON FND
- ⊗ SPIKE FND
- ⊗ RR SPIKE SET
- 5/8" IRON ROD SET

REFERENCES:

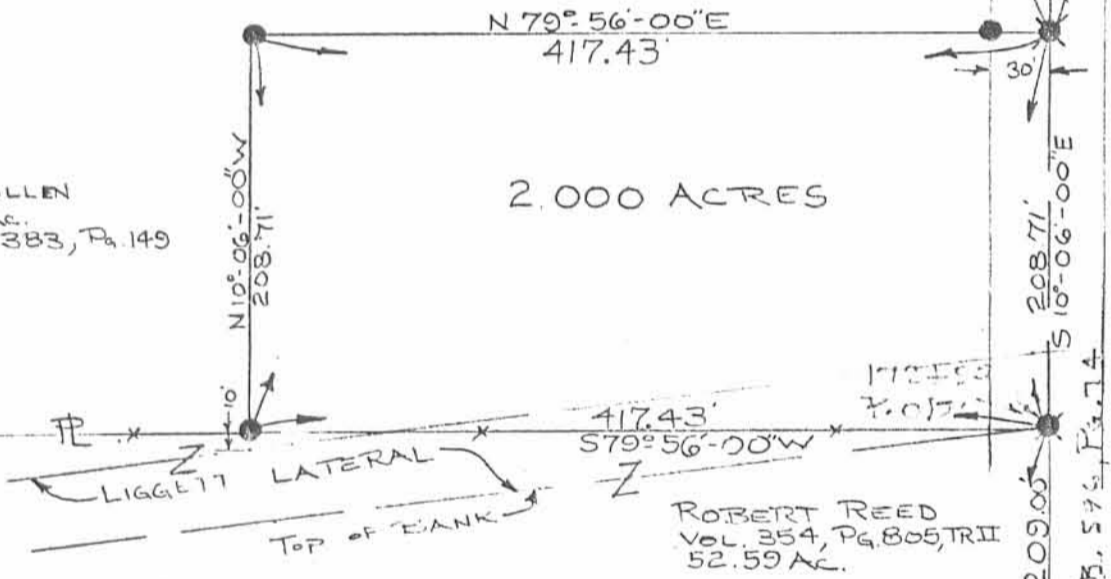
VOL. 384, Pg. 123,  
LOGAN COUNTY CLERK  
OF RECORDS;

LOGAN COUNTY ENG.  
F.B. 596, Pg 74-77

ELIZABETH CULLEN  
Vol. 383, Pg. 149  
23.0 AC.

E CULLEN  
23 AC.  
VOL. 383, Pg. 149

2,000 ACRES



SURVEY OF 2,000 ACRES OUT OF  
THE ELIZABETH CULLIN  
23.00 ACRES (VOL. 383, Pg. 149)  
V.M.S. 9989  
RICHLAND TOWNSHIP  
LOGAN COUNTY, OHIO



ORIGINAL STAMP IN GREEN

By: *[Signature]*  
JEFFREY I LEE  
PROF. SURVEYOR # 6359  
JUNE 22, 1990

INDEXED ON MAP  
6326

2P

LEE SURVEYING & MAPPING CO.  
143 East Columbus Avenue  
BELLEFONTAINE, OHIO 43311  
(513) 593-7335

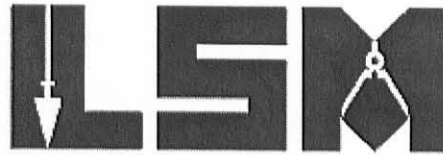
L 580-4

REC'D 5-22-12 SMY AU

# Lee Surveying and Mapping Co., Inc.

Land Surveys • Topography • Subdivisions • Construction Layout

117 N. Madriver St.  
Bellefontaine OH 43311



Phone: (937) 593-7335  
Fax: (937) 593-7444  
surveys@lsminc.us

## LAUTENSCHLAGER, LAUTENSCHLAGER, LAUTENSCHLAGER AND CULLEN 45.352 ACRES

Lying in Virginia Military Survey 9989, Richland Township, Logan County and McDonald Township, Hardin County, Ohio.

Being out of the Phillip E. Lautenschlager, Harry L. Lautenschlager, Robert M. Lautenschlager and Elizabeth Cullen original 92 acre tract as deeded and described in Volume 383, Page 149 of the Logan County Records of Deeds and Volume 82, Page 76 of the Hardin County Records of Deeds and being more particularly described as follows:

Commencing on a 1 inch iron bar found in a monument box on the center-line of Logan County Highway 106 on a north line of Richland Township, Logan County and a south line of McDonald Township, Hardin County.

THENCE, with the center-line of County Highway 106 (60 feet wide), S 06°-57'-01"E, a distance of 41.63 feet to a MAG nail set at the TRUE POINT OF BEGINNING.

THENCE, with the center-line of County Highway 106, S 06°-57'-01"E, a distance of 1024.40 feet to a MAG nail set.

THENCE, S 82°-59'-20" W, a distance of 1650.31 feet to a 5/8 inch iron rod set, passing a 5/8 inch iron rod set at 30.00 feet.

THENCE, with the east line of the Kenneth E. Bushong 128.87 acre tract (O.R. 1, Pg. 389, Tract II), N 07°-27'-19"W, a distance of 1236.99 feet to a 5/8 inch iron rod found.

THENCE, with the south line of the Hampton Living Trust 31 acre tract (O.R. 866, Pg. 583, Tract 2 (Logan County) and O.R. 467, Pg. 1003, Tract 2 (Hardin County), N 82°-21'-11"E, a distance of 1280.74 feet to a 5/8 inch iron rod found.

THENCE, with the lines of the Craig V. Downey 2.012 acre tract (O.R. 203, Pg. 822 (Logan County) and Vol. 139, Pg. 116 (Hardin County), the following two courses:

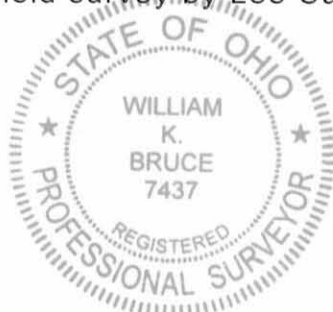
S 06°-59'-25"E, a distance of 230.99 feet to a 5/8 inch iron rod found.

N 82°-21'-09"E, a distance of 380.43 feet to the point of beginning, passing a 5/8 inch iron rod set at 350.43 feet.

Containing 45.352 acres, of which 0.705 acre is within the highway right-of-way. There are 44.718 acres in Logan County and 0.634 acre in Hardin County.

Property is subject to any and all previous easements and rights-of-way of record.

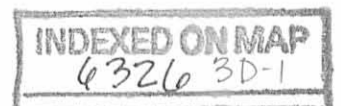
The basis for bearings is the center-line of County Highway 106, being S 06°-57'-01"E, and all other bearings are from angles and distances measured in a field survey by Lee Surveying and Mapping Co., Inc. on May 14, 2012.



ORIGINAL STAMP IN GREEN

Description prepared by:

William K. Bruce  
Professional Surveyor 7437  
May 15, 2012



53200512

# Lee Surveying and Mapping Co., Inc.

Land Surveys • Topography • Subdivisions • Construction Layout

117 N. Madriver St.  
Bellefontaine OH 43311



Phone: (937) 593-7335  
Fax: (937) 593-7444  
surveys@lsminc.us

## LAUTENSCHLAGER, LAUTENSCHLAGER, LAUTENSCHLAGER AND CULLEN 22.676 ACRES

Lying in Virginia Military Survey 9989, Richland Township, Logan County Ohio.

Being out of the Phillip E. Lautenschlager, Harry L. Lautenschlager, Robert M. Lautenschlager and Elizabeth Cullen original 92 acre tract as deeded and described in Volume 383, Page 149 of the Logan County Records of Deeds and being more particularly described as follows:

Commencing on a 1 inch iron bar found in a monument box on the center-line of Logan County Highway 106 on a north line of Richland Township, Logan County and a south line of McDonald Township, Hardin County.

THENCE, with the center-line of County Highway 106 (60 feet wide), S 06°-57'-01"E, a distance of 1066.03 feet to a MAG nail set at the TRUE POINT OF BEGINNING, passing a MAG nail set at 41.63 feet.

THENCE, with the center-line of County Highway 106, S 06°-57'-01"E, a distance of 599.49 feet to a 5/8 inch iron rod found.

THENCE, with the north line of the Phillip E. Lautenschlager, II, 21.000 acre tract (O.R. 622, Pg. 934), S 82°-59'-20" W, a distance of 1645.02 feet to a 5/8 inch iron rod found, passing a 5/8 inch iron rod set at 30.00 feet.

THENCE, with the east line of the Kenneth E. Bushong 128.87 acre tract (O.R. 1, Pg. 389, Tract II), N 07°-27'-19"W, a distance of 599.51 feet to a 5/8 inch iron rod set.

THENCE, N 82°-59'-20"E, a distance of 1650.31 feet to the point of beginning, passing a 5/8 inch iron rod set at 1620.31 feet.

Containing 22.676 acres, of which 0.413 acre is within the highway right-of-way.

Property is subject to any and all previous easements and rights-of-way of record.

The basis for bearings is the center-line of County Highway 106, being S 06°-57'-01"E, and all other bearings are from angles and distances measured in a field survey by Lee Surveying and Mapping Co., Inc. on May 14, 2012.

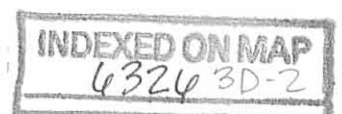
Description prepared by:

William K. Bruce  
Professional Surveyor 7437  
May 15, 2012

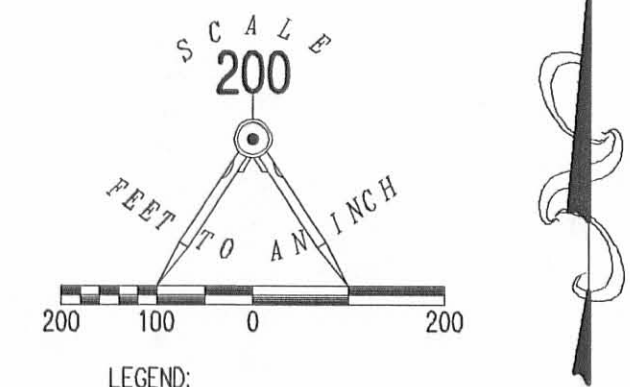


ORIGINAL STAMP IN GREEN

53200512



REV'D 5-22-12 SMJ/OL



SURVEY OF TWO TRACTS OUT OF THE  
 PHILLIP E. LAUTENSCHLAGER, HARRY L. LAUTENSCHLAGER,  
 ROBERT M. LAUTENSCHLAGER AND ELIZABETH CULLEN  
 ORIGINAL 92 ACRE TRACT  
 VOLUME 383, PG. 149 (L)  
 VOLUME 82, PG. 76 (H)  
 VIRGINIA MILITARY SURVEY 9989  
 RICHLAND TOWNSHIP, LOGAN COUNTY  
 MCDONALD TOWNSHIP, HARDIN COUNTY  
 STATE OF OHIO

SURVEYED BY:  
*William K. Bruce*  
 WILLIAM K. BRUCE  
 PROFESSIONAL SURVEYOR 7437  
 MAY 14, 2012



COPYRIGHT 2012 BY:  
 LEE SURVEYING & MAPPING CO., INC.  
 117 North Madriver Street  
 BELLEFONTAINE, OHIO 43311  
 (937) 593-7335  
 WWW.LSMINC.US  
 surveys@lsminc.us  
 ORIGINAL STAMP IN GREEN KSS D0512 53200512 L-5320-2

2 WORKING DAYS  
 BEFORE YOU DIG  
 CALL TOLL FREE 800-362-2764  
 OHIO UTILITIES PROTECTION SERVICE

INDEXED ON MAP  
 6324 3P