

4305 IP

ENTERED ON MAP

SURVEYED AND PLATED BY
 DANIEL E. GILBERT, P.S.
 REG. SUR. NO. 5402
 1041 N. MAIN ST.
 BELLEFONTAINE, OHIO 43311

ANDREWS SURVEY
 Lot 166 + ACREAGE
 V.M.S. No. 13393
 FERNWOOD SUBDIVISION
 LONG ISLAND
 RICHLAND TOWNSHIP
 LOGAN COUNTY, OHIO
 JUNE 2, 1979
 SCALE: 1" = 40'

 **APPROVED**

Terry Bolton
Page 2 of 2
May 21, 2021

LEGAL DESCRIPTION

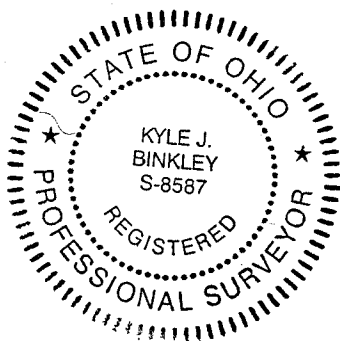
Being a part of the State of Ohio Indian Lake Reservoir Lands and being located in Virginia Military Survey 13393, Richland Township, Logan County, Ohio, more particularly described as follows:

Beginning at a Mag Nail set at the SE corner of Lot #165 of Fernwood No. 3 (P.C. A, Slide 298) in the name of Terry J. & Christine M. Bolton (O.R. 865, Pg. 461) and being the SW corner of Lot #166 in the name of John H. Warren (O.R. 669, Pg. 180); thence the following courses:

1. S 26°-32'-26" E, 8.28' to a point on the face of a concrete seawall;
2. S 75°-29'-29" W with the face of a concrete seawall, 1.16' to a point;
3. S 65°-49'-16" W with the face of a concrete seawall, 51.70' to a point;
4. N 26°-32'-26" W, 7.73' to a point at the SW corner of said Lot #165 and the SE corner of Lot #164 in the name of William C. & Leslie O. Slorp, as referenced by an existing ½" Iron Pipe at N 26°-32'-26" W, 2.20';
5. N 65°-26'-24" E with the S line of said Lot #165, 52.82' to the POINT OF BEGINNING.

The above described parcel contains 0.010 acres, more or less, subject to all legal highways and easements of record.

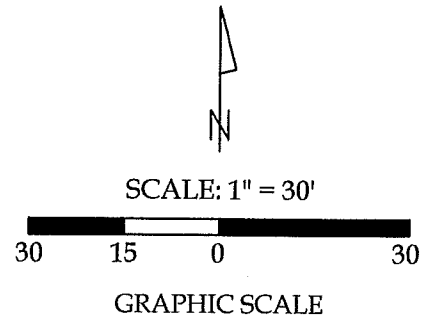
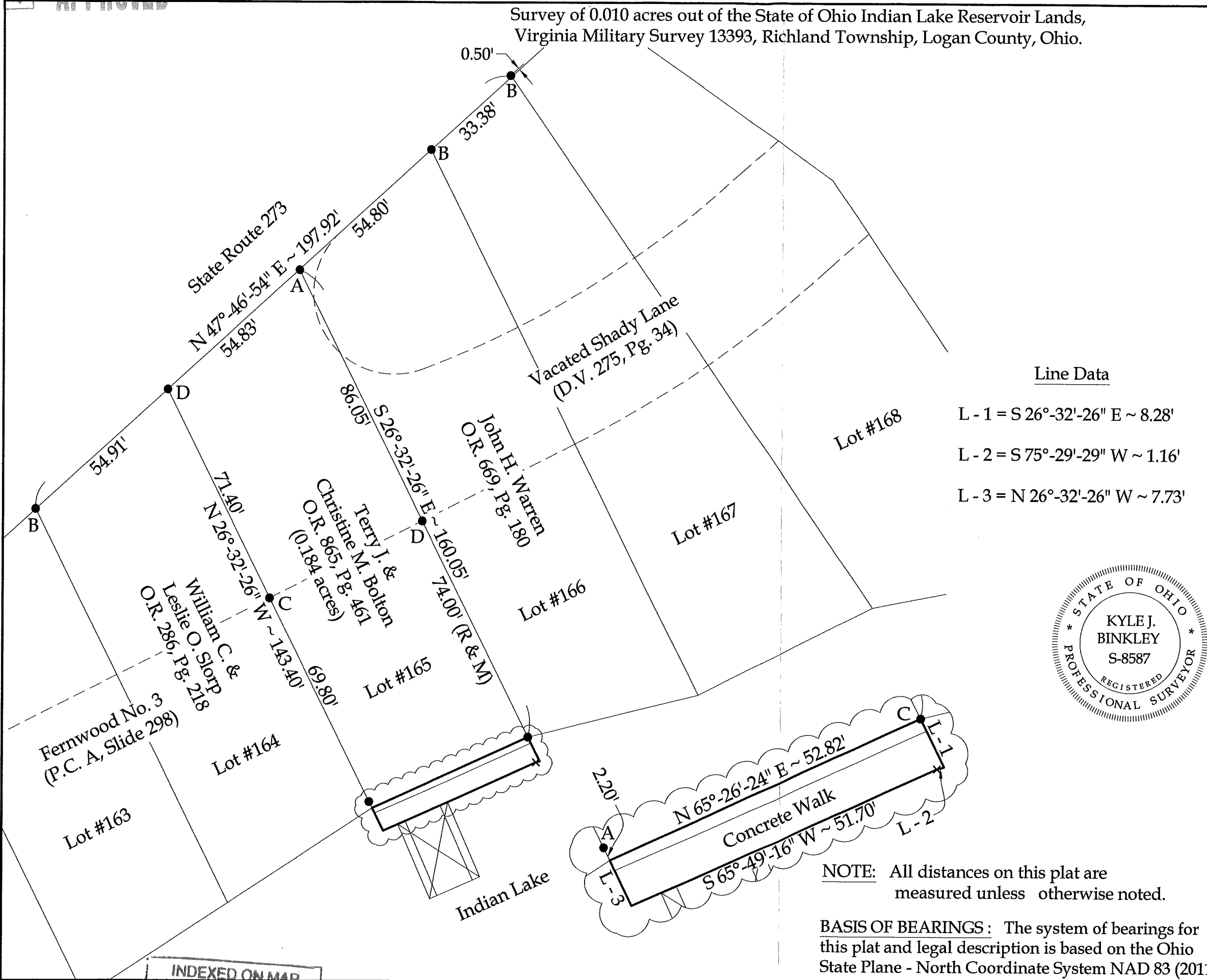
The system of bearings for this legal description is based on the Ohio State Plane-North Coordinate System NAD83 (2011). This legal description and accompanying plat represent an actual boundary survey completed under the direct supervision of Kyle J. Binkley, P.S. #8587 on May 21, 2021. All markers called for above are in place.



INDEXED ON MAP
6305

6-25-2021
APPROVED

Survey of 0.010 acres out of the State of Ohio Indian Lake Reservoir Lands,
 Virginia Military Survey 13393, Richland Township, Logan County, Ohio.

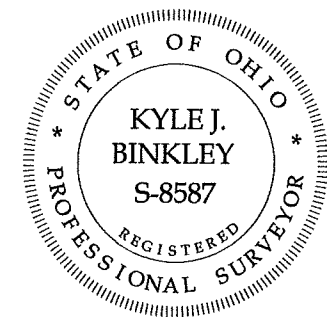


Legend

- A = Existing 1/2" Iron Pipe
- B = Existing #5 Rebar
- C = Set Mag Nail
- D = Set #5 Rebar

Line Data

- L - 1 = S 26°-32'-26" E ~ 8.28'
- L - 2 = S 75°-29'-29" W ~ 1.16'
- L - 3 = N 26°-32'-26" W ~ 7.73'



This plat and the accompanying legal description represent an actual boundary survey completed under my direct supervision on May 21, 2021.

[Signature]
 Kyle J. Binkley, P.S. #8587

Binkley
 LAND SURVEYING, LLC
 121 W. Auglaize Street
 Wapakoneta, Ohio 45895
 (419) 236-3768

NOTE: All distances on this plat are measured unless otherwise noted.

BASIS OF BEARINGS: The system of bearings for this plat and legal description is based on the Ohio State Plane - North Coordinate System NAD 83 (2011).

INDEXED ON MAP
 6305

CLIENT: Terry Bolton			
SURVEYED BY: T.J.S./T.E.W.	DATE: 05-21-2021	DRAWN BY: K.J.B.	CHECKED BY: K.J.B.
SCALE: 1" = 30'	PAGE 1	OF 1	PAGES 2