

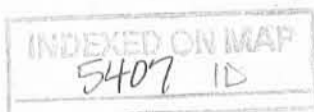
Legal Description

Situated in the Township of Richland, County of Logan, State of Ohio Being part of Virginia Military Surveys #14568 and #9973, bounded and described as follows:

Beginning at the center of State Route 273 between right of way monuments at station 258+00, thence with the center of said State Route 273, South 86 Degrees 00 Minutes East 386.60 feet to a point; thence South 6 Degrees 25 Minutes 30 Seconds East along a projection of the line between Warren J. Liles 60.00 acres and Harry J. Laughlin's land 27.77 feet to an iron pin at the northeast corner of said Liles 60.00 acres which is the true point of beginning of this description.

Thence with the north line of V.M.S. 14568, which is also the north line of Liles 60.00 acres as well as the south line of the Village of Belle Center, South 83 Degrees 42 Minutes 30 Seconds West 877.10 feet, passing an iron pin set on the right of way of State Route 273 at 15.03 feet, to an iron pin; thence South 6 Degrees 25 Minutes 30 Seconds East 546.50 feet to an iron pin; thence North 83 Degrees 42 Minutes 30 Seconds East 277.40 feet to an iron pin in said Laughlin's west line; thence with Laughlin's west line North 6 Degrees 25 Minutes 30 Seconds West 546.50 feet, passing an iron pin set on the right of way of State Route 273 at 543.77 feet, to an iron pin which is the point of beginning.

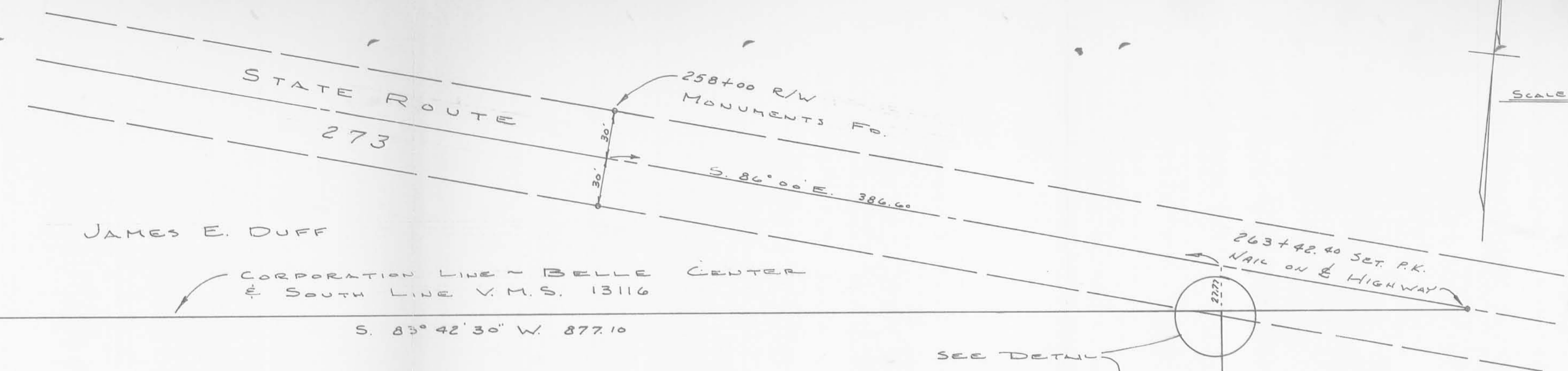
Containing a total of 11.00 acres, more or less, 5.32 acres being situated in V.M.S. #14568 and 5.68 acres being situated in V.M.S. #9973; out of Warren J. Liles and Virginia L. Liles 60.00 acre tract as recorded in Logan County Recorder's Deed Records Volume 338, page 980.



Surveyed by Larry E. Blosser
SIT # 1199

Checked by:

Daniel E. Mullen
REG. SUR. No. 5402

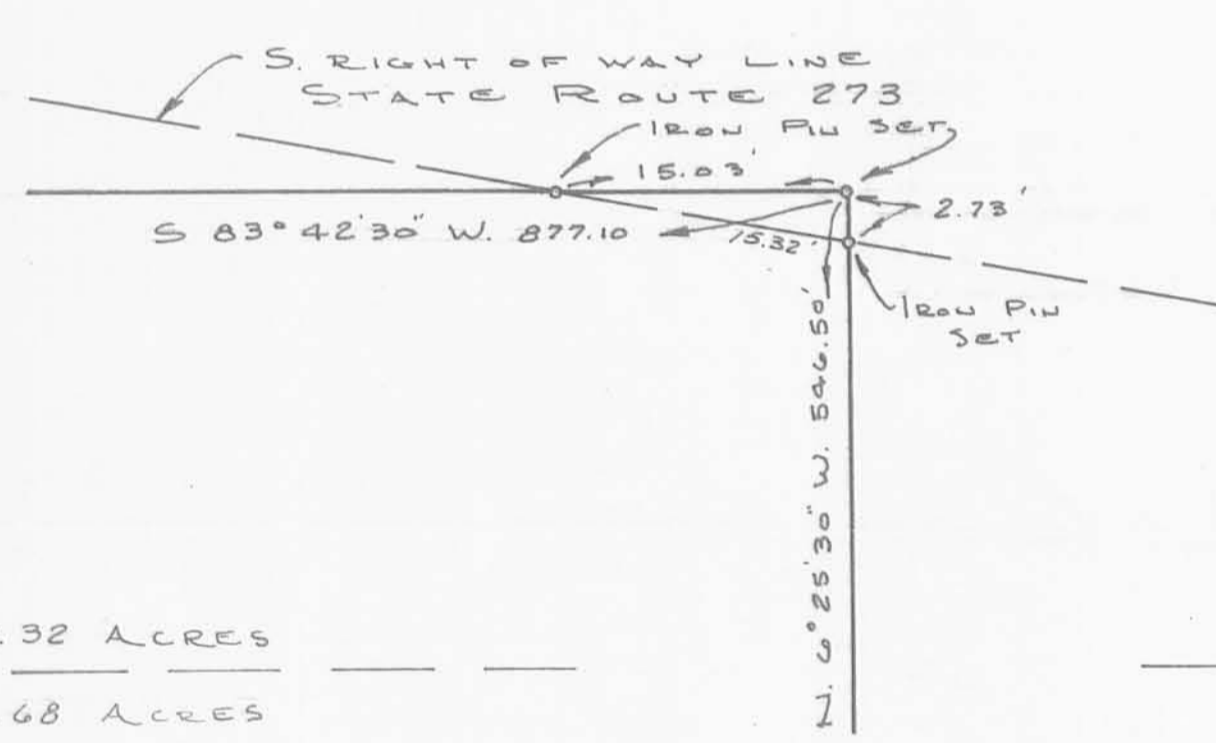


JAMES E. DUFF

CORPORATION LINE - BELLE CENTER & SOUTH LINE V.M.S. 13116

S. 83° 42' 30" W. 877.10

SEE DETAIL



V.M.S. 14568 ~ 5.32 ACRES
 V.M.S. 9973 ~ 5.68 ACRES

WARREN J. LILES ET. UX.

S. 6° 25' 30" E. 546.50

N. 6° 25' 30" W. 546.50

VIRGINIA LILES HARRIS

IRON PIN SET

N. 83° 42' 30" E. 877.40

IRON PIN SET

A SURVEY OF AN 11.09 ACRE TRACT OUT OF WARREN J. & VIRGINIA LILES 60 ACRES SITUATED IN THE TOWNSHIP OF RICHLAND, COUNTY OF LOGAN, STATE OF OHIO - IN VIRGINIA MILITARY SURVEYS 14568 AND 9973

SURVEYED JUNE 8, 1973 BY: *James E. Blosser*
 S.T. # 1199

CHECKED BY: *Daniel C. Allert, P.S.*
 REG. SUR. No. 5402

5402 IP
 INDEXED ON MAP

Lee Surveying and Mapping Co.



Farm Surveys • Lot Surveys • Topography • Subdivisions • Construction Layout

855 EAST SANDUSKY AVENUE
BELLEFONTAINE, OHIO 43311

(513) 593-5780

CLAYTON M. LEE, P.S.
JEFFREY I. LEE, P.S.

MILLER-McDONALD SURVEY

Lying in V.M.S. 9973, 13116 and 14568, with that portion in V.M.S. 13116 also being a part of the Village of Belle Center, Richland Township, Logan County, Ohio.

Being the northeast part of that 25.352 acres deeded and described in Volume 389, Page 622 of the Logan County Records of Deeds and more particularly described as follows:

Beginning at a railroad spike found on the center-line of State Route 273 at the intersection of the south line of V.M.S. 13116 marking the southeast corner of the Village of Belle Center and the most easterly northeast corner of said 25.352 acres and designated as being Station 263+42.40 in highway records.

THENCE, with the south line of said village and V.M.S. line, S 83°-44' W, a distance of 153.25 feet to an iron rod set on a corner of said 25.352 acres and marking the northwest corner of land lying in the name of H.J. Laughlin.

THENCE, with the east line of said 25.352 acres, S 6°-23' E, a distance of 915.36 feet to an iron rod set at a fence corner.

THENCE, with a fence line, S 89°-58'-20" W, a distance of 442.78 feet to an iron rod set at another fence corner.

THENCE, along said fence and the extension of same, N 4°-08'-40" W, a distance of 968.56 feet to a railroad spike set on the center-line of State Route 273.

THENCE, with said center-line, S 86°-00' E, a distance of 564.72 feet to the point of beginning. Containing 9.313 acres, of which 3.488 acres lie in V.M.S. 9973; 5.183 acres lie in V.M.S. 14568; 0.642 acre lies in V.M.S. 13116 (Village of Belle Center).

Last previous deed reference: Volume 389, Page 622.

Surveyed by:



Clayton M. Lee
Clayton M. Lee
Reg. Surveyor No. 6181
9-24-81

INDEXED ON MAP
5407 2D

SEE Survey 7294



DIVISION OF 25.352 ACRES (Vol. 389, Pg. 622)
 V.M.S. 9973, 13116 & 14568
 PARTIALLY IN THE VILLAGE OF BELLE CENTER,
 RICHLAND TOWNSHIP, LOGAN COUNTY, OHIO

5407 2P
 INDEXED ON MAP

By: *Clayton M. Lee*
 Clayton M. Lee
 Reg. Surveyor 6181
 Sept. 24, 1981



TOLERANCES (EXCEPT AS NOTED)	REVISIONS			DRAWN BY C.M.L.	SCALE 1" = 100'	MATERIAL
	NO.	DATE	BY			
DECIMAL	1			CHK'D	DATE	DRAWING NO. L-867-3
±	2					
FRACTIONAL	3					
±	4					
ANGULAR	5					
±				TRACED	APP'D	