

LESLIE H. GEESLIN

REGISTERED SURVEYOR 5248

P. O. BOX 274

RUSHSVLVANIA, OHIO 43347

TELEPHONE: (937) 468-2793

SCHLABACH SURVEY

December 30, 1997

Tract 1

The following described real estate situated in the State of Ohio, County of Logan, Township of Richland, being part of Virginia Military Survey 9971 and more particularly described as follows:

Beginning at a magnetic nail set in the centerline of County Highway 96 at the southwest corner of Levi R. Schlabach, etux's 0.62 acre tract as described in O. R. Vol. 323 Page 876.

Thence with said centerline S. 82° 00' 00" W. 10.18 feet to a 5/8 inch iron bar set.

Thence N. 18° 54' 31" W. 233.68 feet to a 5/8 inch iron bar set, passing a 5/8 inch iron bar set at 30.55 feet.

Thence N. 82° 00' 00" E. 10.18 feet to a 5/8 inch iron bar set in the west line of R. Marian Banta's 89.26 acre tract as described in O. R. Vol. 347 Page 82.

Thence with said Banta's west line S. 18° 54' 31" E. 233.68 feet to the place of beginning, passing a 5/8 inch iron bar found at the northwest corner of said Schlabach's 0.62 acre tract at 121.88 feet and a 5/8 inch iron bar set in the right of way of said C. H. 96 at 203.13 feet.

Containing 0.054 acre more or less, of which 0.007 acre is in the right of way of C. H. 96.

The above described 0.054 acre tract being in the southeast corner of R. Marian Banta's 28.50 acre tract as described in O. R. Vol. 347 Page 82

Bearings are based on an assumed bearing (S. 82° 00' 00" W.) for the centerline of C. H. 96 in this field survey by Leslie H. Geeslin, Reg. Surveyor 5248 on December 30, 1997.

RICHLANDDADASCHLBH.SAM

INDEXED ON MAP
4978 1D-1



Leslie H. Geeslin

REC'D 2-17-98 SMLY CLK ✓

LESLIE H. GEESLIN

REGISTERED SURVEYOR 5248

P. O. BOX 274

RUSHSVLVANIA, OHIO 43347

TELEPHONE: (937) 468-2793

SCHLABACH SURVEY

December 30, 1997

Tract 2

The following described real estate situated in the State of Ohio, County of Logan, Township of Richland, being part of Virginia Military Survey 9971 and more particularly described as follows:

Beginning at a magnetic nail set in the centerline of County Highway 96 at the southeast corner of Levi Schlabach, et ux's 0.62 acre tract as described in O. R. Vol. 323 page 876.

Thence with said Schlabach's east line N. 7° 55' 58" W. 109.45 feet to a 5/8 inch iron bar found, passing a 5/8 inch iron bar set in the right of way line at 30.00 feet.

Thence with said Schlabach's north line N. 82° 04' 18" W. 256.37 feet to a 5/8 inch iron bar found in the east line of R. Marian Banta's 28.50 acre tract as described in O. R. Vol. 347 Page 82.

Thence with said Banta's east line N. 18° 54' 31" W. 121.88 feet to a 5/8 inch iron bar set.

Thence N. 82° 00' 00" E. 490.14 feet to a 5/8 inch iron bar set.

Thence S. 19° 10' 53" E. 233.89 feet to a 5/8 inch iron bar set in the centerline of said C. H. 96, passing a 5/8 inch iron bar set in the right of way line at 203.31 feet.

Thence with the centerline of said C. H. 96 S. 82° 00' 00" W. 256.19 feet to the place of beginning.

Containing 1.966 acres more or less of which 0.174 acre is in the right of way of County Highway 96.

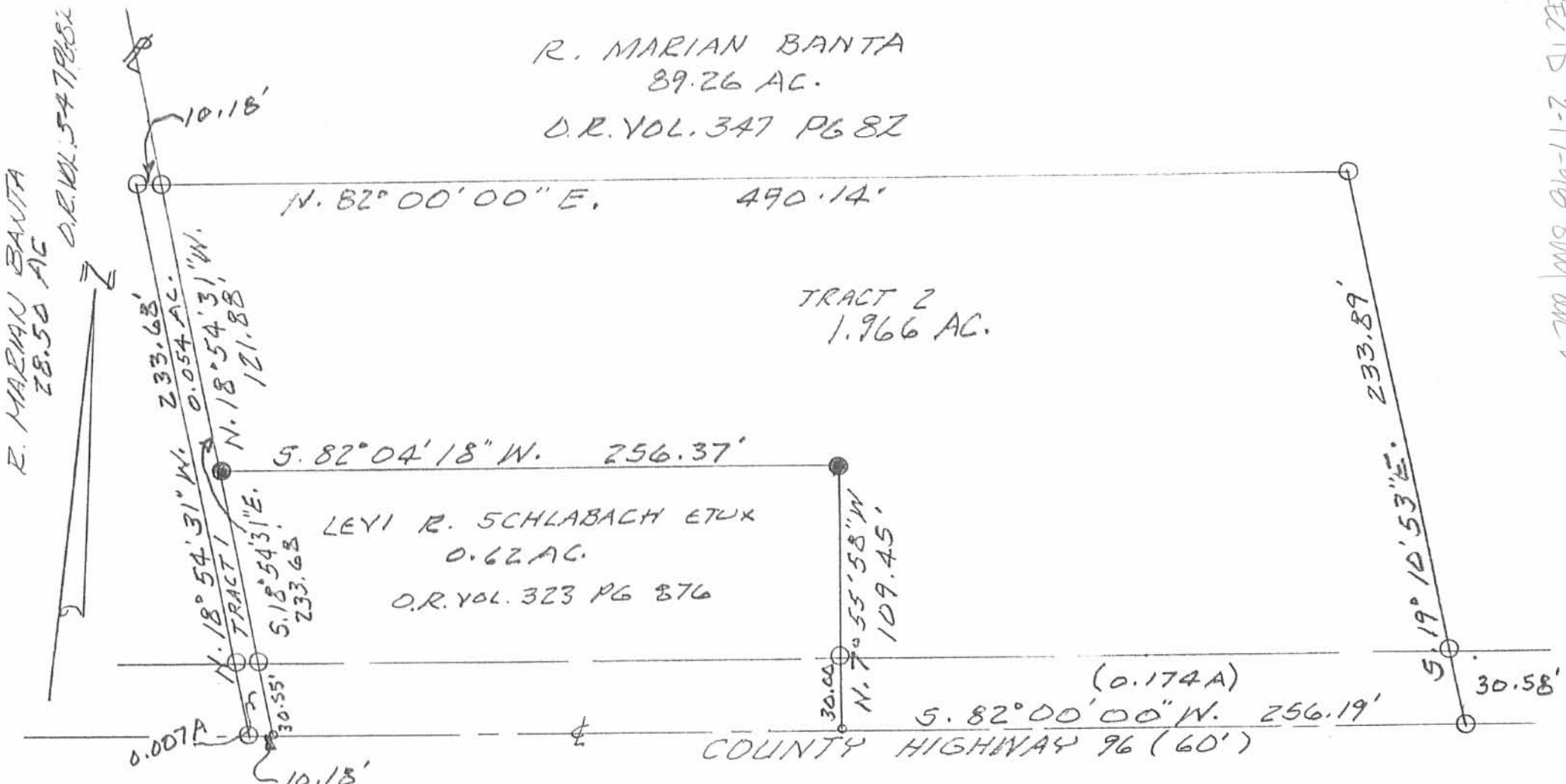
The above described 1.966 acre tract being part of R. Marian Banta's 89.26 acre tract as described in O. R. Vol. 347 page 82.

Bearings are based on an assumed bearing (S. 82° 00' 00" W.) for the centerline of County Highway 96 in this field survey by Leslie H. Geeslin, Reg. Surveyor 5249 on December 30, 1997



Leslie H. Geeslin

REC ID 2-17-98 SWM ALL ✓



R. MARIAN BANTA
28.50 AC
D.R. VOL. 547 P. 82

R. MARIAN BANTA
89.26 AC.
D.R. VOL. 347 P. 82

TRACT 2
1.966 AC.

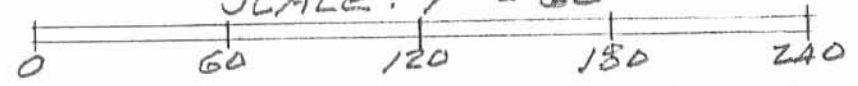
LEYI R. SCHLABACH ET UX
0.62 AC.
D.R. VOL. 323 P. 876

(0.174A)
5.82° 00' 00" N. 256.19'
COUNTY HIGHWAY 96 (60')

- LEGEND:
- = 5/8" IRON BAR FOUND
 - = 5/8" IRON BAR SET
 - = MAGNETIC NAIL SET

SURVEY OF 0.054 ACRE & 1.966 ACRE
TRACTS IN V.M.S. 9971, RICHLAND
TOWNSHIP, LOGAN COUNTY, OHIO
FOR LEVI SCHLABACH.
DECEMBER 30, 1997

SCALE: 1" = 60'



Leslie H. Geeslin
 LESLIE H. GEESLIN
 RUSHESYLVANIA, OHIO
 PH 937-468-2793

INDEXED ON MAP
 4970 IP

BANTA SURVEY

December 11, 1971

The following described real estate situated in Virginia Military Survey No. 9971, Richland Township, Logan County, Ohio and being more particularly described as follows:

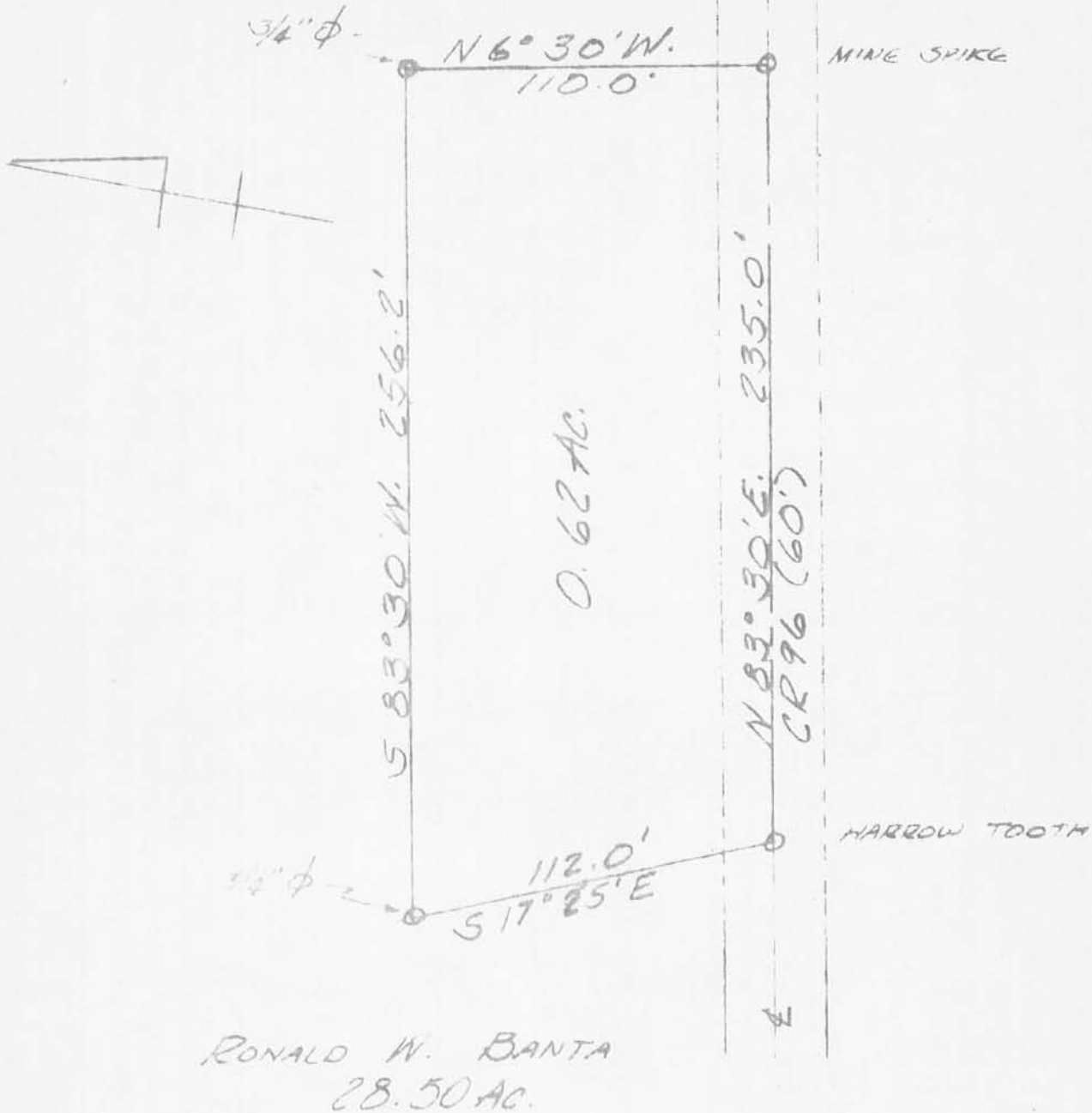
Beginning at an iron bar in the centerline of County Road No. 96 at the southeast corner of Ronald W. Banta's 28.50 acre tract; thence with said centerline N. 83° 30' E. 235.0 feet to an iron bar; thence N. 6° 30' W. 110.0 feet to an iron bar; thence S. 83° 30' W. 256.2 feet to an iron bar in the east line of Ronald W. Banta's 28.50 acre tract; thence with said east line S. 17° 25' E. 112.0 feet to the place of beginning.

Containing 0.62 acres more or less.

~~east~~ ^{WEST} The above described 0.62 acre being in the south-east corner of Seth L. Snyder's 89.88 acre tract.

INDEXED ON MAP

4978



REF. D-17/P-27
 SCALE 1" = 50'

BANTA SURVEY
 DECEMBER 11, 1970
 V.M.S. 9971
 RICHLAND TOWNSHIP
 LOGAN COUNTY, OHIO

INDEXED ON MAP

4978

2P
 LESLIE H. GEESUN
 REG. SURVEYOR 5248

LEGAL DESCRIPTION

Situated in the State of Ohio, County of Logan, Township of Richland, V.M.S. 9971: Beginning at an iron bar in the centerline of County Road No. 96 at the southeast corner of the 40 acre tract excepted from 130 acres as described in Deed Vol. 175, page 410; thence with said centerline N. 83 deg. 30' E. 235.0 feet to an iron bar; thence N. 6 deg. 30' W. 110.0 feet to an iron bar; thence S. 83 deg. 30' W. 256.2 feet to an iron bar in the east line of said 40 acre tract; thence with said east line S. 17 deg. 25' E. 112.0 feet to the place of beginning. Containing 0.62 acres, more or less.

The above described 0.62 acre being out of the southwest corner of Seth L. Snyder's 89.88 acre tract.

BANTA SURVEY

Amendment to Legal Description


June 3, 1983

V.M.S. 9971

RICHLAND TOWNSHIP

LOGAN COUNTY, OHIO

This description prepared for and at the direction of Leslie H. Geeslin, Registered Surveyor #5248.



Leslie H. Geeslin
Registered Surveyor #5248

(4978) 30

INDEXED ON MAP

12-17-13

Lee Surveying and Mapping Co., Inc.



Land Surveys • Topography • Subdivisions • Construction Layout

117 N. Madriver St.
Bellefontaine OH 43311



Phone: (937) 593-7335
Fax: (937) 593-7444
surveys@lsminc.us

BANTA 0.989 ACRE

Lying in Virginia Military Survey 9971, Richland Township, Logan County, Ohio.

Being out of the R. Marian Banta 89.38 acre tract as deeded and described in Official Record 347, Page 82, Parcel II of the Logan County Records of Deeds and being more particularly described as follows:

Commencing at a 1 inch iron bar found at the intersection of center-lines of County Highway 97 (60 feet wide) and County Highway 96 (60 feet wide).

THENCE, with the center-line of County Highway 97, N 28°-11'-10"W, a distance of 2498.37 feet to a 1 inch iron pipe found.

THENCE, with the south line of the Ronald C. Roebuck 73.65 acre tract (O.R. 369, Pg. 688), S 82°-34'-06"W, a distance of 1147.38 feet to a point in the center-line of the south fork of the Miami River, referenced by a 5/8 inch iron rod set, S 82°-34'-06"W, a distance of 156.00 feet, at the TRUE POINT OF BEGINNING, passing a 5/8 inch iron rod set at 32.08 feet.

THENCE, with the center-line of the south fork of the Miami River, S 34°-04'-21"W, a distance of 375.89 feet to a point, referenced by a 5/8 inch iron rod set at that bears N 15°-35'-44"W, a distance of 39.23 feet.

THENCE, with the east line of the Titus Roy Schlabach and Ella Ivy Schlabach 76.087 acre tract (O.R. 1053, Pg. 292), N 18°-51'-37"W, a distance of 287.20 feet to a 5/8 inch iron rod set.

THENCE, with the south line of said 73.65 acre tract, N 82°-34'-06"E, a distance of 306.00 feet to the point of beginning, passing a 5/8 inch iron rod set at 150.00 feet.

Containing 0.989 acre.

Property is subject to any and all previous easements and rights-of-way of record.

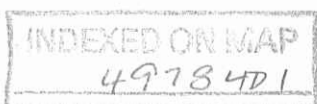
The basis for bearings is the center-line of County Highway 97 being, S 28°-11'-10"E, , and all other bearings are from angles and distances measured in a field survey by Lee Surveying and Mapping Co., Inc. on December 10, 2013.



Description prepared by:

William K. Bruce
Professional Surveyor 7437
December 10, 2013

L-56531113



12-19-13

Lee Surveying and Mapping Co., Inc.



APPROVED

Land Surveys • Topography • Subdivisions • Construction Layout

117 N. Madriver St.
Bellefontaine OH 43311



Phone: (937) 593-7335
Fax: (937) 593-7444
surveys@lsminc.us

BANTA 40.491 ACRES

Lying in Virginia Military Survey 9971, Richland Township, Logan County, Ohio.

Being out of the R. Marian Banta 89.38 acre tract and 28 acre tract as deeded and described in Official Record 347, Page 82, Parcel II and Parcel I, Tract 1, of the Logan County Records of Deeds and being more particularly described as follows:

Commencing at a 1 inch iron bar found at the intersection of center-lines of County Highway 97 (60 feet wide) and County Highway 96 (60 feet wide).

THENCE, with the center-line of County Highway 96, S 81°-56'-24"W, a distance of 1872.60 feet to a 5/8 inch iron rod found at the TRUE POINT OF BEGINNING.

THENCE, With the center-line of County Highway 96, S 81°-56'-24"W, a distance of 720.69 feet to a MAG nail set.

THENCE, with the east line of the Titus Roy Schlabach and Ella Ivy Schlabach 76.087 acre tract (O.R. 1053, Pg. 292), N 18°-45'-17"W, a distance of 1515.52 feet to a point, passing 5/8 inch iron rods set at 30.53 feet and 1480.00 feet.

THENCE, with the south lines of the said 76.087 acre tract and the center-line of the south fork of the Miami River the following two courses:

N 36°-34'-14"E, a distance of 110.39 feet to a point.

N 54°-57'-10"E, a distance of 105.90 feet to a point.

THENCE, S 35°-02'-50"E, a distance of 95.00 feet to a 5/8 inch iron rod set.

THENCE, N 73°-08'-54"E, a distance of 306.85 feet to a 5/8 inch iron rod set.

THENCE, N 86°-04'-15"E, a distance of 196.00 feet to a 5/8 inch iron rod set.

THENCE, N 70°-45'-19"E, a distance of 242.16 feet to a 5/8 inch iron rod set.

THENCE, S 53°-34'-43"E, a distance of 394.50 feet to a 5/8 inch iron rod set.

THENCE, S 19°-34'-56"E, a distance of 1127.85 feet to a 5/8 inch iron rod found.

THENCE, with the north lines of the Levi R. Schlabach and Ruth Schlabach 1.966 acre and 0.054 acre tract (O.R. 354, Pg. 826, Tracts II and I), S 81°-56'-32"W, a distance of 500.33 feet to a 5/8 inch iron rod found.

INDEXED ON MAP
4978 402

Lee Surveying and Mapping Co., Inc.

Land Surveys • Topography • Subdivisions • Construction Layout

117 N. Madriver St.
Bellefontaine OH 43311



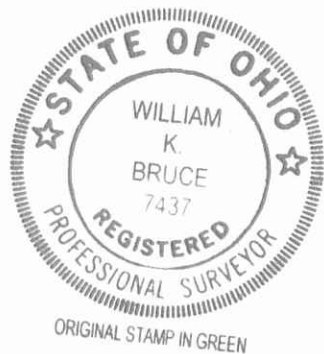
Phone: (937) 593-7335
Fax: (937) 593-7444
surveys@lsmine.us

THENCE, with the west line of the said 0.054 acre tract, S 18°-57'-47"E, a distance of 233.61 feet to the point of beginning, passing a 5/8 inch iron rod found at 203.06 feet.

Containing 40.491 of which 0.496 acre is within the highway right-of-way.

Property is subject to any and all previous easements and rights-of-way of record.

The basis for bearings is the center-line of County Highway 97 being, S 28°-11'-10"E, , and all other bearings are from angles and distances measured in a field survey by Lee Surveying and Mapping Co., Inc. on December 10, 2013.

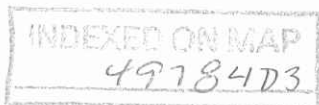


Description prepared by:

William K. Bruce

William K. Bruce
Professional Surveyor 7437
December 10, 2013
Revised December 18, 2013

L-56531113



12-17-13

Lee Surveying and Mapping Co., Inc.



Land Surveys • Topography • Subdivisions • Construction Layout

117 N. Madriver St.
Bellefontaine OH 43311



Phone: (937) 593-7335
Fax: (937) 593-7444
surveys@lsminc.us

BANTA 3.445 ACRES

Lying in Virginia Military Survey 9971, Richland Township, Logan County, Ohio.

Being out of the R. Marian Banta 89.38 acre tract as deeded and described in Official Record 347, Page 82, Parcel II of the Logan County Records of Deeds and being more particularly described as follows:

Commencing at a 1 inch iron bar found at the intersection of center-lines of County Highway 97 (60 feet wide) and County Highway 96 (60 feet wide).

THENCE, with the center-line of County Highway 97, N 28°-11'-10"W, a distance of 1100.00 feet to a MAG nail set at the TRUE POINT OF BEGINNING.

THENCE, S 58°-21'-37"W, a distance of 441.40 feet to a 5/8 inch iron rod set, passing a 5/8 inch iron rod set at 30.05 feet.

THENCE, S 38°-05'-12"W, a distance of 230.06 feet to a 5/8 inch iron rod set.

THENCE, N 28°-11'-10"W, a distance of 297.36 feet to a 5/8 inch iron rod set.

THENCE, N 58°-21'-37"E, a distance of 652.39 feet to a MAG nail set, passing a 5/8 inch iron rod set at 622.34 feet.

THENCE, with the center-line of County Highway 97, S 28°-11'-10"E, a distance of 217.50 feet to the point of beginning.

Containing 3.445 acres of which 0.150 acre is within the highway right-of-way.

Property is subject to any and all previous easements and rights-of-way of record.

The basis for bearings is the center-line of County Highway 97 being, S 28°-11'-10"E, , and all other bearings are from angles and distances measured in a field survey by Lee Surveying and Mapping Co., Inc. on December 10, 2013.

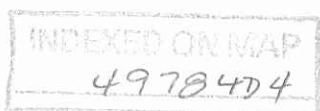


Description prepared by:

William K. Bruce

William K. Bruce
Professional Surveyor 7437
December 10, 2013

L-56531113



12-17-13

Lee Surveying and Mapping Co., Inc.



APPROVED

Land Surveys • Topography • Subdivisions • Construction Layout

117 N. Madriver St.
Bellefontaine OH 43311



Phone: (937) 593-7335
Fax: (937) 593-7444
surveys@lsminc.us

BANTA 70.974 ACRES

Lying in Virginia Military Survey 9971, Richland Township, Logan County, Ohio.

Being out of the R. Marian Banta 89.38 acre tract, 28 acre tract and all of the 2 acre tract as deeded and described in Official Record 347, Page 82, Parcel II and Parcel I, Tract 1 and Tract 2, of the Logan County Records of Deeds and being more particularly described as follows:

Commencing at a 1 inch iron bar found at the intersection of center-lines of County Highway 97 (60 feet wide) and County Highway 96 (60 feet wide).

THENCE, with the center-line of County Highway 96, S 81°-56'-24"W, a distance of 260.72 feet to a MAG nail set at the TRUE POINT OF BEGINNING.

THENCE, with the center-line of County Highway 96, S 81°-56'-24"W, a distance of 1110.40 feet to a 5/8 inch iron rod found.

THENCE, with the east line of the Levi R. Schlabach and Ruth Schlabach 1.966 acre tract (O.R. 354, Pg. 826, Tract II), N 19°-14'-24"W, a distance of 233.81 feet to a 5/8 inch iron rod found, passing a 5/8 inch iron rod found at 30.58 feet.

THENCE, N 19°-34'-56"W, a distance of 1127.85 feet to a 5/8 inch iron rod set.

THENCE, N 53°-34'-43"W, a distance of 394.50 feet to a 5/8 inch iron rod set.

THENCE, S 70°-45'-19"W, a distance of 242.16 feet to a 5/8 inch iron rod set.

THENCE, S 86°-04'-15"W, a distance of 196.00 feet to a 5/8 inch iron rod set.

THENCE, S 73°-08'-54"W, a distance of 306.85 feet to a 5/8 inch iron rod set.

THENCE, N 35°-02'-50"W, a distance of 95.00 feet to a point.

THENCE, with the center-line of the south fork of the Miami River and the south line of the Titus Roy Schlabach and Ella Ivy Schabach 76.087 acre tract (O.R. 1053, Pg. 292) the following seven courses:

N 39°-06'-12"E, a distance of 100.00 feet to a point.

N 29°-22'-14"E, a distance of 100.60 feet to a point, referenced by a 5/8 inch iron rod set that bears S 60°-37'-45"E, a distance of 35.00 feet.

N 41°-22'-13"E, a distance of 100.50 feet to a point.

N 33°-55'-11"E, a distance of 100.00 feet to a point, referenced by a 5/8 inch iron rod set that bears S 56°-04'-50"E, a distance of 35.00 feet.

N 36°-48'-13"E, a distance of 100.00 feet to a point.

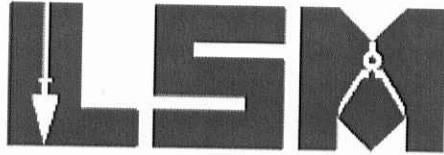
N 33°-22'-12"E, a distance of 100.00 feet to a point, referenced by a 5/8 inch iron rod set that bears S 56°-37'-46"E, a distance of 35.00 feet.

INDEXED ON MAP
4978 475

Lee Surveying and Mapping Co., Inc.

Land Surveys • Topography • Subdivisions • Construction Layout

117 N. Madriver St.
Bellefontaine OH 43311



Phone: (937) 593-7335
Fax: (937) 593-7444
surveys@lsminc.us

N 35°-39'-14"E, a distance of 42.05 feet to a point, referenced by a 5/8 inch iron rod set that bears N 15°-35'-44"W, a distance of 39.23 feet.

THENCE, with the center line of the south fork of the Miami River, N 34°-04'-21"E, a distance of 375.89 feet to a point referenced by a 5/8 inch iron rod set S 82°-34'-06"W, a distance of 156.00 feet.

THENCE, with the south line of the Ronald C. Roebuck 73.65 acre tract (O.R. 369, Pg. 688), N 82°-34'-06"E, a distance of 1147.38 feet to a 1 inch iron pipe found, passing a 5/8 inch iron rod set at 1115.30 feet.

THENCE, with the center-line of County Highway 97, S 28°-11'-10"E, a distance of 1180.87 feet to a MAG nail set.

THENCE, S 58°-21'-37"W, a distance of 652.39 feet to a 5/8 inch iron rod set, passing a 5/8 inch iron rod set at 30.05 feet.

THENCE, S 28°-11'-10"E, a distance of 297.36 feet to a 5/8 inch iron rod set.

THENCE, N 38°-05'-12"E, a distance of 230.06 feet to a 5/8 inch iron rod set.

THENCE, N 58°-21'-37"E, a distance of 441.40 feet to a MAG nail set, passing a 5/8 inch iron rod set at 411.35 feet.

THENCE, with the center-line of County Highway 97, S 28°-11'-10"E, a distance of 906.74 feet to a MAG nail set.

THENCE, with the north line of the Dayton Power and Light Company 116.5 acre tract (O.R. 329, Pg. 713, Parcel 5), S 38°-53'-07"W, a distance of 265.80 feet to the point of beginning, passing 5/8 inch iron rods set at 32.58 feet and 221.85 feet.

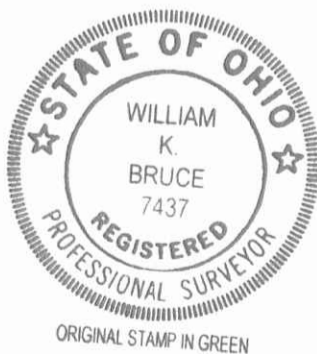
Containing 70.974 acres of which 2.224 acre is within the highway right-of-way.

Property is subject to any and all previous easements and rights-of-way of record.

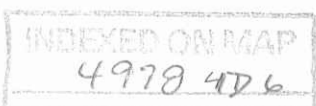
The basis for bearings is the center-line of County Highway 97 being, S 28°-11'-10"E, , and all other bearings are from angles and distances measured in a field survey by Lee Surveying and Mapping Co., Inc. on December 10, 2013.

Description prepared by:

William K. Bruce
Professional Surveyor 7437
December 10, 2013



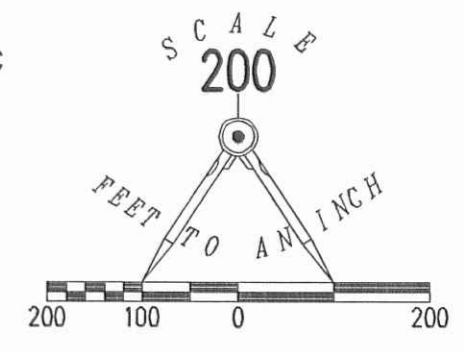
L-56531113



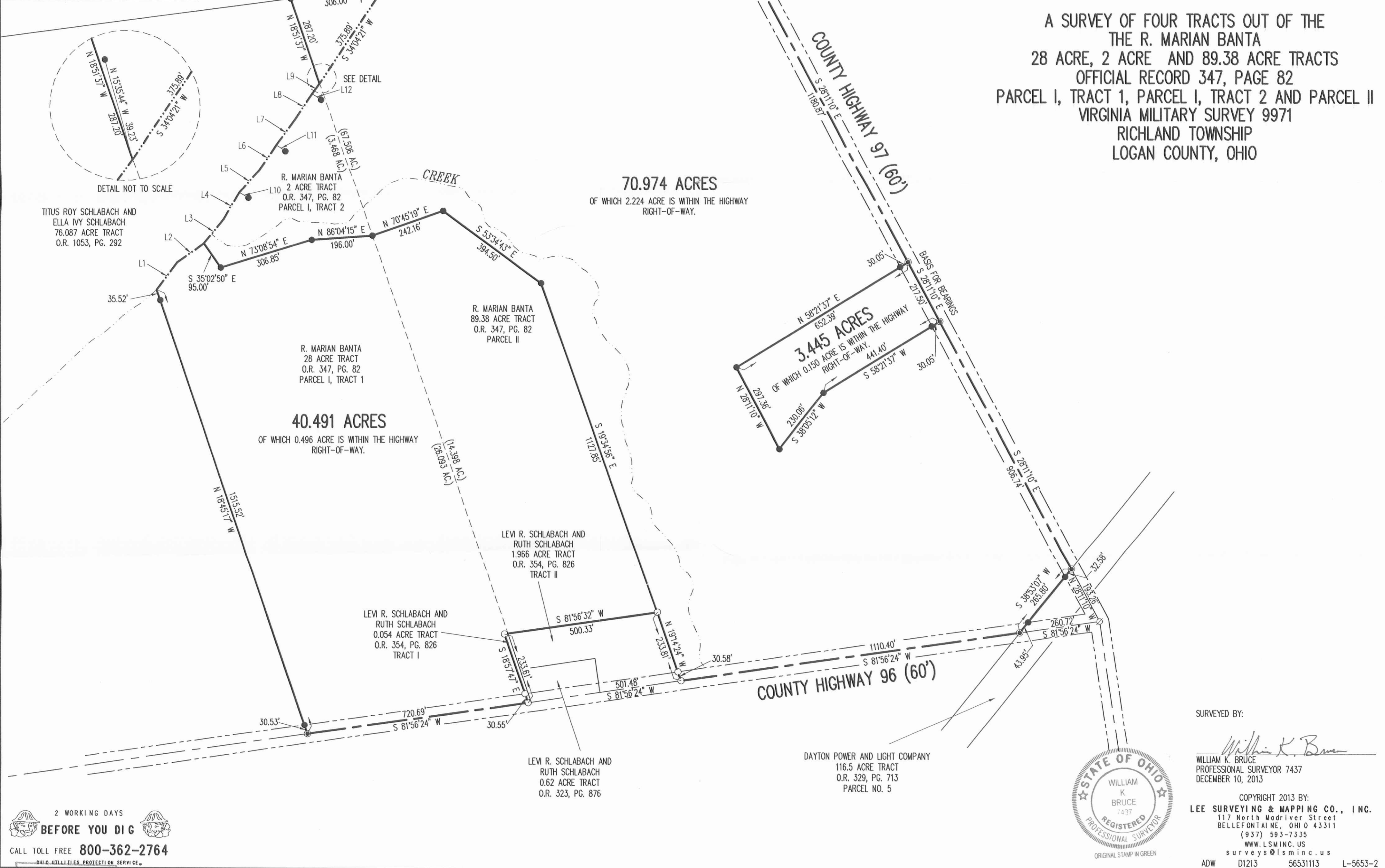
LINE	BEARING	DISTANCE
L1	N 36°34'14" E	110.39'
L2	N 54°57'10" E	105.90'
L3	N 39°06'12" E	100.00'
L4	N 29°22'14" E	100.60'
L5	N 41°22'13" E	100.50'
L6	N 33°55'11" E	100.00'
L7	N 36°48'13" E	100.00'
L8	N 33°22'12" E	100.00'
L9	N 35°39'14" E	42.05'
L10	N 60°37'45" W	35.00'
L11	N 56°04'50" W	35.00'
L12	N 56°37'46" W	35.00'

RONALD C. ROEBUCK
73.65 ACRE TRACT
O.R. 369, PG. 688

- LEGEND
- 5/8 INCH IRON ROD SET WITH PLASTIC I.D. CAP STAMPED "LSM7437"
 - 5/8 INCH IRON ROD FOUND
 - ⊙ MAG NAIL SET
 - ⊙ 1 INCH IRON PIPE FOUND
 - ⊙ 1 INCH IRON BAR FOUND



A SURVEY OF FOUR TRACTS OUT OF THE
THE R. MARIAN BANTA
28 ACRE, 2 ACRE AND 89.38 ACRE TRACTS
OFFICIAL RECORD 347, PAGE 82
PARCEL I, TRACT 1, PARCEL I, TRACT 2 AND PARCEL II
VIRGINIA MILITARY SURVEY 9971
RICHLAND TOWNSHIP
LOGAN COUNTY, OHIO



2 WORKING DAYS BEFORE YOU DIG
CALL TOLL FREE 800-362-2764
OHIO UTILITIES PROTECTION SERVICE

INDEXED ON MAP
4978 4P



SURVEYED BY:
William K. Bruce
WILLIAM K. BRUCE
PROFESSIONAL SURVEYOR 7437
DECEMBER 10, 2013

COPYRIGHT 2013 BY:
LEE SURVEYING & MAPPING CO., INC.
117 North Madriver Street
BELLEFONTAINE, OHIO 43311
(937) 593-7335
WWW.LSMINC.US
surveys@lsminc.us
ADW D123 56531113 L-5653-2