

Bridge 39-5.00 (Brdg. marked 39-4.98)

FB 704

Sl L

182+81.92 90°-45' Lt (181°-30')

179+15.42 22°-43' Rt (45°-26')

173+33.35 22°-08' Lt (44°-16')

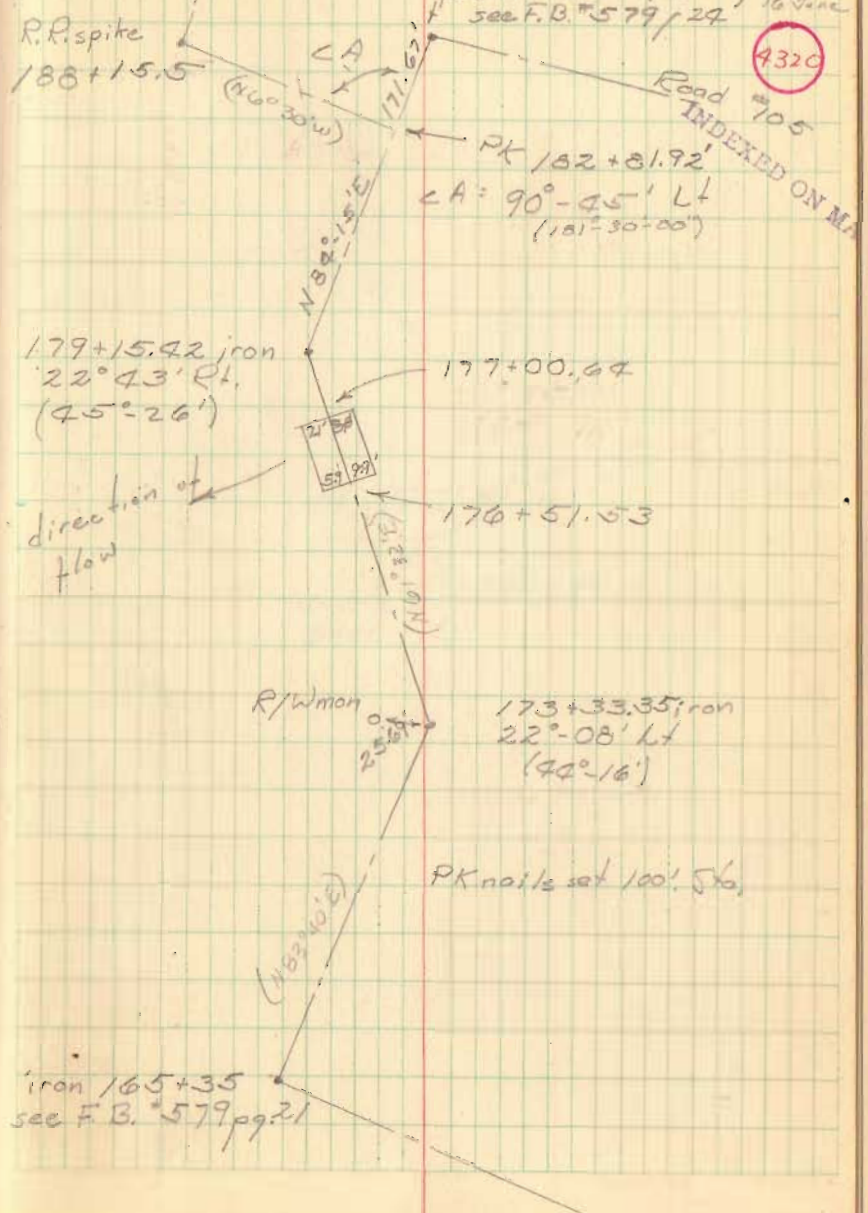
165+35

Nichols
Thompson
Buchenroth

15 June 1906
Sun, windy 70°
K + E rain @ 1:50
found 1" iron (bent) straighten
see F.B. #579/24 16 June

22

4320



R.R. spike
188+15.5

CA

(180°-30')

171.62

PK 182+81.92

CA = 90°-45' Lt
(181°-30'-00')

Road #705
INDEXED ON MAP

179+15.42 iron
22°-43' Rt.
(45°-26')

177+00.64

27.58'
57.39'

direction of
flow

176+51.53

R/W Mon

25.58'

173+33.35 iron
22°-08' Lt
(44°-16')

PK nails set 100' S to

(182°-10')

iron 165+35
see F.B. #579 pg. 21

Bridge 39-5.00

Base Line for X-Sections

FB 704

Nichols
Bachenroth
Thompson

16 June 1966
Cloudy w. sun, breeze 70° 23
K + E

