

SURVEYOR'S CERTIFICATE

The accompanying plat represents a subdivision of land in V.M.S. 13393, Richland Township, Logan County, Ohio. All dimensions are in feet and tenths of feet. • indicates 5/8" bar set. Dimensions on curve are chord distance. The tract contains an area of 286 acres. I hereby certify that the accompanying plat is a correct representation of FERNWOOD NUMBER FIVE, as surveyed April, 1960

Don M. Dutton
Registered Surveyor
No. 4270

DEDICATION

KNOW ALL MEN BY THESE PRESENTS That Willard P. Wren and Don M. Hilliker, proprietors of the land indicated on the accompanying plat have authorized the platting thereof.

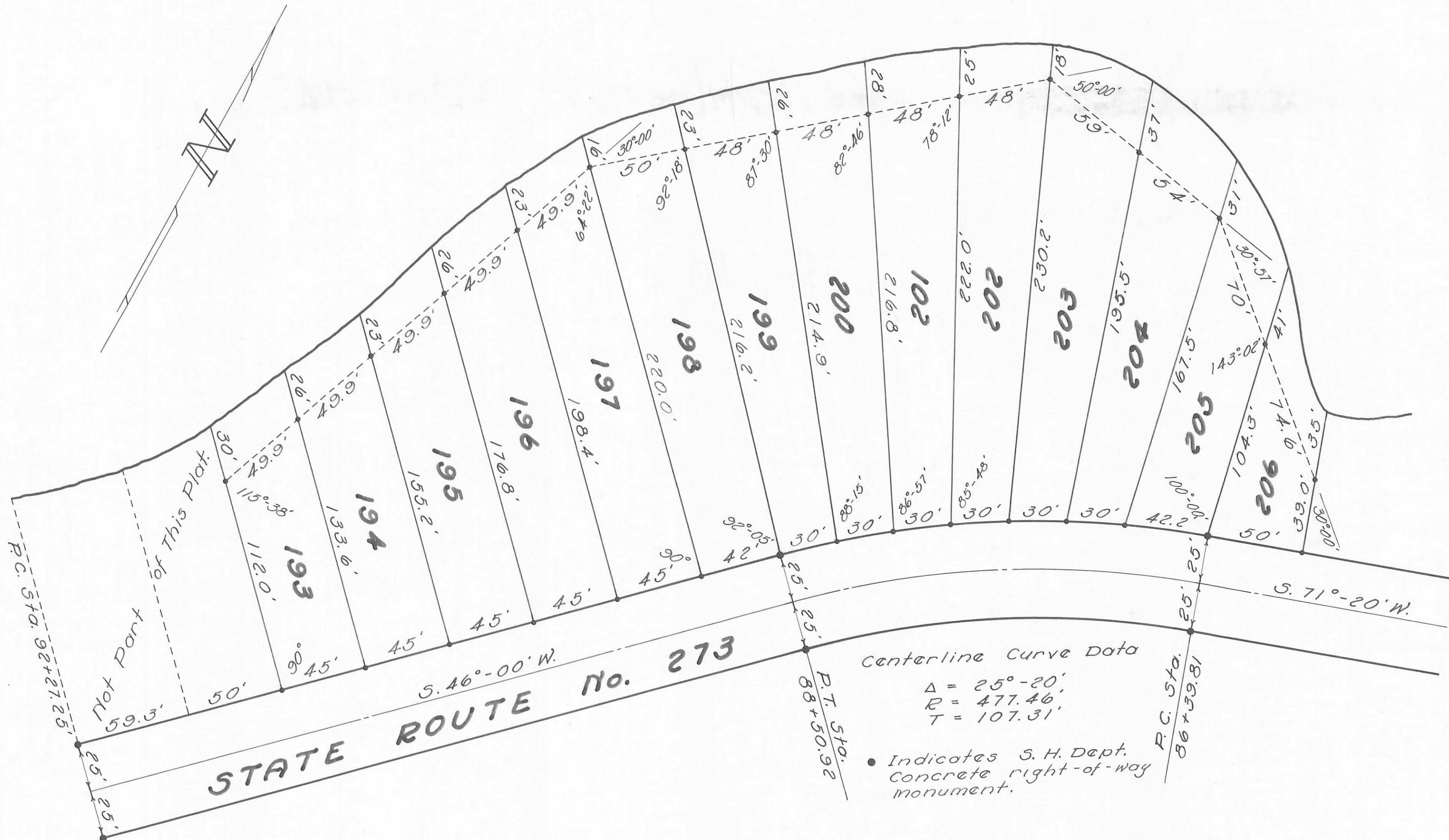
Harry E. Dupert Willard P. Wren
Edgar L. Miller Don Hilliker
Witness

STATE OF OHIO SS
COUNTY OF LOGAN

Be it remembered that on this the 6th day of June, in the year of our Lord One Thousand Nine Hundred and Sixty, before me a notary public in and for said County, personally came Willard P. Wren and Don M. Hilliker, grantors in the foregoing dedication, who acknowledged the signing thereof to be their free and voluntary act and deed.

Agnes M. Miles
Notary Public
November 21, 1962.
My Commission Expires

INDIAN LAKE



Centerline Curve Data
 $\Delta = 25^{\circ}-20'$
 $R = 477.46'$
 $T = 107.31'$
 • Indicates S. H. Dept. Concrete right-of-way monument.

ENGINEER

Approved this 18 day of April 1960.
E. K. Love
Logan County Engineer

ACCEPTANCE

The annexed plat was approved and accepted by the Board of County Commissioners at a regular meeting this 6th day of June 1960.

Foster A. Cole
William R. F. of
Clyde Ramsey
Logan County Commissioners

AUDITOR

The within lots transferred this 6th day of June 1960.

Chas. H. Chamberlain
Logan County Auditor

156546

RECORDER

Received for record at 10:30 o'clock A. M. on this 6th day of June 1960.
 Recorded in Plat Book 4, Vol. 17, Page 75.

Rosemary L. Strayer
Logan County Recorder

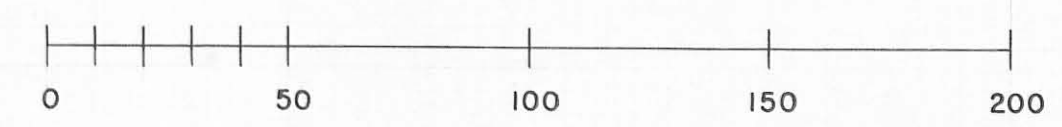
FERNWOOD NUMBER FIVE

V.M.S. 13393 RICHLAND TOWNSHIP

LOGAN COUNTY, OHIO

1960

SCALE 1" = 40'



COUNTY
4047
INDEX NO.
INDEXED ON MAP

INDIAN LAKE

SURVEY OF LOT No. 203

FERNWOOD SUBDIVISION

No. 5

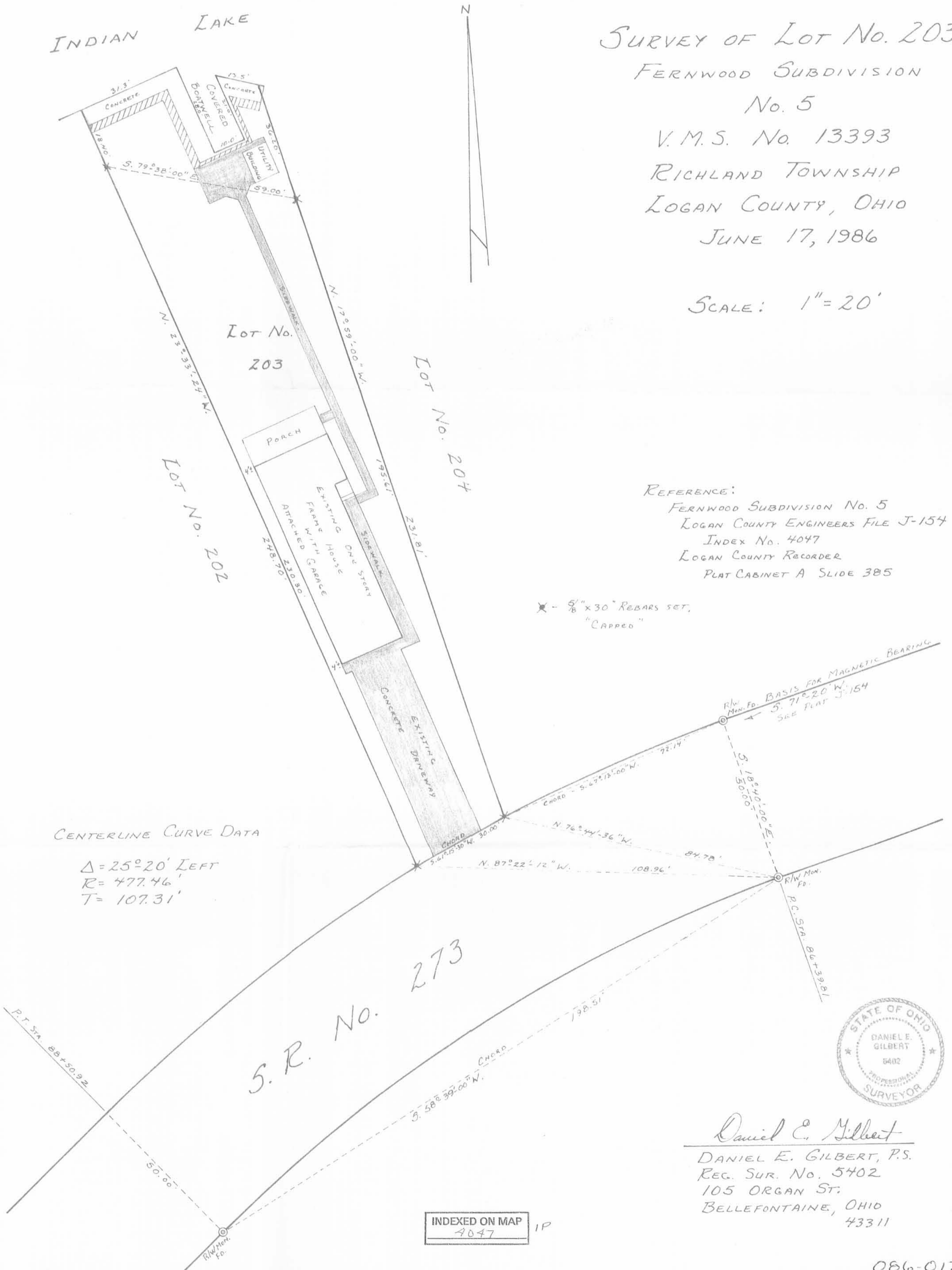
V.M.S. No. 13393

RICHLAND TOWNSHIP

LOGAN COUNTY, OHIO

JUNE 17, 1986

SCALE: 1" = 20'



REFERENCE:
 FERNWOOD SUBDIVISION No. 5
 LOGAN COUNTY ENGINEERS FILE J-154
 INDEX No. 4047
 LOGAN COUNTY RECORDER
 PLAT CABINET A SLIDE 385

* - 5/8" x 30" REBARS SET,
 "CAPPED"

CENTERLINE CURVE DATA

$\Delta = 25^{\circ}20'$ LEFT
 $R = 477.46'$
 $T = 107.31'$



Daniel E. Gilbert
 DANIEL E. GILBERT, P.S.
 REG. SUR. NO. 5402
 105 ORGAN ST.
 BELLEFONTAINE, OHIO
 43311

INDEXED ON MAP
 4047 1P