

FENTON SURVEY
V.M.S. 9951-RICHLAND TWP.

December 14, 1963

The following described real estate situated in Richland Township, Logan County, Ohio and being part of Virginia Military Survey 9951 and more particularly described as follows:

Beginning at an iron pin in the center of County Highway No. 105 and in the east line of Murrey Swetland's 100.00 acre tract; thence with the centerline of County Highway 105 the following three courses; S. 77°15' E. 313.3 feet; thence S. 67°13' E. 199.9 feet; thence S. 52°42' E. 111.8 feet to the west line of Northwood Stone and Asphalt Co. 56.00 acre tract; thence with the west line of said tract, N. 6°41' W. 310.8 feet to a post; thence with the north line of said 56.00 acre tract N. 79°00' E. 1689.2 feet to an iron pin in the center of County Highway 106, at the northeast corner of Byron I. Fullerton's 2.00 acre tract; thence with the centerline of said County Highway No. 106 as shown in Logan County Engineers field book 596, page 62, N. 9°34' W. 595.9 feet to an iron pin; thence S. 80°22' W. 2262.4 feet to a post in the east line of said Swetland's 100.00 acre tract; thence with said east line S. 11°38' E. 639.0 feet to the place of beginning.

Containing 33.72 acres more or less.

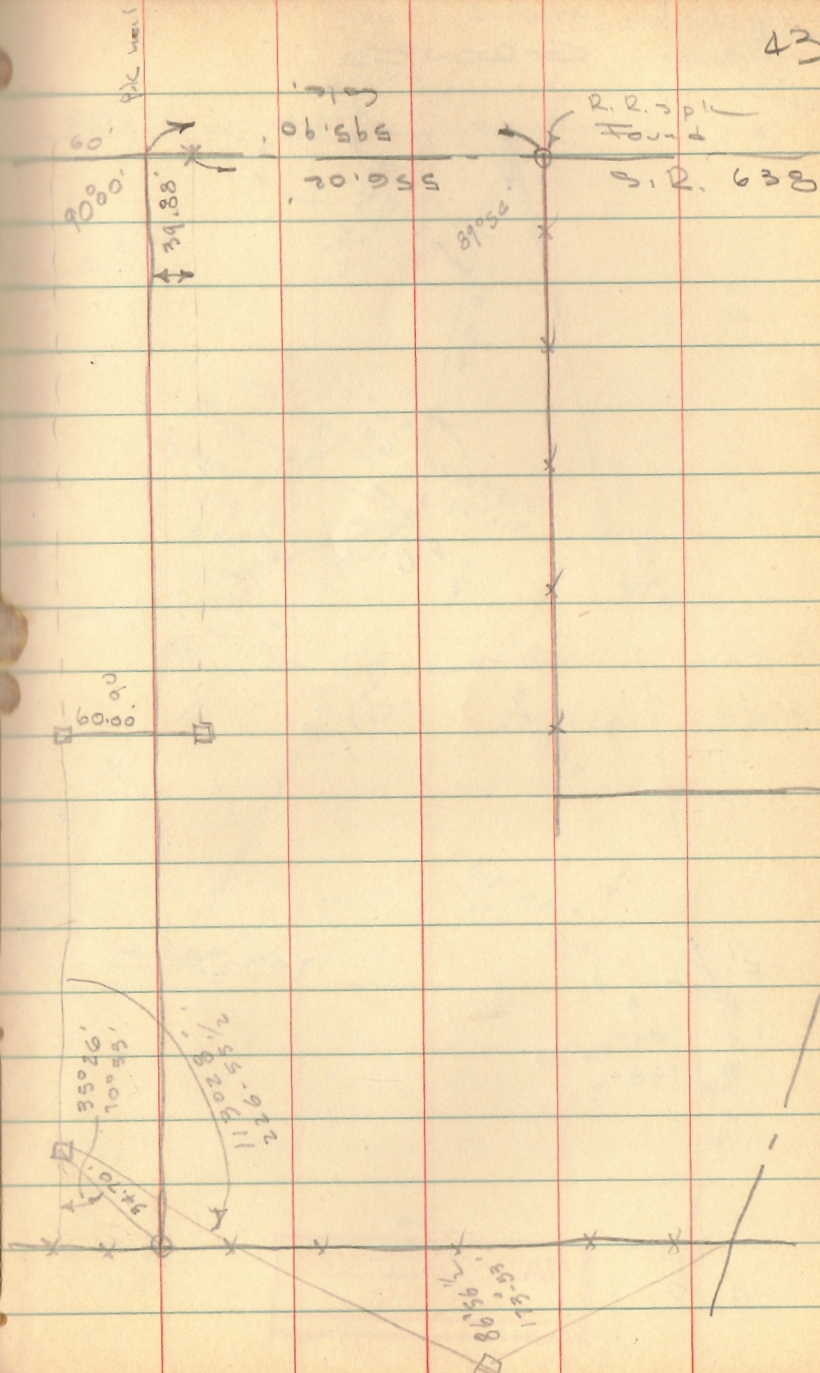
(O.V. Plat Book
3-10-64
D.E.G.)

3664
INDEXED ON MAP
1D

R.

Fenton Survey
Richland Twp

43

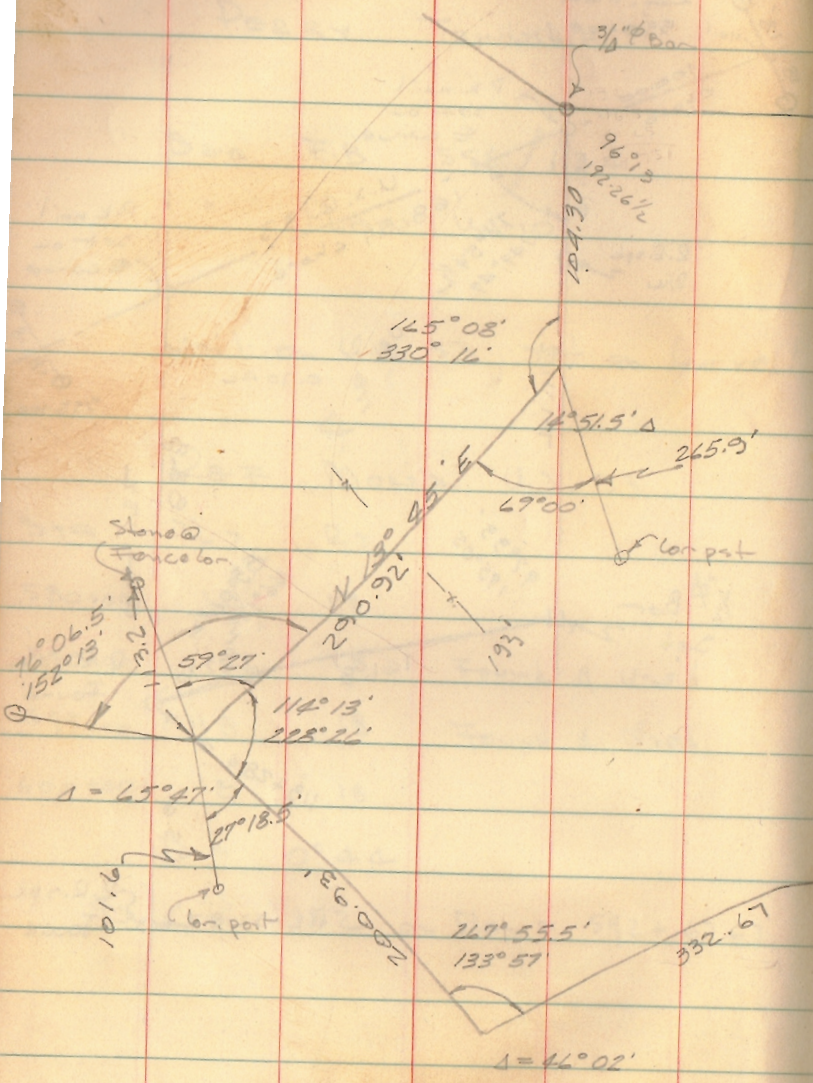


INDEXED ON MAP
3664

FENTON - NORTHWOOD

2/20/68

71



371.21

85° 20

(85° 33)
177° 10

513.88

92° 13.5'
184° 27.5'

Δ = 87° 45.5

189.75

173.25

INDEXED ON MAP
3664

92.0 13.5
184.275

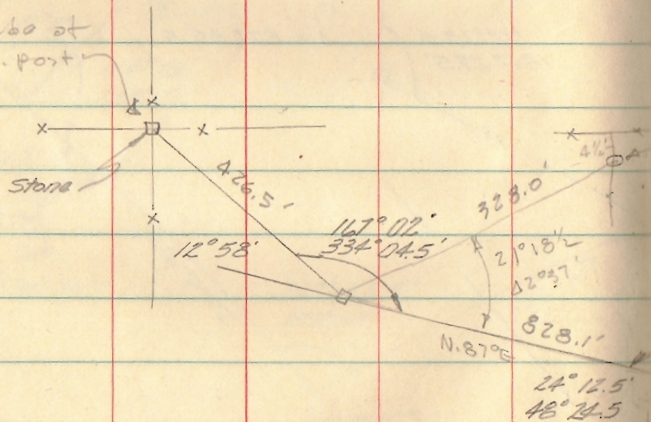
FENTON - NORTHWOOD

Cont'd

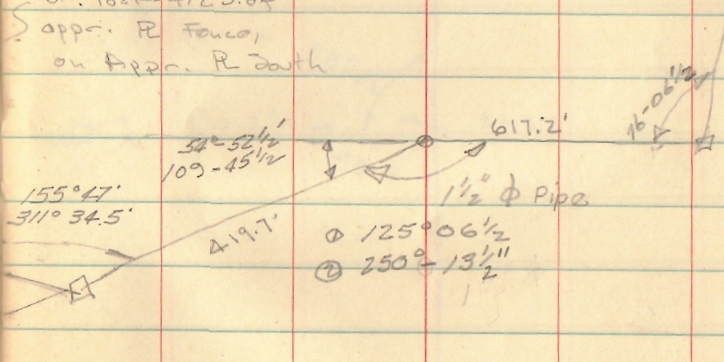
A. Dodson
L. Goslin
J. Whitlow

2/26/65
40° 72

Stone E. side of
large Con. post



Con. Post - 4 1/2" S. of
appr. R. fence,
on Appr. R. South



INDEXED ON MAP
3664

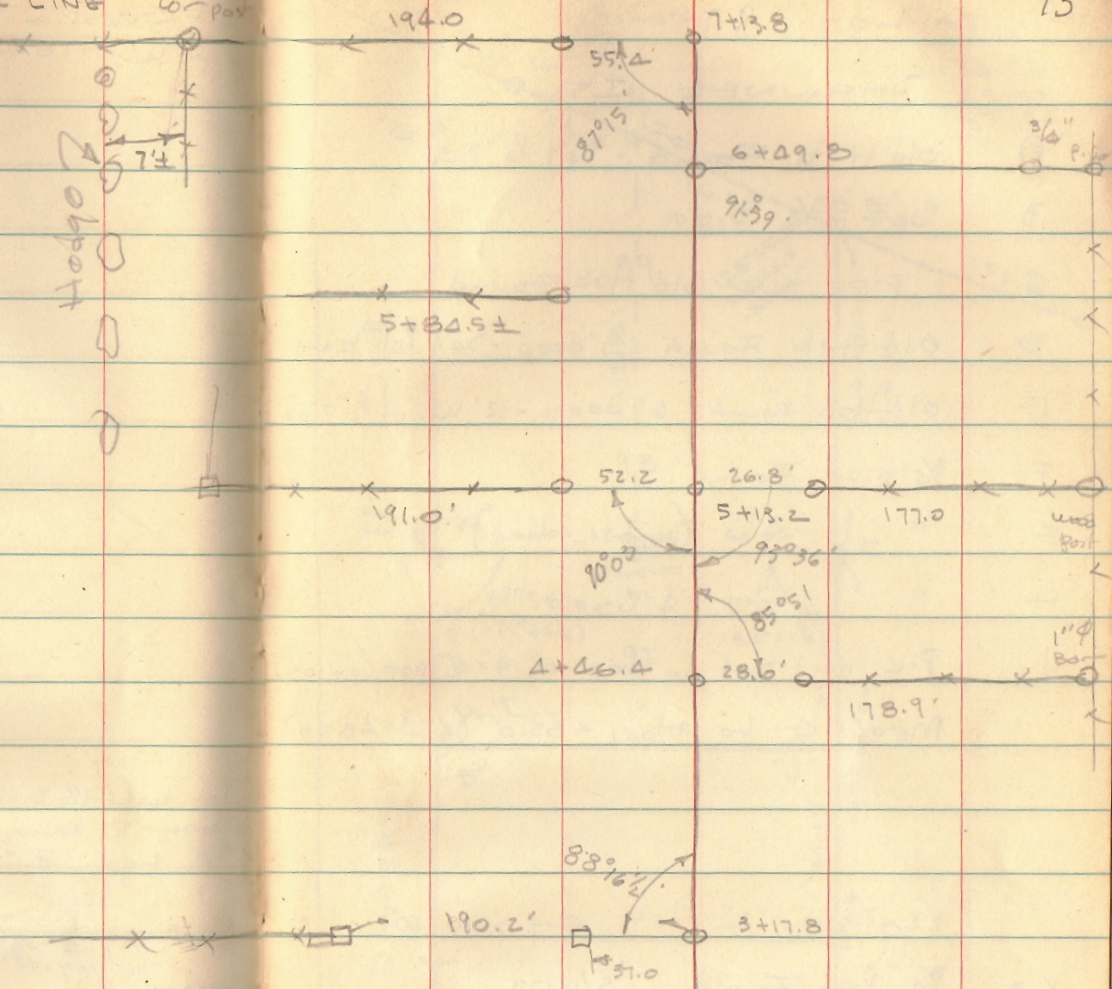
INDEXED ON MAP
3664

NORTHWOOD

RANDOM LINE

wood
lot par

73



INDEXED ON MAP
3664