

Allen Survey - New Richland
Survey to divide Willow St. (vacated)

Began at post S.W. \angle lot #12
checked frontage on Main St.
fits occupation found post S.W.
 \angle lot #7, OK for distance.

Began at post S.E. \angle #13, meas.
to walk at Main St. 135.9,
meas. between walks 50.2.

which would make \angle 4.9 from
walk instead of 3.9, used 3.9;
fits better, walks not parallel
meas. from post S.E. \angle #13
148.5' for W. line Willow St.

Began at fence S. line #10, 16 1/2'
north of post S.E. \angle #13, meas.
289.0 to centerline Walnut St.
Fences S. line of #38 checks OK

Found Iron as shown in
F.B. #516, pg 79 12' under
surface, used for W. line of
Willow St. - From field notes
it is difficult to determine
if iron was set on line of
willow St, I used it as such.

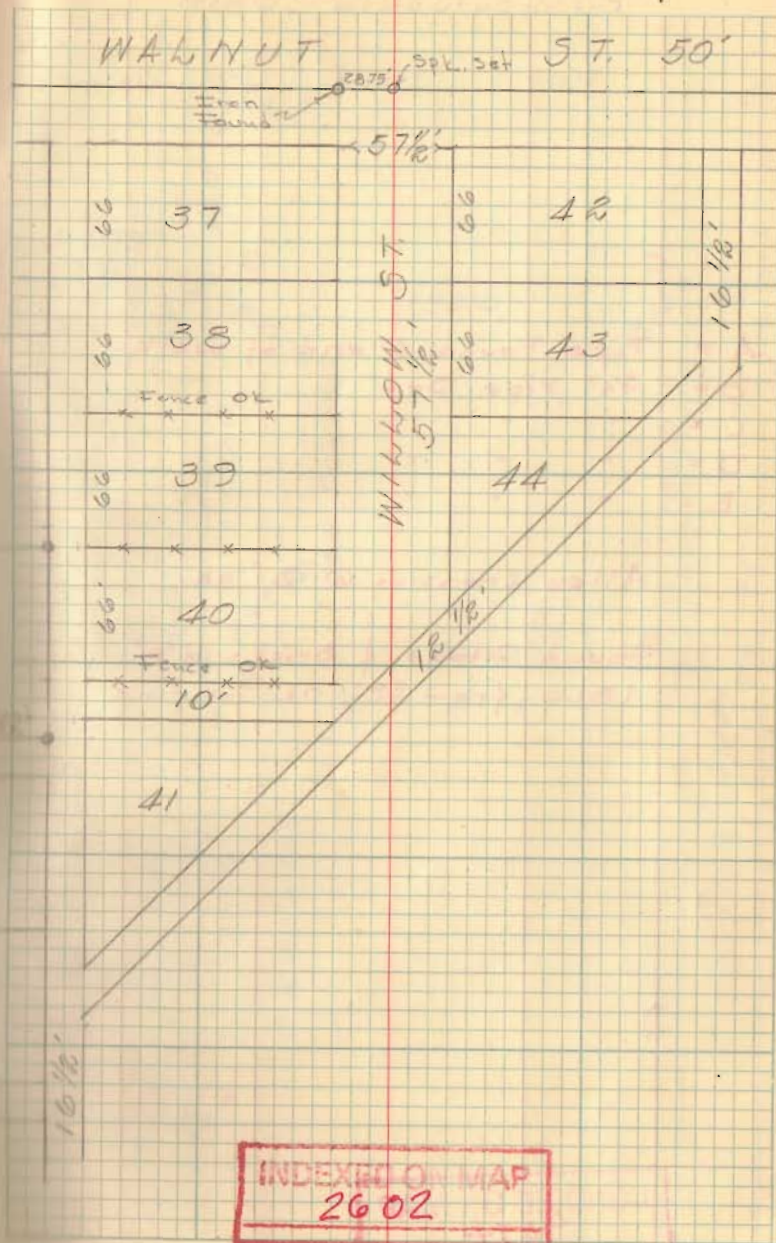
Set RR spk. on $\$$ 28.75 feet from Iron
Found, for $\$$ Willow, set stakes for
fence on this line



D. Dodson
V. Detriab

May 1, 1958

8



INDEXED ON MAP
2602