

McClure & McKinnon

Henry McKinnon ch or Error
 Tom McClure " " "
 Geo Hunter maker "
 Samuel Bayliss " "
 N 80 E

Start 15 links north of stone at S E L 9950
 after set stake 1 move S 2 lks to line
 Stake 2 in line

Bunch at 48 poles

Stake 3 in line

" 5 " "

INDEXED ON MAP

1854

Strike 15 links N of stone at L to Hunter
 & Patterson in south line Surrey 9950

Strike said stone at 6-1-7 = 132,28

Stake 6 in line

7

8

After set 8 more more N 10 lks

Strike cent fence running N from K at 8-6-20

= 172.80 poles

Set stake at fence in line is 25 lks N of line
 from first stone

Strike stone at 11-9-0 = 338 poles being 835
 to Kings 35a, line strikes 34 links N of stone
 set in fence on south, + 29 lks from 2nd
 stone on the line

172.80
 144.40

Surr

to S 2 L King 15-8-30 = 317.20
 that is at L between Hick stump & west oak
 being L to As per Wiley

to L measured from Hick stump to east oak
 and on line of marked trees on east of King
 = 15-9-10 = 318.40

Line strikes north of L 46 links

to line marked trees 58 links

Set stake L & E to McKinnon & Surr to King as follows
 set staff at 10 links north of sta 8 then run to stake at
 cent N + south fence mds from stake in fence
 west 7 links to post thence S 10 E 25 links to
 stake at for corner at K.

Wit. K White @ 10" N 37 1/4 W 24 links

also W. O. 30" N 17 1/2 E 45 links + stone mds from

Exact dist from S 2 L to Surr to K = 8-6-13

= 172.52 poles

1854

INDEXED ON MAP

McClure Aug

Line B, start 11 links west of \angle stake
at K

N 10 W

at 35 poles marked stick 20" east 11 lks

Sta 1 not in

" 2 in line

Set stake at \angle thus find marked W.O.

20" 3 poles south from \angle run from said

W.O. $S 9 \frac{1}{2} W$, also from marked W.O.

20" 4 poles west of \angle run $N 80 E$ to

cross lines & set 2 stake

Strike west of \angle stake 25 links, run 14 links
to next west

Stake 4 in line

True length = $4 - 3 - 33$ lks = 87.32 poles

set stake at \angle

Sta 2 = R = 17.44

" 3 = " = 20.66

" 4 = " = 23.88 west - 24 E

Mid-d = $N 2 \angle$ to McKinnon Stone

W.O. 20 (old line mark) $S 9 \frac{1}{2} E$ 67 links

also Red Oak 10" $N 16 \frac{1}{4} W$ 16 $\frac{1}{2}$ links

Exact variation = 56 = 22' O.K. course $N 9 \frac{1}{2} W$

McKinnon Surv.

Line C starts 14 lks S of \angle stake at d
meas 14 lks S from stone at \angle take course
= $S 81 W$ Dist = 5 pins 0 = 10 poles
from S to E $S 81 W$

Line D start 12 lks south of \angle stake at E

at \angle find marked \angle + W.O. \angle trees

take center between trees set stake

meas 12 links south from stake & take

course to pile 12 links south stone

set stakes in true line that is 12 links

north $S 79 \frac{1}{2} W$ = true cse $S 78 \frac{1}{2} W$

O.K. Dist - S to F = 2-1-2 = 42.08 poles

Mid G = dug $30^\circ S 81 \frac{1}{2} E$ 14 lks

also W.O. $30^\circ N 81 \frac{1}{2} W$ 14 "

at g find W.O. 30° + stump W.O. 30° take

center & drive stake for \angle

stone put in at J - nigger head 10" x 6"

64.6
173.2

McClure

Line E start 10 lks east of stake of J
 find < between W.O. + stump set stake
 meas East - 10 links take course
 = S 10 1/2 E Dist = 1 out - 0.43 lks
 31.72 poles
 g = bit W.O. 30" S 31 1/2 W 7 links

Line F start 25 links south of g
 S 80 W at 50 poles line runs about 12 links
 south from now
 set stake in line east side pike from
 at 4-8-4 97.60
 cut 99.60 poles to west of pike
 set stake in Black line in line then meas
 at 10 W 25 lks then S 80 W to < at
 120 poles set stake for < at h
 more stake as cut above S 8 1/4 E 6 links = 24 poles +
 then S 80 W 2 1/2 links = 10 poles all comp. line
 set stake in true line at 97.60 poles by meas
 from stake as above cut at 20 links
 put in stone line stone 3" x 20" x 10"
 g to h = 120.1

McKinnon Surv.

62.72 8.5 = 7 5- 7 11 5 12
173 35 - 7 55

Line G start 12 links west of stone
 at a meas 12 links west of < stake at
 h take course at 8 3/4 W
 cut pike at 20 poles
 set stake in line at 24 poles
 strike stake h at 3-2-21 = 64.84
 Stake 6 in line diff 4.8 west to line
 " 7 " " " " "
 " 8 " " " " " taken out
 set stake in line in cut ditch at 8-6-30
 = 173.20 = ok dist a to i
 strike stone S E to Gibbys 10 a (found - old pit)
 bears at 7 1/2 E 3 1/4 links at 6-2-25 = lks
 = 125 poles line passes 7 links west of stone
 gain too much east 5 links
 stake at h to more west 2 1/2 links 9 1/2 west
 " 6 " " " 5 " " 8 " "
 " 7 " " " 5 3/4 " 6 1/2 " "
 " 8 " " " 7 " 8 " "
 Total var line G = 7 links too much east
 put in stone at < i at W to McClure stone
 line stone 3" thick 9" wide 2 ft long
 Put in stone at h at W to McKinnon in frame
 line stone 3" x 20" x 11"

McClure ^{Eng}

reset stake at h i.e. S W [&] McClure as follows
 Begin at stake as set on line of fork thence
 S 80° W 2 1/2 links thence S 83 1/2° W 6 links to
 OK [&] as reset stake makes OK dist from
 a to h = 64.6 poles & dist from h to i
 = 108.6 poles ^{set by run} at true [&] h

next-

Measure from i to R.R. spike set in the ancient R.R.
 N 83 1/2° W from true [&] at i = 3 pins & 33 lks = 7.32
 true line of strikes R.R. spike ant. R.R. at 16 links
 east of cent of wooden bent end on R.R.

a to h = 64.60 poles

h to i = 108.60

INDEXED ON MAP

1854

Mackinnon Surv.

True H = start - 20 links south of true [&]
 at i N 80° W [&]

Set stake ^x in line at 24 poles = 19 1/2 reset
 Branch at 35.60 poles

Stake 2 in line 18 3/4
 N 80° E

cont of pike at 3-4-37 = 75.48 poles

Stake 4 in line = 17 1/2

" 6 " " = 16

(set S 3 links but ^{or} 3 lks to old line)

Stake 8 in line that is first line 20 links south of i
 set [&] stake for [&] j thus start at sta 8 line H

run N 9 1/2° W 10 links to true line, thence from
 line i at 86 poles meas S 80° W 9 1/2 lks to post
 & cross lines to [&]

Variation line H = 5 links to south south

true length line H = 8-0-8 = 160.32 f

Post [&] j N 80° W to McClure

N. O. 7" S 53° W 46 links

also N. O. 28" N 55 1/2° E 32 1/2

" N. O. 28" S 9 1/2° E 29 lks

INDEXED ON MAP

1854

McClure End

Line i Start 13 links East of stone at ϵ
 N 9 $\frac{1}{2}$ W
 at 3 poles marked W.O. 30" = 6 links east of line
 " 17 " " " W.O. 10" = 13 " " " "
 " 26 " " " ^{meet} side line Hick 24" = 8 links east to water
 " 32 " " " ^{W.O.} side line = 15 " " " "
 Line i = O.K. N 9 $\frac{1}{2}$ W

Stake 1 in line

- 1 2 " "
- 2 3 " "

After set stake move meet 3 $\frac{1}{2}$ links

Stake 4 in line is 3 $\frac{1}{2}$ meet

" at 86 poles in line

Strike ^{stone} at lat 5-4-42 = 10968

line strikes 10 $\frac{1}{2}$ links east of stone

this stone not certain right

run from stake 80 poles to stone at ϵ

= 1-1-42 = 23.68 poles

True length from ϵ to j = 4-2-46 = 85.74

INDEXED ON MAP

1854

McKinous Surv.

From cent pike to ϵ stone at α = 58-9950
 = 4 poles 33, 60 - 9.32 poles course = N 80 E
 Also from said stone N 85 $\frac{1}{2}$ W 20 poles to
 cent pike at crossing West-south line to
 run 9950, then

1854

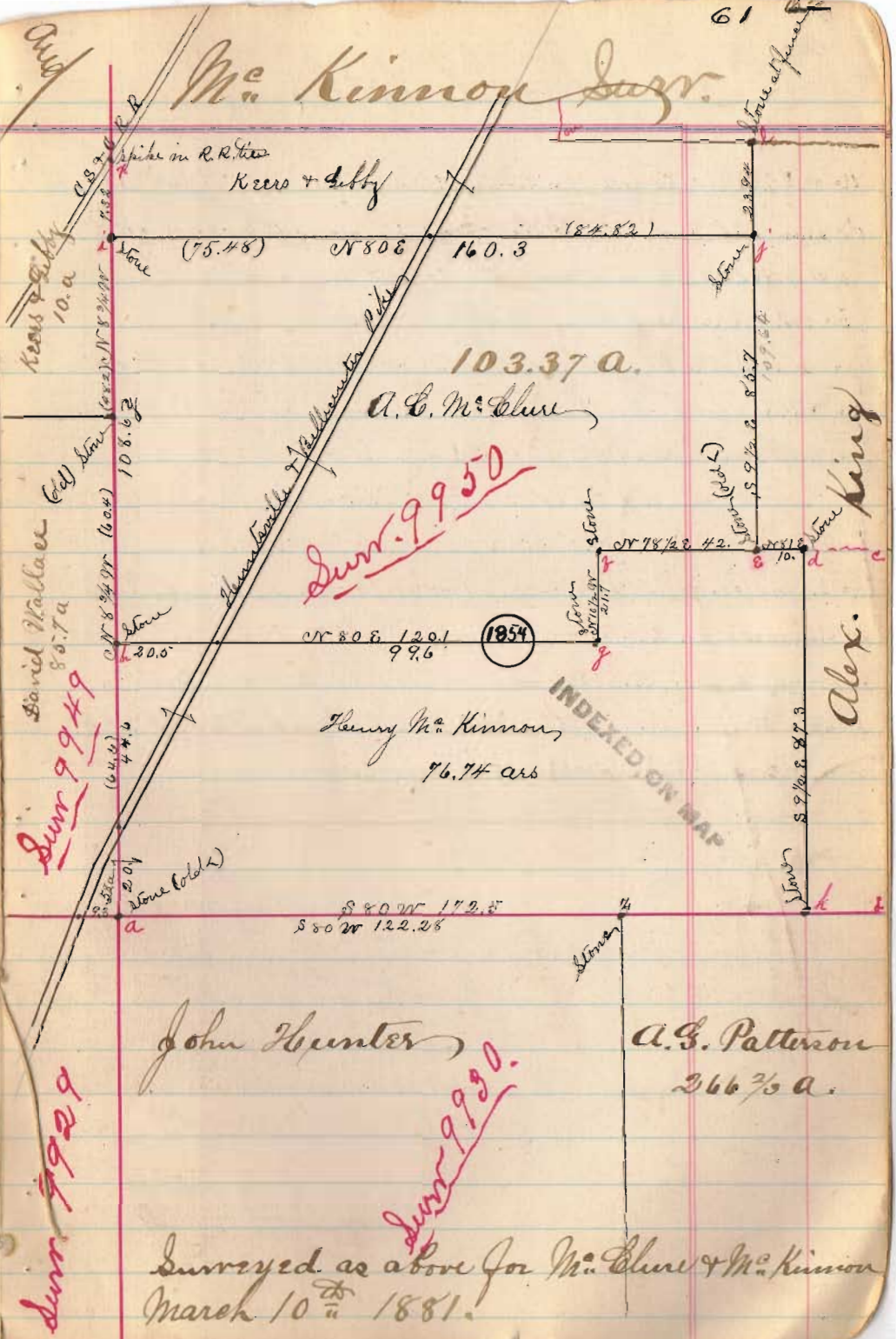
INDEXED ON MAP

Correct Plat M^r. Clure

- a = old stone \angle to surr, nigghead $1/4"$ di.
- d = small stone by self. Wit d = W.O. 28" (old line marked tree) S $9 1/2^\circ$ E 67 links also Red Oak 10" N $16 1/2^\circ$ W 16 1/2 links = see line B.
- e = old stone nig head about $1/4"$ di. = see line C.
- f = nig head stone self 10" x 6" + W.O. 30" N $8 1/2^\circ$ W 14 + Aug 30" S $8 1/2^\circ$ E 14, see line D
- g = Lime stone self + W.O. S $3 1/2^\circ$ W 7 links = line C.
- h = Lime stone self = 3' x 20" x 11" (put in right)
- i = " " = 3' x 9" x 2 ft + R stake, at east edge of ditch
- j = small nig head = + W.O. 7" S $8 1/2^\circ$ W 46 + W.O. 28" N $5 1/2^\circ$ E 32 1/2 + W.O. 28" S $9 1/2^\circ$ E 29 ^{see line f to}
- k = nig head 12' x 8" self. W.O. 30" N $1 1/2^\circ$ E 45 + W.O. 10" N $3 1/4^\circ$ W 24 = Line A
- l = stone small nig. at fence + N $9 1/2^\circ$ W 23.24 poles from j
- x = spike in R.R. tied 18 links eastward on cent. R.R. from cent. old wooden bent end.
- y = old stone east margin ditch. Locust stump N $7 1/2^\circ$ E 57 lbs. see line G.
- z = old stone in surr line \angle to Hunter + Patterson
- e of marked line trees

INDEXED ON MAP

1854



M^r. Kinnon Surv.

Aug

Spike in R.R. tied
 Kears + Gibby
 160.3
 (75.48) N 80 E
 103.37 a.
 A.C. McClure
 Durr 9950
 1854
 Henry M. Kinnon
 76.74 acs
 INDEXED ON MAP
 John Hunter
 Durr 9929
 Durr 9949
 Durr 9990
 A.G. Patterson
 366 2/3 a.
 Surveyed as above for M^r. Clure + M^r. Kinnon
 March 10th 1881.