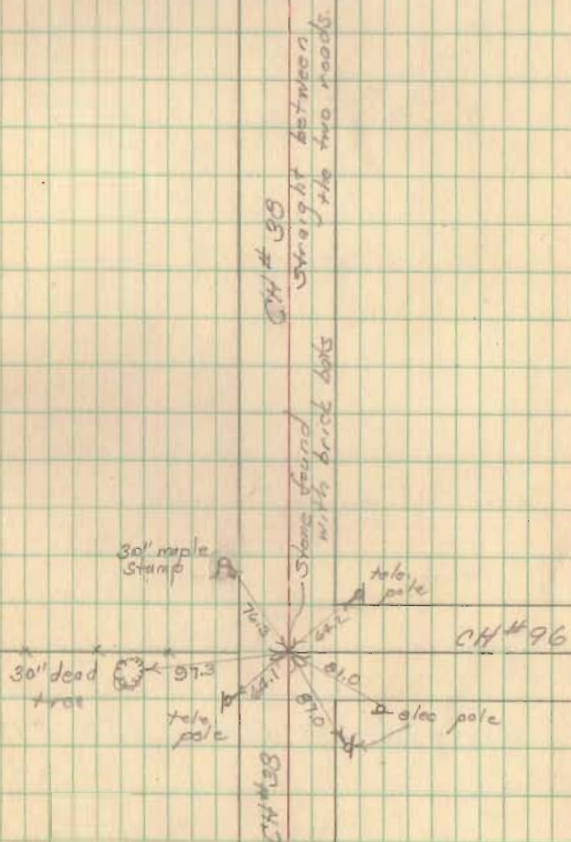
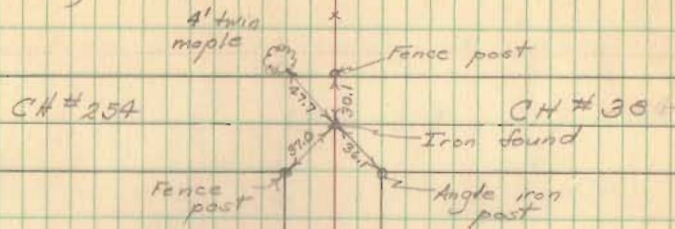


Witnesses to corners of
 CH#38 at CH#254 + CH#96.

Nov. 1, 1950
 D. Dodson
 V. Detrick
 N. Keyser



Roads 38 + 254.

Scott

3/21/39

6

41+00

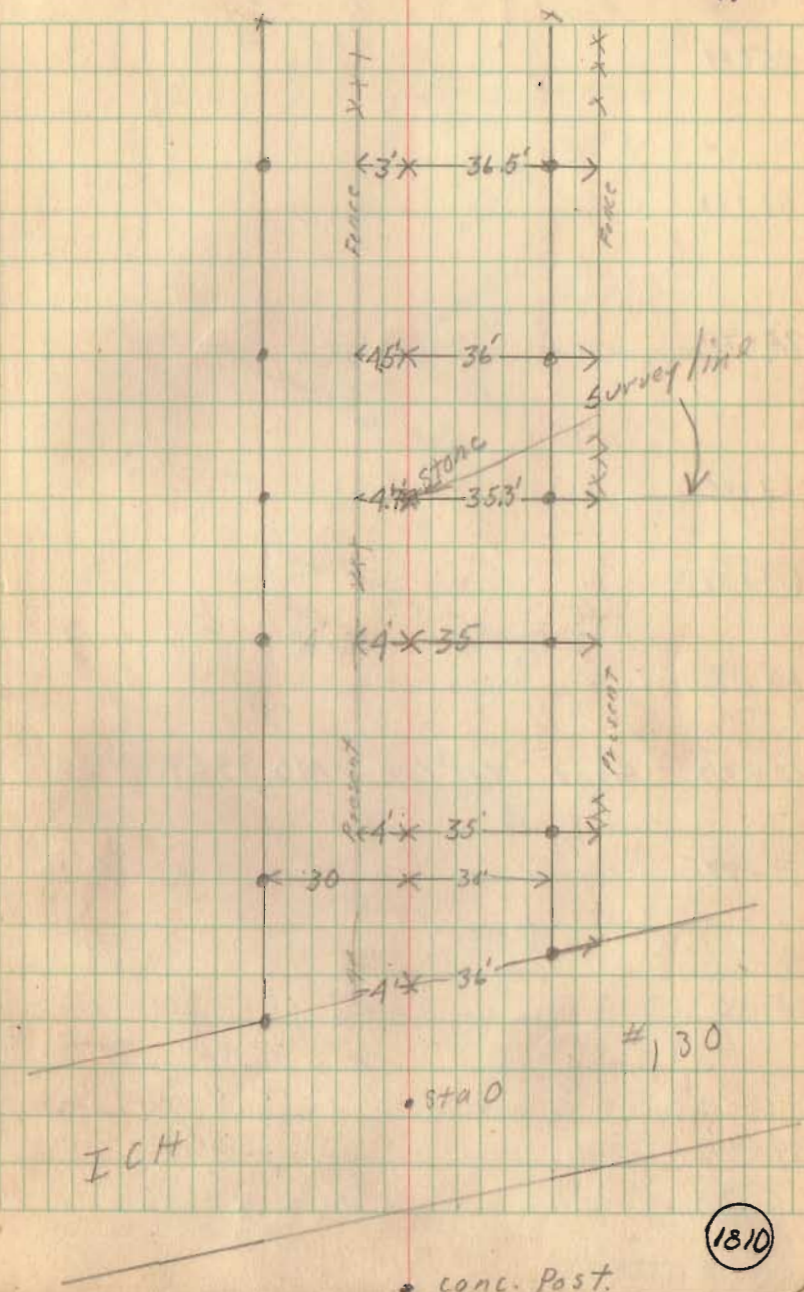
34+00

26+39

18+00

12+14

0 survey line + center ICH #130



1810

Roads 38 & 254

86+08

81+01

79+70

69+00

65+07

60+47

60+07 Stone NW Cor VMS 9969

59+835

59+56

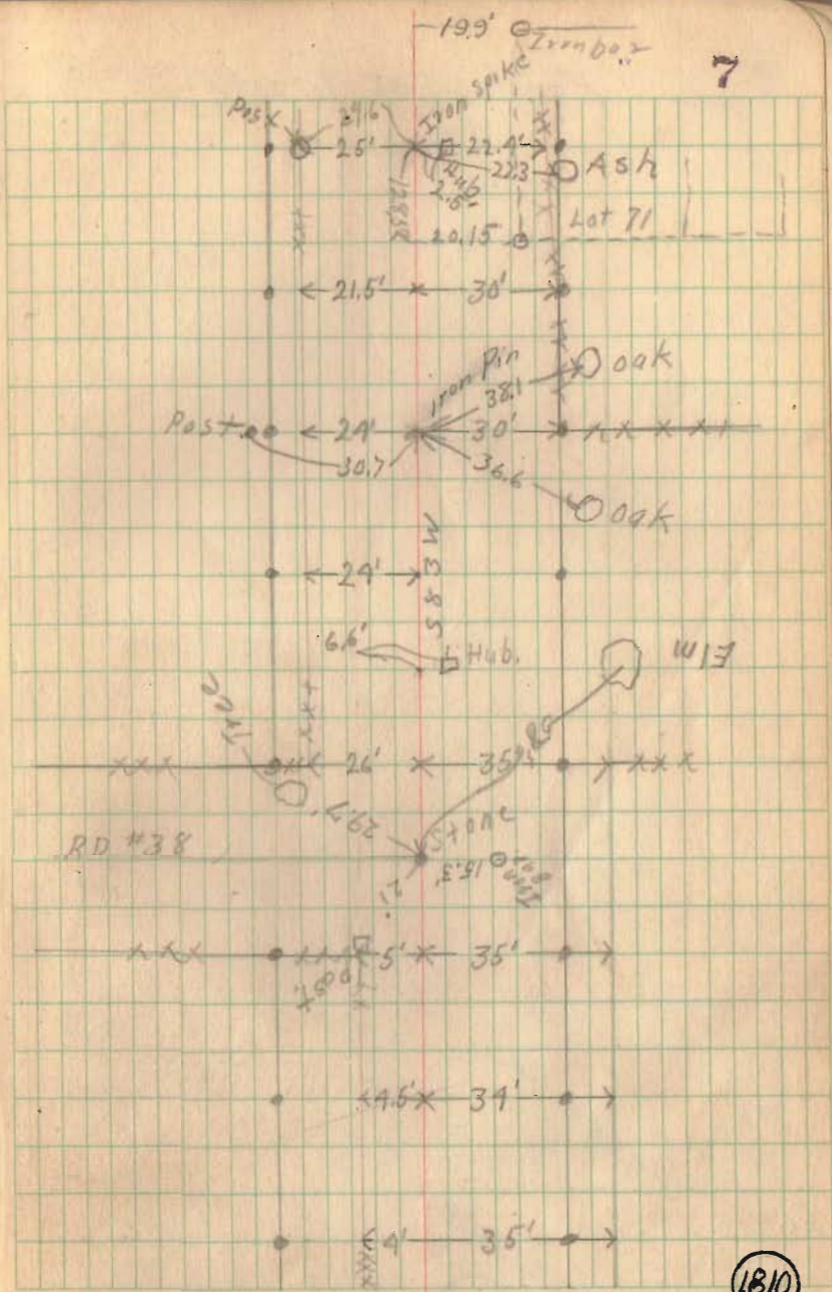
49+00

Mon 63+00

Mon 61+07P left only

Mon. 59+00

7



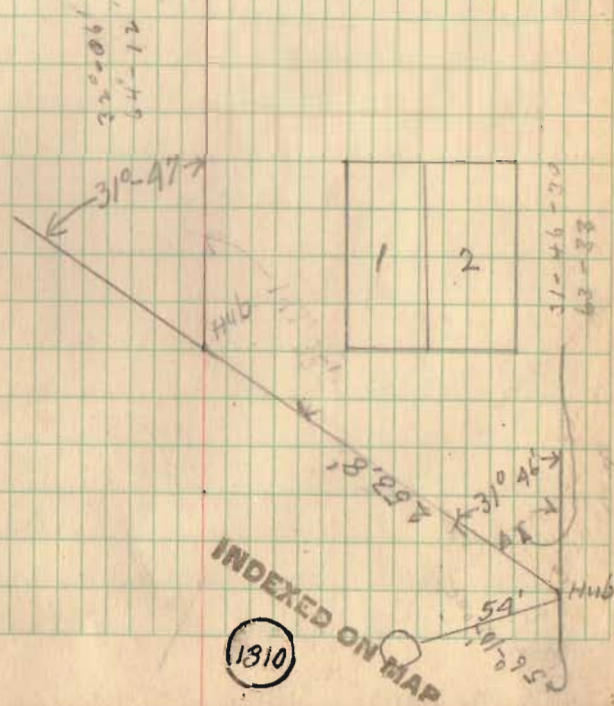
1810

INDEXED ON MAP

Roads 38 & 254

See pg. 26

86+08

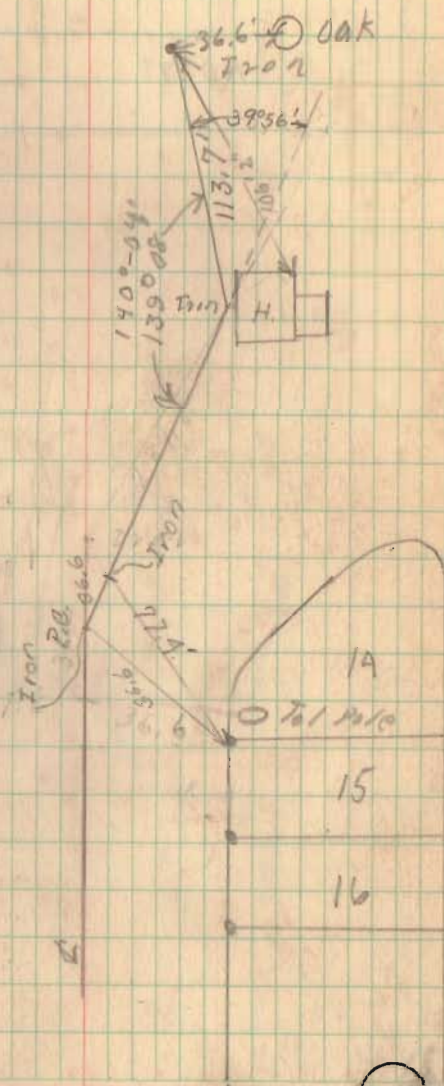


Roads

38 & 254

See pg. 40

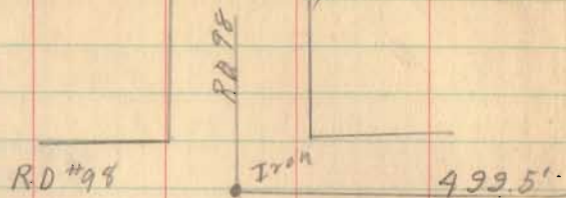
9



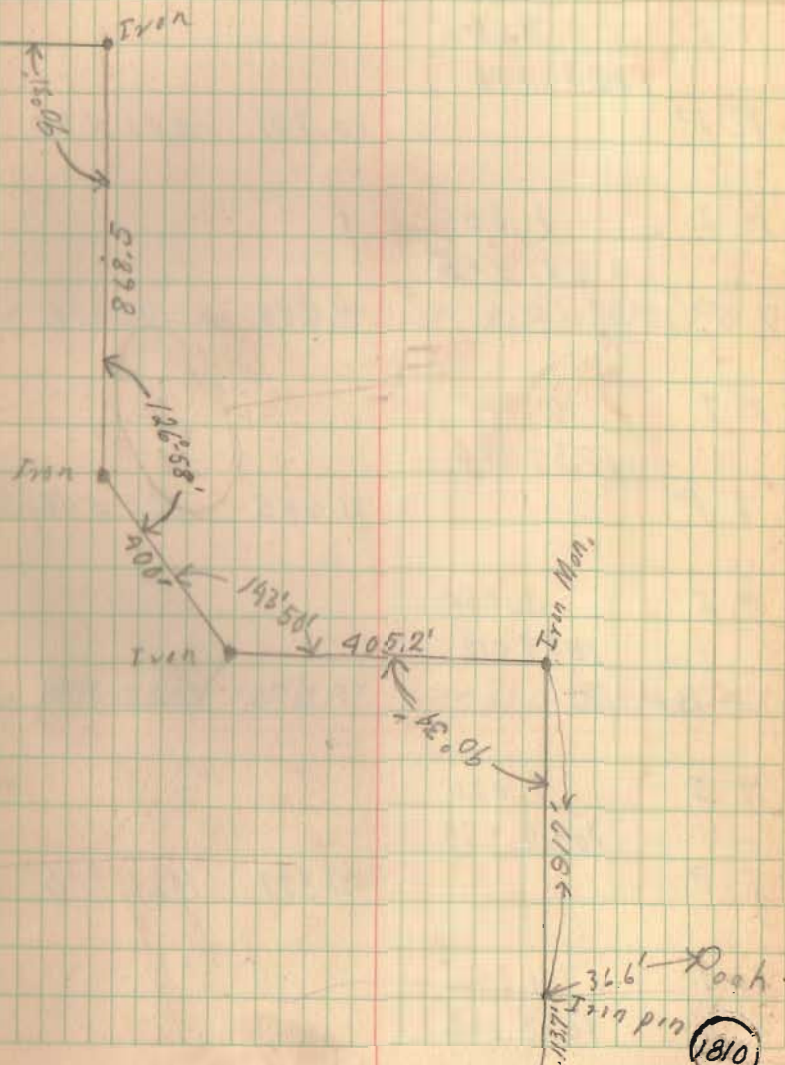
18.0

INDEXED ON MAP

01 Roads 38 & 254



10



INDEXED ON I