

FB 712

Intersection T.R. 95 w/ S.R. 366
 Richland Twp.
 Logan Co., Ohio
 505+99.66 - P.I. - Fd. R.R. Spk.
 0°-33'-57" Lt.

505+74.40 - P.I. - Set R.R. Spk. -
 Intersection & T.R. 95 w/ &
 S.R. 366 - No angle

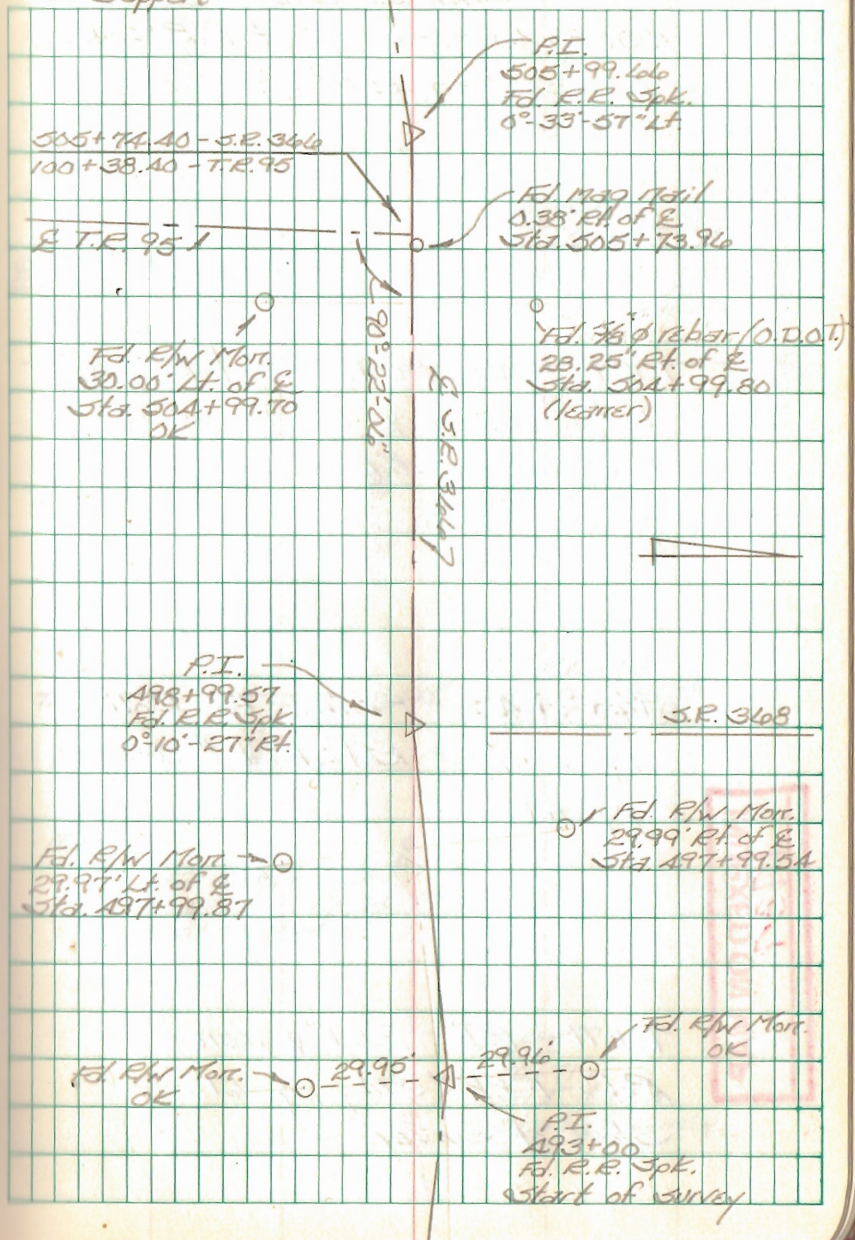
498+99.57 - P.I. - Fd. R.R. Spk.
 0°-10'-27" Rt.

493+00 - P.I. - Fd. R.R. Spk. -
 Ref: R/W plans W-1 - Start
 of this survey

C. Dill
 B. Simmons
 G. Dappert

Oct. 04

23



FB 712

Intersection T.R. 95 w/ S.R. 366
 Richland Twp.
 Logan Co., Ohio

100+38.40 - P.I. - Set R.R. Spk. -

Intersection of T.R. 95 w/ E

S.R. 366

100+08.40 - P.O.T. - Set R.R. Spk. -

Intersection of T.R. 95 w/ S.

R/W line of S.R. 366

96+94.45 - P.O.T. - Fd. Bolt

(top bent) - Ref: F.B.K. # 57A;

pg. 49.

71+71 - P.I. - Fd. 1" dia iron -

Ref: F.B.K. # 57A, pg. 67 -

Start of survey

C. Dill
 B. Simmons
 G. Dappert

Oct. 04

24

