

Cook survey
 Richland Twp.
 V.M.S 9972

- A - Corner Post Witness N. 85 1/4 W. TO
 oak (now stump) ^{540 1/2 lbs.} { 28.71' O.K.
- B. Apparent ϕ Pipe Placed 1" Iron
- C " " "
- D " " "

AB = 756.36 O.K with deed.
 BC = 825.15
 CD = 289.15
 DA = 814.15

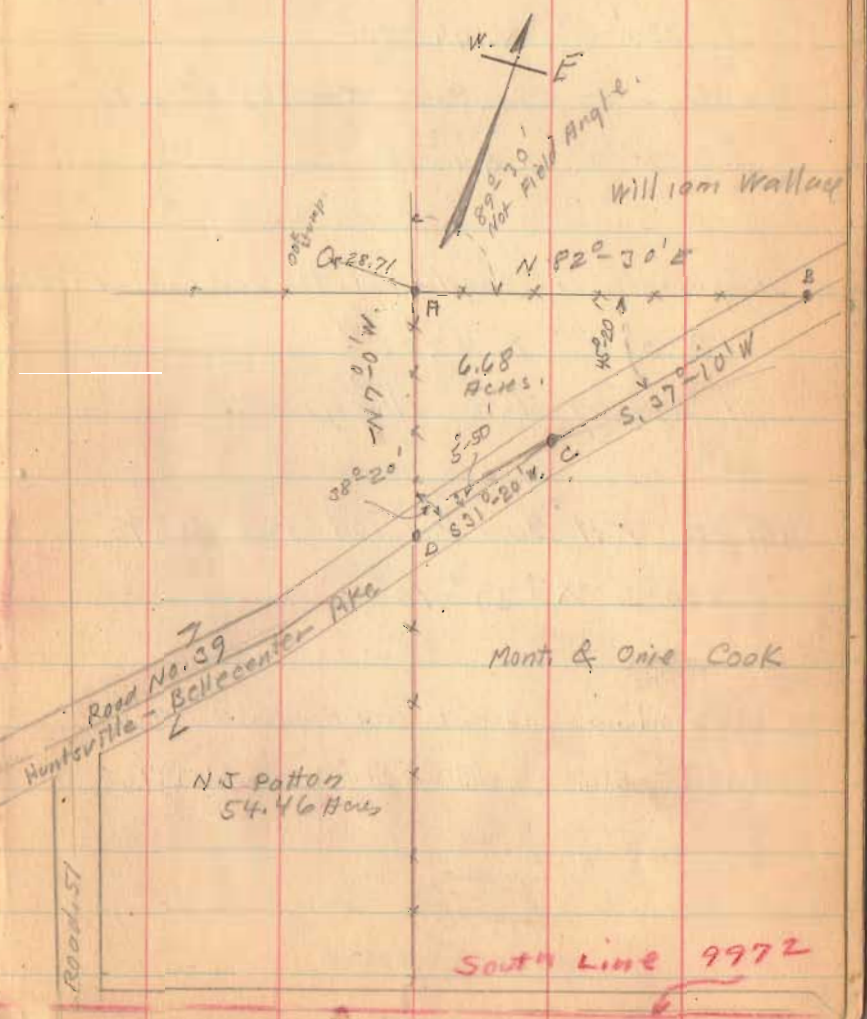
ABCD A = 6.86 Acres.

V.M.S. 9971
 Road 99
 V.M.S. 9972

J. Carl Patton
 62.96 Acres

Road No. 39
 Hunterville - Bellecenter Ave
 N.J. Patton
 54.46 Acres

Sept. - 19-1903 89
 Windy
 Threatening rain
 Wright
 Mr. Cook.



South Line 9972