

TORRENCE ST. EXTENTION  
 BELLE CENTER OHIO  
 1930

FIELD NOTES IN LOGAN COUNTY  
 SURVEYORS BOOK 501 PAGE 71  
 SCALE 1" = 20'  
 SURVEYED OCT. 30, 1930  
 J.F. Wright, C.E.

CENTER ST. 60'

0+00 INK SIDE OF CENTER ST.

TORRENCE ST. 60'

N. 51° W.

SIDEWALK

30' 30'

2+00  
 FILL 1'-4"

2+46 END OF PRESENT ST.  
 5.37 W.

2+50  
 FILL 0'-8"

E.E. OBERMOUR  
 3+00  
 FILL 1'-1"

3+00  
 FILL 1'-6"

3+50  
 FILL 1'-8"

3+50  
 FILL 2'-5"

Wm. BOYD RAMSEY

4+00  
 FILL 2'-3"

4+00  
 FILL 1'-5"

4+50  
 FILL 2'-3"

4+50  
 FILL 1'-4"

WALTER MAINS

N. 51° - 42' W.

80'

INLET

INLET

ELIZABETH ST. 60'

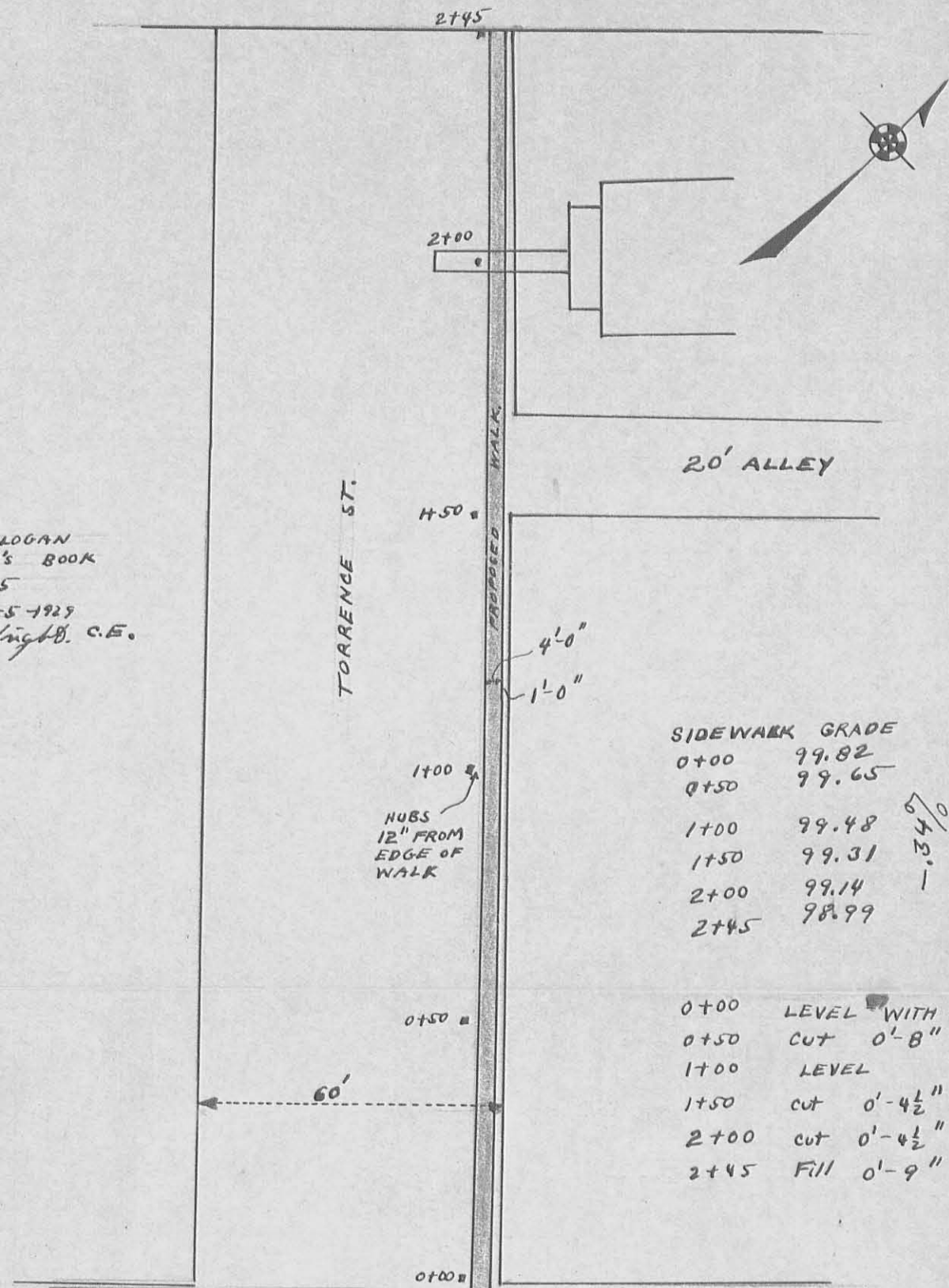
SIDEWALK

20" TIE MARK DITCH

INDEXED ON MAP  
 1426 IP

Fills given from HUB  
 To High edge of sidewalk  
 BOOK 501 Page 76

SURVEY NOTES LOGAN  
 COUNTY SURVEYOR'S BOOK  
 NO. 501 PAGE 45  
 SURVEYED JUNE-5-1929  
 F. F. Wright, C.E.



SIDEWALK GRADE

0+00	99.82
0+50	99.65
1+00	99.48
1+50	99.31
2+00	99.14
2+45	98.99

1.340

0+00	LEVEL WITH HUB
0+50	CUT 0'-8"
1+00	LEVEL
1+50	CUT 0'-4 1/2"
2+00	CUT 0'-4 1/2"
2+45	FILL 0'-9"

CENTER ST.

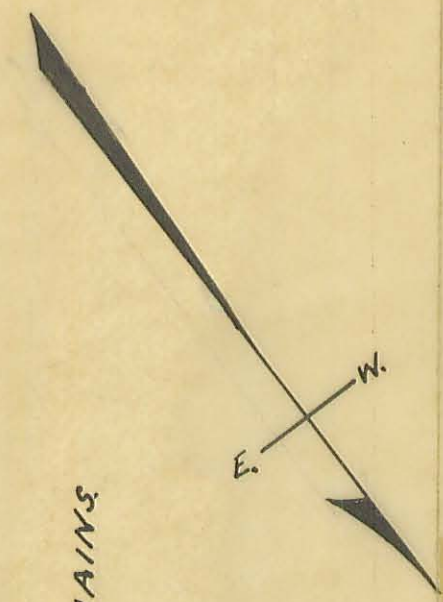
B.M. ON WALK  
 ELEV. 100.00

SIDEWALK GRADE  
 TORRENCE STREET  
 BELLECENTER OHIO  
 1929

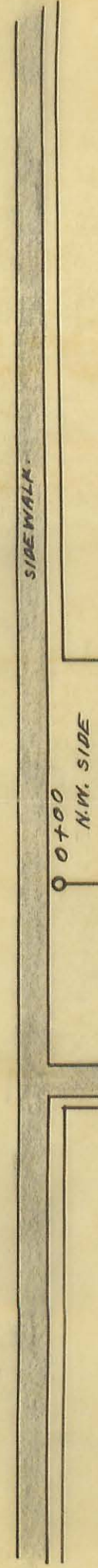
INDEXED ON MAP  
 1426 2P

**TORRENCE ST. EXTENTION  
BELLE CENTER OHIO  
1930**

FIELD NOTES IN LOGAN COUNTY  
SURVEYOR'S BOOK 501 PAGE 71  
SCALE 1" = 20'  
SURVEYED OCT. 30, 1930  
J.F. Wright, C.E.



CENTER ST. 60'



0+00 N.W. SIDE OF CENTER ST.

TORRENCE ST. 60'

N. 51° W.

0+100

0+200

0+300

3+22

3+65

4+00

2+46 END OF PRESENT ST.

WALTER MAINS

INLET

INLET

ELIZABETH ST. 60'

60'

20" TILE MACK DITCH

SIDEWALK

SIDEWALK

SIDEWALK

E.E. OBERNOUR

Wm. BOYD RAMSEY

N. 51° 42' W.

80'

INDEXED ON MAP  
1426 3P

Deeds-1930

Torrence St. Extension

Bellecenter, Ohio.

Walter Mains.

The following described land in V.M.S. 9989 Richland Township, Logan County, Ohio.

Beginning at a point in East edge of Elizabeth St. and the South side of Torrence St. (extended) thence, S.51° 0' E. 127.5 feet, thence N.39° 0' E. 53.5 feet, thence N.51° 42' W. 127.5 feet to the E. side of Elizabeth St., thence S.39° 0' W. 52.0 feet to place of beginning said tract containing .15 of one acre more or less and being same tract as surveyed Oct. 1930 as shown and recorded in Logan County Surveyor's Book 501, Page 71.

INDEXED ON MAP

1426 4D-1

Torrence St. Extension.

Bellecenter, Ohio.

E.E. Obenour

The following described land in V.M.S. 9989 Richland Township, Logan County, Ohio:-

Beginning at the North edge of Torrence St. in the Village of Bellecenter at a point 246 feet West of W. edge of Center St., thence N.51° 0' W. 76 feet, thence N.39° 0' W. 60 feet to the South side of Torrence St. (extended), thence S.51° 0' E. 76 feet, thence N.39° 0' W. 60 feet to place of beginning, said tract containing .10 of one acre more or less and being same survey as made Oct. 1930 as shown in Logan County Surveyor's Book 501, Page 71.

INDEXED ON MAP

(1426) 4D-2

Torrence St. Extension.

Bellecenter, Ohio.

Wm. B. Ramsey.

The following described land in V.M.S. 9989 Richland Township, Logan County, Ohio.

Beginning at the East edge of Elizabeth St. and the North edge of Torrence St. (extended) thence S.39° 0' W. with East edge of Elizabeth St. 8.0 feet thence S.51° 42' E. 127.5 feet, thence S.39° 0' W. 53.5 feet to the S. side of Torrence St. (extended) thence S.51° 0' E. with the South side of Torrence St. (extended) 43 feet, thence N.39° 0' E. 60 feet, thence N.51° 0' W. 170.5 feet to place of beginning, said tract containing .08 of one acre more or less and being same survey sa made in Oct. 1930, as shown in Logan County Surveyor's Book 501, Page 71.

INDEXED ON MAP

1426 4D-3