

Road 107 (Fairview Pike)  
Richland Tap.

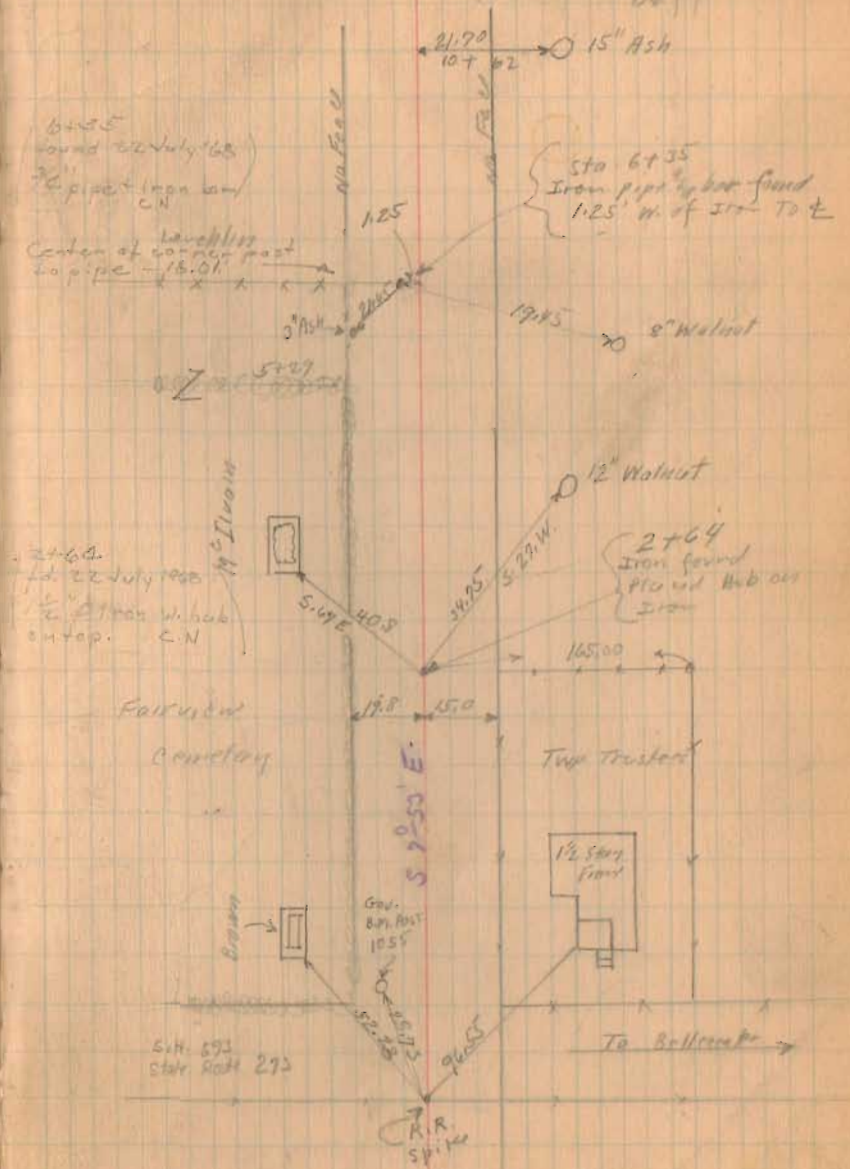
40' Road.

See book 307

Staked from N. To S in order  
to follow old Stationing.  
Commissioner's journal N. Page 190 June 1911

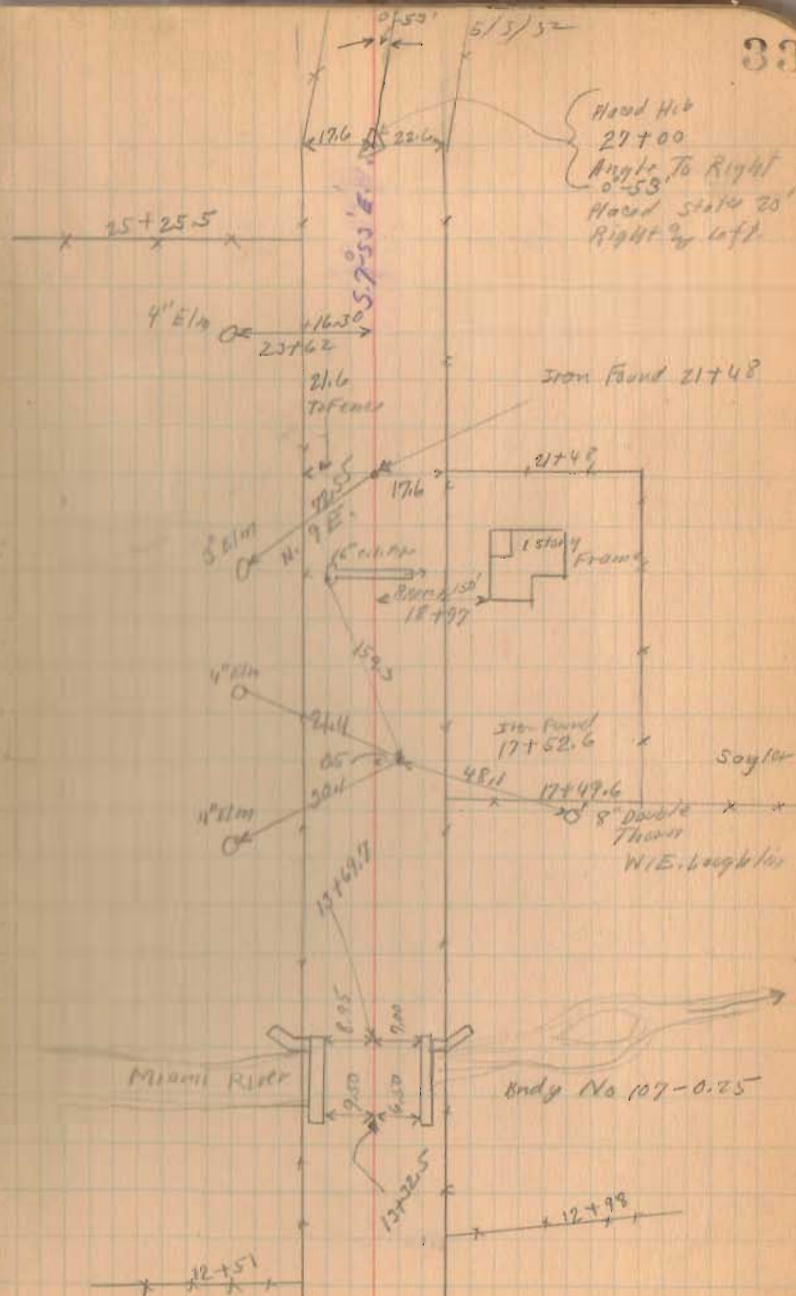
1873  
INDEXED ON MAP

Mar 3-1912  
Clear Cut  
Wright  
M<sup>c</sup>Ilwain  
D. S. I.



Road 107

(873)  
INDEXED ON MAP





Road 107

(1073)  
INDEXED ON MAP

5/3/52

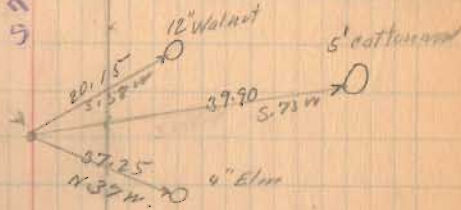
35

71+18.5  
Found Iron  
12' 01' left

M<sup>c</sup> Kirahan  
74+20.5

Keys

59° 20' E



Bridge No. 107-1.40

15' Hickory  
25.65  
62+15

4' Oak 61+9.5

56° 21' E

4' Oak 58+34

R.R. Spikes  
Top of 754  
Sleep  
21.9  
57+12

Road 107

(1073)  
INDEXED ON MAP

