

Road 106
Richland Twp

40' See Road Record No. 1 Page 160

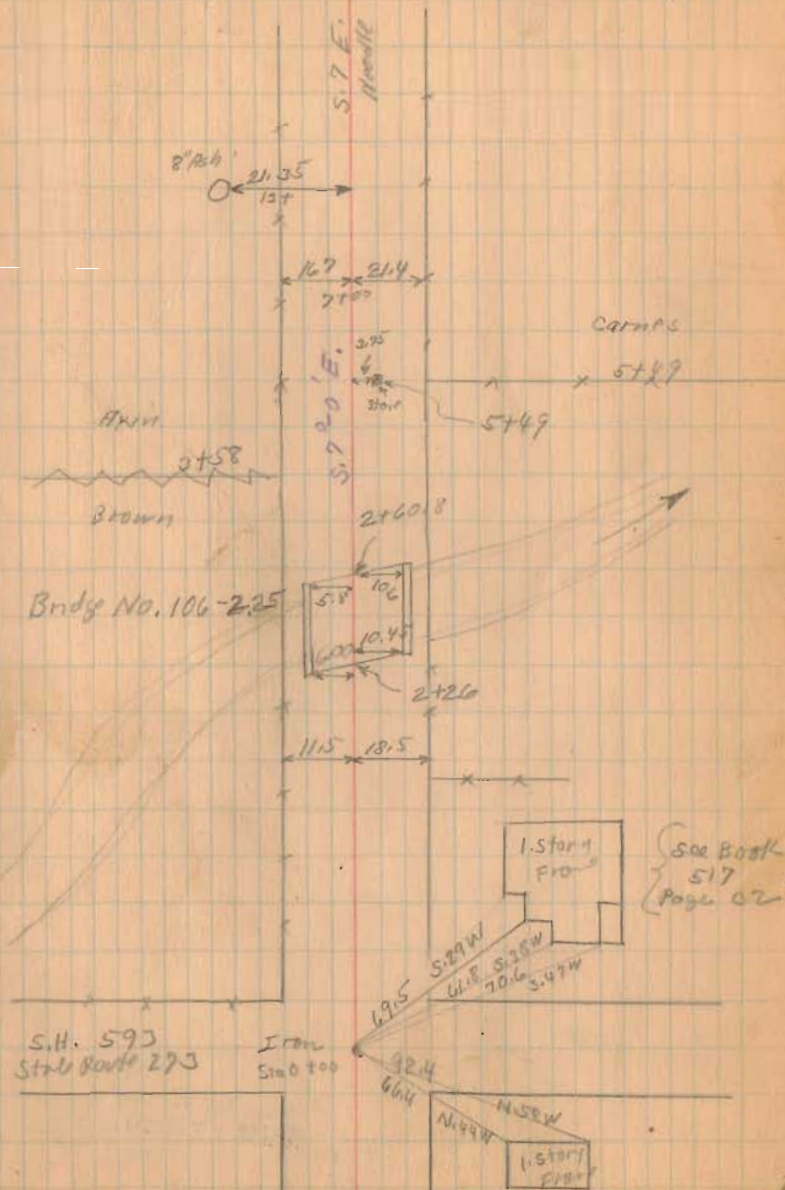
Stakes placed 20' from E for 40'
road sta. area To 16+88.66
From sta. 16+88.66 To 51+59 No stakes placed

From sta. 243+38
R/W Plan L-13
S.H. 570

(1872)
INDEXED ON MAP

May 2-1932
John Cook
Wing Lt
M. R. ...
Duff

29



Road 106

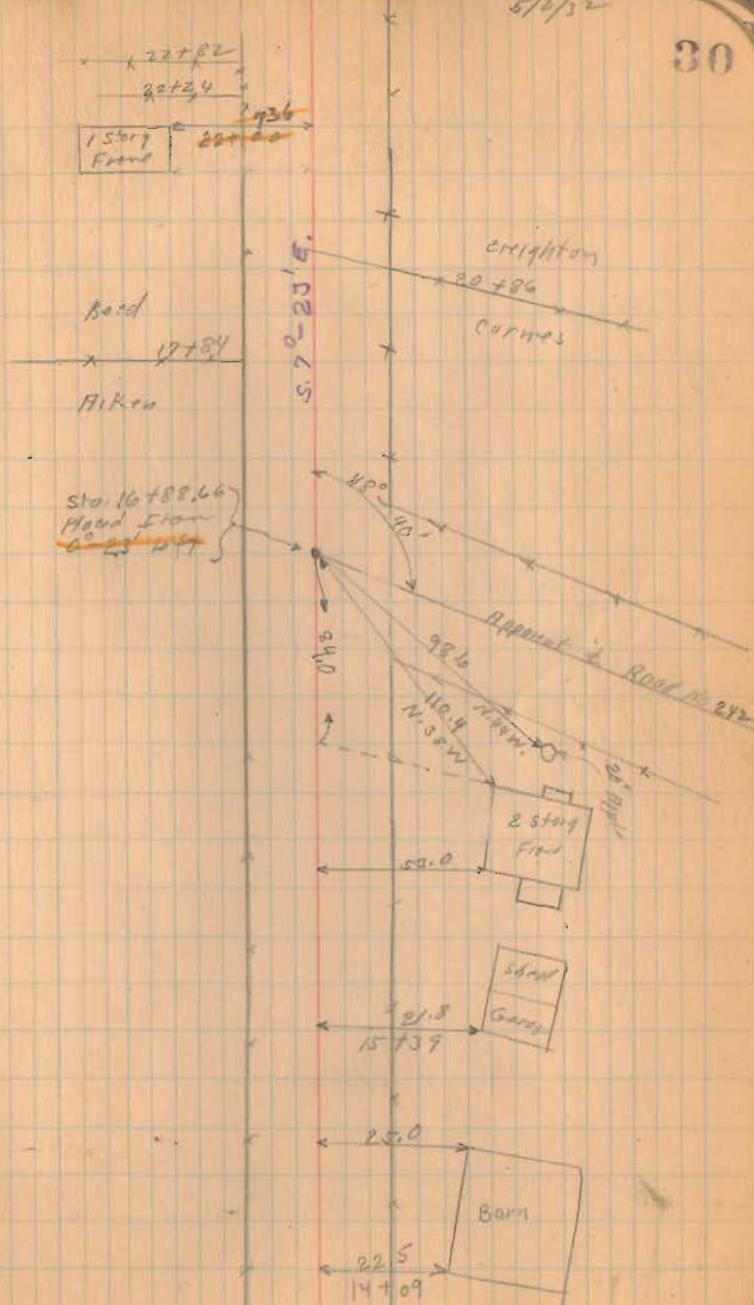
See Book
596
Pages 65-67

1372

INDEXED ON MAP

5/2/32

30



Road 106

see Books 596
Pages 65 to 67

(172)
INDEXED ON MAP

{ See Kirk Survey
Book 390 Page 5 }

4/2/32

31

