

Resurvey Part of C.R. 254  
Sta. 0+00 to Sta. 5+17.05  
Richland Twp., Logan Co., Ohio

FB 711

Δ+99.91 - P.I. - Hub Fd. - replaced w/ 5/8"  
dia. capped re-bar. (1994)  
0°-52'-27" Rt.  
No Curve  
(Shown as Sta. 5+00 in F.Bk. 560,  
pg. 37; F.Bk. 642, pg. 25; plat X-254)

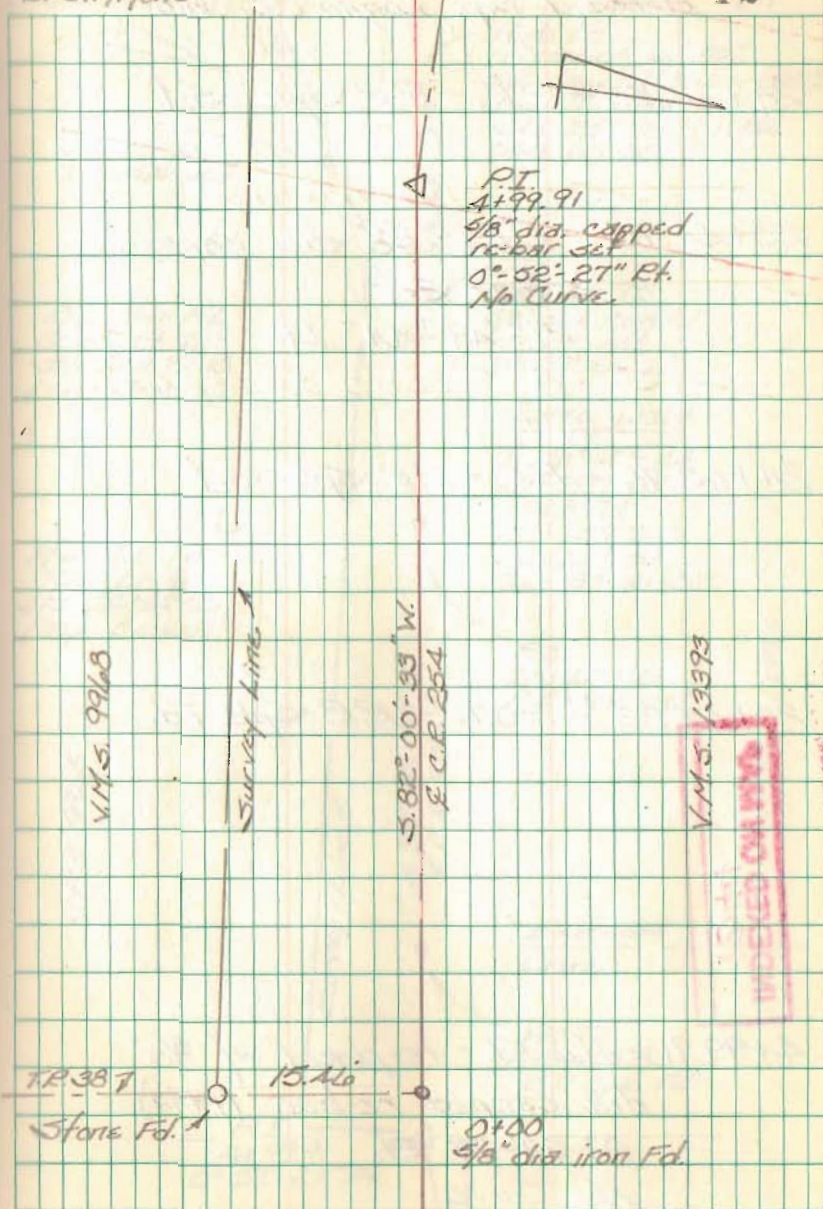
INDEXED ON MAP  
7/10/01  
1/24/01

0+00 - 5/8" dia iron Fd. - Intersection  
of C.R. 254 w/ of T.R. 38

C. Nichols  
C. Dill  
B. Simmons

May 99

12



Resurvey Part of C.R. 25A  
Sta. 0+00 to Sta. 51+17.05  
Richland Twp., Logan Co., Ohio

FB 711

24+22.50 - P.T. - R.R. Spk. Set

25+44.75 - P.I. - 5/8" dia. capped  
re-bar set  
31° 49' 44" Lt.

24+42.76 - P.C. - R.R. Spk. Set

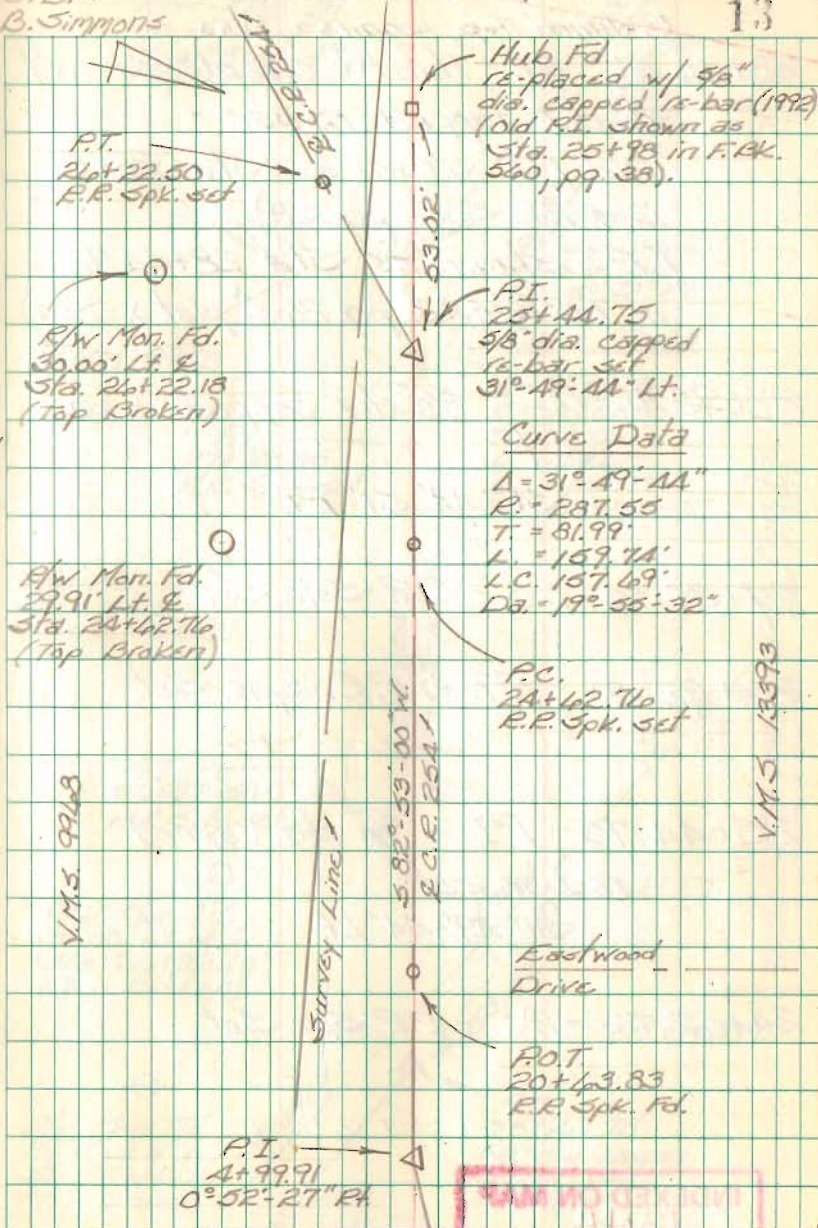
20+43.83 - P.O.T. - R.R. Spk. Fd.

4+99.91 - Hub Fd. - re-placed w/ 5/8"  
dia capped re-bar. (1994)  
0° 52' 27" Rt.  
No Curve

C. Nichols  
C. Dill  
B. Simmons

May 99

13



INDEXED ON MAP  
1344

INDEXED ON MAP

FB 711

Resurvey Part of C.R. 25A  
Sta. 0+00 to Sta. 5+47.05  
Richland Twp., Logan Co., Ohio

28+44.67 - P.T. - Hub Fd. - replaced w/  
5/8" dia capped re-bar -  
(Old P.I. shown as Sta. 28+51  
in F.B.K. 560, pg. 38)  
(P.T. shown as Sta. 28+44.92  
in F.B.K. 642, pg. 26 & plat X-25A)

27+93.41 - P.I. - 5/8" dia capped re-bar  
set  
31°-49'-51" Pt.

27+39.35 - P.C. - R.R. Spk. Set

26+22.50 - P.T. - R.R. Spk. Set

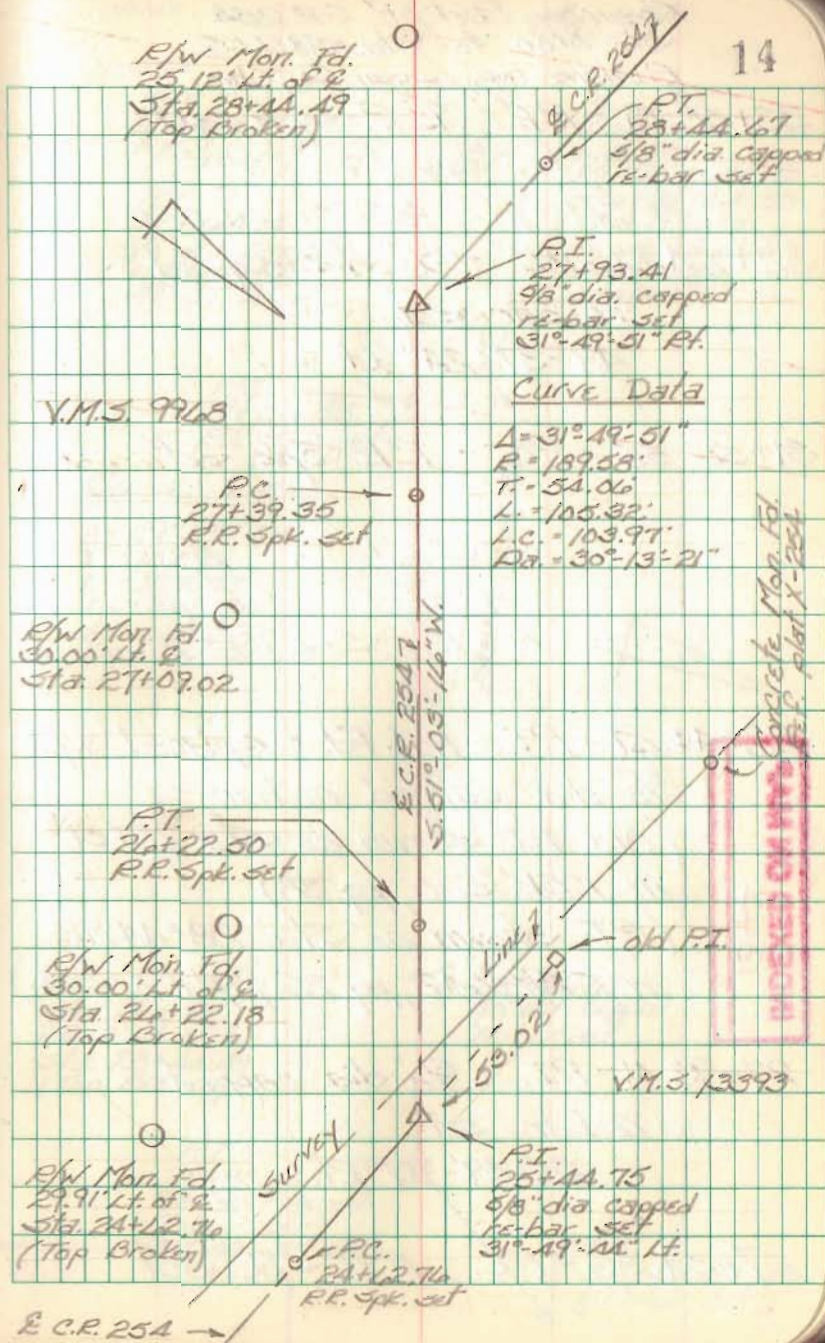
25+44.75 - P.I. - 5/8" dia capped  
re-bar set  
31°-49'-44" Lt.

24+62.76 - P.C. - R.R. Spk. Set

INDEXED ON MAP

344

14



FB 711

Resurvey Part of C.P. 25A  
Sta. 0+00 to Sta. 51+17.05  
Richland Twp., Logan Co., Ohio

33+58.81 - P.T. - R.R. Spk. set

32+64.51 - P.I. -  $\frac{5}{8}$ " dia. capped  
re-bar set  
 $49^{\circ}37'24"$  Lt.

31+56.55 - P.C. - R.R. Spk. set

28+44.67 - P.T. - Hub Fd. - replaced w/  
 $\frac{5}{8}$ " dia. capped re-bar -  
(Old P.I. shown as Sta. 28+51  
in F.B.K. 560, pg. 38)  
(P.T. shown as Sta. 28+44.92  
in F.B.K. 442, pg. 26 & plat X-25A)

27+93.41 - P.I. -  $\frac{5}{8}$ " dia. capped  
re-bar set  
 $31^{\circ}49'51"$  Rt.

27+39.35 - P.C. - R.R. Spk. set

C. Nichols  
C. Dill  
B. Simmons

May 99

15

P.T.  
33+58.81  
R.R. Spk. set

P.I.  
32+64.51  
 $\frac{5}{8}$ " dia. capped  
re-bar set  
 $49^{\circ}37'24"$  Lt.

P.C.  
31+56.55  
R.R. Spk. set

Curve Data

$\Delta = 49^{\circ}37'24"$   
 $T = 107.94'$   
 $R = 233.53'$   
 $L = 202.26'$   
 $L.C. = 196.00'$   
 $D_a = 24^{\circ}32'05"$

R/W Mon. Fd.  
25.12' Lt. of R  
Sta. 28+44.49  
(Top Broken)

P.I.  
27+93.41  
 $\frac{5}{8}$ " dia. capped  
re-bar set  
 $31^{\circ}49'51"$  Rt.

Old P.I.  
1" sq. Inced  
bolt Fd.  
29.94' Pl. of E  
Sta. 32+64.30  
(This P.I. is  
shown on plat  
X-25A - 110  
station)

R.C.P. 25A  
S. 82° 03' 07" W.

1989 R.C.P. 25A

P.T.  
28+44.67  
 $\frac{5}{8}$ " dia. capped  
re-bar set

P.C.  
27+39.35  
R.R. Spk. set

FB 711

Resurvey Part of C.R. 254  
Sta. 0+00 to Sta. 51+17.05  
Richland Twp., Logan Co., Ohio

41+12.87 - P.I. -  $\frac{5}{8}$ " dia capped re-bar set.  
(We found a concrete monument here in 1992 - 170  
luck this time)  
39°-54'-05" Lt.  
Ref. Plan X-254

37+00.97 - P.I. - R.R. Spk. Set  
90°-39'-06" Lt.  
No Curve

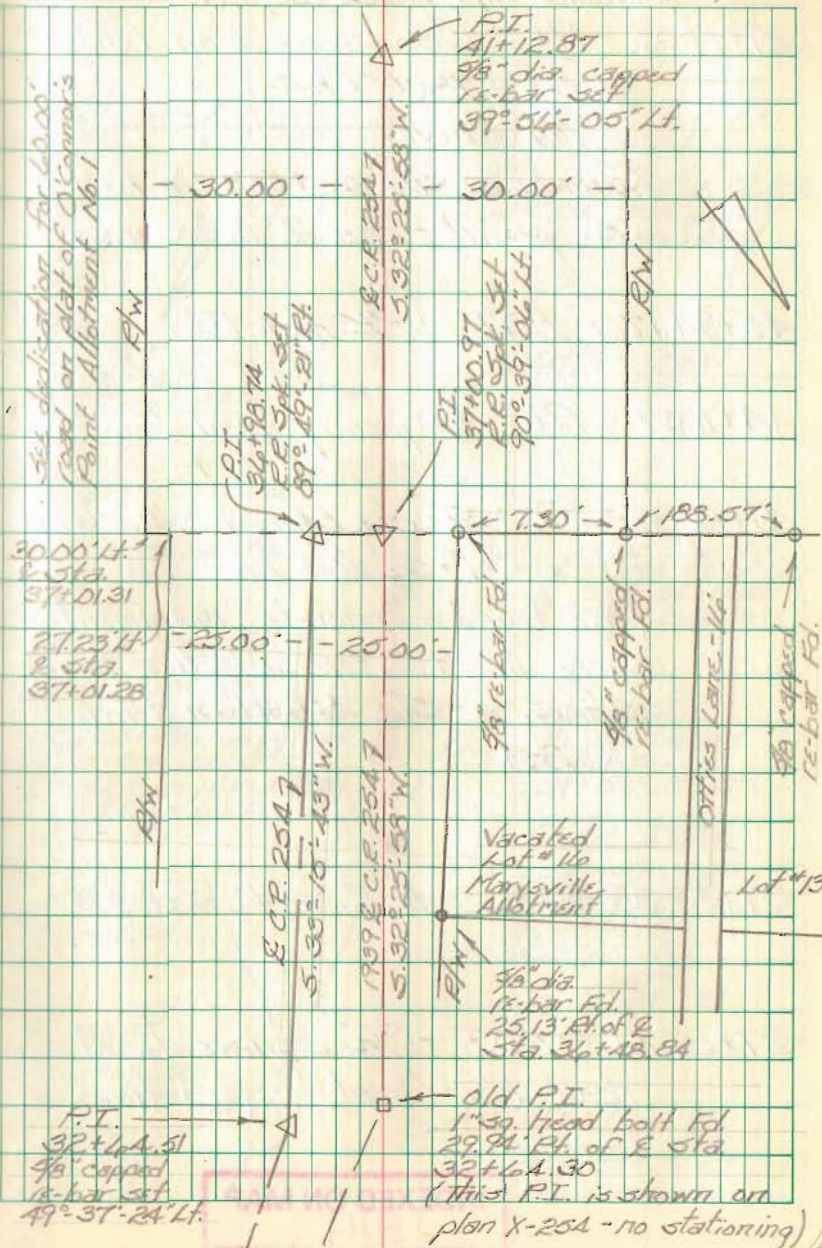
36+98.74 - P.I. - R.R. Spk. Set  
89°-49'-21" Rt.  
No Curve

32+64.51 - P.I. -  $\frac{5}{8}$ " dia. capped  
re-bar set.  
49°-37'-24" Lt.

INDEXED ON MAP  
1344

C. Nichols  
C. Dill  
B. Simmons

May 99



FB 711

Resurvey Part of C.R. 25A  
Sta. 0+00 to Sta. 51+17.05  
Richland Twp., Logan Co., Ohio

51+17.05 - P.I. - 1 7/8" square iron Fd. -

89° 27' 00" Lt.

No Curve

(Shown as Sta 52+58 1/2 in FBK  
500, pg. 11) - End of this survey

45+94.17 - P.O.T. - PK nail Fd.

44+11.37 - P.T. - 40 penny nail Fd.

41+12.87 - P.I. - 5/8" dia. capped re-bar set -  
39° 56' 05" Lt.

(We found a concrete monument  
here in 1992 - no luck this time)

Shown as Sta. 41+31.1 on Plat  
X-264

37+87.85 - P.C. - R.R. Spk. Set

37+87.41 - P.O.T. - 3/4" square head  
bolt Fd. (bent) - good line.

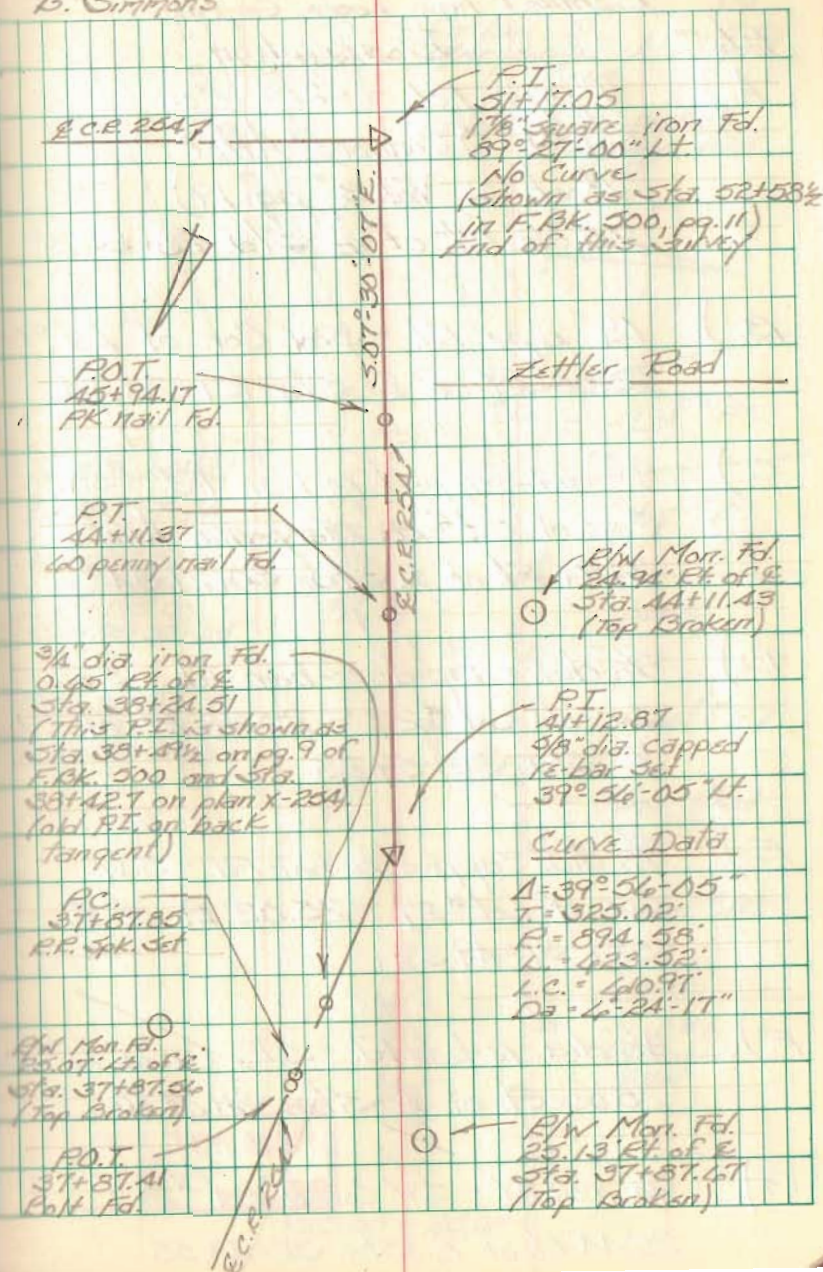
INDEXED ON MAP

1344

C. Nichols  
C. Dill  
B. Simmons

May 99

17



FB 711

Resurvey Part of C.R. 25A  
Sta. 0+00 to Sta. 51+17.05  
Richland Twp., Logan Co., Ohio

- | Pt. | Description  |
|-----|--|
| A.) | 1" pipe Fd. - S.E. Cor.<br>Lot #1, O'Connor's Allot<br>(Book C, Vol. 3, pg. 19)<br>25.02' Rt. of E Sta. 28+53.24 |
| B.) | 1 1/4" pipe Fd. - S.W. Cor. of Lot #1 -<br>25.00' Rt. of E Sta. 29+23.54   |
| C.) | 5/8" dia. capped re-bar Fd. - S.W.<br>Cor. of Lot #28 Marysville Allot.<br>24.99' Rt. of E Sta. 30+29.34         |
| D.) | 5/8" dia. capped re-bar Fd. - S.E.<br>Cor. of Lot #27 - 25.48' Rt. of<br>E Sta. 30+59.85                         |
| E.) | 5/8" dia. capped re-bar Fd. - S.W.<br>Cor. of Lot #27 - 25.02' Rt. of E<br>Sta. 31+49.33                         |
| F.) | 5/8" dia. re-bar Fd. - S.E. Cor. of Lot #25<br>25.06' Rt. of E Sta. 31+67.40                                     |
| G.) | 3/4" iron Fd. - S.W. Cor. of Lot #24 -<br>25.11' Rt. of E Sta. 32+48.58  |

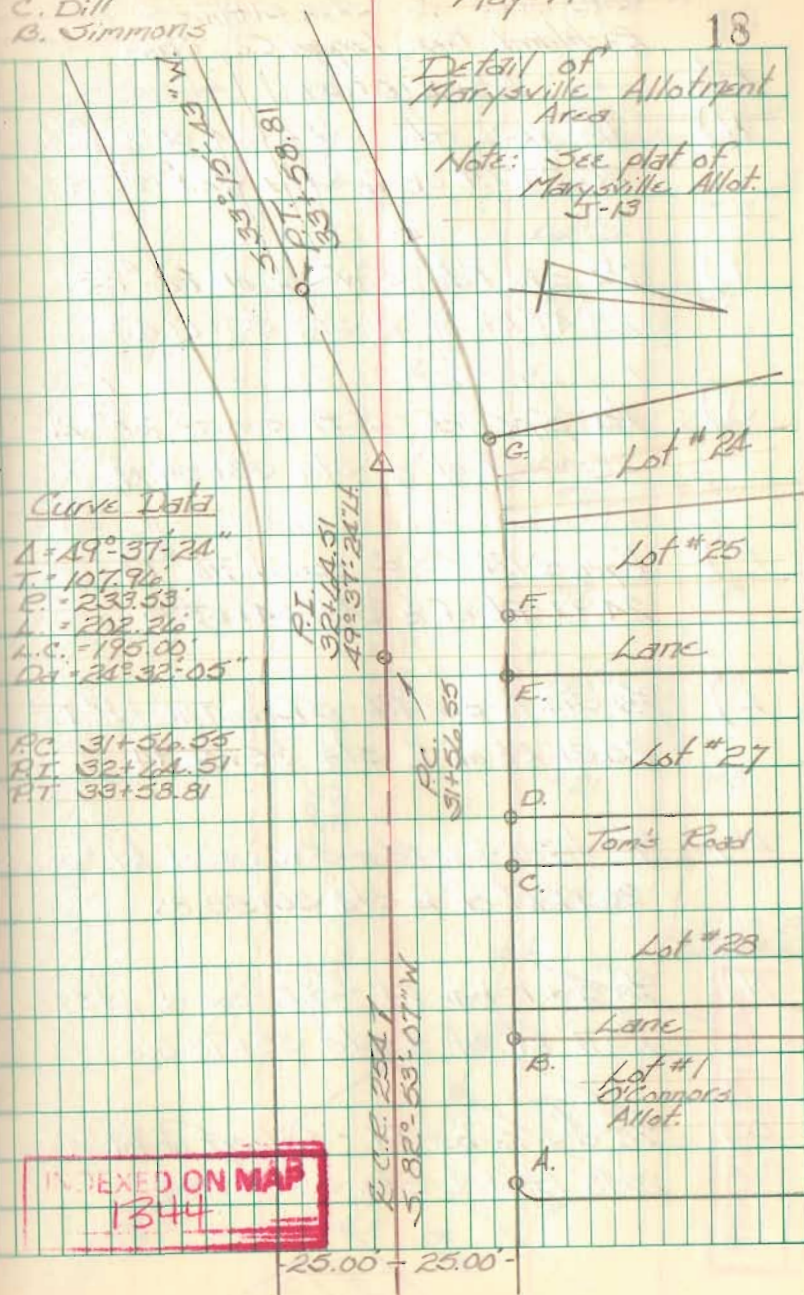
C. Nichols  
C. Dill  
B. Simmons

May 99

18

Detail of  
Marysville Allotment  
Area

Note: See plat of  
Marysville Allot.  
5-13



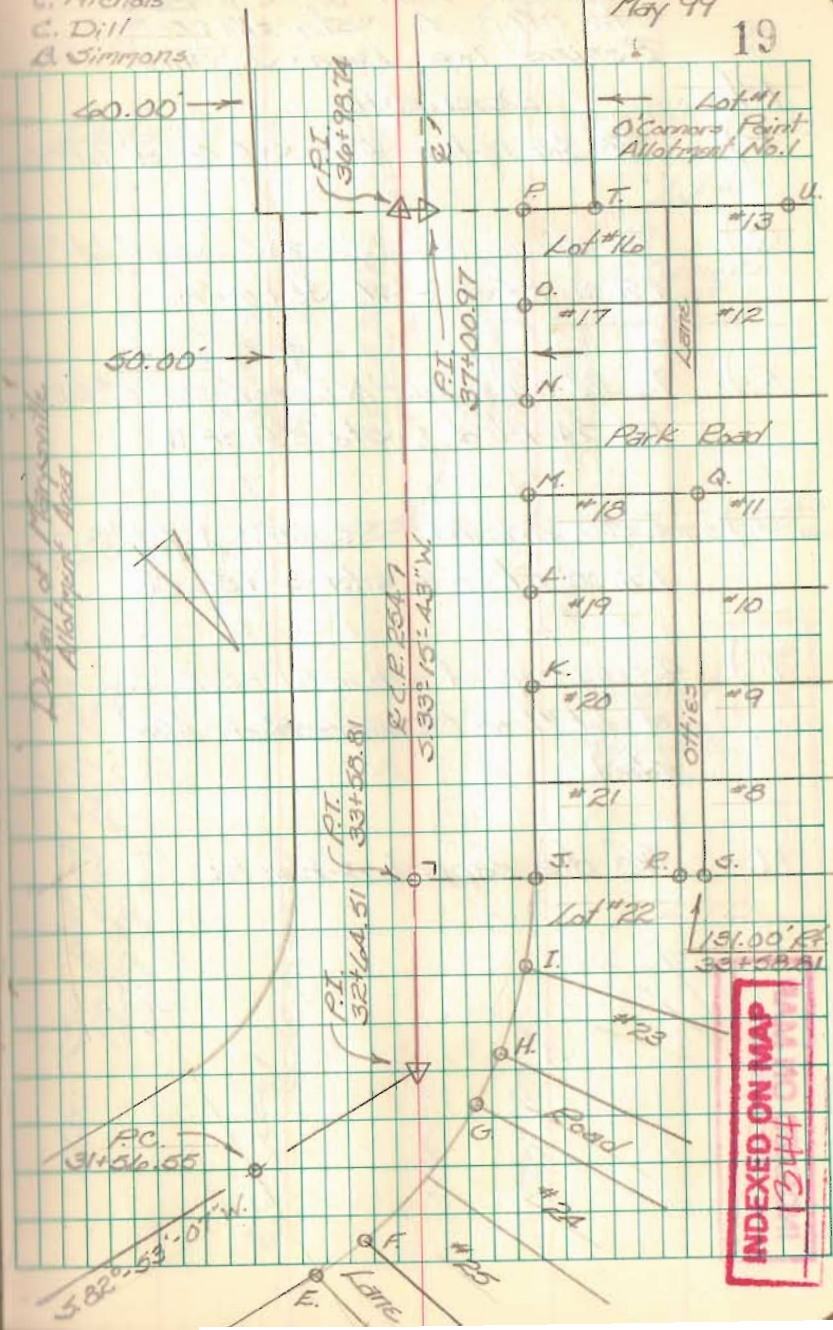
FB 711

Resurvey Part of C.P. 25A  
Sta. 0+00 to Sta. 51+17.05  
Richland Twp., Logan Co., Ohio

- | Pt. | Description  |
|-----|--|
| H.) | 1 1/2" pipe Fd. - S.E. Cor. of Lot #23 -<br>25.24' Pt. of E Sta. 32+75.69      |
| I.) | 1 1/2" pipe Fd. - S.W. cor. of lot #23 -<br>23.47' Pt. of E Sta. 33+17.43      |
| J.) | 1 1/2" pipe Fd. - S.E. cor. of lot #21 -<br>25.00' Pt. of E Sta. 33+59.22      |
| K.) | 1" pipe Fd. - S.E. cor. of lot #19 -<br>24.97' Pt. of E Sta. 34+58.95          |
| L.) | 5/8" dia. re-bar Fd. - S.E. cor. of lot #18 -<br>25.31' Pt. of E Sta. 35+08.94 |
| M.) | 5/8" dia. re-bar Fd. - S.W. cor. of lot #18 -<br>25.19' Pt. of E Sta. 35+58.88 |
| N.) | 5/8" dia. re-bar Fd. - S.E. cor. of lot #17 -<br>25.11' Pt. of E Sta. 35+98.86 |
| O.) | 5/8" dia. re-bar Fd. - S.W. cor. of lot #17 -<br>25.13' Pt. of E Sta. 36+48.84 |

G. Nichols  
C. Dill  
A. Simmons

May 99  
19





FB 711

Resurvey Part of C.R. 25A  
Sta. 0+00 to Sta. 5+17.05  
Richland Twp., Logan Co., Ohio

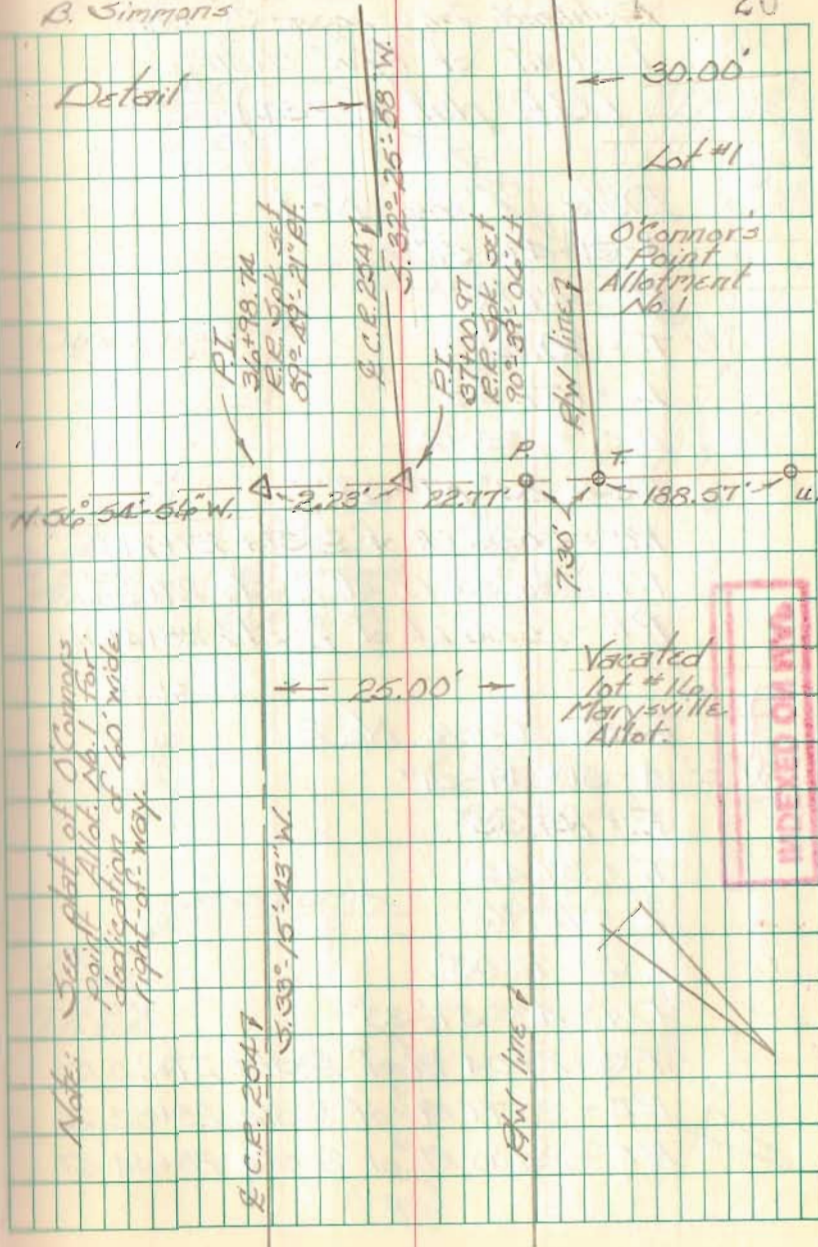
- | Pt. | Description   |
|-----|---|
| P.) | 5/8" dia. re-bar fd. - S.W. Cor. of lot #10   |
| Q.) | 5/8" square iron fd. - S.W. cor. of lot #11<br>131.00' Pt. of E Sta. 35+58.85           |
| R.) | 5/8" dia. re-bar fd. - N.E. cor. of lot #21 -<br>114.54' Pt. of E Sta. 33+58.91         |
| S.) | 1" dia. axle fd. - S.E. cor. of lot #8 -<br>131.00' Pt. of E Sta. 33+58.81              |
| T.) | 5/8" dia. capped re-bar fd. - S.E. cor.<br>of lot #1 of O'Connors Point Allot.<br>No. 1 |
| U.) | 5/8" dia. capped re-bar fd.   |

INDEXED ON MAP  
INDEX 1044

C. Nichols  
C. Dill  
B. Simmons

May 99

20



FB 711

Resurvey Part of C.R. 254  
Sta. 0+00 to Sta 51+17.05  
Richland Twp. Logan Co., Ohio  
Detail of R/W change  
(Ref. plat X-254)

Data Curve No. 1

A =  $31^{\circ} 49' 51''$   
R = 247.83'  
T = 70.67'  
L = 137.68'  
L.C. = 135.92'  
Da =  $23^{\circ} 07' 09''$   
P.C. - 30.00' Lt. of E Sta. 27+21.82  
P.I. - 36.34' Lt. of E Sta. 27+84.36  
P.T. - 25.00' Lt. of E Sta. 28+44.67

Data Curve No. 2

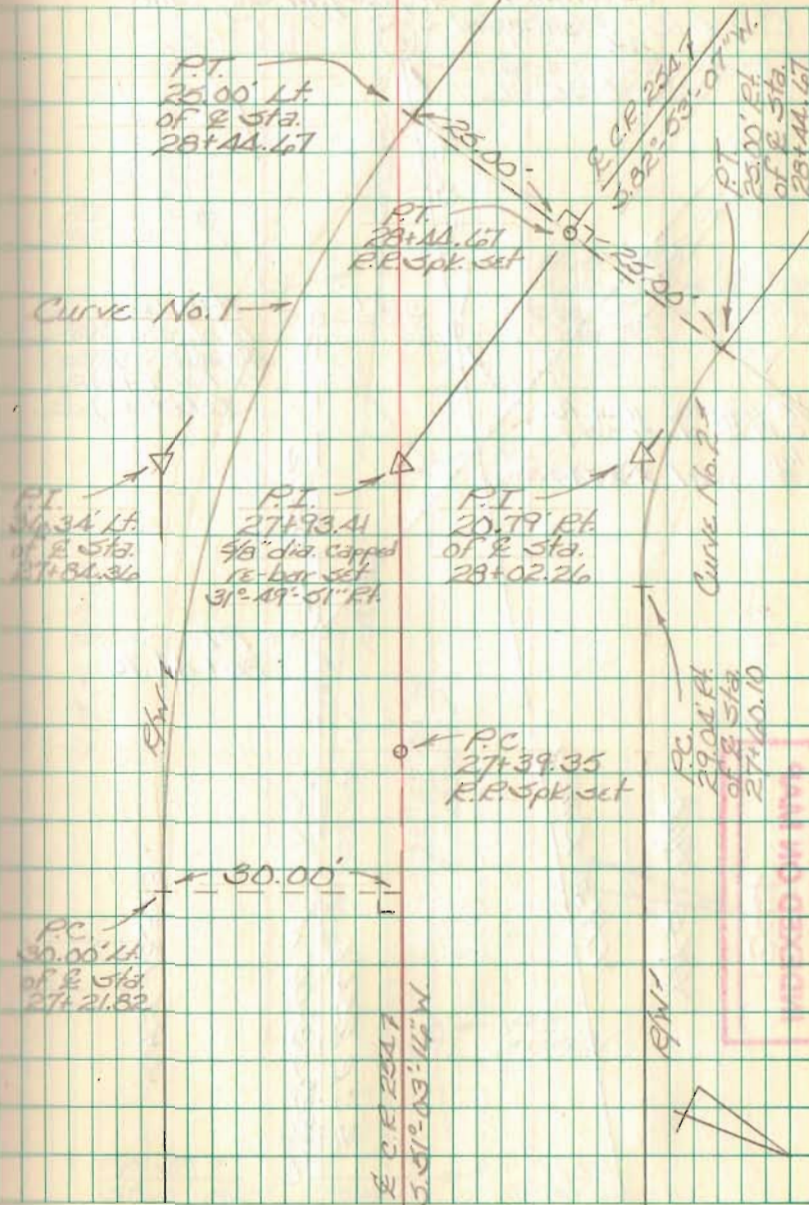
A =  $31^{\circ} 49' 51''$   
R = 131.33'  
T = 37.45'  
L = 72.96'  
L.C. = 72.03'  
Da =  $43^{\circ} 37' 33''$   
P.C. - 29.04' Rt. of E Sta. 27+60.10  
P.I. - 20.79' Rt. of E Sta. 28+02.26  
P.T. - 25.00' Rt. of E Sta. 28+44.67

INDEXED ON MAP  
1344

C. Nichols  
C. Dill  
B. Simmons

May 99

21

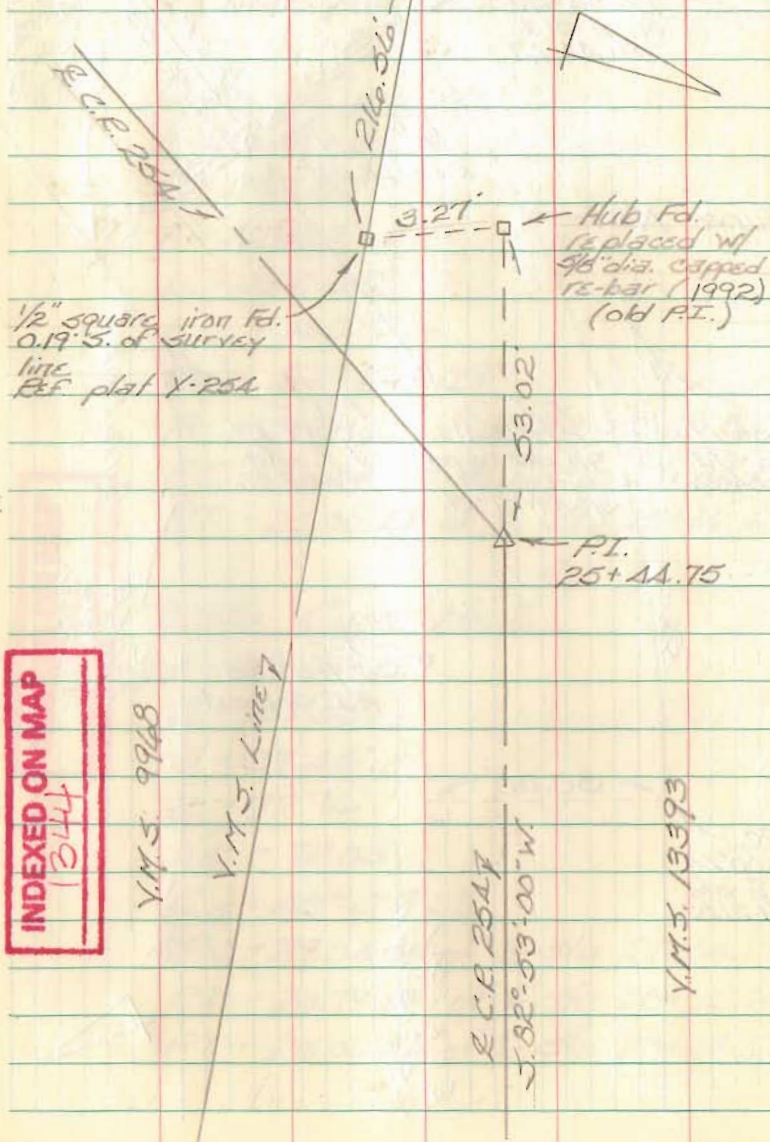


INDEXED ON MAP

FB 711

Resurvey Part of C.R. 254  
Sta. 0+00 to Sta. 51+17.05  
Richland Twp., Logan Co., Ohio

Concrete Monument  
Fd.

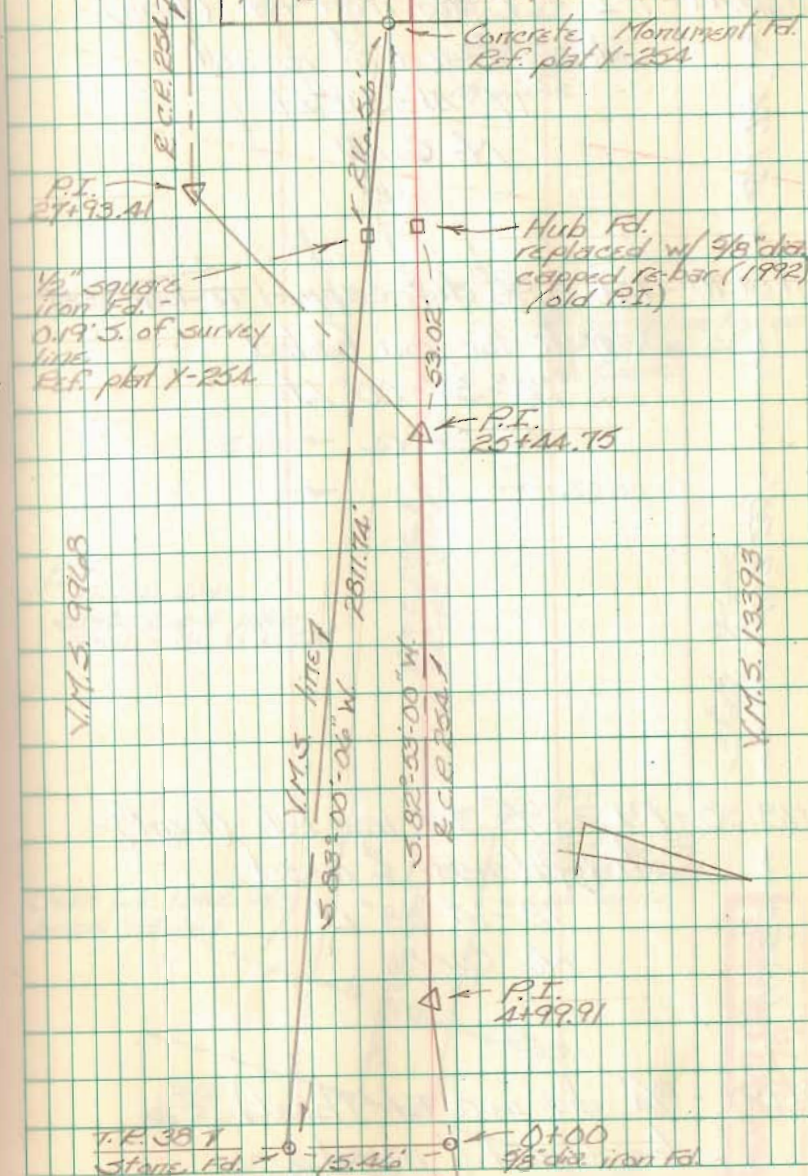


C. Nichols  
C. Dill  
B. Simmons

May 99

22

lot #1 lot #2 lot #3 ← O'Connors Allotment



FB 500

O'CONNOR ROAD # 254  
Richland Twp.

Note 5' was taken from lots  
71-70-69-68-67-66-65-  
V.M.S. Line being  $\frac{1}{2}$  of Road  
and 20' from lots as laid out.

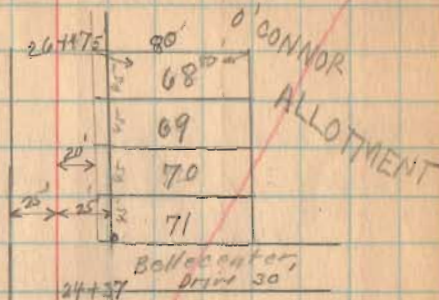
{ See BOOK 560 for  
Change in Road.

1344  
INDEXED ON MAP

0+00  $\frac{1}{2}$  Road #

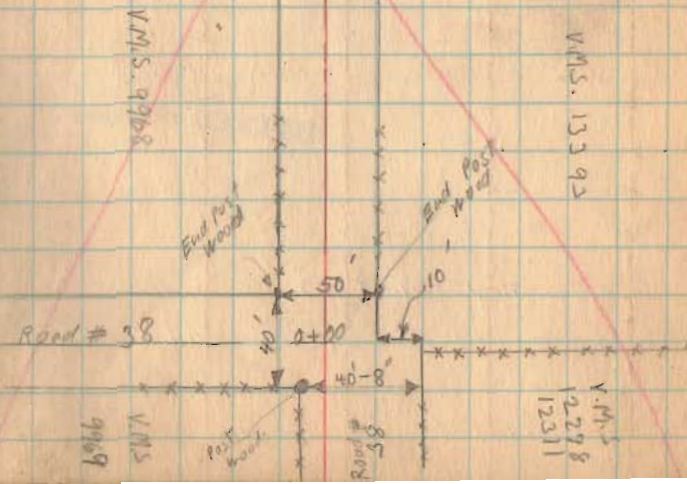
Apr-1-187929

Wright  
McKinnon  
Antoine  
Wickersham



O'Connor.  
20+30 XXXXX  
Williams

50'



FB 500

O'CONNOR road

Measured 50' from lot lines of  
Marysville Allotment.

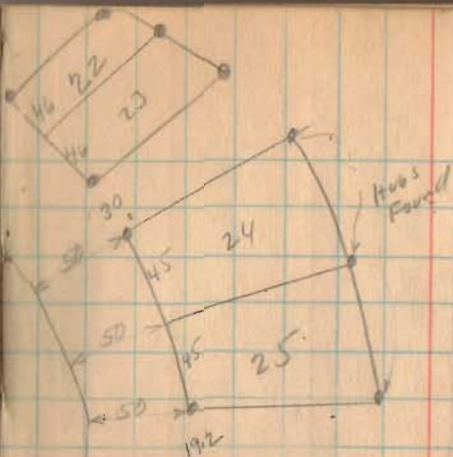
I have shown lot corners found.

1344  
INDEXED ON MAP

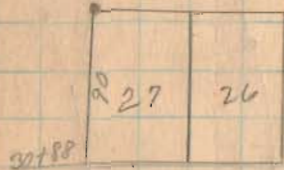
lots 71-70-69-68-67-66-65-1-2-3  
are in O'Connor's Allotment.  
Other lots are in Marysville  
Allotment.

4-18-25

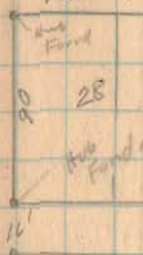
8



See Book 580  
Page 36 for  
change in  
road.

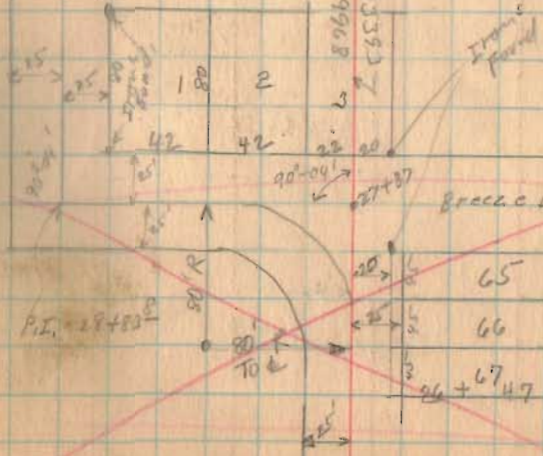


Toms Road 30'



# Road Station 13583  
# Road N.W. 9968

$\Delta = 90^{\circ}-04'$   
 $D.I. = 27+87$   
 $P.C. = 27+07$   
 $P.T. = 28+32E$   
 $R = 80'$   
 $\text{Length on A.V.C.} = 125.76$   
 $T = 80'$



See  
note  
Page  
7

FB 500

O'CONNOR ROAD

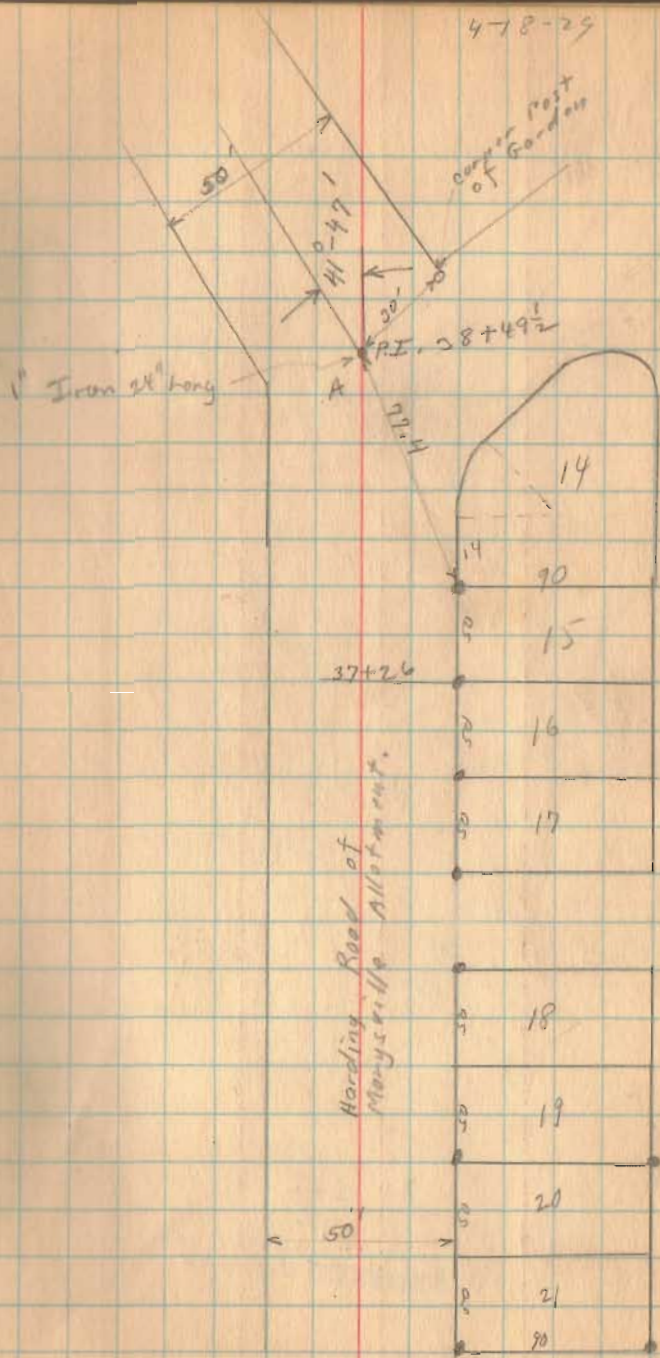
4.

1344

INDEXED ON MAP

478-29

9



FB 500

O'CONNOR ROAD.

$$P.I. = 41+64$$

$$\Delta = 84^{\circ}-50'$$

$$D = 50'$$

$$T = 108.10$$

$$R = 118.31$$

$$L = 169.67$$

$$P.C. = 40+55.22$$

$$P.T. = 42+25.60 \quad \text{Also P.C.C.}$$

1344  
INDEXED ON MAP

4-18-29

10

$$P.I. = 43+08$$

$$\Delta = 84^{\circ}-15'$$

$$T = 82.40$$

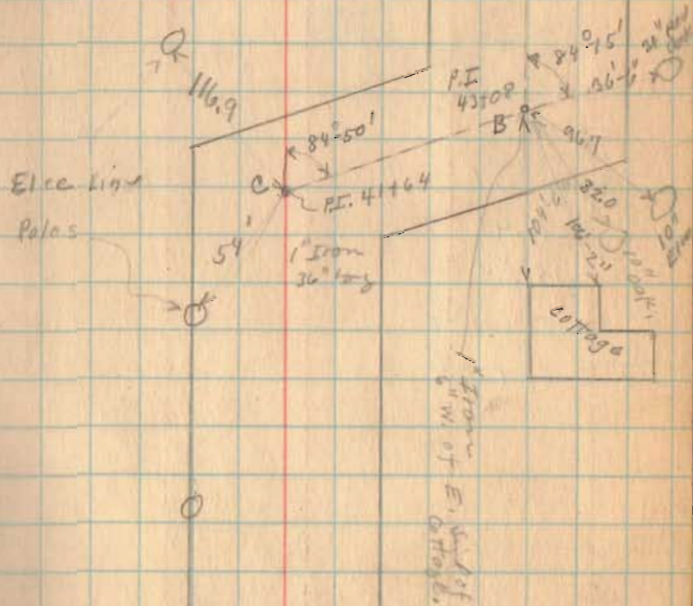
$$R = T \cot \frac{\Delta}{2}$$

$$R = 96.1$$

$$L \text{ Length on Arc} = 121.2$$

$$P.C. = 42+25.60$$

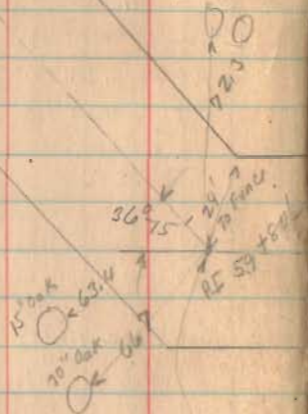
$$P.T. = 43+46.80$$



FB 500

O'CONNOR ROAD #254

$PI = 59 + 80 \frac{1}{2}$   
 $\Delta = 36^\circ - 15'$   
 $D = 24'$   
 $T = 78.71$   
 $R = 240.49$   
 $L = 151.04$   
 $PC = 59 + 21 \frac{80}{100}$   
 $P.T. = 60 + 52 \frac{80}{100}$



1' x 5' Iron 24'  
Long by Stake.

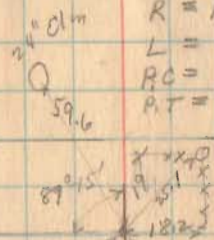
1344

INDEXED ON MAP

4-18-29

11

$PI = 52 + 50 \frac{1}{2}$   
 $\Delta = 89^\circ - 15'$   
 $D = 40'$   
 $T = 144.25$   
 $R = 146.19$   
 $L = 222.2$   
 $PC = 51 + 14 \frac{2}{100}$   
 $P.T. = 53 + 37 \frac{4}{100}$



1' Square Iron  
3/4 Stake

5056  
D 416  
9/16

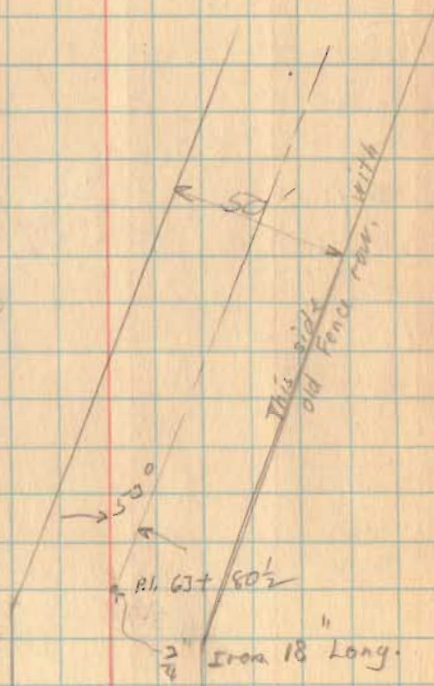
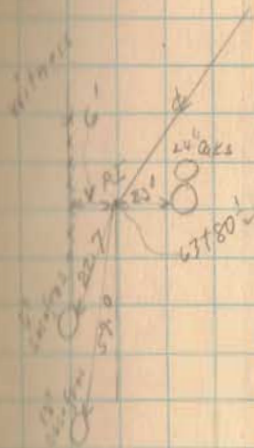


FB 500

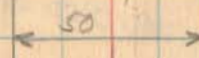
O'CONNOR ROAD

4-18-29

12



- AL = 67+80 1/2
- A = 53°
- B = 30°
- T = 95.29
- R = 171.11
- L = 176.67
- AC = 62+85.2
- AT = 64+66.9

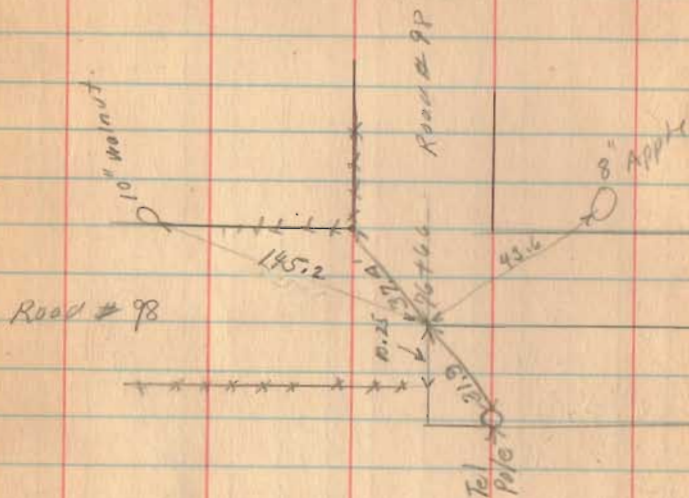


1344

INDEXED ON MAP

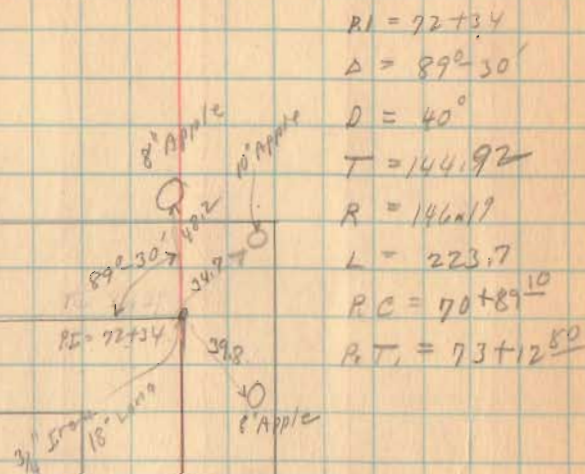
FB 500

O'CONNOR ROAD



4-18-29

10



$PI = 72+34$   
 $\Delta = 89^{\circ} 30'$   
 $D = 40'$   
 $T = 144.92$   
 $R = 146.17$   
 $L = 223.7$   
 $PC = 70+89^{10}$   
 $PT = 73+12^{50}$

1344  
INDEXED ON MAP

This line with old  
feels line