

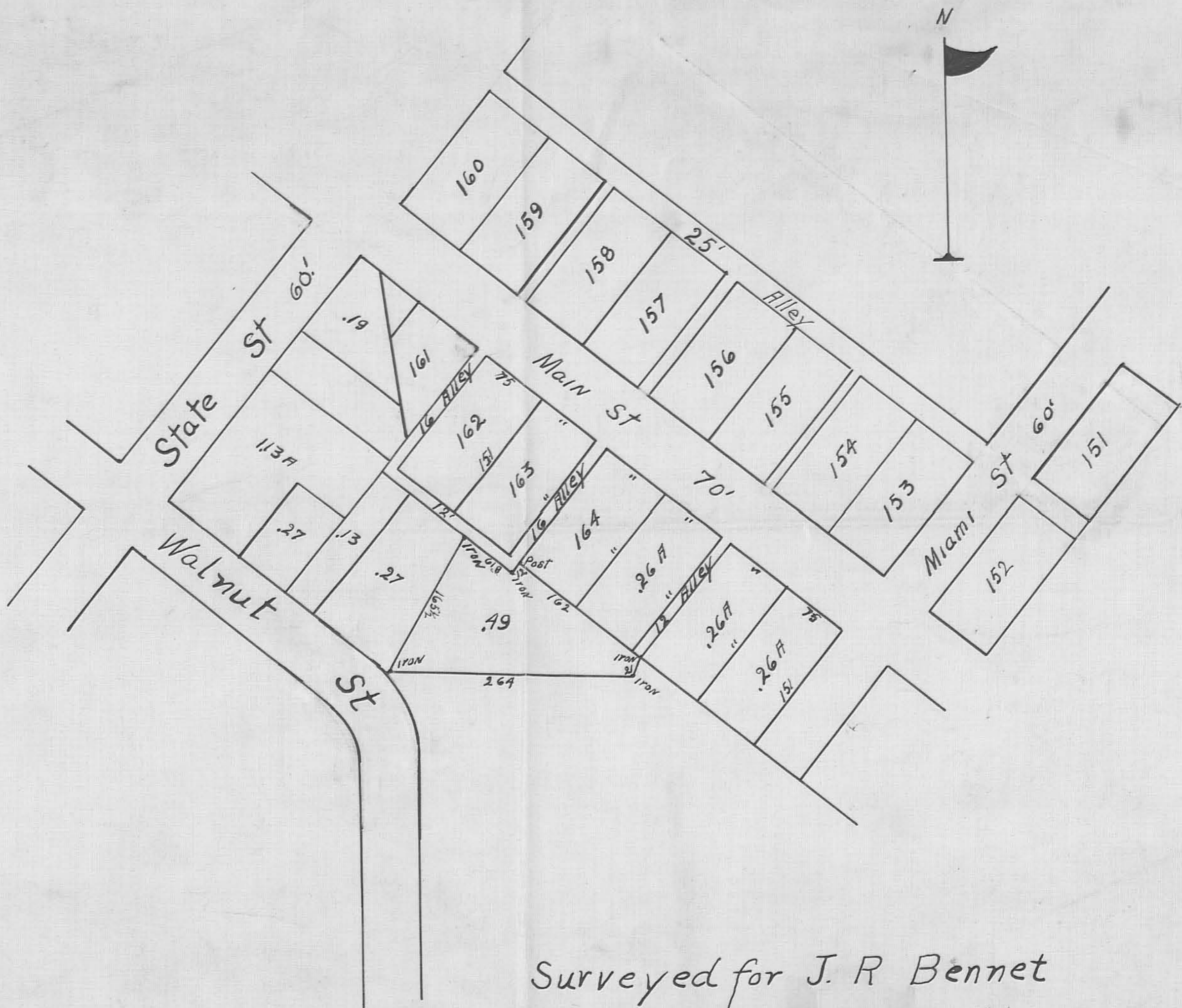
1020  
A-110-1

Description from J.R. Bennet to W.A. Sickles.

Being in V.M.S. 9972 and in the Village of Belle Center being the same tract of land conveyed by Lucy A. Wable to Jesse R. Bennet recorded in Vol. 124, Page 154.

Beginning at a post and iron pin 186' Southwest of the center of Main St. and at the Southwest corner of Lot Number 164; thence South 51° East 162' to an iron pin in the Southwest corner of another .26 acre tract now owned by the Trustees of the Presbyterian Church of Belle Center; thence South 21° West 21' to an iron in a fence line; thence North 88° West 264' to an iron in the edge of Northwood pike and 100' from R.H. Blooms Lot line and cement walk; thence N. 30° East 165½' to an iron pin in the South line of a 12' alley; thence South 51°E. 61.8 ft. and with the South side of alley to an iron pin at the end of alley; thence North 40° East 12' to place of beginning containing .49 of an acre more or less.

1D



Surveyed for J. R. Bennet  
 Belle Center O

1285 IP  
 INDEXED ON MAP

By J.A.MCK

See Book 521 Page 24