

15 lines  
200 words  
14  
- 1.20  
1.24

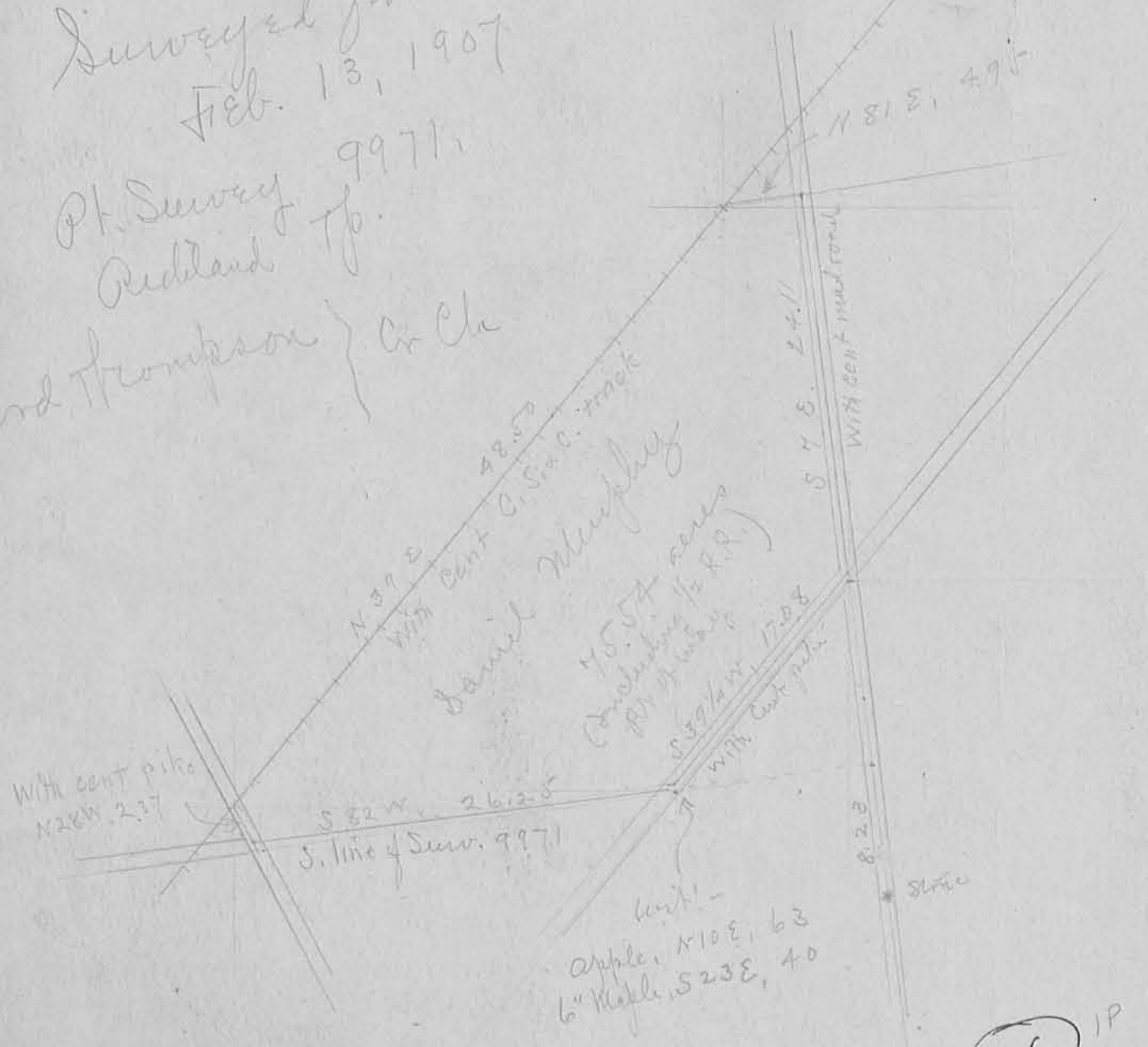
3 lines  
200 words  
7.50  
1.20  
1.80  
1.00

Surveyed for Daniel Murphy

Feb. 13, 1907

Pt. Survey  
Redland Tp.

Ferd Thompson } Co. Clk

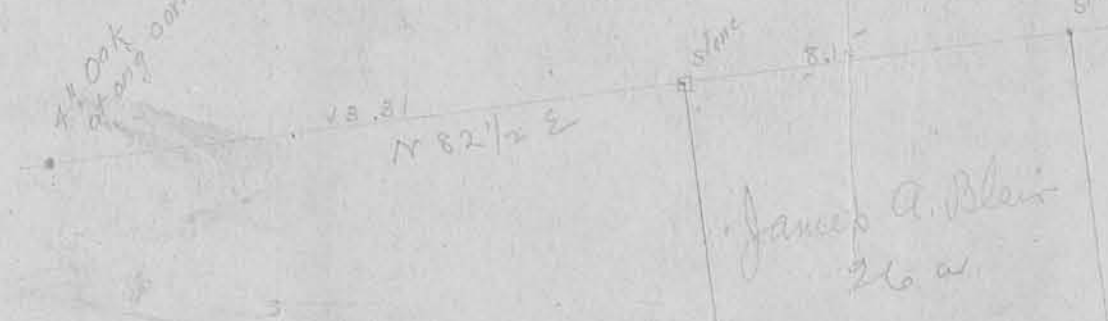


Apple, N 10 E, 63  
6" Maple, S 23 E, 40

976 IP  
INDEXED ON MAP

N

\* 1 Oak  
at ang corner



stone set by M. H. McCormick  
about 15 years ago

Alex and Benj  
Glasgow

James A. Blair  
26 a

Surv 9988  
9997 Redland Tp

Surveyed for Jno A. Blair  
Jan. 30, 1907

The purpose of this survey was to  
establish the NEK of Blair's 26a tract.  
Found stone set by M. H. McCormick  
from witness tree then standing but  
now cut down (and grubbed up) 10 years ago

INDEXED ON MAP

(976)

Murphy survey  
Richland Twp  
V.M.S. 9971

Thos. B. Shelly.

(6) 55.86

Almena Mansfield  
stone 11.52 1/2 ch.  
Iron Bar  
16 3/4 w 11.10 ch.  
17.53 ch. n 63 1/2 w.  
9 3/4 w 16.04 ch.

Stake  
Stake W.D. 48' 72 1/2 E, .68  
James Woods.

(4) 102.74

Carrie Bridge  
51.51

2 beeches

Edward Bridge  
34.48

9971  
Daniel Murphy  
71.40  
(1)

Burr Oak, 48"  
West 1.39

9972

Swamp Elm, 10"  
S 60 w, 1.18

7.70

SW Survey

58 1/4 W 90 3/10 P

S 80 1/4 W 48.1 p

Richard Elliott

(5) 17.50

Elizabeth Bell

(3) 13.09

9950

Lizzie Simpson

See 92-885 24.70

See 87-883

39.03

New Richland

John Blair

30.00

2P

Nathaniel J Patton

57.70

(96-488)

X 50 2  
Twoches  
11.1 p  
Stake on  
N. Side road