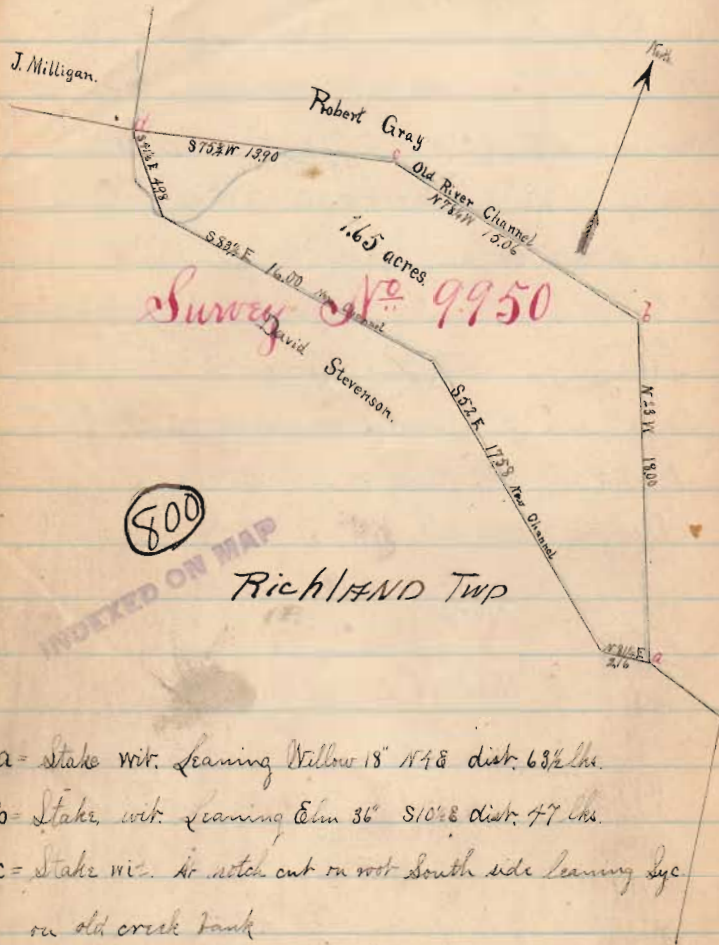


Plat of Land conveyed by David Stevenson to
Robert Gray. Surveyed August 3. 1885.



- a = Stake wit. Leaning Willow 18" N 48 dist. 63 1/2 lbs.
b = Stake wit. Leaning Elm 36" S 10 1/2° E dist. 77 lbs.
c = Stake wit. Air notch cut on root south side leaning lye
on old creek bank
d = old \angle to Milligan & Stevenson. No witness.

Aug. 13... 1885

Commonly road Stake 2^d. Petitioned for
by S. Bogart et al
S. H. Stillman
W. M. Morris } viewers sworn
S. M. Howells }
T. A. Wallace } ch. on
J. A. McMillen }
David Hoover } markers
beginning at point marked A on plat
between S & E

Width of roadway 36 ft
center stakes and S. on right 19' from
center every out. 20'
Set W. 8' ran 40 poles set at 3'
at 60 set W 4' ran from 1321 by MC
came to line trees Hick line marked 9'
to East struck on side as running correct
ed