

Dr Banning-Fisher-Cline Survey

January 9989

Found Stone & Fisher and Scott. Flag.

Found Stone on Marsh Pike & Brown
 " Iron bar " " " & Britton

Produced & Marsh Pike to + C.S. & R.R.

Chained south \pm R.R. 4.09 ch line ^{through} _{line}715.03 ch (deed det.) to & Banning end _{line}

Set int. f. over stone & Brown

Turned \angle 90'03" with & Marsh Pike
 This line just East of wild cherry
 on Brown Land.

(This line intersects & R.R. 5' north of
 & Banning + Cline as found above.

Set old hinge & R.R. on this line for
 & Banning + Cline, as this is in line of
 old fence row.

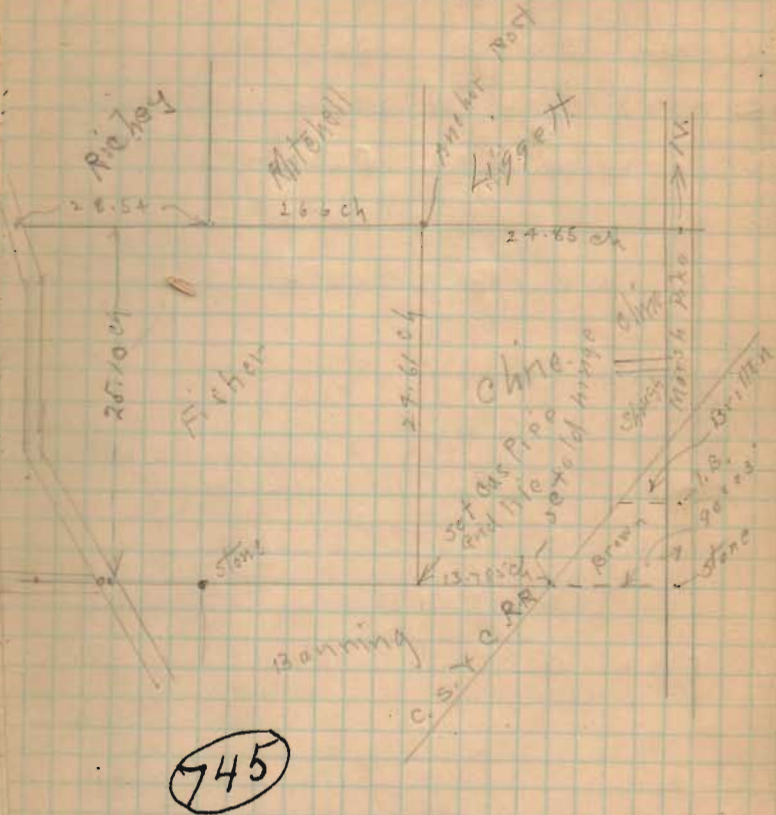
Chained west 13.375 chs (deed det) set Gas
 Pipe tile for & Fisher Cline and Banning
 wild cherry on line 3.15 ch from hinge.

This \times is in line with old fence row between
 Cline and Fisher.

Chained N. from this corner 29.61 chs
 to Anchor Post. & Liggett, Cline & Fisher.

Oct 24/02 cold, rainy.

Feed Post Gen L. Fisher - help.
 Clyde Christwell F. Cline



INDEXED ON MAP