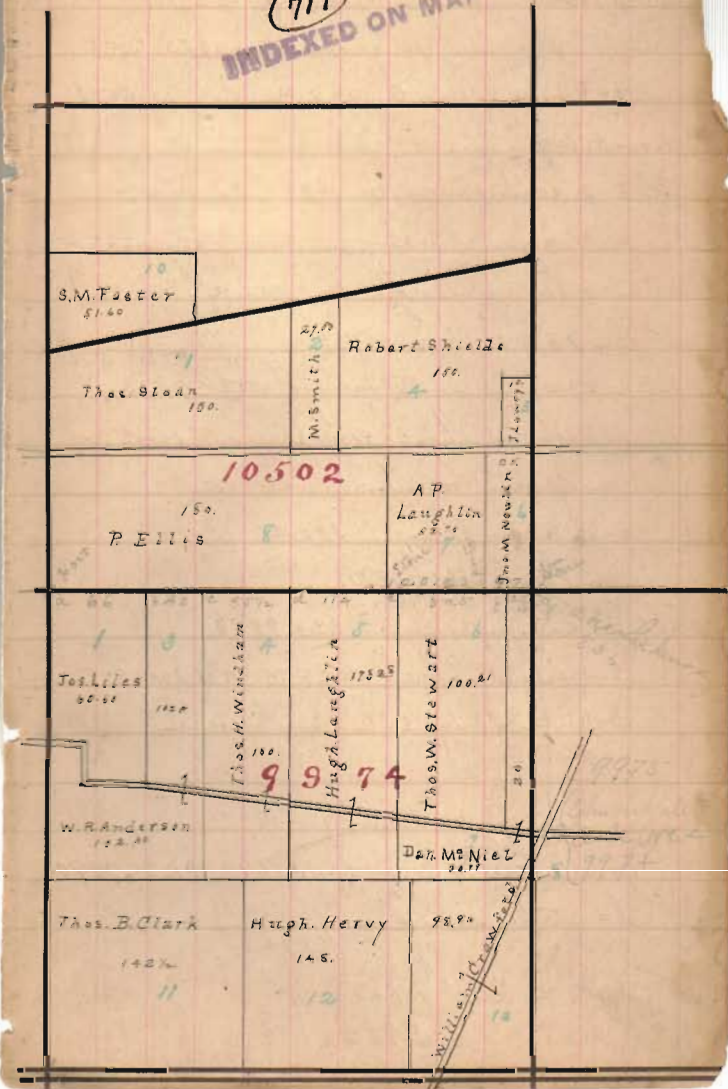
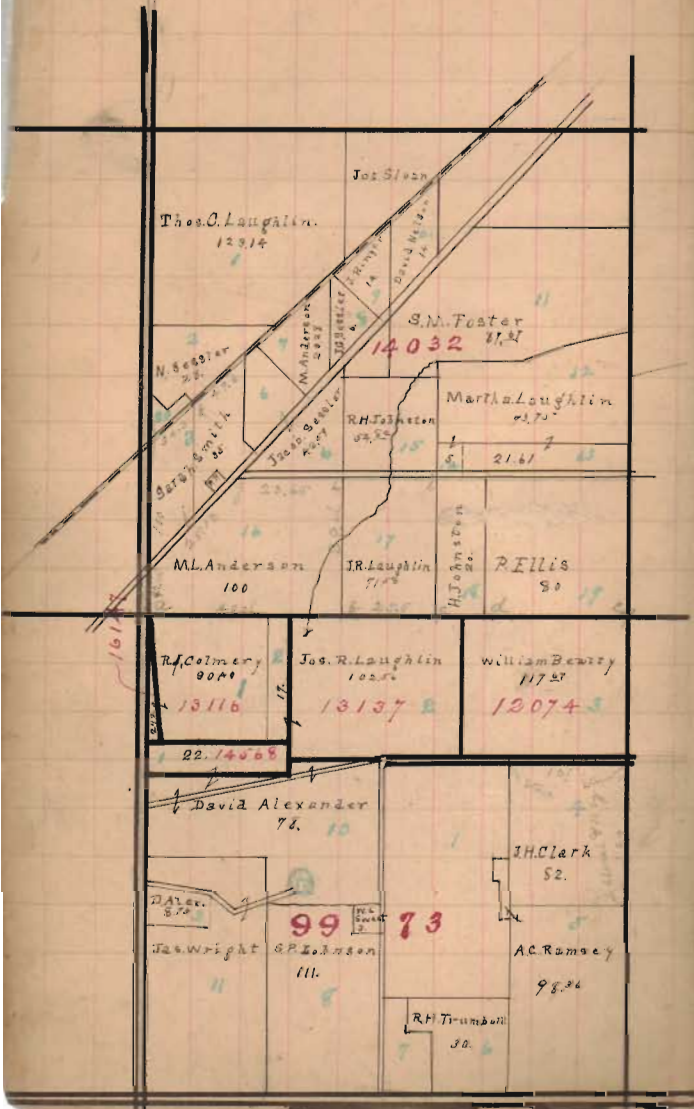


162  
16276

Richland and Rushcreek Twp.

719

INDEXED ON MAP



9990. j = small ash & 2 trees 322 9997  
 g = bush & sug & dogwood 322 9998  
 f = elm & 2. Elm 0. a = 2 trees

Book Surv. page 180. March & July 1820

9994 f = 2 trees & one 322 9995, k = 200  
 s = 2 trees & bushes; w = bush & sugar  
 u = 2 trees & sug. one 322 a

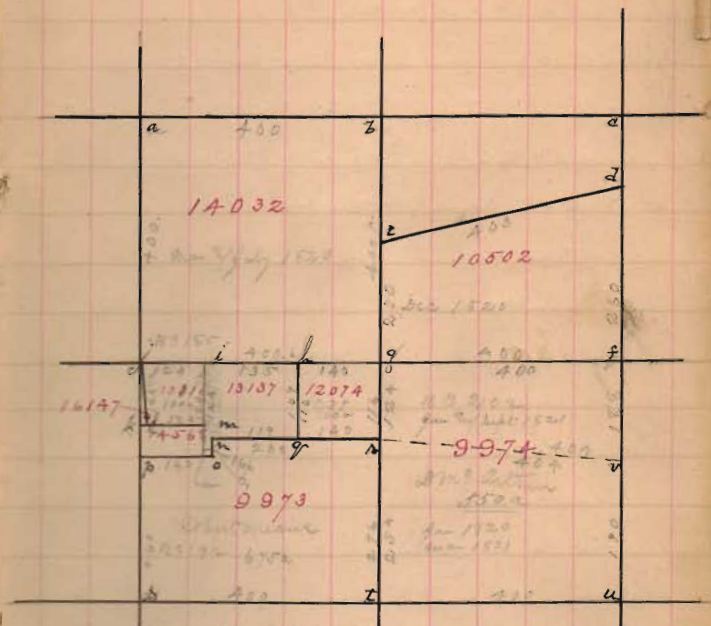
Jan 1820 Mar 1821

9994 j = 2 trees bushing & maple 322 9995  
 w = bush and sug. s = 2 maple from wood and  
 on an and on elm 322 9996  
 g = 2 trees & sug. 322 a  
 Jan 1821, Sept 1821

9996 g = bushing & dogwood 322 9997  
 f = maple elm & ash 322 9998 & 322 9999  
 d = bush & sug. e = ash sug & bush  
 Dec 1820 Book Surv page 221

9994 l = sug. ash & 2. 322 9995  
 g = sug. bush & dogwood 322 9996 & 322 9997  
 h = stakes in new house 9998  
 q = " " " " 9999

John H. Reid 100 a  
 March & Dec 1824



9995 l = bush ash & bushes 322 9996  
 p = sug. sug & Oak; o = bush & small hick wood  
 on side of elm in swamp. s = hick, bushes & 2 trees  
 p = 2 trees & sug. Jan & Mar 1821

10110 j = small ash & 2 trees 322 9997  
 i = 2 trees & sug. one 00 Oak along & iron wood  
 h = 2 trees & 1/2 sug. Dec & Mar 1820, Jan 1820

10135 k = bush and 1/2 sug. Dec & Mar 1814  
 on 40. 0. shanty 75 found 322 Mar 1816  
 on 50. 1/2 p. for stakes in line 9995  
 350 = 1000 = Oak + elm = 9996  
 p = 2 trees & 1/2 p. 12074  
 h = a new =

1452

From Taylor land book p. 118

Sub. No. a stem 2112 Aug 1890 a 21100

7 = 21100 2112 18; 1/2 = Aug 1890 2112 27; 1/2 = Aug 1890 2112 23

9 = 21100 2112 12; 1/2 = Aug 1890 2112 24

Sub. No. a = 2 Bush 1890 & 1891 land

Ch. 1 = 146 p 26.50 ch

June 15 1890, 1891 to 1892 1100 p 150. June 67

Aug. 11. 02. R. D. O. 324. 1890. 1891. 2 bush 1890

Danford Harrod

= 1890 1891 1892 a 1890 1891 1892 1893

= 1890 1891 146 p 26.50 ch

= 1890 1891 127 p 127

10502

Barnett to Ellis 598 1/2 a 1890 1891 page 157 June 67

Barne of 1890 1891 Reg. per 512 1890 1891 1892 1893

= 1890 1891 202 1/2 p 1890 1891 1892 1893

= 1890 1891 412 1/2 p 1890 1891 1892 1893

Barne 1/2 p 1890

= 1890 1891 265 1/2 p 1890 1891 1892 1893

= 1890 1891 103 1/2 p 1890

Ellis to A. C. Bradgins 520 1890 1891 page 140 July 71-72

June 1890. Reg. per - 312 1890 1891 1892 1893

< - 330 1890 1891 p. stem

= 1890 1891 120 1890 1891 stem not used

= with road 1890 1891 1892 stem

\* 3 1/2 1890 103 1/2 p 1890

121074

121074

121074

121074

121074

121074

121074

121074

121074

121074

121074

121074

9974

Vol. C. Davis Rec. p. 96 - 1874, 9974

3-000 like Bush tree

a-000-000 d. 2 inch E of stem etc.

c-000-000 3 inch E of stem

e-000-000 2 inch E of stem

f-000-000 1 inch E of stem

g-000-000 1 inch E of stem, mostly family of fruit, on arch E of stem



14032. Smith

14032

C



Survey M.A. Smith  
 - Beg at Blm 10° 51' 21.7" Blm 10° 51' 21.7"  
 - Ex 1/2 of 200 ft. at 100 ft. R.E.  
 - with R.E. 30° 30' 21.7" to 100 ft.  
 - 510 ft. 21.7" west of station  
 - (Comit. 1/2) to 100 ft. 100 ft.  
 also Beg 100 ft. 100 ft. to 100 ft. 100 ft.  
 - with road 100 ft. 100 ft.  
 - 100 ft. 100 ft. to 100 ft. 100 ft.  
 - 510 ft. 21.7" to 100 ft. 100 ft.  
 also Beg 100 ft. 100 ft. to 100 ft. 100 ft.  
 - with road 100 ft. 100 ft. - 100 ft. 100 ft.  
 - 100 ft. 100 ft. to 100 ft. 100 ft.  
 - 510 ft. 21.7" to 100 ft. 100 ft.  
 with R.E. 30° 30' 21.7" to 100 ft. 100 ft.  
 - 100 ft. 100 ft. to 100 ft. 100 ft.