

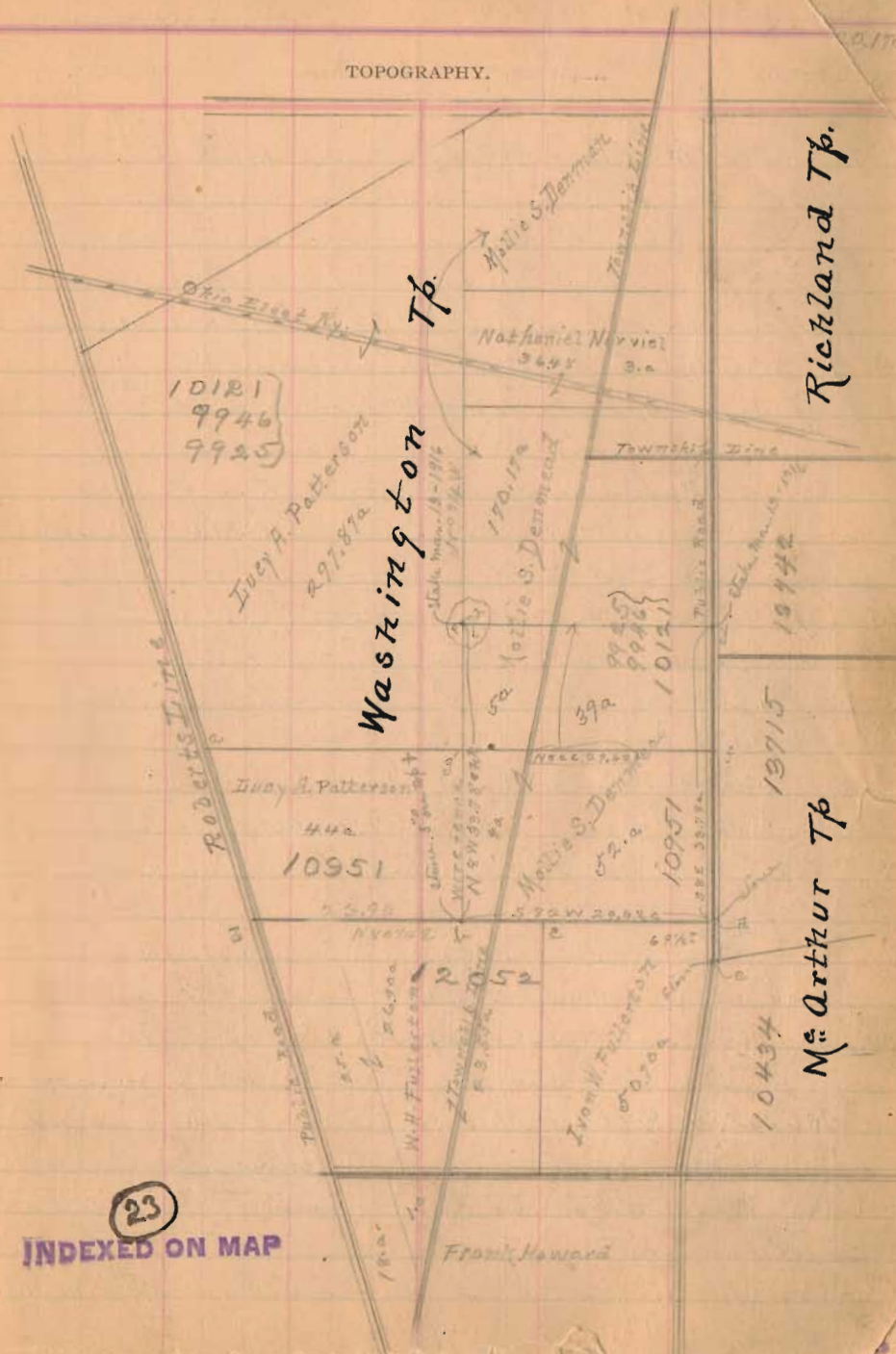
Sanmead survey Mar. 13<sup>th</sup> 1916

Ed. Rungler }  
Hermold Wagner } done

R. P. STUDLEY & Co., Manufacturing

STATION.	ALIGNMENT.	DEFLECTION.	REMARKS.
Durvey 100 a for Mollie S. Denmark in Durr 10951			89°25' 89°46' 101°31'
Course of road & line of survey N 87° W N 8° W			
(1) Start 20' N of stone in road S 82° W			
at 1907 1/2 fall 20' N of stone & mark 5" in top S 97° E			
Mollie S. Denmark & J. B. & Lacey A. Patterson			
Connect course & distance = N 58° 2' W 195.5' = 27.62 chains			
(2) Start 25' E of stone S. W. & Denmark N 8° W			
at 2231 fall 27' E of line fence in between			
Mollie S. Denmark & Lacey A. Patterson			
at 2233 1/2 set stake in line fence = N 97° E 100 a			
Connect course & distance = N 8° W 2230 feet = 33.28 chains			
Note of thumb Durr 10591 & Mine Denmark land & top = N 8° W 19 1/2 chains			
(3) Start at 7 2231 of (2) N 82° E			
at 636 set 7 temp.			
" 640 " N 13/4 "			
" 1100 " T 5 1/4 " at 1900 set 7 dist			
1956' E line Durr 10951 in front road at N 62° 100 a			
Connect course & distance = N 82° E 1955' = 29.62 chains			
(4) Start at stone Durr & Denmark = d			
S 8° W with line same			
at 2230' set 7 in road S 75° E 100 a			
Connect course & distance = N 8° W 2230' = 33.74 chains			
Note f = d & E & Durr 10951 f to j = N 8° W, 14.28 chains			
The North line of Durr 10951 & S line 10951 is lost and unknown, the distances, d to f & f to j taken from record book of original survey (see Record Office) which specifies the width of survey 10951 (North & South) as 7 1/2 poles.			
The 100 acres, d, t, i, j, d, sold by Mollie S. Denmark to Wagner and divided as follows In Wash. Durr 10951 = 40.7/100			
In McArthur Tp. Durr 10951 = 52.2/100			
In Richland Tp. Durr 10951 = 39.2/100			

TOPOGRAPHY.



23  
INDEXED ON MAP

Richland Tp.

McArthur Tp.

lot owners E of Miami at present the same as I said