

Stadia for Location of River

Instrument at Sta. 4+50 Base Line #1
0°-00' on back Tang.

Sta	Az.	Rod.
W.E.	136°-50'	3.90
T.B.	137-45	4.00
W.E.	139-45	4.85
W.E.	173°-10'	1.58
W.E.	143-20	2.83
W.E.	151-15	3.16
W.E.	152-45	4.40
W.E. Island	156-40	2.78
"	142-55	2.52
"	137-35	1.04
"	141-05	1.42
"	160-20	1.27
"	156-35	1.53
"	166-10	2.51
H.E. Cor	199-15	1.23
H.W.	214-50	1.05

INDEXED ON MAP
7811 IP-1

DDOT DIST 7 FB 254

Waterway Area Old BR.
Stationed from face south Abut. 0+00

Distances measured from FL to top of floor

0+00	- 13'-7"	deduct 1'-8" for clearance below BR.
+23	- 15'-0"	
+32	- 17'-11"	W.E.
+40	- 19'-2"	
+50	- 19'-8"	
+60	- 20'-0"	
+70	- 19'-5"	
+80	- 20'-2"	
+85	- 19'-9"	S. Face Pier
+91	- 19'-3"	N. " "
+100	- 19'-11"	
+110	- 20'-0"	
+120	- 20'-7"	
+130	- 19'-11"	
+134	- 18'-9"	W.E.
+140	- 17'-2"	
+150	- 16'-7"	
+160	- 14'-2"	
+170	- 14'-0"	
+176	- 13'-4"	Face N. Abut.

52+00

51+00

50+00

49+00

48+00

INDEXED ON MAP
7811 P 3

SW 53+03
63+02
Fire Dept.

Res
+54

Church
+29
+09
+04

General Store
+67

Alley
+32
Res
+31

Res
+96
+67

Rest. + P.O.
+47
+192

SW
+140
+85 E St

SW 55+0
+53

Store rooms

&

Res

+89

Vac Lot

vacst Bldg +64

+46

Barber Shop + Pool

Alley
+23
48+11

SW 52+03

+92

+72

X X X
+3A
+09

Garage

+46

Bldg Stucco

+67

Alley
+32

Harness + Feed St

+16

BANK

GROC

+66

Drugs

Groc

+19

SW
+11

SW 55+0

+63

+292 St. Room

+24

Garage

Ford Sales Room

+60

Res

+23

Alley

Angle
Lt

57+42.4

61°15'

57+00

25 RT

56+00

25 RT

55+00

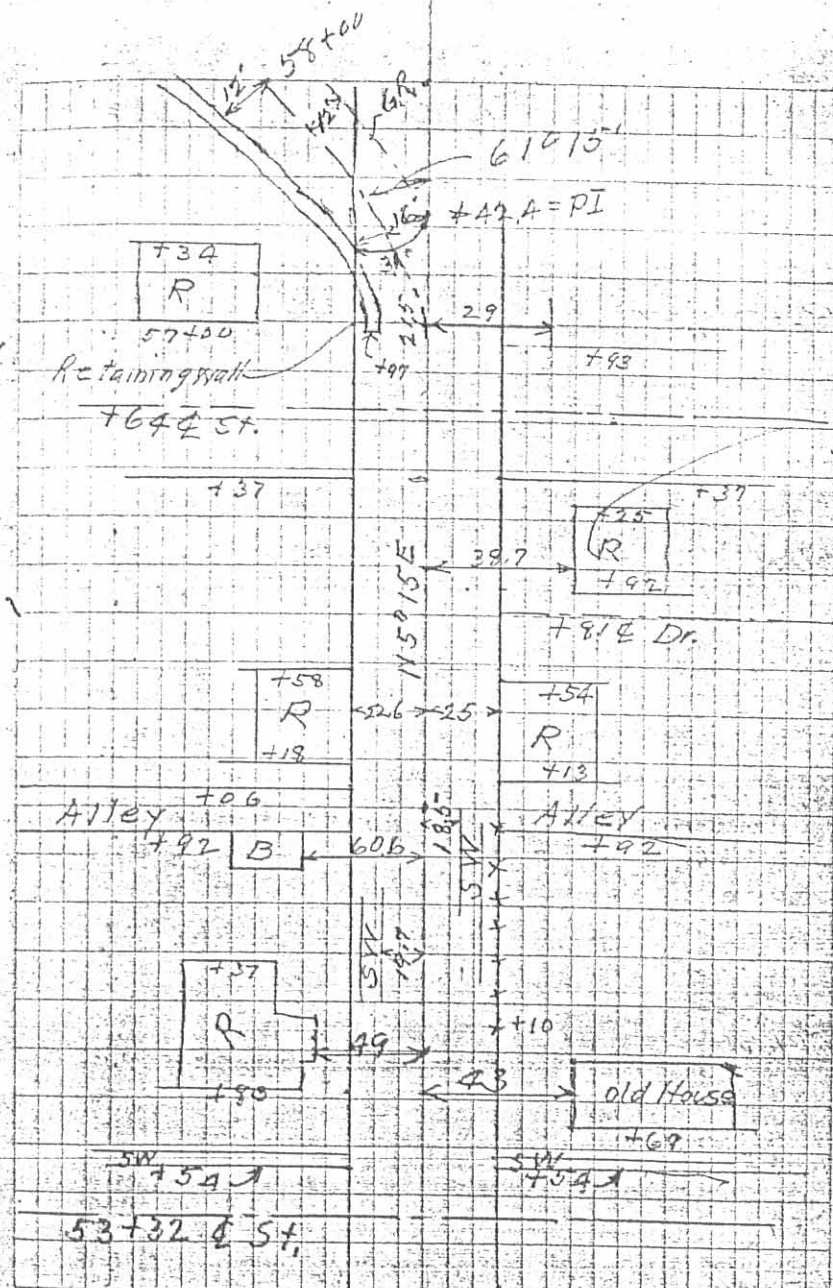


54+00

53+00

INDEXED ON MAP

157/1 P. 4



60+00

59+00

58+00

57+00

56+00

55+00

54+00

53+00

52+00

Survey

2 tack in hub 11, Toe of Rd
SLOPE, marked R.P.

32.8'

32.9%

2 bent nails in ground
Rail Post

32.5'

P.T.
Tack in Hub P.T.
Sta. 59+02.9
Planted field

Sta. 56+00 7°30' Curve
LINE

Sta. 56+00

3°20' Curve

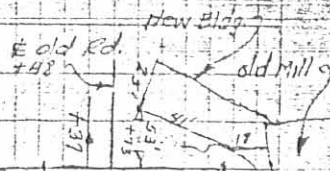
Sta. 56+00 7°30' Curve
LINE

SDOT DIST 7 FB 254

INDEXED ON MAP
78 11 IP-10

32
727

+23



Sta 55+00
Ed. A

Prop. App'd.
to Mill

+50

+52

75+53.6

75+01

74+00

73+01

MONUMENT →

← MONUMENT

75+53.6 Iron Bolt

INDEXED ON MAP

75+53.6 IP-1

73

Angle
Rt

72

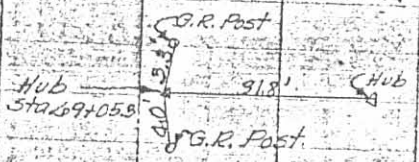
25' Rt

71

25' Rt

70

25' Rt



69+05.9 22°15'
64

0+00

INDEXED ON MAP
7/5/11 B.S.

68

