

Yoder Survey
Richland Township
February 22, 1964

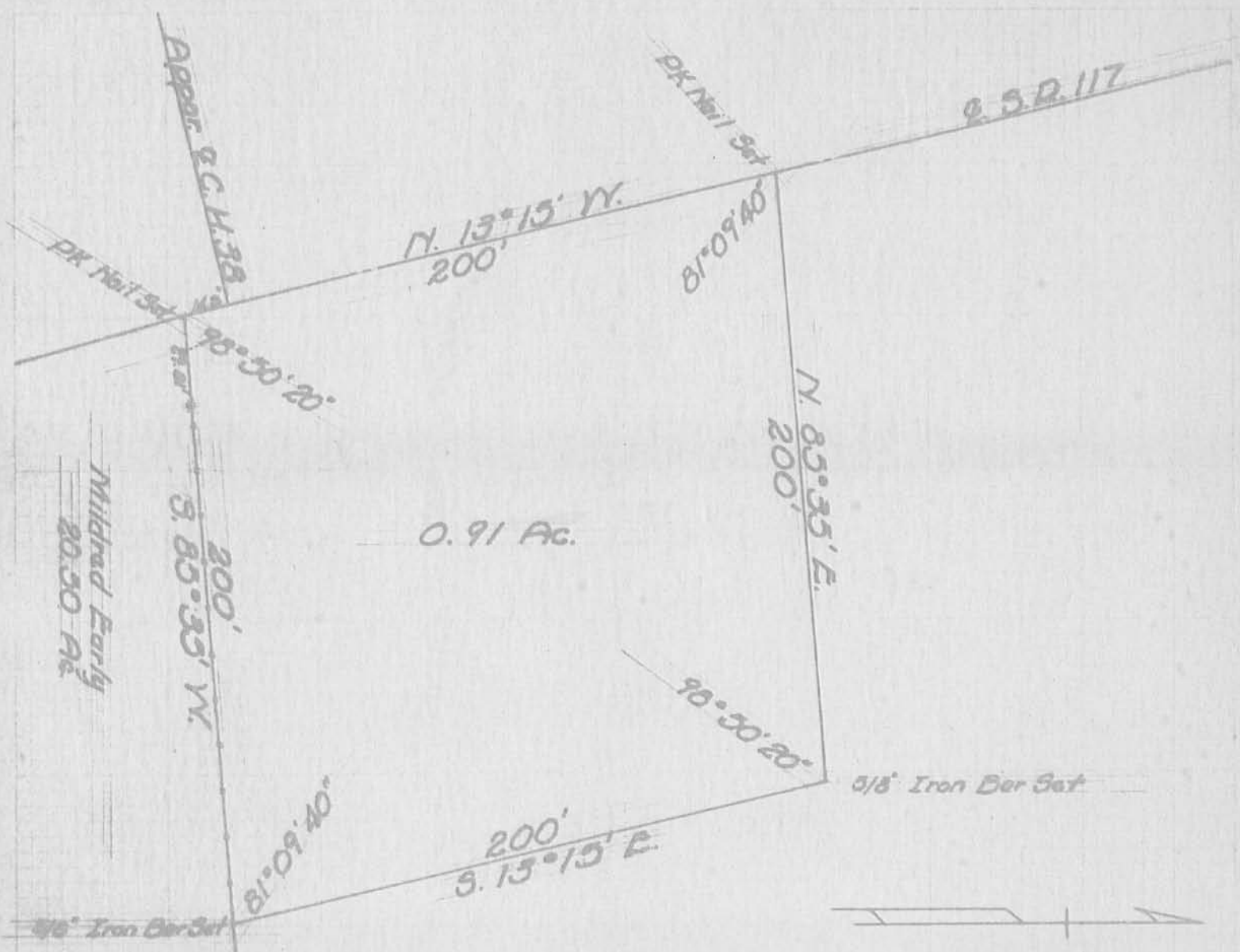
The following real estate situated in Richland Township, Logan County, Ohio and being part of Virginia Military Survey 10503 and more particularly described as follows;

Beginning at the northwest corner of Mildred Early's 20.50 acre tract at a point in the centerline of S.R. 117, said point being Sta. 133+58.2 as shown in Logan County Engineer's Field Book 387, page 18; thence with the centerline of S.R. 117 N.13°-15'W. 200.0 feet to a point; thence N.85°-35'E. 200.0 feet to an iron pin; thence S.13°-15'E. 200.0 feet to an iron pin in the north line of said Early's 20.50 acre tract; thence with Early's north line S.85°-35'W. 200.0 feet to the place of beginning.

Containing 0.91 of an acre more or less.

Surveyed By: Donald R. Lewis
Surveyor-in-Training

Approved By: John R. Doda
Registered Surveyor 4270



YODER SURVEY
 VIRGINIA MILITARY SURVEY 10503
 RICHLAND TOWNSHIP
 February 22, 1964

Surveyed By: Donald L. Lewis
 Surveyor-in-Training
 Approved By: Wm R. Dobb
 Registered Surveyor 4270

3631
 IP

INDEXED ON MAP