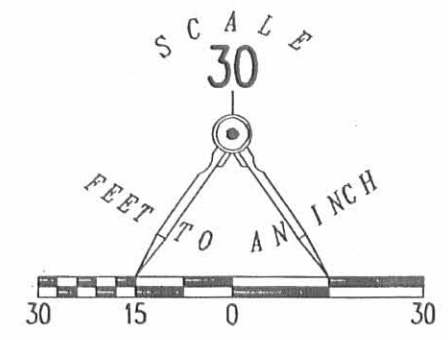
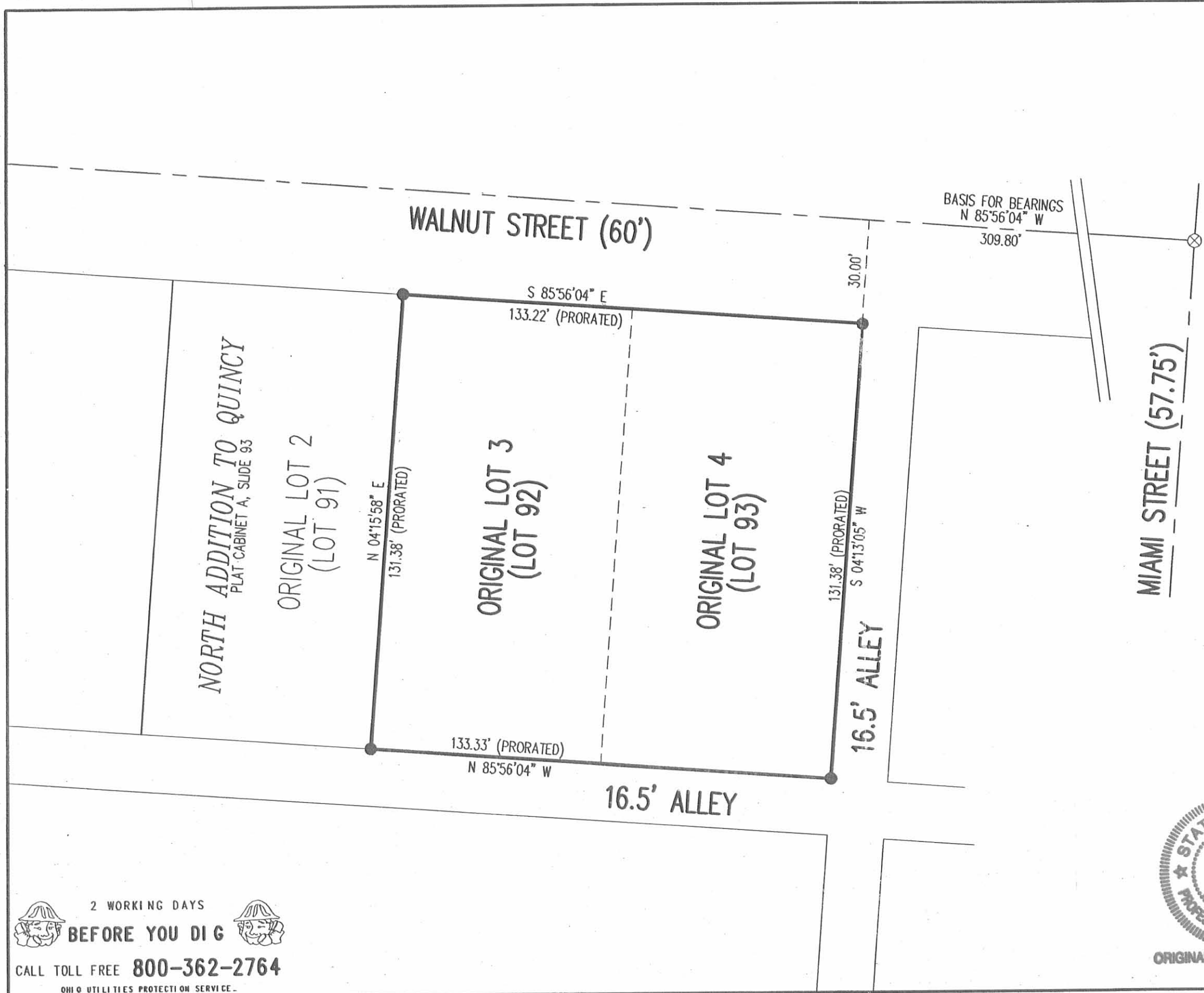


REC'D 7-10-07 SWY OK



LEGEND

- 5/8 INCH IRON ROD SET
- ⊗ RAILROAD SPIKE FOUND

A RETRACEMENT SURVEY OF
ORIGINAL LOT 3 AND 4
NORTH ADDITION TO QUINCY
PLAT CABINET A, SLIDE 93
VILLAGE OF QUINCY
MIAMI TOWNSHIP
LOGAN COUNTY, OHIO

SURVEYED BY:

William K. Bruce
WILLIAM K. BRUCE
PROFESSIONAL SURVEYOR 7437
JULY 5, 2007



ORIGINAL STAMP IN GREEN

COPYRIGHT 2007 BY:
LEE SURVEYING & MAPPING CO., INC.
117 North Madriver Street
BELLEFONTAINE, OHIO 43311
(937) 593-7335
surveys@lsminc.us
ADW D0707 4467077 L-4467077-3

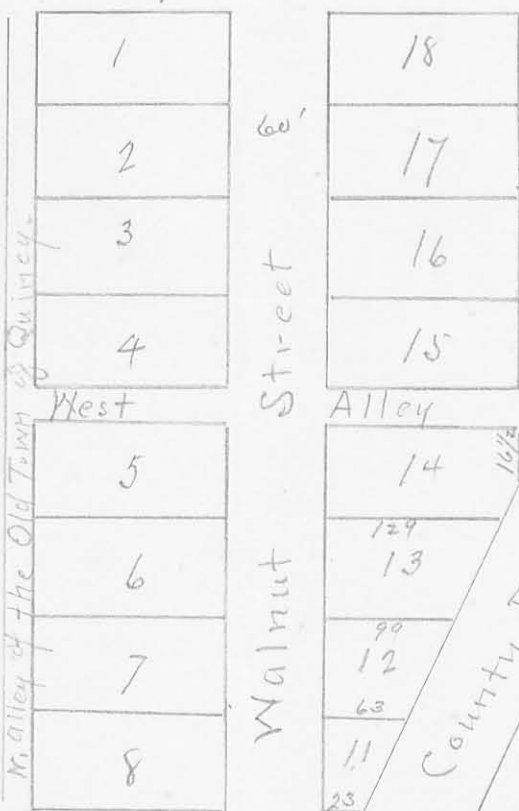
2 WORKING DAYS
BEFORE YOU DIG
CALL TOLL FREE 800-362-2764
OHIO UTILITIES PROTECTION SERVICE

INDEXED ON MAP
943 1P

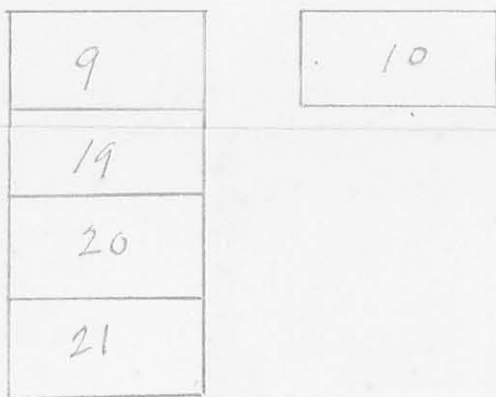
INDEXED ON MAP

North Addition to Quincy - Walnut St

Canby Street Extended



(Miami) Main Street Extended



The annexed plat represents the north addition to the town of Quincy as surveyed by me beginning at the SW corner of Lot No. 1 at a stone planted by me for a beginning corner. The lots from No. 1 to No. 10 inclusive front on Walnut St. four poles and extend back eight poles. Walnut St. runs due East and West and is 60 feet wide. The fractional lots from 11 to 14 inclusive front on Walnut St. 4 poles and extend north to a county road bearing N 59 1/2 W, the distance marked on the lines in feet - Miami Street is 57 3/4 feet or 3 1/4 poles wide. The alleys are each 16 1/2 feet.

I certify the foregoing to be a true description of survey made by me as aforesaid

January 20th 1836

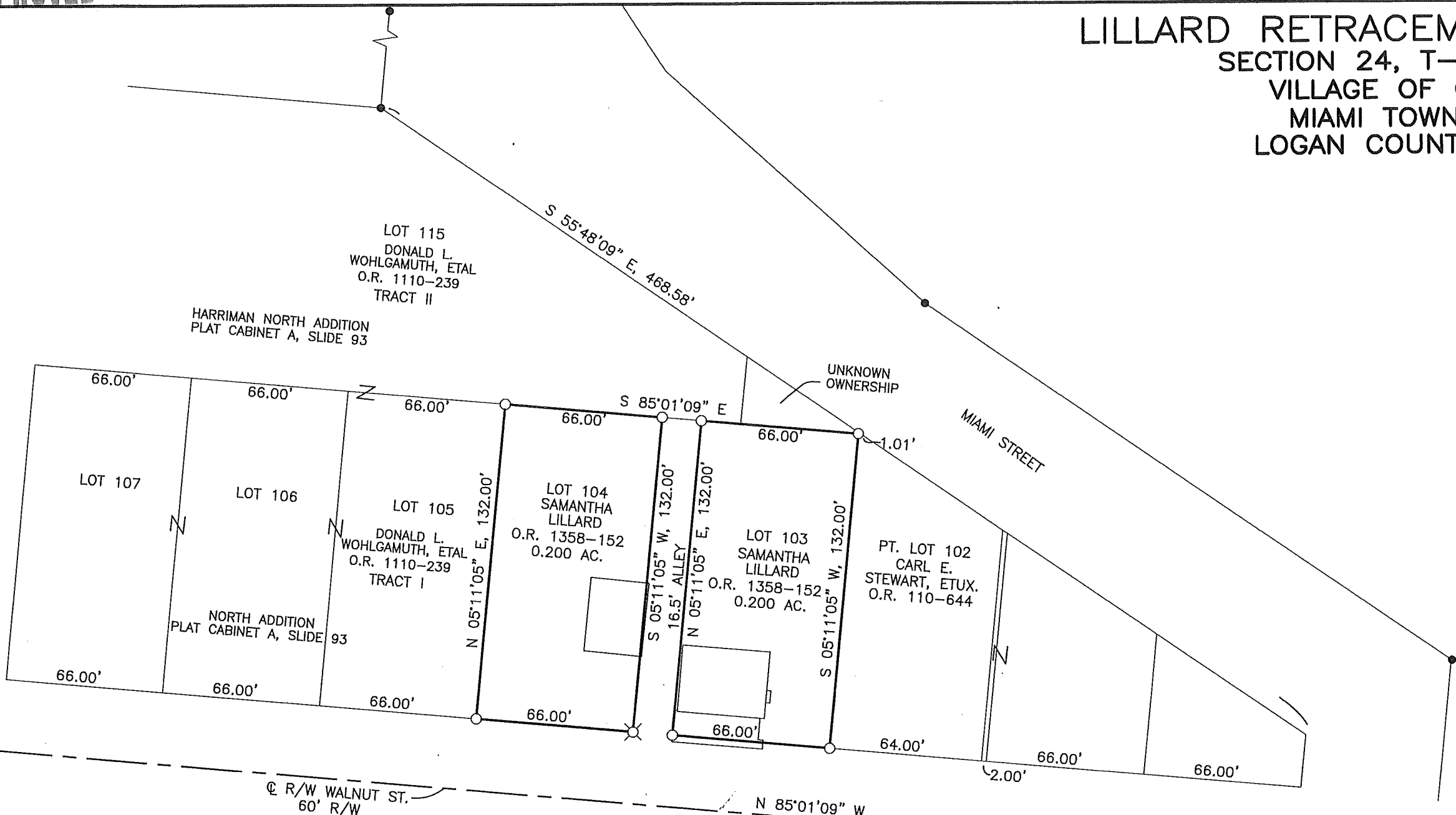
Dan Hopkins S.L.C

2-21-2020

APPROVED

LILLARD RETRACEMENT SURVEY

SECTION 24, T-3, R-13
VILLAGE OF QUINCY
MIAMI TOWNSHIP,
LOGAN COUNTY, OHIO



REFERENCES
LOGAN COUNTY
ENGINEER'S SURVEYS:
NO. 943 NO. 3131
NO. 7815

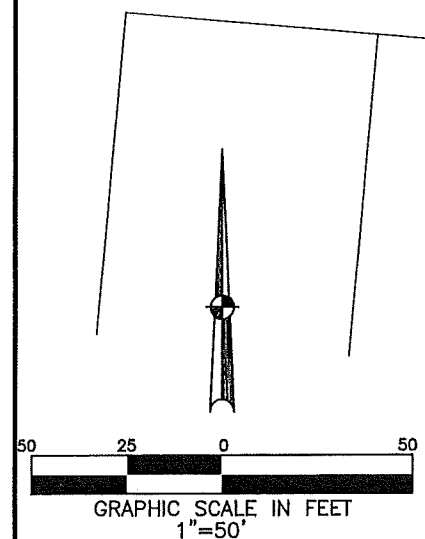
BASIS OF BEARINGS:
BEARINGS ARE BASED ON STATE PLANE
COORDINATES, NAD83, OHIO NORTH ZONE

RETRACEMENT OF LOTS 103 & 104 IN THE
VILLAGE OF QUINCY. FEBRUARY 12, 2020.

- LEGEND**
- CONCRETE R/W MONUMENT
 - 5/8" IRON PIN FOUND
 - MAG NAIL FOUND
 - 1" IRON BAR FOUND
 - RAILROAD SPIKE LOCATED
 - 1" MAG SPIKE SET
 - 5/8" DIA. IRON PIN SET
 - 5/8" IRON PIN FND. IN MON. BOX
 - ▲ STEEL "T" POST FOUND WITH TREE GROWN AROUND IT



Britt R. Havenar
BRITT R. HAVENAR, P.E., P.S.
OHIO REGISTERED PROFESSIONAL SURVEYOR #8266
HAVENAR ENGINEERING & SURVEYING, INC.
AMY L. HAVENAR, P.E.
BRITT R. HAVENAR, P.E., P.S.
10860 SIDNEY-FREYBURG ROAD
SIDNEY, OHIO 45365
(937) 492-7408
EMAIL: abhavenar@embarqmail.com



INDEXED ON MAP
943