

# Lee Surveying and Mapping Co., Inc.

Land Surveys • Topography • Subdivisions • Construction Layout

117 N. Madriver St.  
Bellefontaine OH 43311



Phone: (937) 593-7335  
Fax: (937) 593-7444

## ALLEN 1.062 ACRES

Lying in Section 14, Town 1, Range 8, Pleasant Township, Logan County, Ohio

Being out of the Shirley Ann Allen and John Allen original 58 acre tract as deeded in and described in Official Record 570, Page 563, Tract II of the Logan County Records of Deeds and being more particularly described as follows:

Beginning at a 5/8 inch iron rod with a Logan County Engineer's cap found in a monument box at the southeast corner of Section 14 and in the center-line of Township Road 75 (40 feet wide).

THENCE, with the east line of Section 14 and the center-line of Township Road 75; N 06°-00'-25"W, a distance of 1180.22 feet to a MAG nail set as the TRUE POINT OF BEGINNING, passing a stone found in a monument box at 722.96 feet.

THENCE, S 77°-15'-05"W, a distance of 148.00 feet to a 5/8 inch iron rod set, passing a 5/8 inch iron rod set at 19.86 feet.

THENCE, N 06°-00'-25"W, a distance of 314.67 feet to a 5/8 inch iron rod set.

THENCE, N 77°-15'-05"E, a distance of 148.01 feet to a MAG nail set, passing a 5/8 inch iron rod set at 128.15 feet.

THENCE, with the east line of Section 14 and the center-line of Township Road 75, S 06°-00'-25"E, a distance of 314.67 feet to the point of beginning.

Containing 1.062 acres of which 0.143 acre is with in the highway right-of-way.

The basis for bearings is the east line of Section 14 and the center-line of Township Road 75 being, N 06°-00'-25"W, and all other bearings are from angles and distances measured in a field survey by Lee Surveying and Mapping Co., Inc. on December 22, 2003.

Description prepared by:

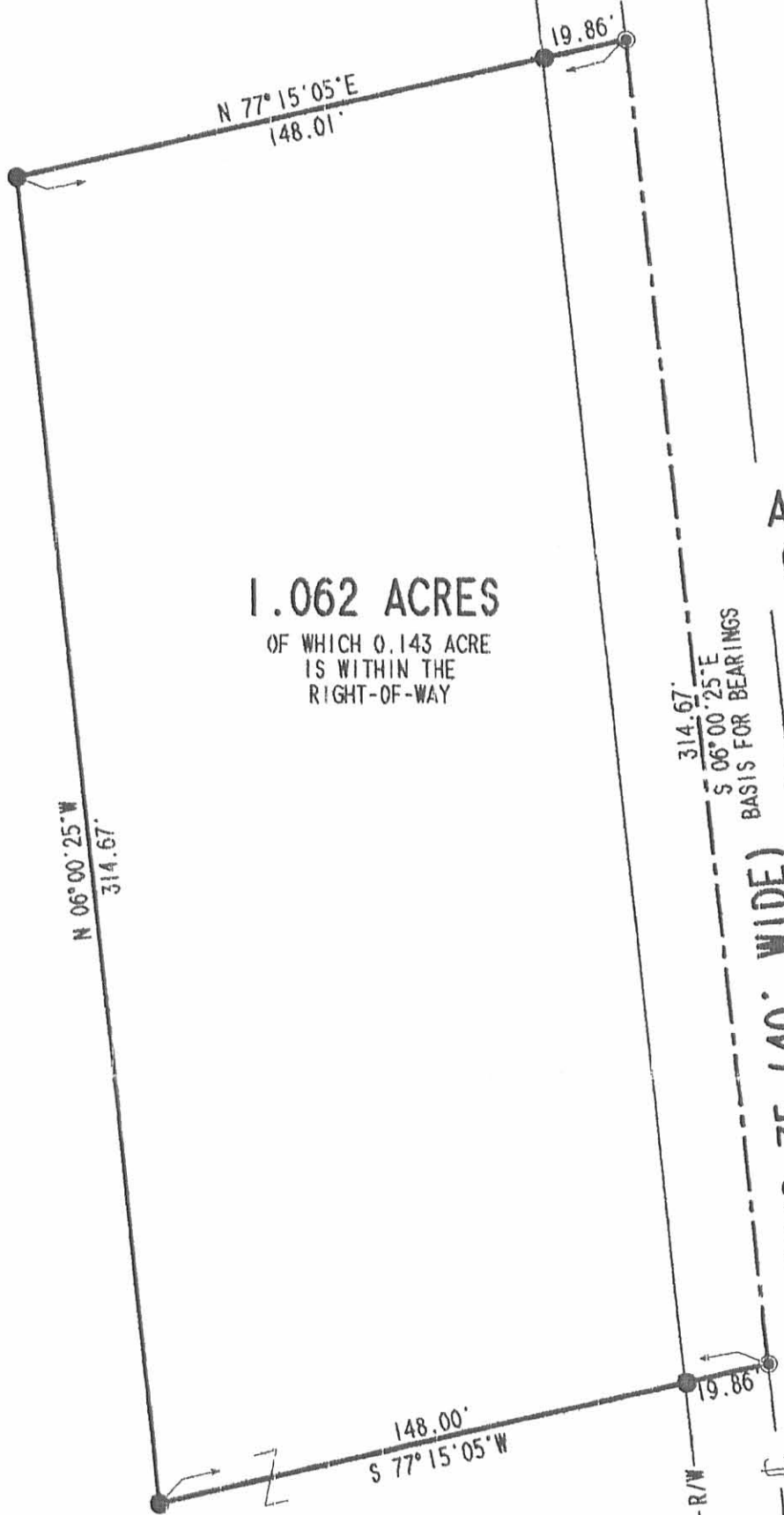
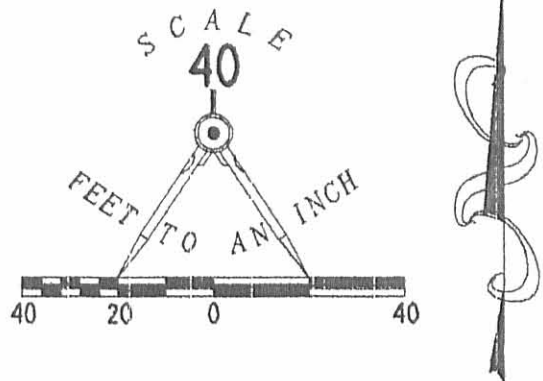


*Jeffrey I. Lee*  
Jeffrey I. Lee

Professional Surveyor 6359  
December 31, 2003

L-3732

INDEXED ON MAP  
9467 1D



**1.062 ACRES**  
OF WHICH 0.143 ACRE  
IS WITHIN THE  
RIGHT-OF-WAY

A SURVEY OF A 1.062 ACRE TRACT OUT  
OF THE ORIGINAL SHIRLEY ANN ALLEN  
AND JOHN ALLEN  
58 ACRE TRACT  
OFFICIAL RECORD 570, PAGE 563  
TRACT II  
SECTION 14, TOWN 1, RANGE 8  
PLEASANT TOWNSHIP  
LOGAN COUNTY, OHIO

SHIRLEY ANN ALLEN  
AND JOHN ALLEN  
ORIGINAL 58 ACRE TRACT  
O.R. 570, PG. 563, TRACT II

**LEGEND**

- 5/8 INCH IRON ROD SET
- ⊙ MAG NAIL SET
- ⊠ STONE FOUND IN MOMUMENT BOX
- ⊡ 5/8 INCH IRON ROD IN MONUMENT BOX



SURVEYED BY:  
*[Signature]*  
JEFFREY I. LEE  
PROFESSIONAL SURVEYER 6359  
DECEMBER 22, 2003

ORIGINAL STAMP IN GREEN

**PLEASANT TOWNSHIP**  
**MIAMI TOWNSHIP**

2 WORKING DAYS  
**BEFORE YOU DIG**  
CALL TOLL FREE **800-362-2764**  
OHIO UTILITIES PROTECTION SERVICE.

INDEXED ON MAP  
9467 IP

COPYRIGHT 2003 BY:  
**LEE SURVEYING & MAPPING CO., INC.**  
117 North Madriver Street  
BELLEFONTAINE, OHIO 43311  
(937) 593-7335  
D411 L3732 L3732