



# Lee Surveying and Mapping Co., Inc.



Farm Surveys • Lot Surveys • Topography • Subdivisions • Construction Layout

117 North Madriver Street  
Bellefontaine, Ohio 43311

(513) 593-7335  
FAX (513) 593-7444

## JAMES K. AND BEATRICE A. SLAVEN 5.000 ACRES

Lying in Section 15, Town 2, Range 14, Pleasant Township, Logan County, Ohio.

Being out of the James K. Slaven and Beatrice A. Slaven original 15.42 acre tract as deeded and described in Volume 331, Pg. 97 of the Logan County Records of Deeds and being more particularly described as follows:

Beginning at a 1/2 inch iron bar found at the intersection of center-lines of County Highway 21 and County Highway 24 (southbound).

THENCE, with the center-line of County Highway 21 (60 feet wide), S 88°-30'-00" W, a distance of 196.77 feet to a 3/4 inch iron bar found at the TRUE POINT OF BEGINNING.

THENCE, with the center-line of County Highway 21, S 88°-30'-00" W, a distance of 452.67 feet to a railroad spike set.

THENCE, N 0°-32'-35" W, a distance of 506.32 feet to a 5/8 inch iron rod set.

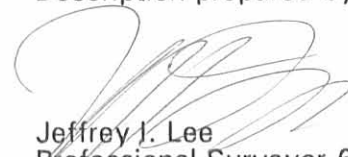
THENCE, with the south line of the Catherine Krisher 77.07 acre tract (Vol. 333, Pg. 809), S 85°-09'-28" E, a distance of 454.62 feet to a 5/8 inch iron rod set.

THENCE, with the west line of the Stephen A. Douglas 4.5 acre tract (Vol. 386, Pg 187), S 0°-32'-35" E, a distance of 456.10 feet to the point of beginning.

Containing 5.000 acres of which 0.312 acre is within the highway right-of-way.

The basis for bearings is the center-line of County Highway 21 being S 88°-30'-00" W, and all other bearings are from angles and distances measured in a field survey by Lee Surveying and Mapping Co., Inc. on July 23, 1996.

Description prepared by:

  
Jeffrey J. Lee  
Professional Surveyor 6359  
July 31, 1996



L 2428

ORIGINAL STAMP IN GREEN

INDEXED ON MAP  
9089 1D

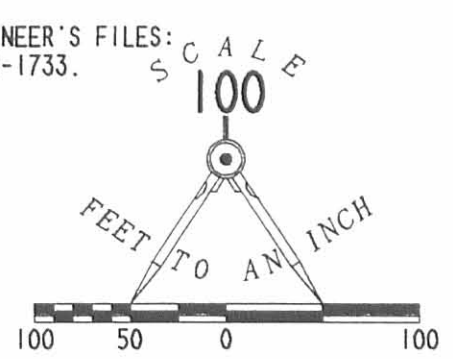
JAMES K. AND BEATRICE A. SLAVEN  
ORIGINAL 15.42 ACRES  
VOL 331, PG. 97

**5.000 ACRES**  
OF WHICH 0.312 ACRE IS WITHIN  
HIGHWAY RIGHT-OF-WAY

CATHERINE KRISHER  
77.07 ACRES  
VOL. 333. PG. 809

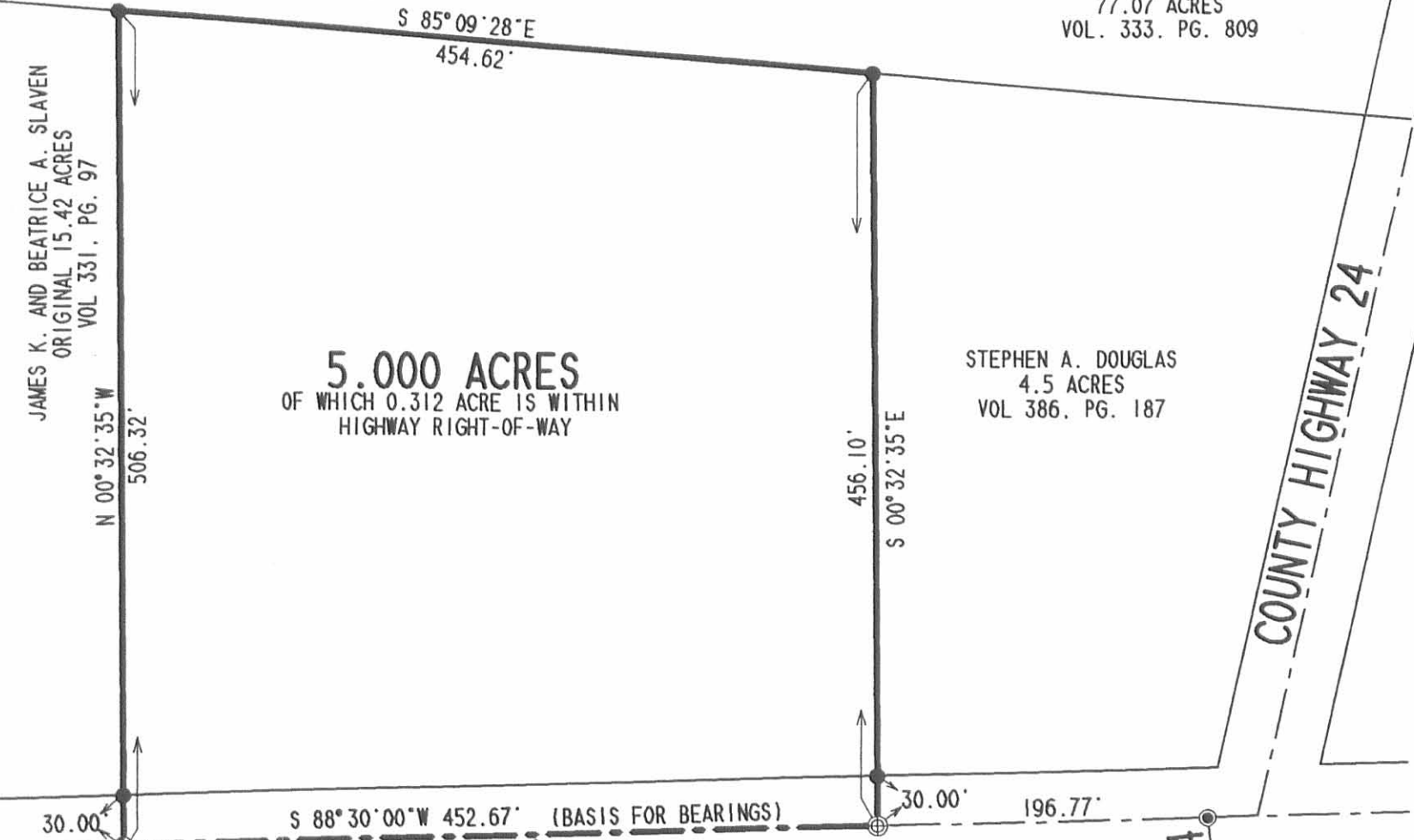
STEPHEN A. DOUGLAS  
4.5 ACRES  
VOL 386. PG. 187

REFERENCES  
LOGAN COUNTY ENGINEER'S FILES:  
R-1319, R-1521, R-1733,  
R-3773, & R-5781



2 WORKING DAYS  
**BEFORE YOU DIG**  
CALL TOLL FREE **800-362-2764**  
OHIO UTILITIES PROTECTION SERVICE.

- LEGEND
- 5/8" IRON ROD SET
  - ⊕ RAILROAD SPIKE SET
  - ⊕ 3/4" IRON BAR FOUND
  - ⊕ 1/2" IRON BAR FOUND



COUNTY HIGHWAY 21 (60')

COUNTY HIGHWAY 24

COUNTY HIGHWAY 24

BOUNDARY SURVEY OF 5.000 ACRES OUT OF THE  
JAMES K. AND BEATRICE A. SLAVEN  
ORIGINAL 15.42 ACRE TRACT  
VOLUME 331, PAGE 97, TRACT 11  
SECTION 15, TOWN 2, RANGE 14  
PLEASANT TOWNSHIP  
LOGAN COUNTY, OHIO

INDEXED ON MAP  
9089 1P



SURVEYED BY:  
*[Signature]*  
JEFFREY I. LEE  
PROFESSIONAL SURVEYOR 6359  
JULY 23, 1996

COPYRIGHT 1996 BY:  
LEE SURVEYING & MAPPING CO., INC.  
117 North Madriver Street  
BELLEFONTAINE, OHIO 43311  
(513) 593-7335

ORIGINAL STAMP IN GREEN

D 285 JSLAVEN

L-2428-4

5-30-14

# Lee Surveying and Mapping Co., Inc.



Land Surveys • Topography • Subdivisions • Construction Layout

117 N. Madriver St.  
Bellefontaine OH 43311



Phone: (937) 593-7335  
Fax: (937) 593-7444  
surveys@lsminc.us

## SLAVEN 71.082 ACRES

Lying in Section 15, Town 2, Range 14, Pleasant Township, Logan County, Ohio.

Being all of the Kenneth L. Slaven and Cindy Kay Slaven 65.5 acre tract and 10.42 acre tract as deeded and described in Official Record 705, Page 217, Tract I and Tract II of the Logan County records of Deeds and being more particularly described as follows:

Beginning on a MAG nail set on the north intersection of the centerlines of County Highway 24 and County Highway 21.

THENCE, with the westerly lines of the Barbara Jean Ingram and Tina Louise Rose 58.52 acre tract (O.R. 395, Pg. 736, Tract I), the following two courses:

S 48°-31'-47"W, a distance of 1464.05 feet to a 5/8 inch iron rod set at base of a wood corner post found, passing a MAG nail set on the south intersection of the centerlines of County Highway 24 and County Highway 21 (Station 138+97, Logan County Engineer's Field Book 601, Page 17) at 31.00 feet and a 5/8 inch iron rod set at 65.60 feet.

S 38°-41'-15"W, a distance of 1169.84 feet to a 24" tree found on the north bank of the Great Miami River, referenced by a 5/8 inch iron rod set bearing S 20°-38'-34"E, a distance of 0.93 feet.

THENCE, with the north and east bank of the Great Miami River, the following 12 courses:

N 67°-59'-32"W, a distance of 202.37 feet to a 5/8 inch iron rod set.

N 81°-57'-22"W, a distance of 201.84 feet to a 5/8 inch iron rod set.

S 74°-23'-56"W, a distance of 231.80 feet to a 5/8 inch iron rod set.

S 70°-37'-06"W, a distance of 286.17 feet to a 5/8 inch iron rod set.

N 71°-28'-04"W, a distance of 82.29 feet to a 5/8 inch iron rod set.

N 09°-32'-39"W, a distance of 109.05 feet to a 5/8 inch iron rod set.

N 40°-02'-09"E, a distance of 1096.57 feet to a 5/8 inch iron rod set.

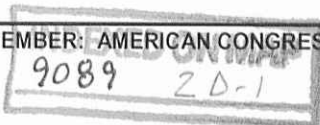
N 20°-55'-44"E, a distance of 411.31 feet to a 5/8 inch iron rod set.

N 13°-31'-30"E, a distance of 626.44 feet to a MAG nail set on the centerline of County Highway 21 (60 feet wide), passing a 5/8 inch iron rod set at 596.48 feet.

N 10°-16'-42"E, a distance of 316.74 feet to a 5/8 inch iron rod set, passing a 5/8 inch iron rod set at 30.09 feet.

N 04°-23'-36"W, a distance of 151.15 feet to a 5/8 inch iron rod set.

N 16°-37'-38"E, a distance of 676.35 feet to a 5/8 inch iron rod set.



# Lee Surveying and Mapping Co., Inc.

Land Surveys • Topography • Subdivisions • Construction Layout

117 N. Madriver St.  
Bellefontaine OH 43311



Phone: (937) 593-7335  
Fax: (937) 593-7444  
surveys@lsminc.us

THENCE, with a south line of the Gregory D. Krisher 70.832 acre tract (O.R. 701, Pg. 327), S 83°-56'-17"E, a distance of 448.14 feet to a 5/8 inch iron rod set.

THENCE, with the west lines of the Moores Cemetery (Vol. 71, Pg. 509) and the Board of Township Trustees of Pleasant Township 2 acre tract (Vol. 115, Pg. 441), S 06°-32'-06"W, a distance of 566.02 feet to a 5/8 inch iron rod set.

THENCE, with the south line of the said 2 acre tract, S 85°-09'-29"E, a distance of 67.32 feet to a 5/8 inch iron rod set.

THENCE, with the west line of the Board of Township Trustees of Pleasant Township 25 feet road (Vol. 115, Pg. 441), S 00°-25'-32"E, a distance of 554.91 feet to a MAG nail set on the center-line of County Highway 21, passing a 5/8 inch iron rod set at 524.92 feet.

THENCE, with the center-line of County Highway 21, N 88°-30'-02"E, a distance of 25.00 feet to a MAG nail set.

THENCE, with the east line of the said 25 feet road, N 00°-25'-32"W, a distance of 552.14 feet to a 5/8 inch iron rod set, passing a 5/8 inch iron rod set at 30.00 feet.

THENCE, with a south line of the aforesaid 2 acre tract and 70.832 acre tract, S 85°-09'-29"E, a distance of 414.60 feet to a 5/8 inch iron rod set.

THENCE, with the west line of the Ronzle L. Boggs 5.000 acre tract (O.R. 1017, Pg. 653), S 00°-32'-35"E, a distance of 506.32 feet to a railroad spike found on the center-line of County Highway 21, passing a 5/8 inch iron rod found at 476.36 feet.

THENCE, with the center-line of County Highway 21, N 88°-30'-02"E, a distance of 676.75 feet to the point of beginning, passing a 3/4 inch iron rod found at 452.66 feet and a 1/2 inch square iron bar found (Station 139+17, County Highway 24, Logan County Engineer's Field Book 516, Page 78 and Station 0+00, County Highway 21, Logan County Engineer's Field Book 572, Page 8) at 649.44 feet.

Containing 71.082 acres, of which 2.004 acres are within the highway rights-of way.

Property is subject to any and all previous easements and rights-of-way of record.

The basis for bearings is the center-line of County Highway 21, between Station 13+76.6 and Station 0+00, being N 83°-30'-02"E, and all other bearings are from angles and distances measured in a field survey by Lee Surveying and Mapping Co., Inc. on May 19, 2014.



Description prepared by:

*William K. Bruce*

William K. Bruce  
Professional Surveyor 7437  
May 21, 2014

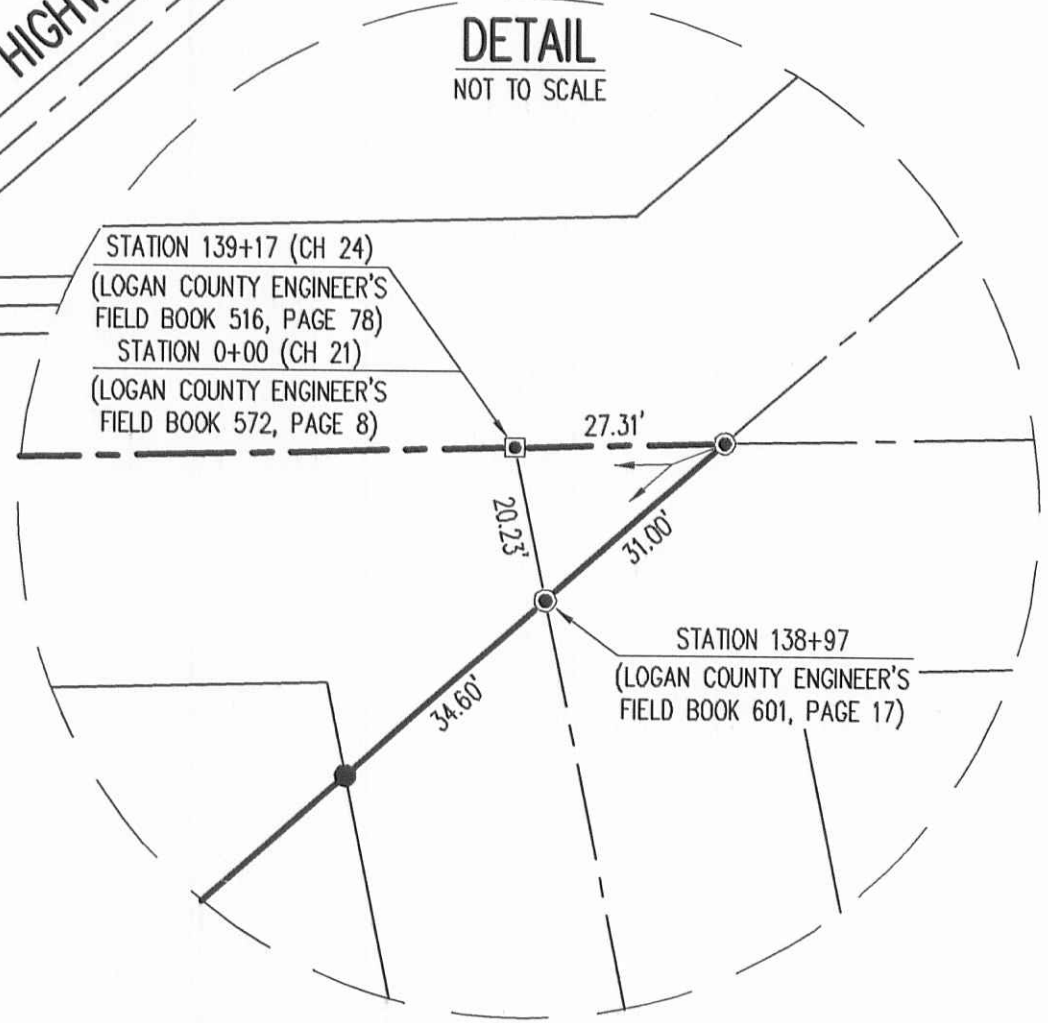
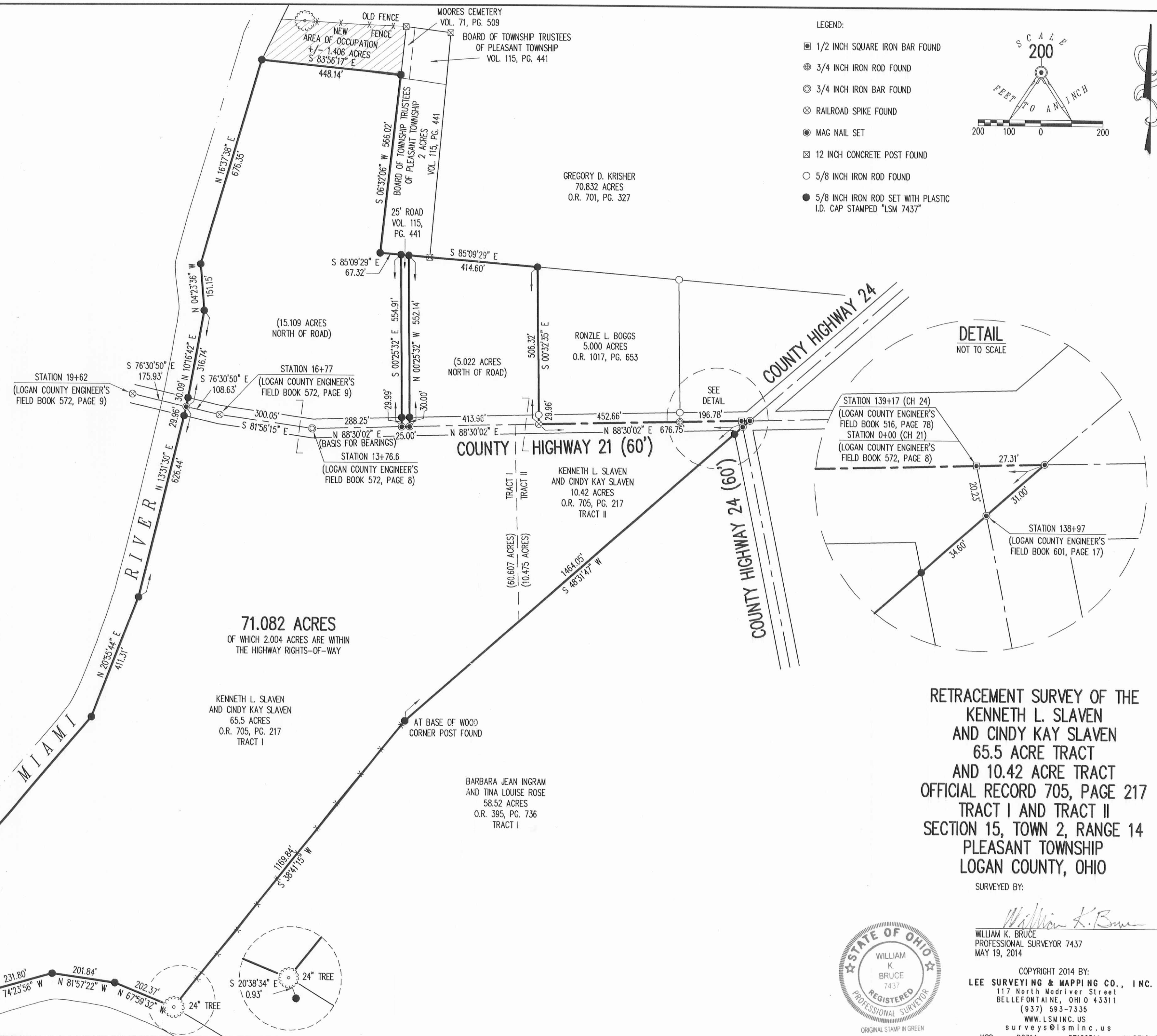
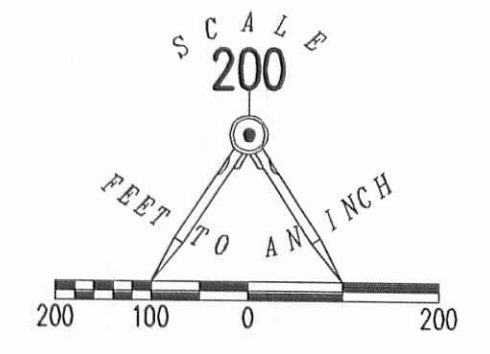
57120314

ORIGINAL STAMP IN GREEN



2 WORKING DAYS  
**BEFORE YOU DIG**  
 CALL TOLL FREE 800-362-2764  
 OHIO UTILITIES PROTECTION SERVICE

- LEGEND:
- 1/2 INCH SQUARE IRON BAR FOUND
  - ⊕ 3/4 INCH IRON ROD FOUND
  - ⊙ 3/4 INCH IRON BAR FOUND
  - ⊗ RAILROAD SPIKE FOUND
  - MAG NAIL SET
  - ⊠ 12 INCH CONCRETE POST FOUND
  - 5/8 INCH IRON ROD FOUND
  - 5/8 INCH IRON ROD SET WITH PLASTIC I.D. CAP STAMPED "LSM 7437"



RETRACEMENT SURVEY OF THE  
 KENNETH L. SLAVEN  
 AND CINDY KAY SLAVEN  
 65.5 ACRE TRACT  
 AND 10.42 ACRE TRACT  
 OFFICIAL RECORD 705, PAGE 217  
 TRACT I AND TRACT II  
 SECTION 15, TOWN 2, RANGE 14  
 PLEASANT TOWNSHIP  
 LOGAN COUNTY, OHIO

SURVEYED BY:  
*William K. Bruce*  
 WILLIAM K. BRUCE  
 PROFESSIONAL SURVEYOR 7437  
 MAY 19, 2014



COPYRIGHT 2014 BY:  
 LEE SURVEYING & MAPPING CO., INC.  
 117 North Madriver Street  
 BELLEFONTAINE, OHIO 43311  
 (937) 593-7335  
 WWW.LSMINC.US  
 surveys@lsminc.us  
 KSS D0314 57120314 L-5712-2

12-1-14

# Lee Surveying and Mapping Co., Inc.



Land Surveys • Topography • Subdivisions • Construction Layout

117 N. Madriver St.  
Bellefontaine OH 43311



Phone: (937) 593-7335  
Fax: (937) 593-7444  
surveys@lsminc.us

## KRISHER 1.413 ACRES

Lying in Section 15, Town 2 Range 14, Pleasant Township, Logan County Ohio.

Being out of the Gregory D. Krisher 70.832 acre tract as deeded and described in Official Record 701, Page 327 of the Logan County Records of Deeds and being more particularly described as follows:

Commencing at a railroad spike found on the center-line of County Highway 21 (60 feet wide) at Station 16+77 (per Logan County Engineer's Field Book 572, Page 9).

THENCE, with the center-line of County Highway 21, N 76°-30'-50"W, a distance of 108.63 feet to a MAG nail found.

THENCE, with the west line of the Kenneth L. Slaven and Cindy Kay Slaven 65.5 acre tract (O.R. 705, Pg. 217, Tract I), and the east line of the Great Miami River the following three courses:

N 10°-16'-42"E, a distance of 316.74 feet to a 5/8 inch iron rod found, passing a 5/8 inch iron rod found at 30.09 feet.

N 04°-23'-36"W, a distance of 151.15 feet to a 5/8 inch iron rod found.

N 16°-37'-38"E, a distance of 676.35 feet to a 5/8 inch iron rod found at the TRUE POINT OF BEGINNING.

THENCE, with the east line of the Great Miami River, N 22°-02'-15"E, a distance of 137.74 feet to a 5/8 inch iron rod set.

THENCE, S 87°-08'-17"E, a distance of 411.19 feet to a 12 inch concrete post found.

THENCE, with the west line of the Moores Cemetery (Vol. 71, Pg. 509), S 06°-10'-43"W, a distance of 155.38 feet to a 5/8 inch iron rod found.

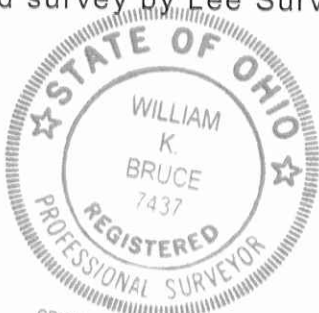
THENCE, with the north line of the aforesaid 65.5 acre tract, N 83°-56'-17"W, a distance of 448.14 feet to the point of beginning.

Containing 1.413 acres.

This parcel is to be attached to an adjoining tract of land and is not to be used as a separate and independent parcel.

Property is subject to any and all previous easements and rights-of-way of record.

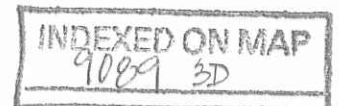
The basis for bearings is center-line of County Highway 21, being S 76°-30'-50"E, and all other bearings are from angles and distances measured in a field survey by Lee Surveying and Mapping Co., Inc. on November 17, 2014.



Description prepared by:

*William K. Bruce*

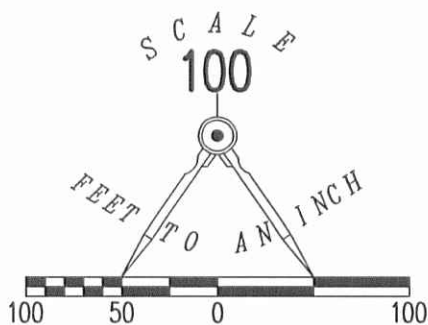
William K. Bruce  
Professional Surveyor 7437  
November 17, 2014



L-57121014

12-1-14

**APPROVED**



LEGEND

- 5/8 INCH IRON ROD SET WITH PLASTIC I.D. CAP STAMPED "LSM7437"
- 5/8 INCH IRON ROD FOUND
- ⊙ MAG NAIL FOUND
- ⊠ 12 INCH CONCRETE POST FOUND
- ⊗ RAILROAD SPIKE FOUND

GREGORY D. KRISHER  
70.832 ACRES  
O.R. 701, PG. 327

NOTE:  
THIS PARCEL IS TO BE ATTACHED TO AN ADJOINING TRACT OF LAND AND IS NOT TO BE USED AS A SEPARATE AND INDEPENDENT PARCEL.

**1.413 ACRES**

MOORES CEMETERY  
VOL. 71, PG. 509

BOARD OF TOWNSHIP TRUSTEES  
OF PLEASANT TOWNSHIP  
2 ACRES  
VOL. 115, PG. 441

KENNETH L. SLAVEN  
AND CINDY KAY SLAVEN  
65.5 ACRES  
O.R. 705, PG. 217  
TRACT I

GREAT MIAMI RIVER

A SURVEY OF A 1.413 ACRE TRACT OUT OF THE  
GREGORY D. KRISHER  
70.832 ACRE TRACT  
OFFICIAL RECORD 701, PAGE 327  
SECTION 15, TOWN 2 RANGE 14  
PLEASANT TOWNSHIP  
LOGAN COUNTY, OHIO

SURVEYED BY:

*William K. Bruce*  
WILLIAM K. BRUCE  
PROFESSIONAL SURVEYOR 7437  
NOVEMBER 17, 2014

COPYRIGHT 2014 BY:  
**LEE SURVEYING & MAPPING CO., INC.**  
117 North Madriver Street  
BELLEFONTAINE, OHIO 43311  
(937) 593-7335  
WWW.LSMINC.US  
surveys@lsminc.us



STATION 19+62  
(LOGAN COUNTY ENGINEER'S  
FIELD BOOK 572, PAGE 9)

STATION 16+77  
(LOGAN COUNTY ENGINEER'S  
FIELD BOOK 572, PAGE 9)

COUNTY HIGHWAY 21 (60')

2 WORKING DAYS  
**BEFORE YOU DIG**  
CALL TOLL FREE **800-362-2764**  
OHIO UTILITIES PROTECTION SERVICE.

INDEXED ON MAP  
9089 3P

ADW D1014 57121014 L-5712-3

17-14-16

APPROVED

Easement for Road Maintenance Purposes

Situated in Section 15, Town 2, Range 14 of the Between the Miami Rivers Survey, Pleasant Township, Logan County, Ohio. Said easement for road maintenance purposes being part of Kenneth L. Slaven etux's 65.5 acre tract 1 (O.R.V. 705, pg. 217) and is more particularly described as follows:

Beginning for reference at a 3/4 inch square iron bar (harrow tooth) found on the centerline of Logan County Road No. 21. Said iron bar found being a P.I. at C.R. 21 centerline station 13+76.51 (shown as station 13+76.6 in Logan County Engineers Field Book # 572, pg. 8).

Thence N. 4° - 50' - 32" E., 30.11 feet to a point on the North right of way line of C.R. 21. Said point being the true point of beginning for this easement description.

Thence with the North right of way line of C.R. 21 the following two courses:

- 1.) N. 80° - 21' - 31" W., 296.23 feet to a point.
- 2.) N. 75° - 00' - 21" W., 108.89 feet to a point on the East bank of the Great Miami River.

Thence with the East bank of the Great Miami River, N. 11° - 50' - 39" E., 104.80 feet to a point.

Thence through aforesaid Slaven etux's 65.5 acre tract, the following two courses:

- 1.) S. 52° - 28' - 42" E., 111.53 feet to a point.
- 2.) S. 68° - 37' - 32" E., 308.48 feet to the point of beginning.

The above described easement for road maintenance purposes contains 0.412 acre more or less.

Bearings are based on the grid of the North Zone of the Ohio State Plane Coordinate System.

This easement description was prepared from an actual field survey performed by the Logan County Engineers Office in March 2016.



*Curtis D. Dill*

Curtis D. Dill  
Deputy Surveyor  
Logan County Engineers Office  
Registered Surveyor No. 7310

INDEXED ON MAP  
9089 4D



7-14-16

P.T. 24+03.08 back  
24+77.68 ahead  
N.253197.95854  
E.1567229.38742

End Acquisition  
30.00' Right/24+77.68  
Point of Beginning

APPROVED

# RIGHT OF WAY PLAN BRIDGE 21-1.00

PLEASANT TOWNSHIP  
LOGAN COUNTY, OHIO  
MARCH 2016

Section 1, Town 1, Range 8  
Congress Lands West of the Miami River Survey

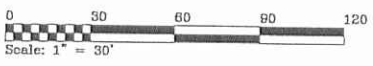
Gross Take = 1.124 Acres  
P.R.O. = 0.394 Acre  
Net Take = 0.730 Acre

ELIZABETH WAGLER ETAL  
58.32 acre, Tract II  
(O.R.V. 1209, pg. 677)  
Parcel #: 34-086-00-00-046-000

Section 15, Town 2, Range 14  
Between the Miami River Survey

Gross Take = 0.692  
P.R.O. = 0.280 Acre  
Net Take = 0.412 Acre

Kenneth L. Slaven etux  
65.5 acre, Tract I  
(O.R.V. 705, pg. 217)  
Parcel #: 34-086-00-00-048-000



Bearings are based on the grid of the North Zone of the Ohio State Plane Coordinate System.

2SH  
0.730 Acres  
(31792.430 Sq. Feet)

1SH  
0.412 Acres  
(17929.715 Sq. Feet)

Proposed P.I.  
19+41.75  
(24.73' Lt. C/L Sta. 19+40.60)  
N.252699.93019  
E.1567459.60247

P.I.  
16+76.66  
(16+77 - F.B.K. # 572, pg. 9)  
Found 3/4" Square Iron Bar (Harrow Tooth)  
5\*21'10"Rt

P.C.  
13+93.09  
N.252608.03876  
E.1568000.51574

Begin Acquisition  
30.00' Right/13+73.99

Point of Beginning Existing R/W Line  
N 04°50'32" E  
30.11'  
N 89°57'25" W  
P.I. 13+76.51  
(13+76.6 - F.B.K. # 572, pg. 8)  
Found 3/4" Square Iron Bar (Harrow Tooth)  
9\*35'54"Rt

### PROPOSED CURVE DATA

CURVE	DELTA ANGLE	RADIUS	TANGENT	ARC LENGTH	DEGREE OF CURVE	CHORD LENGTH	CHORD BEARING
C1	55°32'59"	1041.74'	548.66'	1009.99'	5°30'00"	970.90'	S 52°35'01" E
P.C. 13+93.09		P.I. 19+41.75		P.T. 24+03.08			

### Monument Table

Centerline C.R. 21		Project Coordinates		Description
Station	Offset	North	East	
0+00	C/L	252604.22550	1569393.36960	FD 3/4" Square Iron Bar(Harrow Tooth)
13+76.51	C/L	252605.26189	1568016.86164	FD 3/4" Square Iron Bar(Harrow Tooth)
16+76.66	C/L	252655.53197	1567720.94989	FD 3/4" Square Iron Bar(Harrow Tooth)
19+61.20	C/L	252729.14887	1567446.09605	FD 3/4" Square Iron Bar(Harrow Tooth)
59+56.57	C/L	256355.79138	1565769.67001	Found 5/8" Iron Bar

This plat represents an actual field survey performed by the Logan County Engineer's Office in March 2016. Horizontal Coordinates shown are based on the North Zone of the Ohio State Plane Coordinate System NAD83(2011). No scale factor or combined factor has been applied.

*Curtis D. Dill*  
Curtis D. Dill  
Deputy Surveyor  
Logan County Engineer's Office  
Registered Surveyor No. 7310

INDEXED ON MAP  
9089 4P-1

