

REC'D 3-20-95 JML OK ✓



Lee Surveying and Mapping Co.



Farm Surveys • Lot Surveys • Topography • Subdivisions • Construction Layout

143 EAST COLUMBUS AVENUE
BELLEFONTAINE, OHIO 43311

(513) 593-7335

JEFFREY I. LEE, P.S.

WIFORD 4.032 ACRES

Lying in Section 34, Town 2, Range 8, Pleasant Township, Logan County, Ohio.

Being out of the Ladonna Wiford 160 acre tract as deeded and described in Volume 390, Page 317 of the Logan County Records of Deeds and being more particularly described as follows:

Beginning at a stone in a monument box found at the southeast corner of Section 34. The said stone is also at the intersection of center-lines of Township Road 35 and Township Road 78.

THENCE, with the south line of Section 34 and the center-line of Township Road 78 (40 feet wide), S 90°-00'-00" W, a distance of 501.08 feet to a railroad spike set at the TRUE POINT OF BEGINNING.

THENCE, with the south line of Section 34 and the center-line of Township Road 78, S 90°-00'-00" W, a distance of 280.39 feet to a railroad spike set.

THENCE, N 00°-00'-00" E, a distance of 627.00 feet to a 5/8 inch iron rod set.

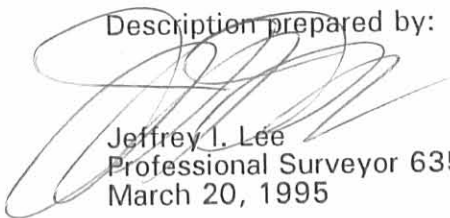
THENCE, N 90°-00'-00" E, a distance of 279.90 feet to a 5/8 inch iron rod set.

THENCE, S 00°-02'-41" E, a distance of 627.00 feet to the point of beginning.

Containing 4.032 acre of which 0.129 acre is within the highway right-of-way.

The basis for bearings is based upon the south line of Section 34 being assumed S 90°-00'-00" W, and all other bearings are from angles and distances measured in a field survey by Lee Surveying and Mapping Company on March 14, 1995.

Description prepared by:


Jeffrey I. Lee
Professional Surveyor 6359
March 20, 1995



L 2269

ORIGINAL STAMP IN GREEN

INDEXED ON MAP
8995 ID

LADONNA WIFORD
160 ACRES
VOL. 390. PG. 317



CALL TOLL FREE 800-362-2764
OHIO UTILITIES PROTECTION SERVICE.

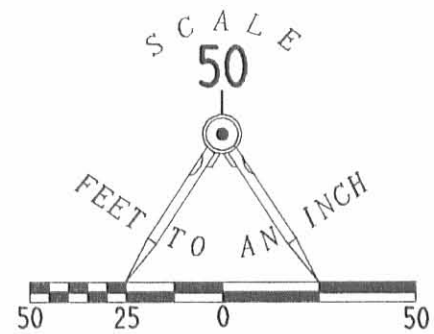
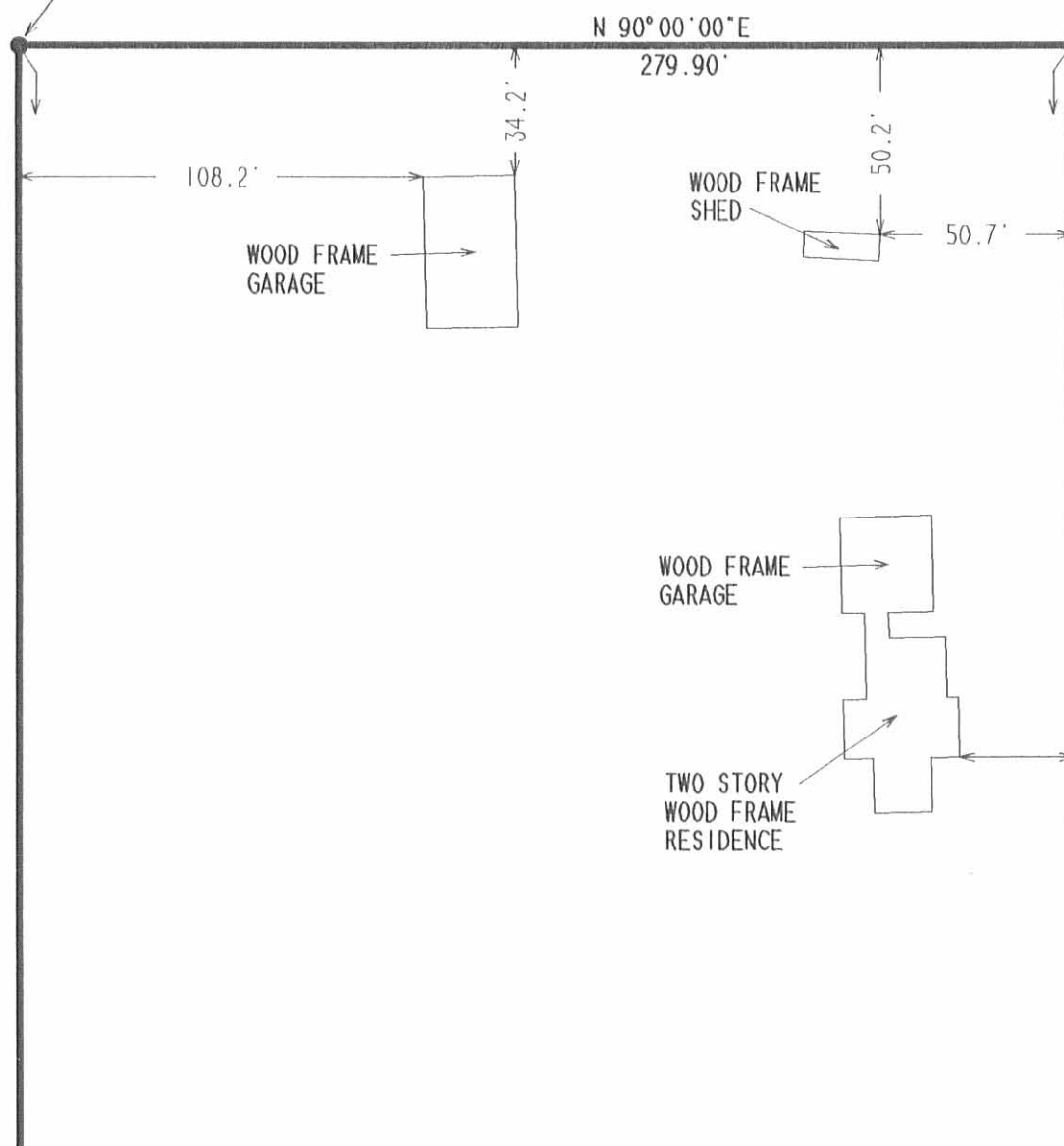
LADONNA WIFORD
160 ACRES
VOL. 390. PG. 317

LADONNA WIFORD
160 ACRES
VOL. 390. PG. 317

N 00°00'00"E
627.00'

S 00°02'41"E
627.00'

4.032 ACRES
(OF WHICH 0.129 ACRE IS WITHIN
THE HIGHWAY RIGHT-OF-WAY.)



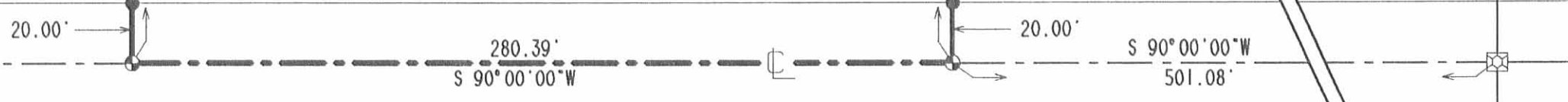
LEGEND

- ☒ STONE IN MONUMENT BOX FOUND
- ⊙ RAILROAD SPIKE SET
- 5/8" IRON ROD SET

REFERENCE

LOGAN COUNTY ENGINEER'S MAP ROOM
FIELD BOOK 559, PAGES 67 THRU 69.

TOWNSHIP ROAD 78 (40')



SECTION 34. TOWN 2. RANGE 8
SECTION 35. TOWN 2. RANGE 8

SURVEY OF 4.032 ACRES OUT OF
THE LADONNA WIFORD, 160 ACRES
VOLUME 390. PAGE 317
SECTION 34. TOWN 2. RANGE 8. M.R.S.
PLEASANT TOWNSHIP
LOGAN COUNTY, OHIO

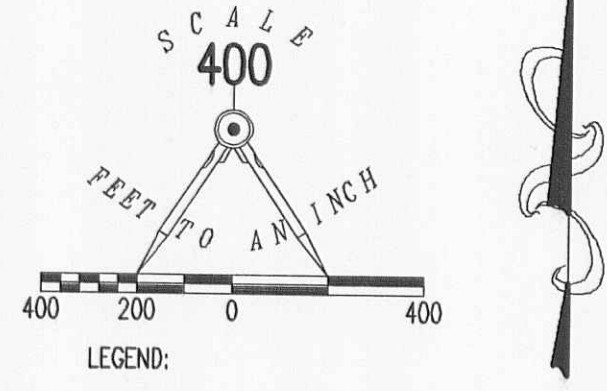
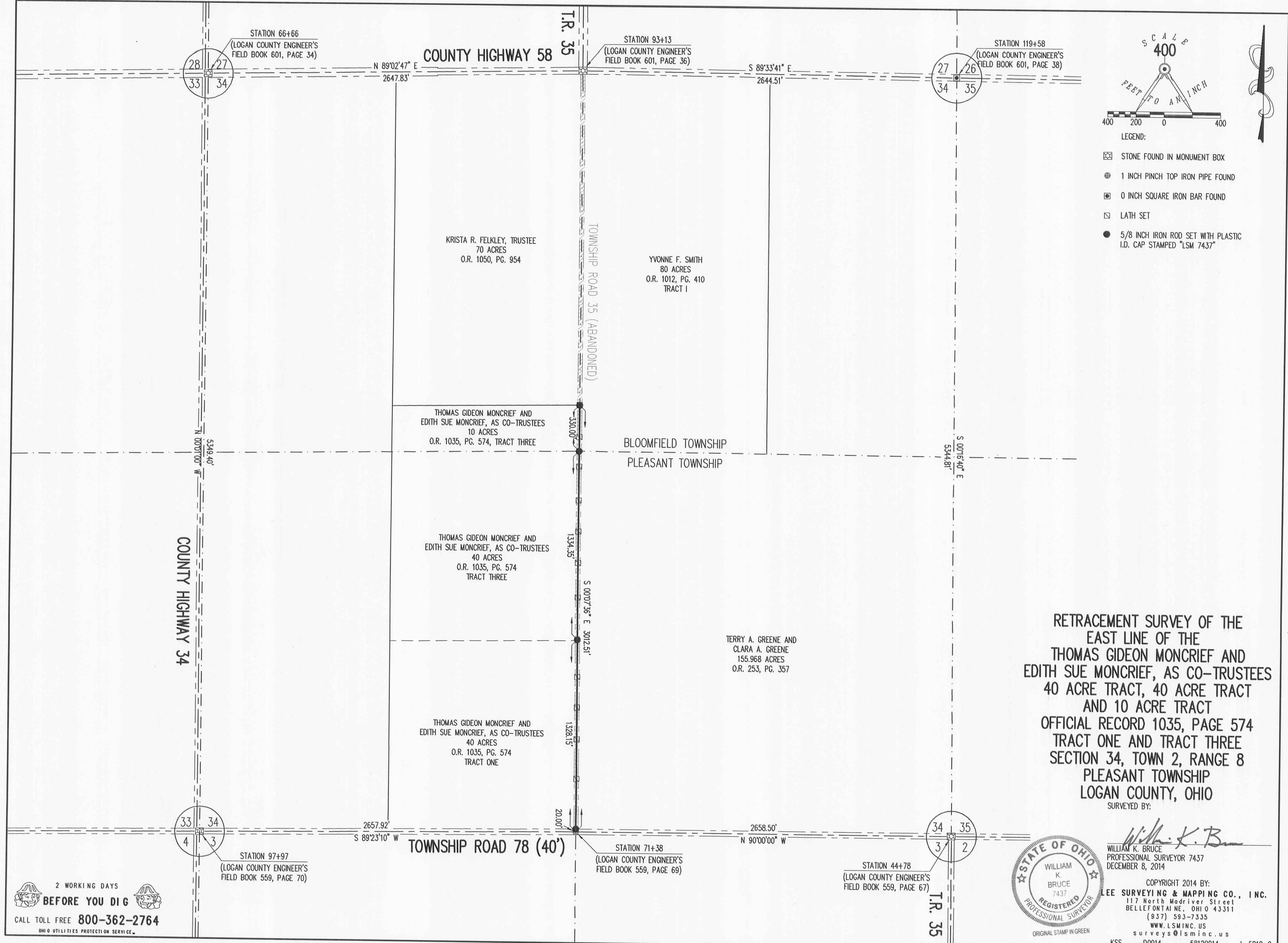
INDEXED ON MAP
8995 IP



SURVEYED BY:
[Signature]
JEFFREY I. LEE
PROFESSIONAL SURVEYOR 6359
MARCH 14, 1995

COPYRIGHT 1995 BY:
LEE SURVEYING & MAPPING CO.
143 East Columbus Avenue
BELLEFONTAINE, OHIO 43311
(513) 593-7335

TOWNSHIP ROAD 35
SEC. 3. T. 1. R. 8
SEC. 4. T. 1. R. 8



RETRACEMENT SURVEY OF THE
 EAST LINE OF THE
 THOMAS GIDEON MONCRIEF AND
 EDITH SUE MONCRIEF, AS CO-TRUSTEES
 40 ACRE TRACT, 40 ACRE TRACT
 AND 10 ACRE TRACT
 OFFICIAL RECORD 1035, PAGE 574
 TRACT ONE AND TRACT THREE
 SECTION 34, TOWN 2, RANGE 8
 PLEASANT TOWNSHIP
 LOGAN COUNTY, OHIO

SURVEYED BY:
William K. Bruce
 WILLIAM K. BRUCE
 PROFESSIONAL SURVEYOR 7437
 DECEMBER 8, 2014



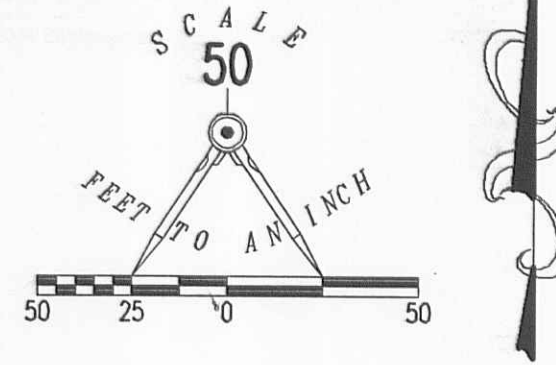
COPYRIGHT 2014 BY:
LEE SURVEYING & MAPPING CO., INC.
 117 North Madriver Street
 BELLEFONTAINE, OHIO 43311
 (937) 593-7335
 WWW.LSMINC.US
 surveys@lsminc.us
 KSS D0914 58120914 L-5812-2

2 WORKING DAYS
BEFORE YOU DIG
 CALL TOLL FREE 800-362-2764
 OHIO UTILITIES PROTECTION SERVICE

INDEXED ON MAP
 8945 2P

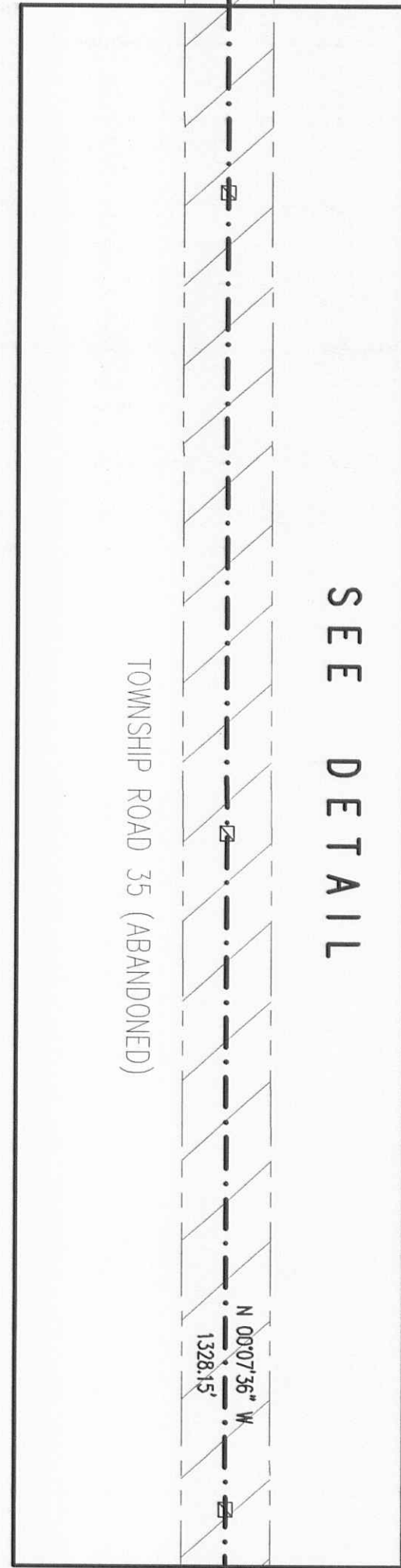
APPROVED

THOMAS GIDEON MONCRIEF AND
EDITH SUE MONCRIEF, AS CO-TRUSTEES
40 ACRES
O.R. 1035, PG. 574
TRACT THREE



LEGEND:

- 1 INCH PINCH TOP IRON PIPE FOUND
- LATH SET
- TREE STUMP
- 5/8 INCH IRON ROD SET WITH PLASTIC I.D. CAP STAMPED "LSM 7437"

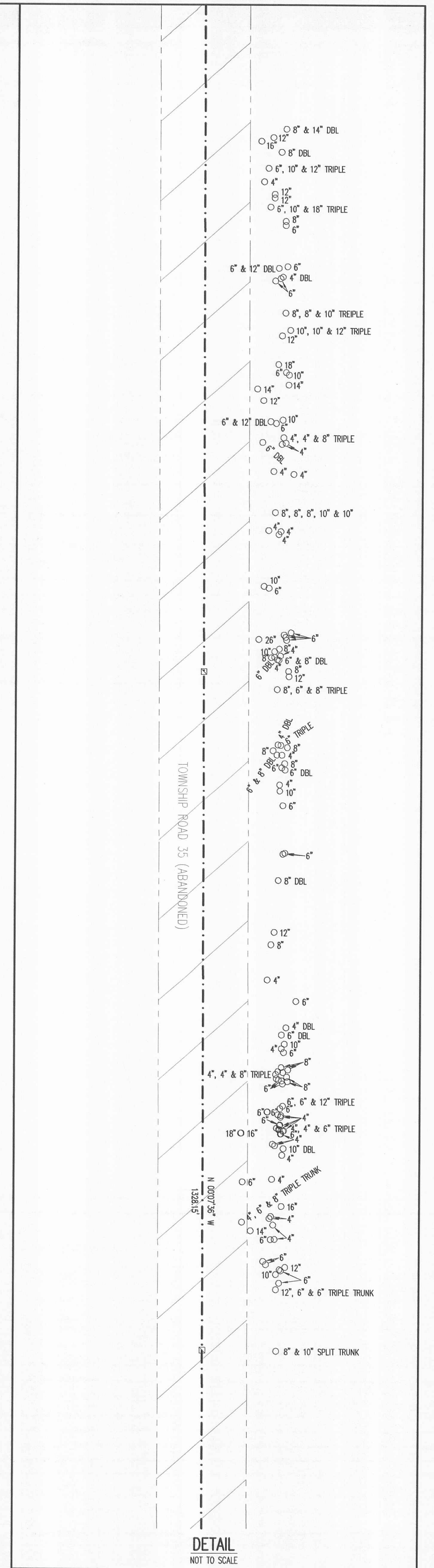


TOWNSHIP ROAD 35 (ABANDONED)

SEE
DETAIL

THOMAS GIDEON MONCRIEF AND
EDITH SUE MONCRIEF, AS CO-TRUSTEES
40 ACRES
O.R. 1035, PG. 574
TRACT ONE

TERRY A. GREENE AND
CLARA A. GREENE
155.968 ACRES
O.R. 253, PG. 357

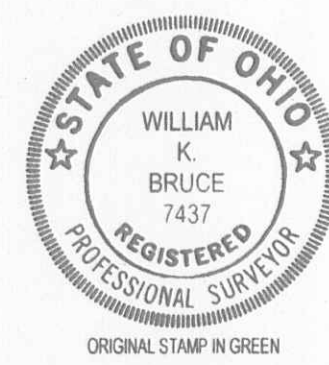


LOCATION OF TREE STUMPS ALONG
A PORTION OF THE WEST LINE OF THE
TERRY A. GREENE AND
CLARA A. GREENE
155.968 ACRE TRACT
OFFICIAL RECORD 253, PAGE 357
SECTION 34, TOWN 2, RANGE 8
PLEASANT TOWNSHIP
LOGAN COUNTY, OHIO

SURVEYED BY:

William K. Bruce
WILLIAM K. BRUCE
PROFESSIONAL SURVEYOR 7437
DECEMBER 2, 2014

COPYRIGHT 2014 BY:
LEE SURVEYING & MAPPING CO., INC.
117 North Madriver Street
Bellefontaine, OH 45311
(937) 593-7335
WWW.LSMINC.US
surveys@lsminc.us
KSS D1214 58120914 L-5812-1



TOWNSHIP ROAD 78 (40')

SECTION 34
SECTION 3

STATION 71+38
(LOGAN COUNTY ENGINEER'S
FIELD BOOK 559, PAGE 69)

2 WORKING DAYS
BEFORE YOU DIG
CALL TOLL FREE 800-362-2764
OHIO UTILITIES PROTECTION SERVICE

INDEXED ON MAP
8995 38