

N^o 408

293

(8426)

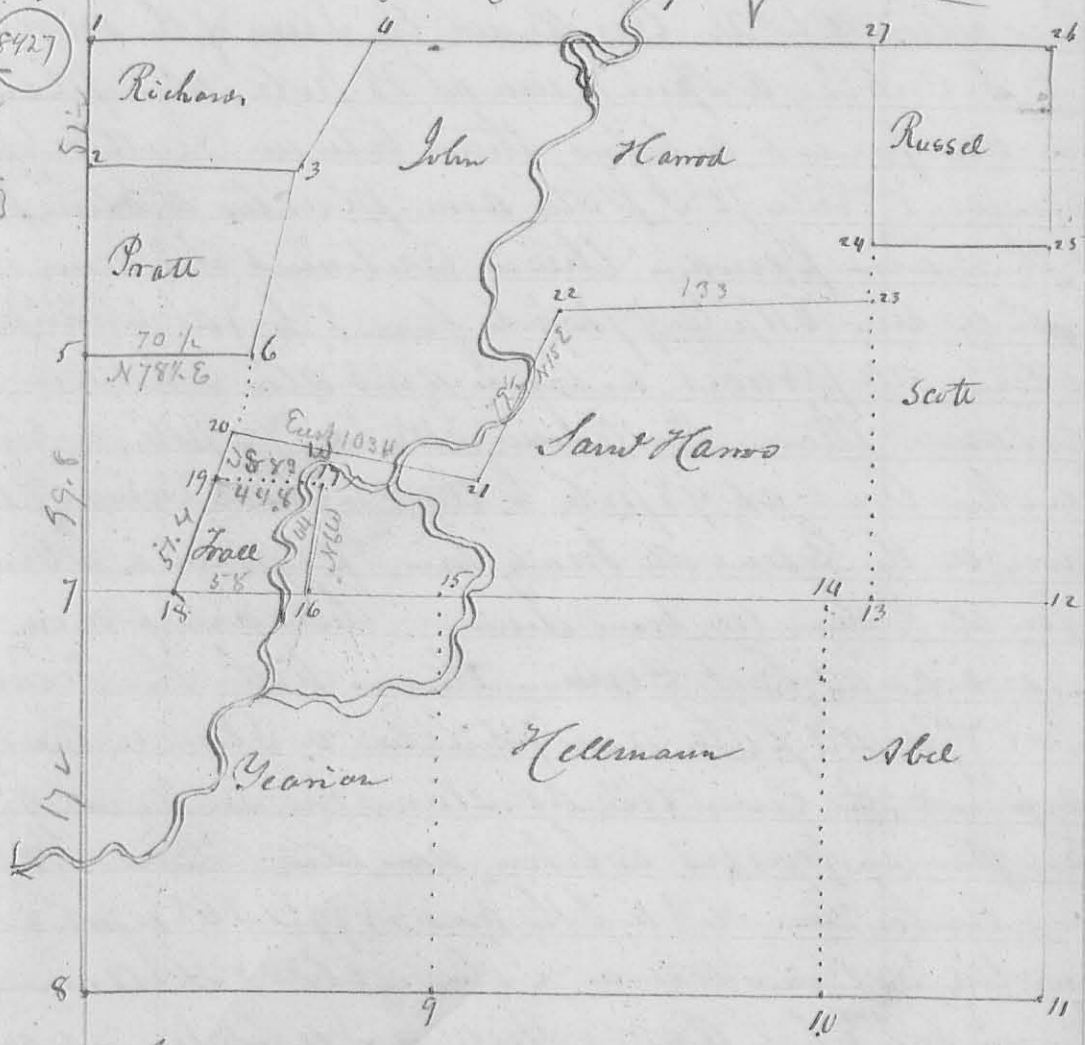
Surveyed March 27. 1838 for William Douglas and
 Jacob Keith part of the South West and South East quarter
 of 5972 R 14 m. r. s. as follows. Beginning at the Southeast
 Corner of the NW q. of said Section - then N 89° W 3 ch 78 links
 to a Hickory oru in diameter South 7 links, then S 13° W
 5 chain 94 links to a Stake - then S 86° E 8 chain 4 links
 to a stone in a prairie - then N 12° E 6 chain 56 links to a
 Stake - then N 89° W 3 chain 96 links to a Stake - then
 N 12° E 78 links to the beginning, which is North 9 links from
 a white oak stump about 8 feet high, the interior
 quarter Section Corner in said Section - Containing Acres
 Dan Hopkins T. S. L. C.

N 409

Military Survey N^o 10307

(8427)

52.5
 99.8
 92
 326.3



In pursuance of an act entitled "An Act to enable the
 holders of land within this State to perpetuate testi-
 mony relative to their land," Surveyed on March 28.
 & 29. 1838, and planted corners, in Military Survey N^o 10307
 are represented by the foregoing plat, the figure showing
 the points at which corners were planted. Beginning at