

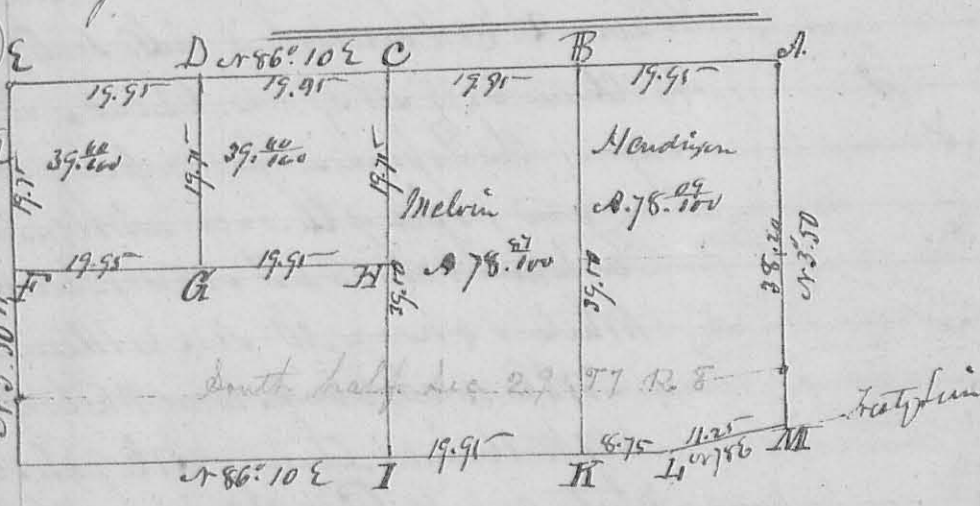
280
N^o 357
8397

Survey 1837
Surveyed for Tho. Mulkemon part of the S. E. Quarter of
S28. T3. R14M. N. as follows. Beginning at a stone in
the N. line of S31. Gr. S. Corner, thence North 3 ch 94 to a
stone, thence N 89° E 25. ch 94 to a stone, thence South
3 ch 94 to a stone, thence S 89° W 25 ch 94 to the beginning
Containing 10 acres.
D. Hopkins Sur. S. E. 0

N^o 358
8398

Surveyed June 19. 1837. for Wm. M. May. part of
Military Survey N^o 9905 as follows. Beginning at an Elm
and Sugar Corners easterly corner to Peter Stamaty thence
N 12° W 19 poles, ending a Road at 92 poles to the south
line of Survey N^o 9930. at a Hickory and Wild Cherry bush
thence with said line N 74° E 86 poles to a Sugar Hickory
Corner to Horner Patterson's Lease, thence S 12° E 140 poles, ending
a Road at 88 poles to a large Elm on the bank of a new
Corner to Saml. C. Hull, thence with the Meander of said
Creek N 27° W 16 poles, S 67° W 20 poles, S 9° E 13 poles, S 34° W 12 poles,
S 57° W 12 poles, S 15° W 11 poles, S 27° E 8 poles, S 70° W 11 poles, S 40° W 8 poles,
S 58° W 8 poles, and S 10° W 10 poles to the beginning Containing 81²/₁₀₀
Acres.
J. Ferguson. R. Patterson ch. D. Hopkins Sur. S. E. 0.

N^o 359
8399
Lewis & Clark
Reserve
Surveyed
July 26
1837



Corners. A. Gr. S. Corner between S28. 29
B. Ash 12 S. South 35. Ash. 6 S. N. 30 W 12
C. Ash 10. S. S30 W 36. Elm 15 S. N 15 E 13
D. Elm 15. N 14 E 26. Hickory 12. S 22 E 37
E. Quarter Section Corner between S29. 30.