

356 beginning containing 4 1/2 acres -

D. Hopkins to Jan 26

N^o 347

8390

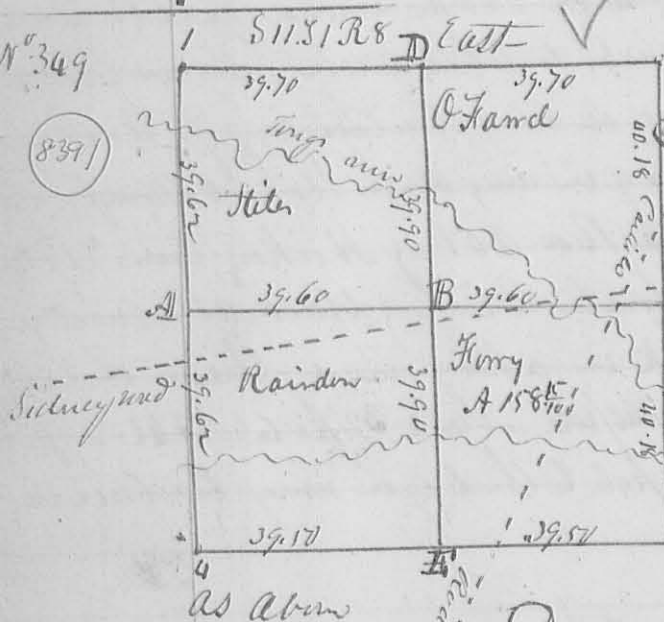
Surveyed Oct 27. 1836 for John Dickson part of M^r Quarter of 18 1/2 R 14 M R 1 as follows Beginning at N.E. Corner of said quarter a Cotton wood 15 L. D beam 188 W 78 links, then N 1/2 W 7 ch 50 links to a stake in a prong, then N 89° W 39 ch 80 links to a white Oak 8 Inches diameter S 43 W 12 L, then N 1/2 W 7 ch 62 links to a stake in a field, then S 89 1/2 E 39 ch. 80 links to the beginning containing 30 acres -

N^o 348

Surveyed Nov. 1. 1836 for John R. Marquis a part of the W. half of the S. E. q^r of 134 1/4 R 14 M R 1 as follows Beginning at the N. E. Corner of said half q^r at a stake at W. Corner to David look then West 3 ch 25 links to a stake in the center of the pig road, then with said road S 1/2 W 6 ch. 37 links to a stake, then S 89 1/2 E 25 ch. 25 links to a stake in said look West line, then with said line N 1/2 W 6 ch 37 links to the beginning containing 2 1/2 acres -

N^o 349

8391



the annexed plat represents the survey sub. division in 11 1/2 R 8 E made for the individuals whose names are marked on the plat on Nov. 8. 1836. the original corner N 5° 10' W - the present bearing of the sub. division line as follows ABC N 85 1/2 E. distance as marked on the lines of the plat - EBD N 6° W distance

Description of Corners &c

- 1, 2, 3, & the several section corners - for a more particular description see Note -
- A. Forked Becks 20 L D 1866 28 Links. E line 18 L D N 86 W 1/4 Link
 - B Hickory 30 L D N 59 W 6 Links. Same 18 L D S 36 E 56 Links. C. original
 - Corner Wh. O. 36 L D S 86 W 36 Links. Sugar (down) 24. N 63 E 32 Links
 - D Becks 20 L D N 53 W 14 L. Hickory 12 L D S 81 E 6 L original corner

E. Black Oak 6 1/2 P 1/2 W 10 Links Hickory 20 1/2 P 5/8 E 18 Links 357
for contents see the plat

David Ferry }
John Meane }
Wm Rainden } Ch
 } mens.

Dan Hopkins County Surveyor I.C.

N^o 350 Surveyed Nov. 9. 1836 for John Meane the E. att half of the
NW quarter of S10. T1R 8 E Beginning at the quarter section corner
on the North line of the section, one of the original corner trees, down
thence S 85 1/2 W 19 ch 87 Link to a Hickory 18 1/2 P NW 28 links, Gray Ash
30 1/2 P S 62 0 Link thence S 6 3/4 E 10 chains cupping several branches
several times to a Beech 22 1/2 P S 58 E 36 Links, Ash 12 1/2 P N 9 W
37 links - thence N 85 E 19 ch 87 links cupping several trees at 50 links
to a Red Oak 12 1/2 P with 23 L, Black Ash 3 1/2 P East 28 links
thence N 4 3/4 W 40 ch. to the beginning Containing 79 1/2^{acres} -

David Ferry }
Wm Rainden } ch.

Dan Hopkins Co. Sur. I.C.

N^o 351 Nov. 15. 1836. Surveyed for Land Jenkins part of Military Survey
N^o 9931 as follows Beginning at a Beech in the North line of said Survey
East side of a Mill race, thence S 16 1/2 W 18 1/2 poles to a stake, thence S 46 1/2
W 14 1/2 poles to a stake, thence S 8 1/2 E 5 poles to a Sugar S. W. Corner to the
Town of North Wood thence with the Western line thereof N 1/2 W 28 1/2
poles to the North line of said Survey - thence with said line S 78 W
15 1/2 poles to the beginning Containing Two acres (2 acres) -

John Bone }
Alvin Clark } ch mens

Dan Hopkins Co. Sur. I.C.

N^o 352 Surveyed Nov. 15. 1836 for Wm Leeds part of Military Survey
N^o 9954 as follows - Beginning at two Dogwoods N.W. Corner
to Land Surveyed by Joe W. Raper to said Leeds thence S 16 1/2 W
89 poles to a Stake plus a Beech of Large Dogwood, thence N 78 E
89 poles cupping Creek to a Red Oak, Elm & Ash, thence
N 12 W 180 poles cupping Miami at 114 poles to a Beech of Sugar
thence S 78 W 89 poles to the Beginning, Containing 100 acres -

Dan Hopkins Co. Sur. I.C.