

140  
Keith  
Moore  
& Dixon

March 21<sup>st</sup> 1832 ✓ Survey No. 176

140

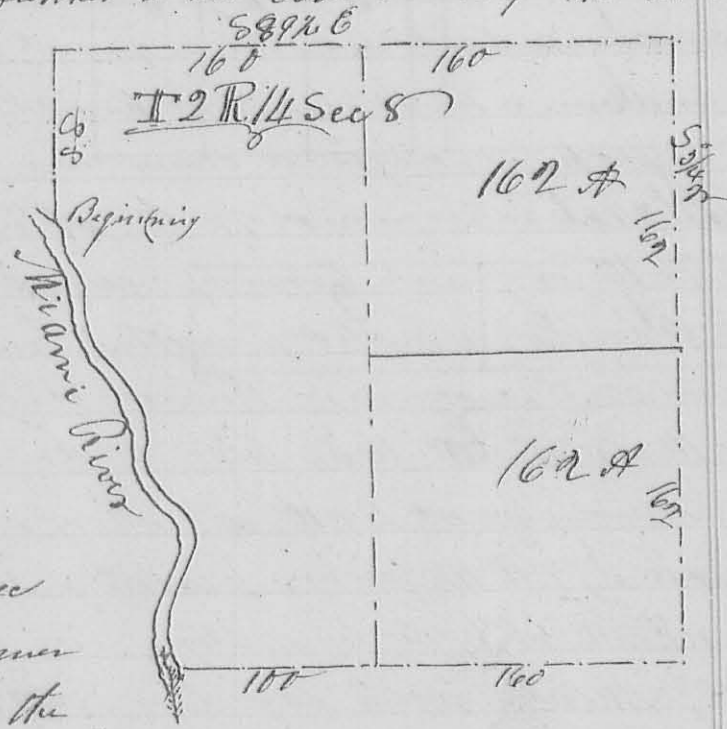
Surveyed and divided Sec. 8 T. 2. R. 14. W. 1. as here after  
exemplified for Jacob Keith, John Moore and John Dixon

176

8264

Beginning at a bot. oak on the east bank of the Miami River  
corner to sec. 14 thence north  $\frac{3}{4}$  west 88 poles to the corner of  
sec. 8, 9, 14 & 15 a stone in a field (the original bearing tree are  
gone) thence  $N 81 \frac{1}{4} E$  with the line between 8 & 9 160 poles  
to a ~~stone~~ in a prairie, continued 160 poles further to  
the corner between sec. 2, 3, 8 & 9, a hickory 14 inches in diam.  $S 75 E$   
44 links; thence  $S \frac{1}{4} W$  162 poles to a white oak  $N 21 E 22$  links  
original q. sec. corner continued 162 poles to the corner between  
1, 2, 7 & 8, the original bearing trees are down set a stake; thence  
 $S 89 \frac{1}{4} W$  160 poles a white oak  $30 E$  8 links, an elm  $S 70 E 20$  links -  
continued 100 poles further to the east bank of the river an  
elm  $N 15 W 15$  links  
an elm  $S 20 W 22$  links -

From the last  
named corner  
or  $\frac{3}{4} E$  162 poles a  
bur oak  $S 45 E 13$   
links, continued  
162 poles further to  
the stone in the  
north line of this sec  
From the center corner  
 $S 89 \frac{1}{4} E$  160 poles to the  
original q. sec. corner in the east line of the sec. -



J. M. Harmon  
J. M. Harmon

James Moore, March, 3<sup>rd</sup> mo 23<sup>rd</sup> 1832 ✓ Survey No. 177

177

8265

Surveyed the No. q. of sec. 4 T. 2. R. 14. W. 1. for James

Moore Beginning at the south west corner of a q. sec.  $N 10 E$   
a red oak  $W 10 E$  14 links a white oak  $N 15 E 28$  links  
thence north 160 poles to a stake in a prairie; thence  
east 160 poles to a stake in the east line of the sec. in a  
prairie thence south 160 poles to the south east corner