

Eoad No. 23 Miami, Pleasant, & Bloomfield Twp

25+00 P.O.T. Set RR Spike, 3' from edge.

FB 708

21+26.55 Fd. stone w. brick 1.5' deep, set hub on stone.
No Angle

20+00 P.O.T. RR Spike set.

15+00 P.O.T. Set RR Spike, 1' from West edge.

10+00 P.O.T. hhd. hub, off West edge pavement.

8+49.48 P.O.T. Set hhd. hub, on West edge pavement
military crest of ridge.

5+00 P.O.T. Set hhd. hub, on West edge pavement.

0+00 Fd. stone 1' deep, See F.B. 589, pg. 59
set hub on stone.

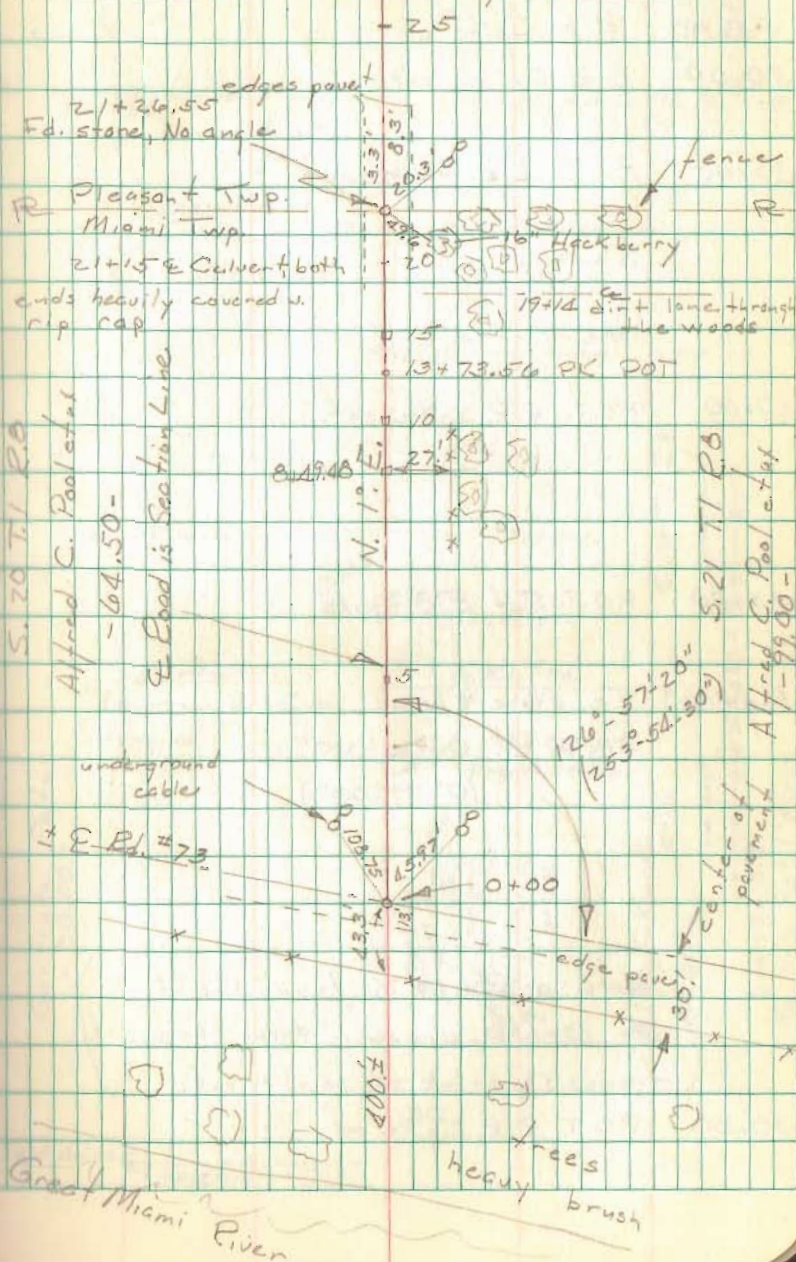
6672

INDEXED ON MAP

Nichols
Brooks Prall
Henry X

18 August 1970
85° Sunny
Gurley

10



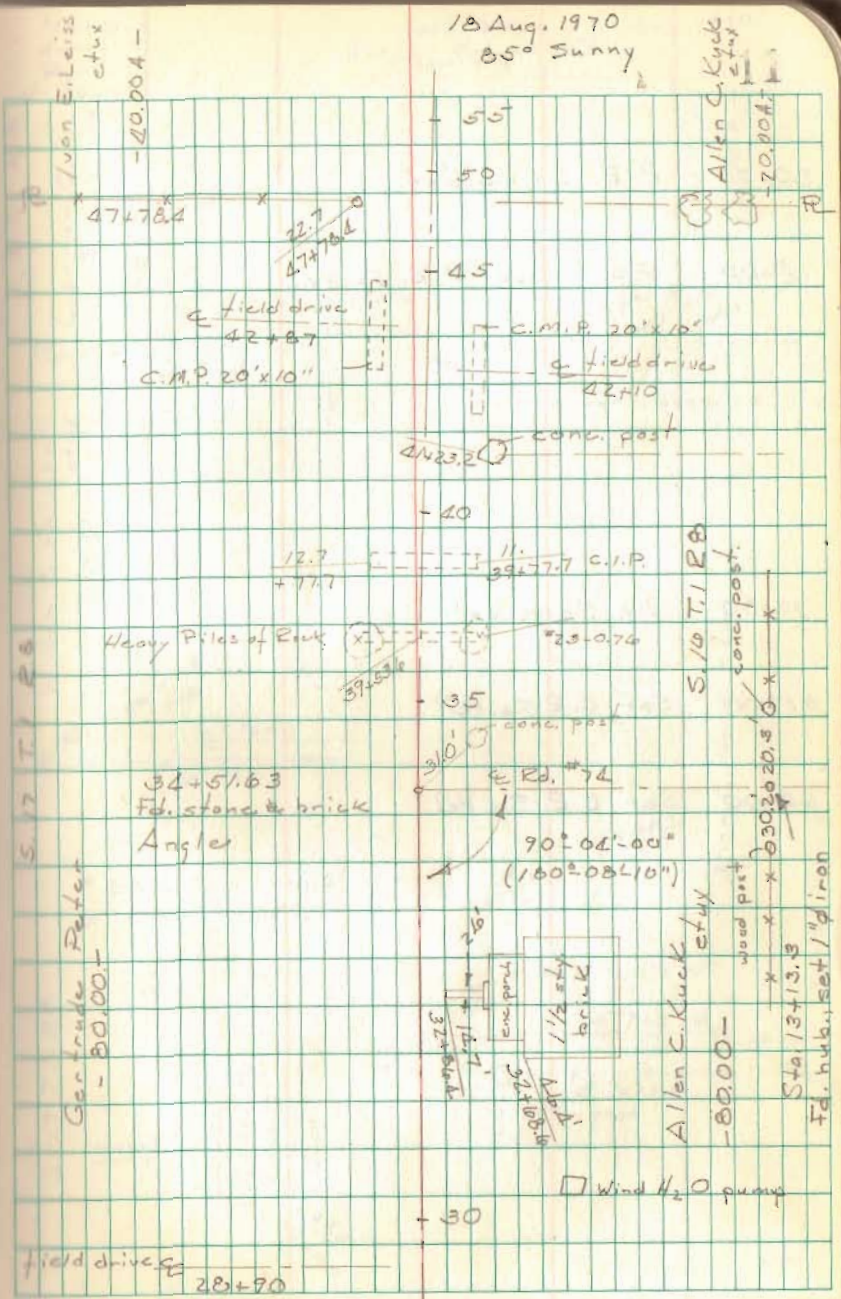
FB 708

Ed. No. 218 Pleasant Twp. cont.

- 55+00 R.R. Spike set
- 50+00 R.R. Spike set
- 45+00 P.O.T. R.R. Spike set
- 40+00 P.O.T. R.R. Spike set.
- 35+00 P.O.T. Set R.R. Spike
- 34+51.63 Fd. stone & brick
Angle Pt. $0^{\circ}04'30''$
($0^{\circ}09'00''$)
- 30+00 P.O.T. R.R. Spike set

(Note: on Rd. No. 74 found hub of sta. 13+13.3, drove 1" pipe through it, traces of brick at point of hub.)

18 Aug. 1970
85° Sunny



Allen C. Kuck
study
- 20.004 -

S. 10 T. 1 R. 8
conc. post.

Gertrude Peter
- 80.00 -

Allen C. Kuck
study
- 80.00 -

Sta. 13+13.3
Fd. hub, set 1" pipe

Wind H₂O pump

field drive
28+90

FB 708

Ed. No. 23 cont.

80+00 R.R. Spike set.

75+00 P.O.T. set R.R. Spike

70+00 R.R. Spike set.

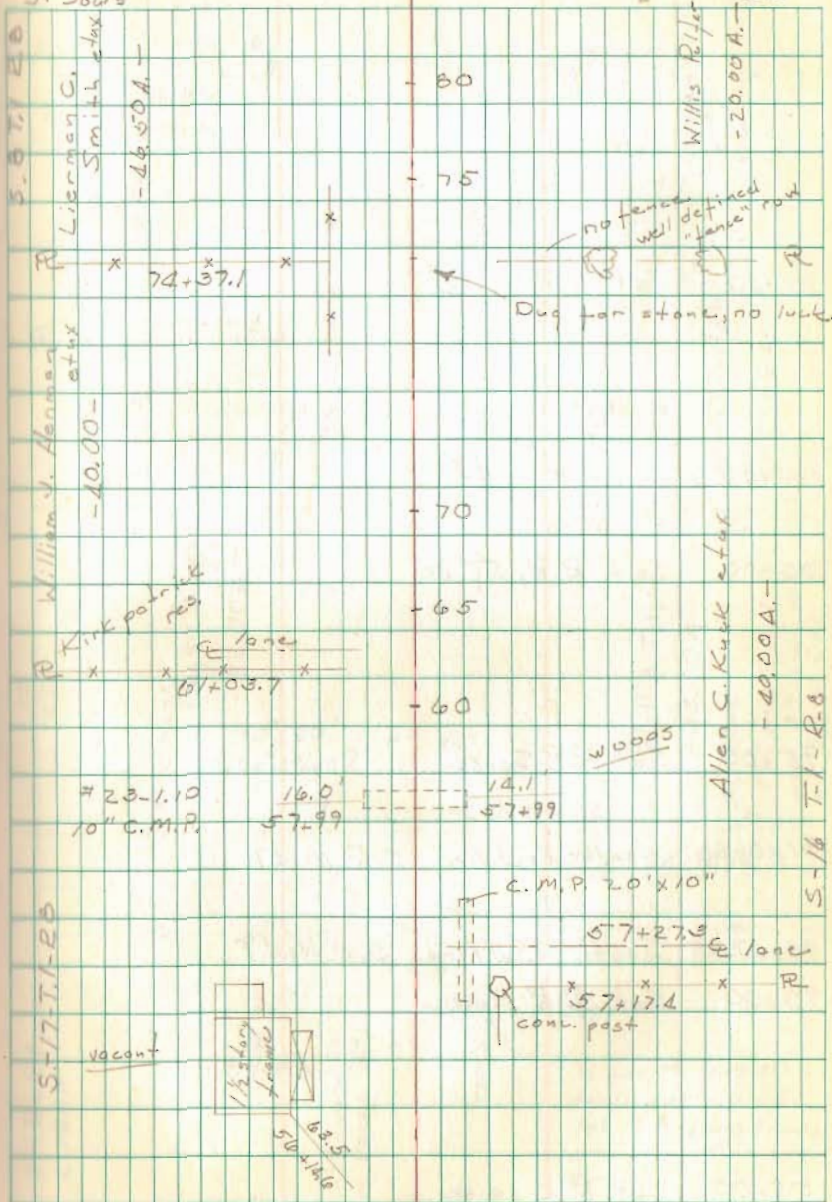
65+00 Set R.R. Spike

60+00 Set R.R. Spike

Nichols
Henry X
Droll
J. Sours

Sta. 6500 - 19 Aug. 1970
Gurley

12



Rd. No. 23 cont.

FB 708

110+00 Set R.R. Spike

105+00 Set R.R. Spike

100+00 Set R.R. Spike

95+00 Set R.R. Spike

91+06.98 North R/W line S.R. No. 47

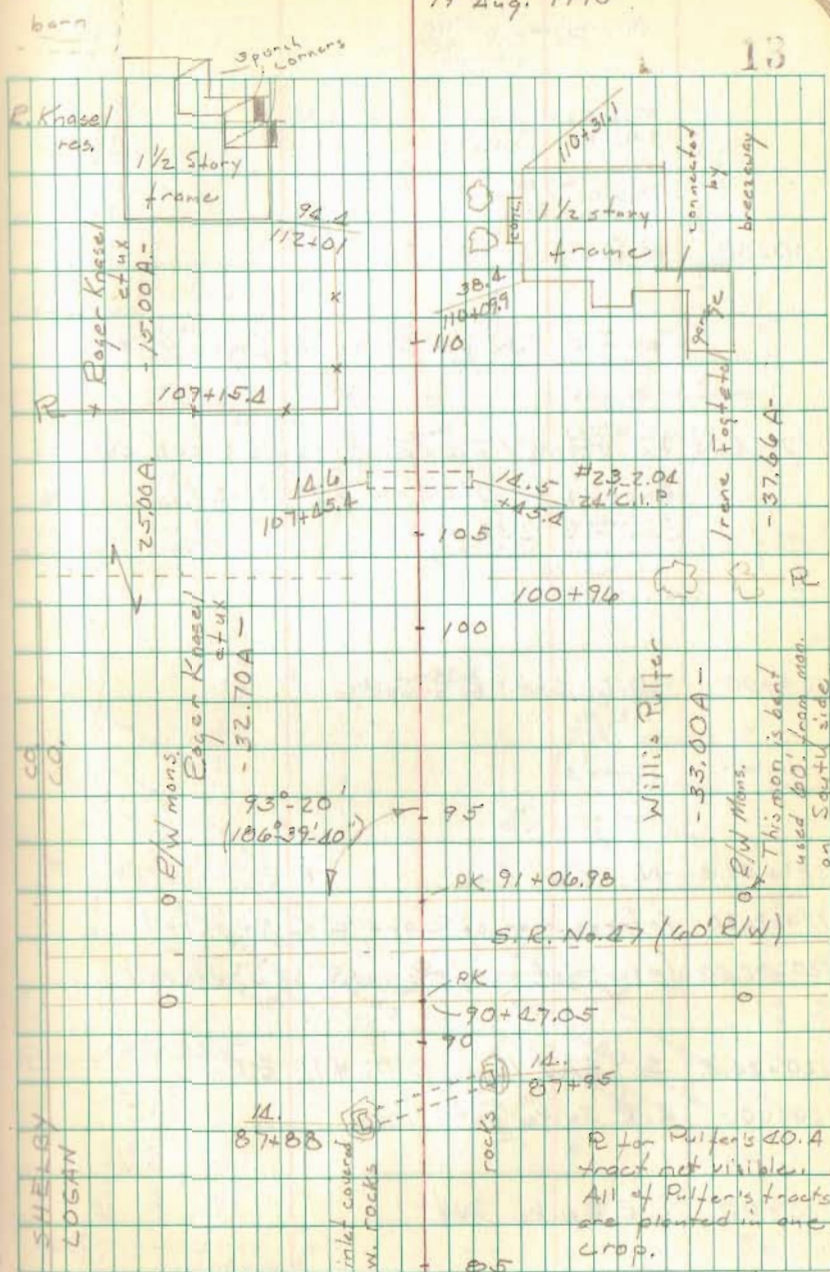
90+47.05 South R/W line S.R. No. 47

90+00 Set R.R. Spike

85+00 Set R.R. Spike

19 Aug. 1970

13



R for Puffer's 40.4 tract not visible. All of Puffer's tracts are planted in one crop.

FB 708

Rd. #23 cont.

130+00 R.R. Spike set

(See F.B. 552 for Ed. No. 76, pages 65 & 66)

127+44.04 Fd. stone 1.2' deep, stone is green colored
 Angle Lt. $0^{\circ}04'10''/0^{\circ}08'20''$
 See F.B. 552 pg. 65

125+00 P.O.T. Set R.R. Spike

121+51.4 N. R/W line R.R.

120+91.80 Intersection of E and E of North rail

120+82.50 Intersection of E and E of South rail

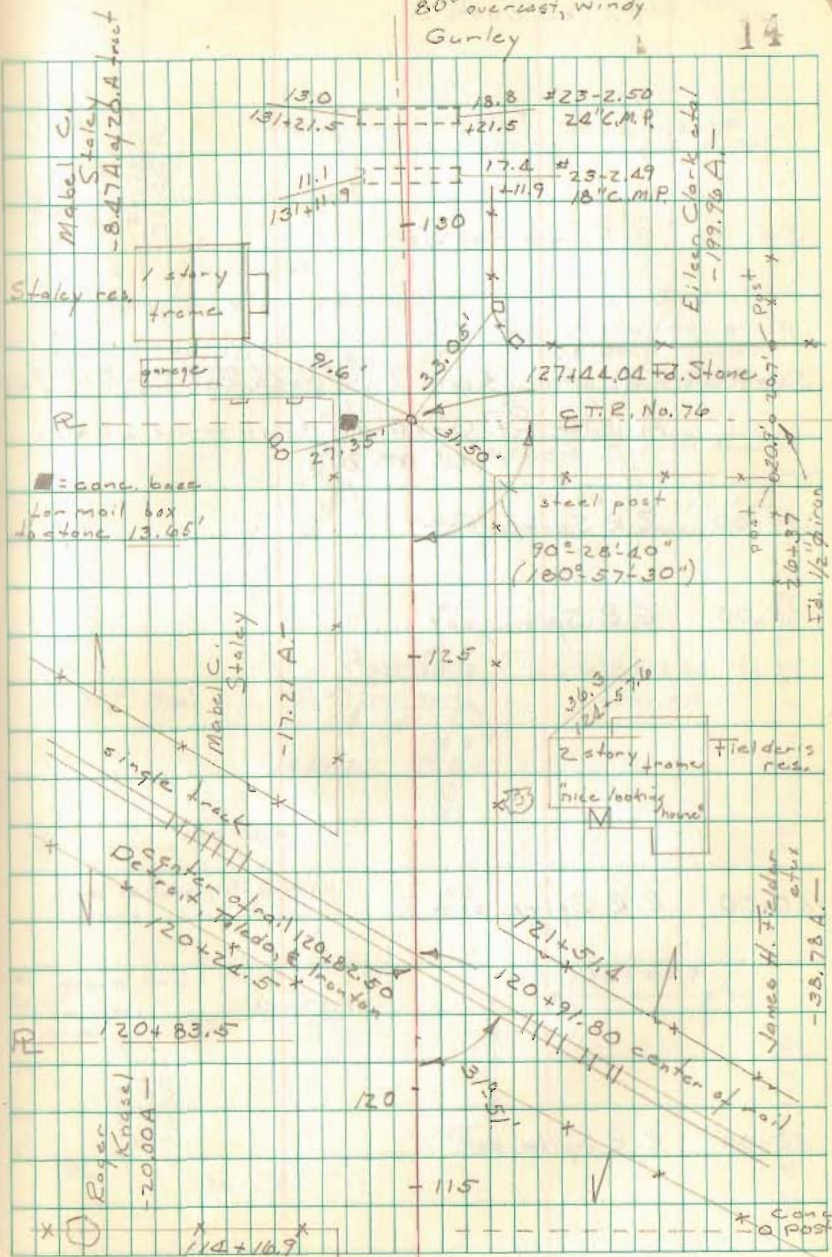
120+24.5 S. R/W line D.T. #1. R.R.

120+00 R.R. Spike set

115+00 R.R. Spike set

19 Aug. 1970
 80° overcast, windy
 Gunley

14



Ed. 23 cont.

FB 708

155+00 R.R. Spike set.

153+97.06 Fd. stone & brick, 3' deep See F.B. 575, pg 62
Angle Pt. $0^{\circ}00'40''$ (angle turned 20 E R)
($0^{\circ}01'20''$)

150+00 R.R. Spike set

145+00 R.R. Spike set

140+00 R.R. Spike set

135+00 R.R. Spike set

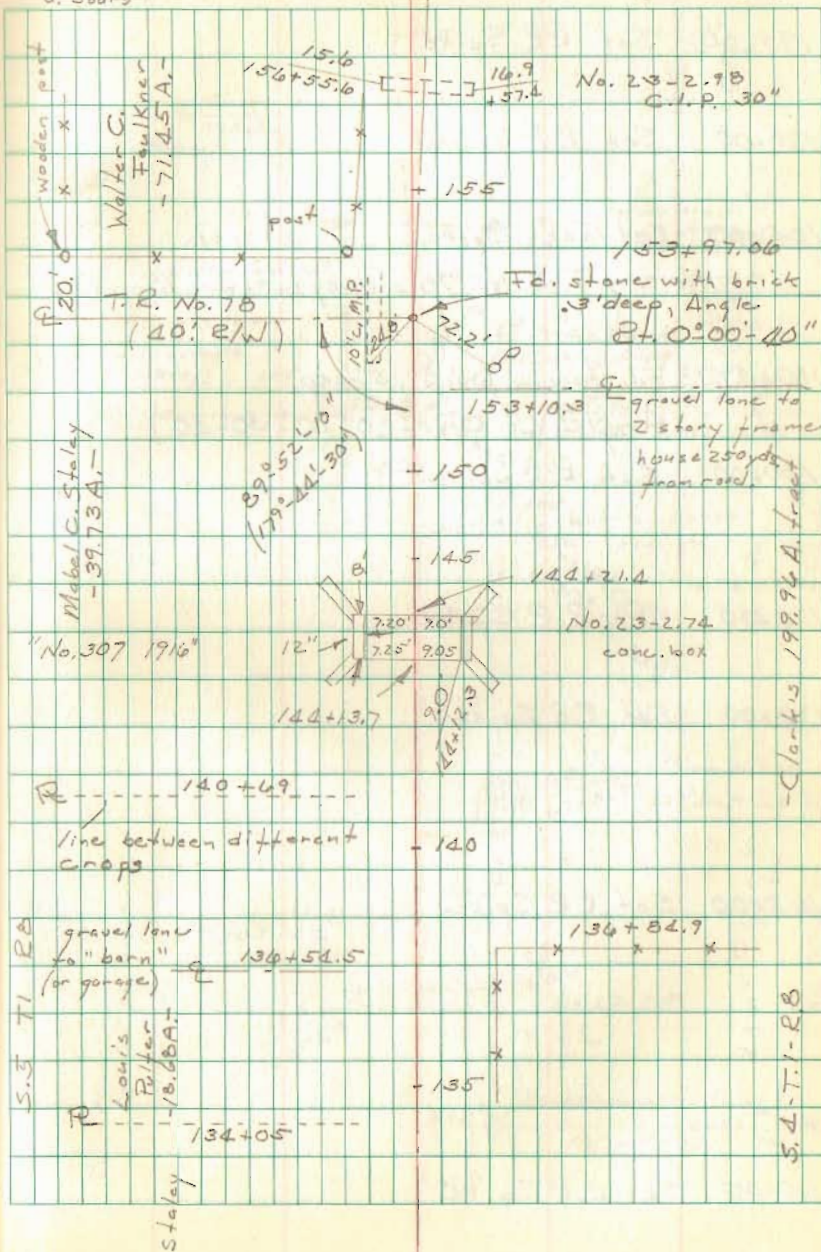
Nichols
S. Henry F
D. Prall
V. Jours

20 Aug. 1970

80°

rain @ 10:15.

15



FB 708

Rd. No. 23 Pleasant Twp.

195+00 Set RR Spike

190+00 Set RR Spike

185+00 Set R.R. Spike

Note: (T. R. No. 70 survey in F.B. 575 pg. 72)

180+49.73 Fd. stone w. brick .5' deep.

Angle Lt. $0^{\circ}15'20''$ ($0^{\circ}30'40''$)

180+00 Set R.R. Spike

175+00 Set R.R. Spike

170+00 Set R.R. Spike

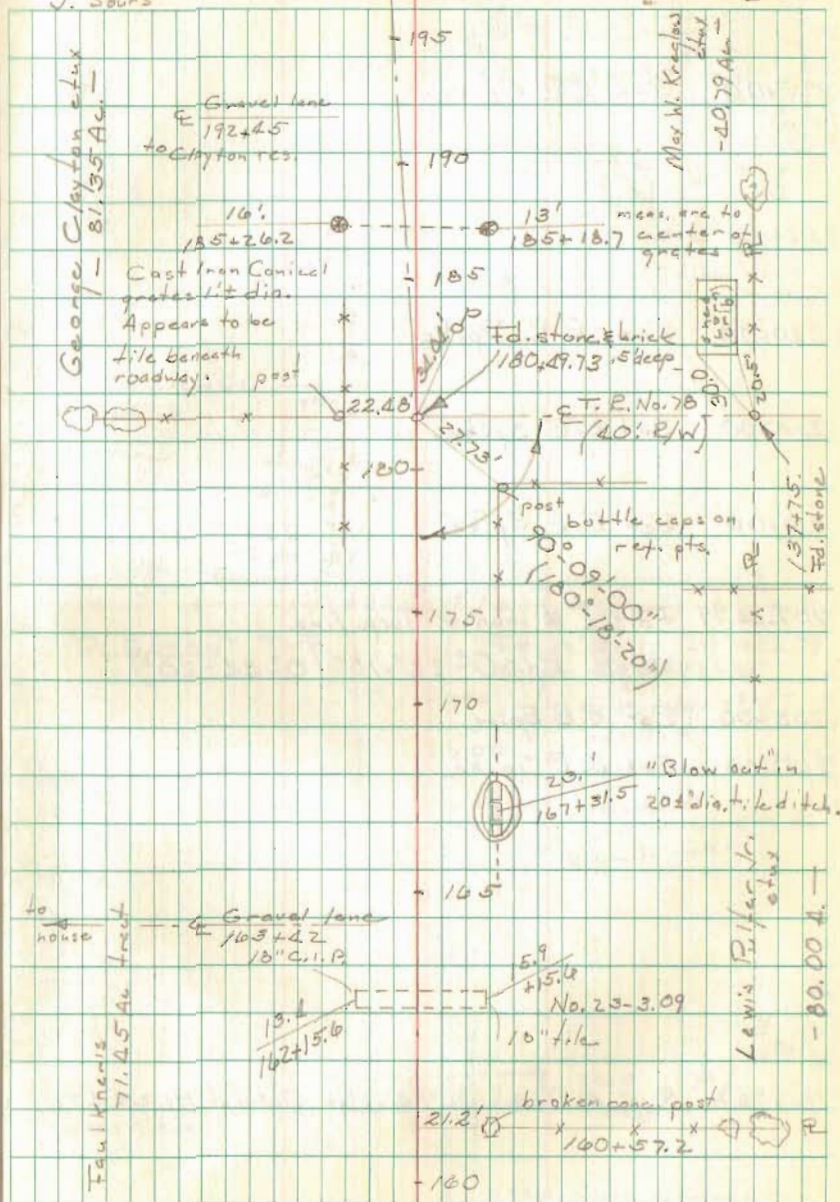
165+00 Set R.R. Spike

160+00 Set R.R. Spike

Nichols
S. Henry T
D. Prall
V. Sours

20 Aug 1970, 180+49.73 on 21 Aug.
pm 80° overcast

16



Rd. No. 23 cont. Pleasant & Bloomfield

FB 708

225+00 Set R.R. Spike

220+00 Set R.R. Spike

215+00 Set R.R. Spike

210+00 Set R.R. Spike

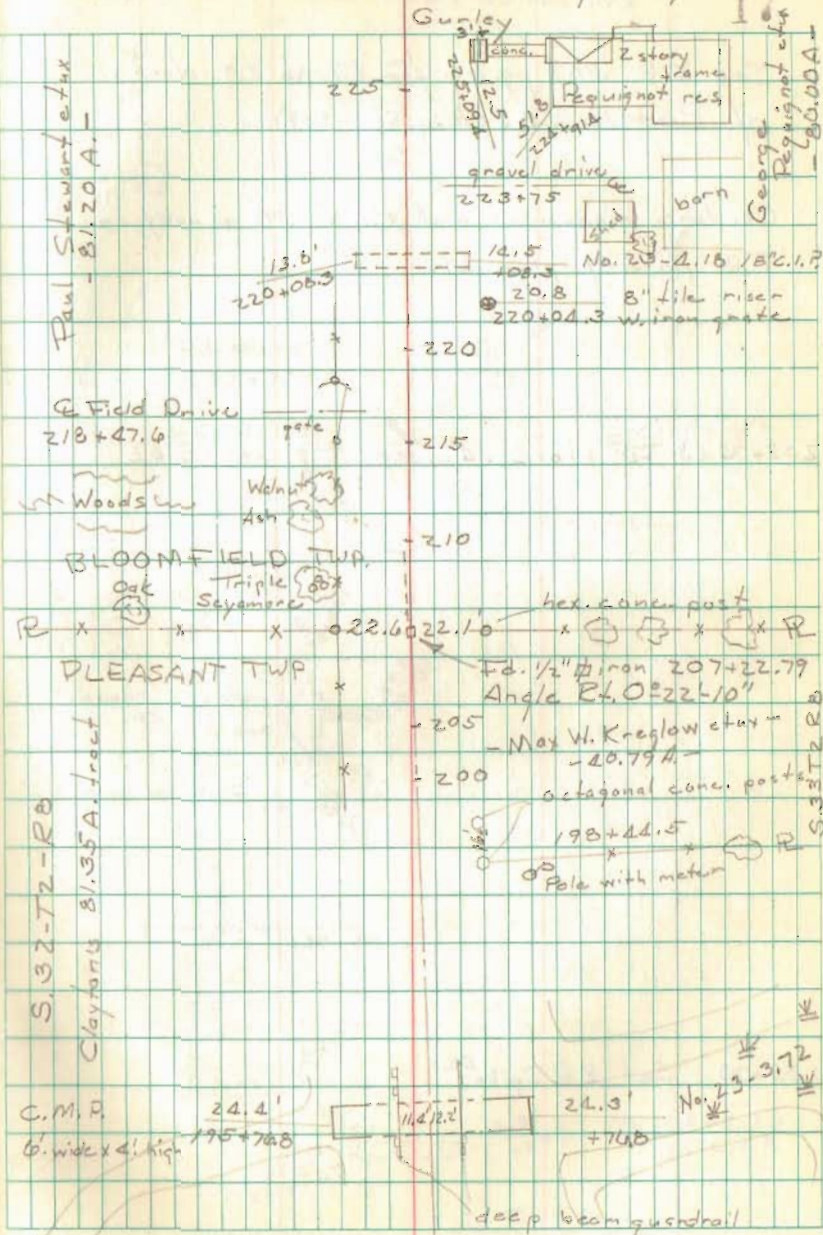
207+22.79 Fd. 1/2" # iron. Twp. line
Angle R.L. $0^{\circ}22'-10''$ ($0^{\circ}44'-20''$)

205+00 Set R.R. Spike

200+00 Set R.R. Spike

195+76.8 E.C.M.P. 6' wide x 4' high, Culvert No. 23-3.72

21 Aug. 1970
at 75° Sunny, windy



FB 708

Rd. No. 23 cont. Bloomfield Twp.

See F.B. 589 pg. 42 for Rd. No. 23 North
of Road No. 58. (August 1939)

Co. line monument and Rd. No. 58 survey in
F.B. No. 601 page 29.

233+74.43 Fd. stone .4' deep. F.B. 589 pg. 42

230+00 Set RR Spite

21 Aug. 1970
pm 7:50 Sunny, windy
Gurley

18

